

The background of the entire page is a microscopic image showing various cells and structures. There are large, rounded cells with granular interiors, some in shades of orange and red, and others in shades of blue and purple. The overall color palette is dark, with deep blues and purples, punctuated by the warmer colors of the cells. The text and logo are overlaid on a semi-transparent dark blue diagonal band that runs from the top-left towards the bottom-right.

virax  **biolabs**

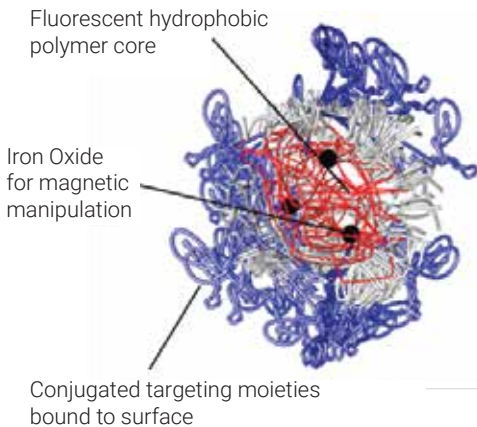
Flow Cytometry Antibodies

Customisable Antibody Options
Visible & Near Infrared Spectrum
Fluorescent Nanoparticles

flow cytometry antibodies

At Virax Biolabs, we offer antibodies conjugated to unique & novel fluorescent nanoparticles specifically for Flow Cytometry, covering the visible and near infra-red spectrum (420nm-1000nm).

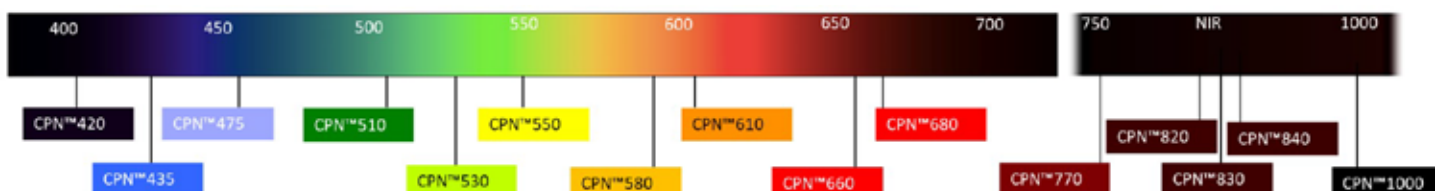
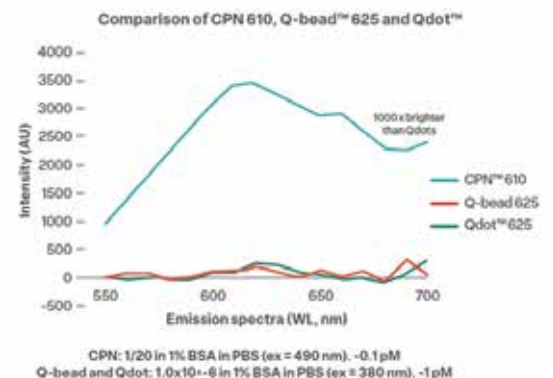
These particles, called FlowCPNs™, demonstrate exceptional and superior properties compared to conventional fluorophores, with extraordinary photo-, thermo- and chemical stability. Their intense fluorescent signals allow even low expressing proteins to be imaged.



flowCPNs

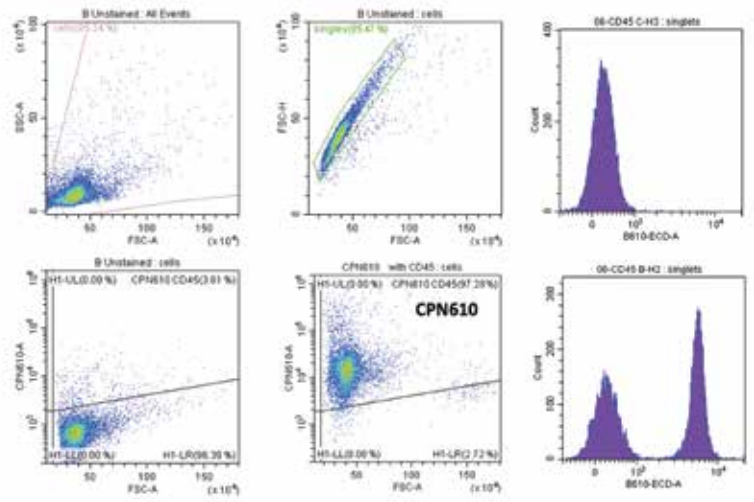
CPNs™ are powerfully bright fluorophores with many advantages over conventional dyes and probes. FlowCPNs™ provide immense brightness and contrast, have extraordinary photo-, thermo- and chemical stability, and are available in a wide range of wavelengths on the visible and IR spectrum.

CPNs™ have an intense fluorescence that reaches into the near IR (420-1000 nm). They are 1000 times brighter than quantum dots. The key to the robustness, brightness and, in turn, sensitivity is their double-back-boned conjugated polymer core structure, which has an exceptionally high extinction coefficient (absorption of photons).



primary cell staining

CPN™ antibodies can target specific cell proteins with immense brightness and contrast. In this example anti-CD45-CPN™ 610 is used to label surface CD45 on mouse spleen cells. The population of CD45 positive cells is clearly differentiated by CPN™ 610+CD45.



flow cytometry catalogue

We provide a mix-and-match antibody service: any marker in our catalogue can be conjugated to the FlowCPN™ of your choice, to give you fully customizable panels for all your research needs.

Lineage Markers	
CD3	CD45RO
CD4	CD62L
CD8	CD95
CD27	CD127
CD28	TCRb
CD45	IgG
CD45RA	IgM

Exhaustion / Senescence Markers	
BTLA	CTLA-4
CD39	KLRG1
CD57	LAG-3 (CD223)
CD73	PD-1
CD96	TIGIT
CD160	Tim-3 (CD366)
CD244 (2B4)	VISTA

Activation Markers	
CD25	CD154 (CD40L)
CD38	Granzyme B
CD44	HLA-DR
CD69	Ki67
CD137 (4-1BB)	Perforin

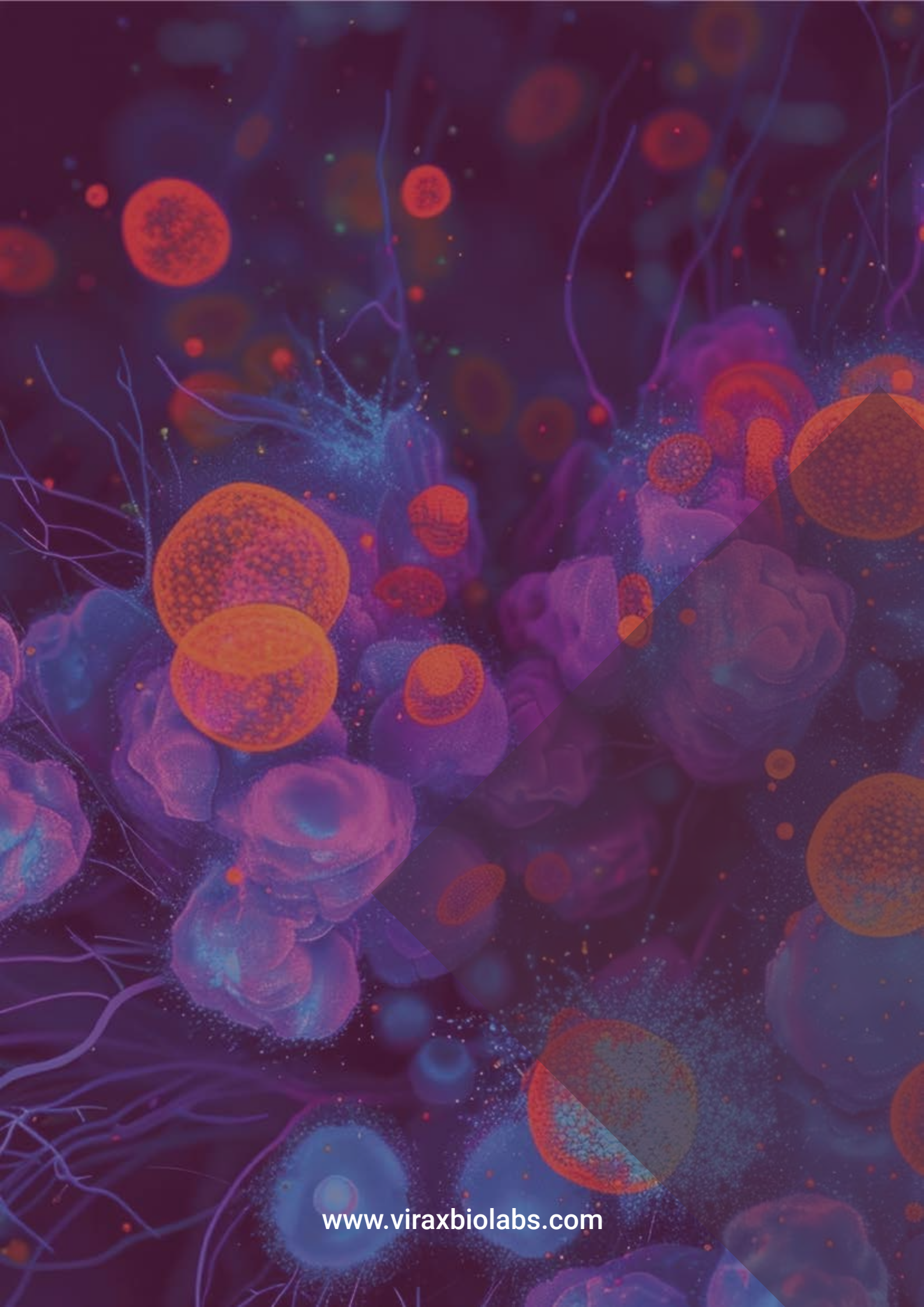
Cytokines & Receptors	
CCR7	IL-5
GM-CSF	IL-6
IFN-γ	IL-8
IL-1B	IL-10
IL-2	IL-13
IL-2Rbeta	IL-17A
IL-4	TNF-α

Reactivity: all antibodies listed are anti-human.

CPN	ex/em
CPN 420 (violet)	390/420
CPN 435 (indigo)	390/435
CPN 475 (blue)	390/475
CPN 510A (green)	455/510
CPN 510B (green)	400/510
CPN 530 (green)	455/530
CPN 550 (yellow)	470/550
CPN 580 (orange)	488/580
CPN 610 (orange)	480/610
CPN 660 (red)	540/660
CPN 680 (red)	400/680
CPN 770 (IR-I)	610/770
CPN 820 (IR-I)	640/820
CPN 830 (IR-I)	610/830
CPN 840 (IR-I)	630/840
CPN 1000 (IR-II)	750/1000

We put you in control with flexible, customizable antibody options that allow you to steer your project in the direction you need, and our experienced specialists will work closely with you to create a personalized plan, ensuring your project's success.

Contact us to find out how we can help you find the antibody solution that's right for you.



www.viraxbiolabs.com