



# Immunology Antibodies

Highly-specific, sensitive  
immunology antibodies from a  
leading US manufacturer

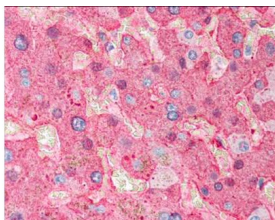
## Introduction

Enhance immune system and infectious disease research with Rockland's extensive collection of primary antibodies that cover key areas of immunology, including cell surface markers, cytokine antibodies (including interferon gamma antibodies), T cell receptors, MHC molecules, and their protein partners.

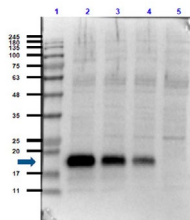
We produce antibodies to specific diseases like Lyme disease, SARS, and influenza, including several monoclonal antibodies to H5N1 (also known as A (H5N1), a subtype of Influenza A. Our selection of antibodies also includes a diverse set of specific antibodies to modified proteins, such as phospho-specific and methylation-specific antibodies, Rockland also caters to the complement system, immunotherapy, autoimmune diseases, immuno-oncology.

Product	Reactivity	Application	Item No.
Alpha-1-Acid Glycoprotein Antibody	Human	WB	<a href="#">200-401-046</a>
Beta-2-Microglobulin Antibody	Human	WB, IHC, IF	<a href="#">200-401-141</a>
CRP Antibody Fluorescein Conjugated	Human	Dot Blot	<a href="#">209-1232</a>
Dextranase Antibody Peroxidase Conjugated	Penicillium	WB, ELISA	<a href="#">200-403-089</a>
Ffar4 Antibody	Mouse, Rat	WB, ELISA	<a href="#">600-401-GWO</a>

Product	Reactivity	Application	Item No.
Fibrinogen Antibody Biotin Conjugated	Human	WB, IHC, ELISA	<a href="#">200-106-240</a>
Fibrinogen Antibody Peroxidase Conjugated	Human	WB, IHC, Dot Blot, ELISA	<a href="#">200-103-240</a>
Fractalkine Antibody	Human	WB	<a href="#">209-401-H49</a>
Fractalkine Antibody Biotin Conjugated	Human	WB	<a href="#">209-406-H49</a>
Glycerol Kinase Antibody	Glycerol Kinase (Cellulomonas)	WB, ELISA	<a href="#">200-101-211</a>
IL-1 Beta Antibody Biotin Conjugated	Mouse	WB, Dot Blot	<a href="#">210-406-319</a>
IL-17F Antibody	Mouse	WB, Dot Blot	<a href="#">210-401-B31</a>
IL-1F5 Antibody	Bovine	WB, ELISA	<a href="#">201-401-B77</a>



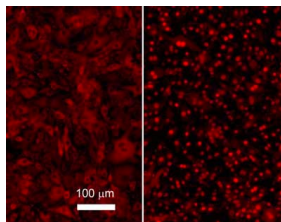
**Fig 1.** Immunohistochemistry of Fibrinogen Antibody Peroxidase Conjugated in human liver tissue.



**Fig 2.** Western blot of IL-6 Antibody in HeLa whole cell lysate.

Product	Reactivity	Application	Item No.
IL-2 Antibody	Human	WB	<a href="#">209-401-B95</a>
IL-35 EBI3 Antibody	Mouse	WB, ELISA, IP	<a href="#">210-301-C55</a>
IL-35 EBI3 Antibody Peroxidase Conjugated	Mouse, Rat	WB	<a href="#">210-403-B66</a>
IL-35 EBI3 Biotin Conjugated Antibody	Mouse	ELISA	<a href="#">210-306-B66</a>
IL-4 Antibody	Human	WB	<a href="#">209-401-B93</a>
IL-6 Antibody	Human	WB, Dot Blot, SDS-PAGE	<a href="#">109-401-310</a>
IL-6 Antibody Peroxidase Conjugated	Human	WB	<a href="#">209-403-310</a>
IL-7 Antibody Peroxidase Conjugated	Human	WB, Dot Blot	<a href="#">209-403-B94</a>
IL-7 Receptor Alpha Chain Phospho Y449 Antibody	Human, Mouse, Rat	WB, ELISA	<a href="#">600-401-A49</a>
IRS1 Phospho S307 Antibody	Human	WB, ELISA	<a href="#">600-401-445</a>
MIP-3 Alpha Biotin Conjugated Antibody	Human	WB	<a href="#">209-306-B51</a>
Mutarotase Antibody Biotin Conjugated	Pig	WB, ELISA	<a href="#">200-4662</a>
Mutarotase Antibody Peroxidase Conjugated	Pig	WB, ELISA	<a href="#">200-4362</a>
NFkB p65 Antibody	Human	WB, IHC, IF	<a href="#">200-301-065</a>
NFkB p65 phospho S536 Antibody	Human	WB, IHC, ELISA	<a href="#">600-401-265</a>
Papain Antibody Biotin Conjugated	Papaya	WB, ELISA	<a href="#">200-1674</a>

**Fig 3.** Immunofluorescence of NFkB p65 Antibody in mouse endothelial cells.



Product	Reactivity	Application	Item No.
Papain Antibody Peroxidase Conjugated	Papaya	WB, Dot Blot, ELISA	<a href="#">200-1374</a>
Plasminogen Antibody Biotin Conjugated	Human	WB, ELISA	<a href="#">200-106-208</a>
Procalcitonin (11D9.F3.C12.B8) Antibody	Human	WB, ELISA	<a href="#">200-301-144</a>
Procalcitonin (15F6.F6.F9) Antibody	Human	WB, ELISA	<a href="#">200-301-139</a>
Procalcitonin (17H9.B4.H2) Antibody	Human	WB, ELISA	<a href="#">200-301-141</a>
Procalcitonin (18C4.B4.C2) Antibody	Human	WB, ELISA	<a href="#">200-301-140</a>
Procalcitonin (22C1.C7.C6.B8.B7.G8) Antibody	Human	WB, ELISA	<a href="#">200-301-150</a>
Procalcitonin (4D12.D4.F3.E2.H7.E7) Antibody	Human	WB, ELISA	<a href="#">200-301-148</a>
Procalcitonin (4F2.D9.C5.G5.B2.C5) Antibody	Human	WB, ELISA	<a href="#">200-301-149</a>

Product	Reactivity	Application	Item No.
Procalcitonin (6C12.A12.H4.A3.F9) Antibody	Human	WB, ELISA	<a href="#">200-301-I43</a>
Procalcitonin (8B5.A3.D5.D3.G6.E7) Antibody	Human	WB, ELISA	<a href="#">200-301-I45</a>
Procalcitonin (8G10.H3.C3.G4.E2.C8) Antibody	Human	WB, ELISA	<a href="#">200-301-I46</a>
Procalcitonin (9D9.E11.C3.E8.F4.D4) Antibody	Human	WB, ELISA	<a href="#">200-301-I47</a>
Procalcitonin (9G4.C3.F2) Antibody	Human	WB, ELISA	<a href="#">200-301-I42</a>
Protein A Antibody	Protein A	WB, Dot Blot	<a href="#">200-901-077</a>
Protein G Antibody Fluorescein Conjugated	Human, Rat	Dot Blot	<a href="#">200-402-138</a>
Recombinant DIG (DIG44) Antibody	Digitalis sp.	WB, ELISA, SDS-PAGE	<a href="#">400-001-MG3</a>
RFX5 Antibody	Human	WB	<a href="#">100-401-193</a>
Selenoprotein W Antibody	Mouse	WB, ELISA	<a href="#">600-401-A29</a>
Smac/Diablo Antibody	Human	WB	<a href="#">100-401-244</a>
STAT1 R31-Me2a Antibody	Human	Dot Blot	<a href="#">600-401-GH1</a>
Stat2 Antibody	Human	WB, IHC, ELISA	<a href="#">200-301-B65</a>
TBK1 Antibody	Human, Mouse	WB, IF, ELISA	<a href="#">600-401-MK6</a>
Tetanus Toxic Fragment C Antibody	Clostridium tetani	WB, ELISA	<a href="#">100-401-894</a>
TEV Protease Antibody	TEV	WB, ELISA	<a href="#">200-401-B91</a>
TLR4 Antibody	Human	WB, IHC, ELISA	<a href="#">600-401-MK3</a>

Product	Reactivity	Application	Item No.
TNF Alpha Antibody	Human, Primate	WB, IHC, IF	<a href="#">109-401-306</a>
TNF Alpha Antibody	Human	WB, IHC, IF	<a href="#">209-401-306</a>
Transferrin Antibody	Human	WB, IHC, ELISA	<a href="#">209-4134</a>
Transferrin Antibody Biotin Conjugated	Human	WB, ELISA	<a href="#">209-4634</a>
Transferrin Antibody Fluorescein Conjugated	Human	WB, Dot Blot	<a href="#">209-4234</a>
ZBP-89 Antibody	Human	WB, ELISA	100-401-685

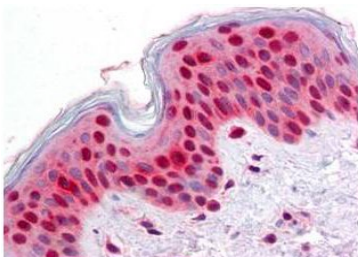
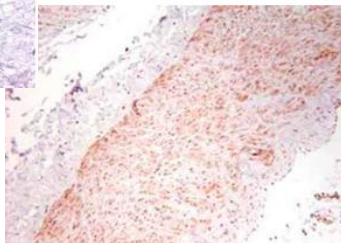


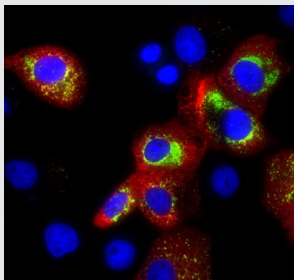
Fig 5. Immunohistochemistry of TNF alpha Antibody in human artery tissue.

Fig 4. Immunohistochemistry of TNF alpha Antibody in human artery tissue.

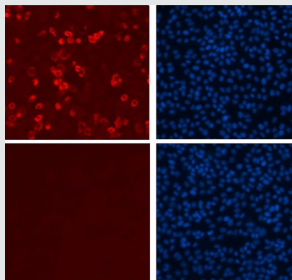


## COVID-19 Antibodies

Our antibodies specific to SARS-CoV-2 Nucleocapsid and Spike proteins are being used both directly and indirectly for vaccine development, drug discovery, diagnostics, and COVID-19 research by our global network of collaborators. Since the discovery of SARS-CoV-2, Rockland has been producing antibodies targeting various viral proteins, including the Membrane protein, 3CL Protease, and Non-Structural Protein 3 (NSP3) and 8 (NSP8).



**Figure 6.** Our SARS-CoV Nucleocapsid (N) Protein Antibody detecting viral protein synthesis post SARS-CoV-2 infection in Vero E6 cells.



**Figure 7.** Our SARS-CoV-2 Spike Protein (RBD) antibody showing viral protein detection in Vero E6 cells (top left).

<b>Nucleocapsid Protein</b>	<b>Reactivity</b>	<b>Application</b>	<b>Item No.</b>
SARS Nucleocapsid Protein Antibody	SARS-CoV	IF, ELISA	<a href="#"><u>600-401-A50</u></a>
SARS Nucleocapsid Protein Antibody Biotin Conjugated	SARS-CoV	ELISA	<a href="#"><u>600-406-A50</u></a>
SARS-CoV-2 Nucleocapsid (N) Protein Antibody	SARS-CoV-2	ELISA	<a href="#"><u>600-401-MS4</u></a>
<b>Spike Protein</b>	<b>Reactivity</b>	<b>Application</b>	<b>Item No.</b>
SARS-CoV-2 Whole Spike Protein Antibody	SARS-CoV-2	ELISA	<a href="#"><u>600-401-MS9</u></a>
SARS-CoV-2 Whole Spike Protein Antibody Biotin Conjugated	SARS-CoV-2	ELISA	<a href="#"><u>600-406-MS9</u></a>
SARS-CoV-2 Spike Protein Antibody	SARS-CoV-2	ELISA	<a href="#"><u>600-406-MS8</u></a>
<b>Other Proteins</b>	<b>Reactivity</b>	<b>Application</b>	<b>Item No.</b>
Sars-CoV Nonstructural Protein 8 Antibody	SARS-CoV	WB, IF	<a href="#"><u>100-401-A53</u></a>
Sars-CoV Nonstructural Protein 13 Antibody	SARS-CoV	IF	<a href="#"><u>100-401-A54</u></a>
SARS 3CI Protease Antibody	Virus	WB	<a href="#"><u>200-401-A51</u></a>



+1 484.791.3823

P.O. Box 5199

Limerick, PA 19468, USA

[sales@rockland.com](mailto:sales@rockland.com)

[rockland.com](http://rockland.com)

