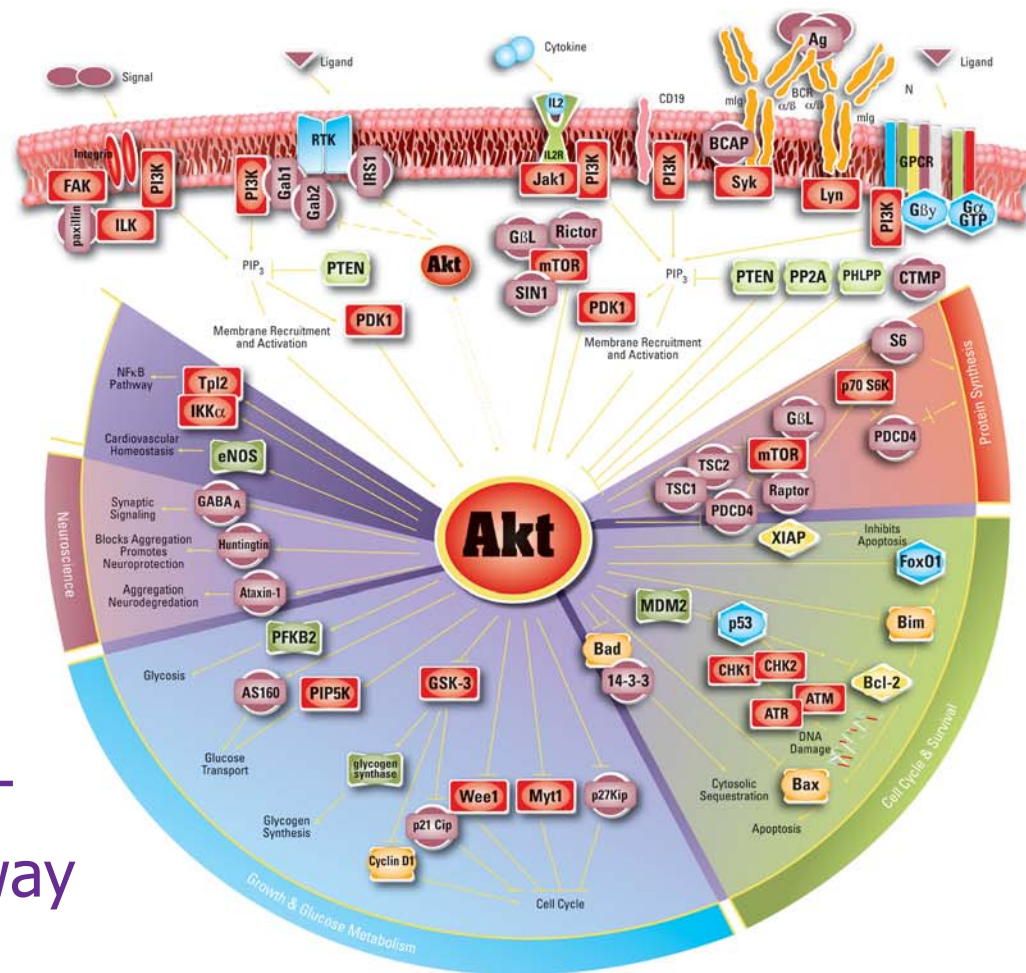


Cancer | **Neuroscience** | **Epigenetics**



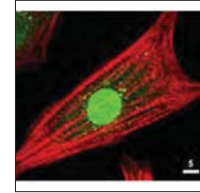
AKT
Pathway

Cancer Antibodies

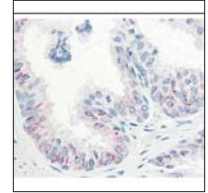
PRODUCT NAME	CATALOG#	APPLICATIONS	SIZE
Anti-ABCB1 (Rabbit)	600-401-967	IHC, WB, E	100 µg
Anti-AKT pan (Mouse Mab)	200-301-401	WB, IP, E	100 µg
Anti-AKT pan (Rabbit)	100-401-401	IHC, IF, WB, IP, E	200 µl
Anti-AKT pan (Sheep)	600-601-401	WB, IP, E	100 µg
Anti-AKT Phospho pS473 (Mouse Mab)	200-301-268	IHC, IF, WB, IP, E	100 µg
Anti-AKT Phospho pS473 (Rabbit)	600-401-268	IHC, IF, WB, IP, E	100 µg

Cancer Antibodies

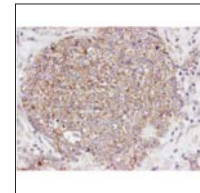
PRODUCT NAME	CATALOG#	APPLICATIONS	SIZE
Anti-AKT Phospho pT308 Monoclonal Antibody	200-301-269	IHC, WB, IP, E	100 µg
Anti-AKT Phospho pT308 (Rabbit)	600-401-269	IHC, WB, IP, E	100 µg
Anti-AKT S473 Phospho Monoclonal Antibody	200-301-268	IF, IHC, IP, WB, E	100 µg
Anti-AKT T308 Phospho Monoclonal Antibody	200-301-269	IF, IHC, IP, WB, E	100 µg
Anti-AKT1 isoform specific Monoclonal Antibody	200-301-151	IHC, WB, E	100 µg
Anti-AKT2 (Rabbit)	600-401-425	WB, IP, E	100 µg
Anti-AKT2 isoform specific Monoclonal Antibody	200-501-E71	IHC, WB, E	100 µg
Anti-AKT3 isoform specific Monoclonal Antibody	200-301-E75	IHC, WB, E	100 µg
Anti-Angiopoietin 1 (Rabbit)	100-401-403	IHC, WB, E	200 µL
Anti-Angiopoietin 2 (Rabbit)	100-401-402	WB, E	200 µL
Anti-ATG13 (Rabbit)	600-401-C50	WB, E	100 µg
Anti-ATG13 Phospho S318 (Rabbit)	600-401-C49	WB, E	100 µg
Anti-ATM Phospho Monoclonal Antibody S1981	200-301-400	IHC, IF, WB, IP, E	100 µg
Anti-ATM Protein Kinase S1981 (Rabbit)	600-401-398	IF, WB, IP, E	100 µg
Anti-Aurora B Phospho T232 (Rabbit)	600-401-677	IF, WB, E	100 µg
Anti-BrdU (Rabbit)	600-401-C29	IF, IHC, IP, WB, E	100 µg
Anti-BrdU Monoclonal Antibody	200-301-H50	WB, E	100 µg
Anti-c-MET Phospho pY1349/ pY1356 (Rabbit)	600-401-989	WB, E	100 µg
Anti-Cdk9 (Rabbit)	100-401-167	IHC, IP, WB, E	100 µL
Anti-Collagen Type I (Rabbit)	600-401-103-0.1	IHC, IP, WB, E	100 µg
Anti-Collagen Type II (Rabbit)	600-401-104-0.1	IHC, IP, WB, E	100 µg
Anti-Collagen Type III (Rabbit)	600-401-105-0.1	IHC, IP, WB, E	100 µg
Anti-Collagen Type IV (Rabbit)	600-401-106-0.1	IHC, IP, WB, E	100 µg
Anti-Collagen Type V (Rabbit)	600-401-107-0.1	IHC, IP, WB, E	100 µg
Anti-Cyclin D1 (Rabbit)	100-401-153	WB, IP, E	100 µl
Anti-DNA PKcs Phospho T2609 (Rabbit)	600-401-494	WB, E	100 µg
Anti-Fibronectin (Rabbit)	600-401-117-0.1	IHC, IP, WB, E	100 µg
Anti-Glycogen Synthase Phospho pS640 (Rabbit)	600-401-415	IHC, WB, E	100 µg
Anti-GSK3 alpha (Rabbit)	600-401-444	WB, IP, E	100 µg
Anti-GSK3 alpha Phospho pS21 (Rabbit)	600-401-429	WB, IP, E	100 µg
Anti-GSK3 beta pS9 (Rabbit)	600-401-424	IHC, WB, IP, E	100 µg
Anti-HER3 (Rabbit)	200-401-205	IP, WB, E	100 µg
Anti-HSP 90 K294 (Rabbit)	600-401-981	IHC, WB, E	100 µg
Anti-IIdU Monoclonal Antibody	200-301-H51	WB, E	100 µg
Anti-IKB alpha C-terminal (Rabbit)	100-4167C	WB, IP, E	100 µl
Anti-IKB beta (Rabbit)	100-4186	WB, IP, E	100 µl
Anti-IKK alpha (Rabbit)	100-401-219	WB, IP, E	100 µl
Anti-IKK beta (Rabbit)	100-401-220	WB, IP, E	100 µl
Anti-IKKe Phospho pT501 (Rabbit)	600-401-267	WB, IP, E	100 µg
Anti-IL-1 beta (Rabbit)	209-401-301	IHC, IP, WB, E	1 mg
Anti-IL-10 (Rabbit)	109-401-312	IHC, WB, E	1 mL
Anti-IL-6 (Rabbit)	109-401-310	IHC, IP, WB, E	1 mL



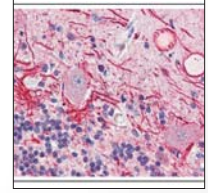
Rb anti-AKT



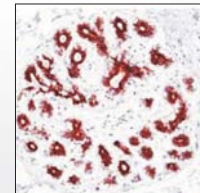
Ms anti-AKT pS473



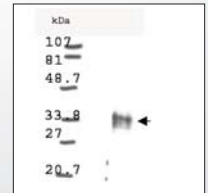
Rb anti-AKT pS473



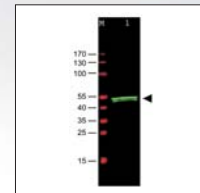
Ms anti-AKT pT308



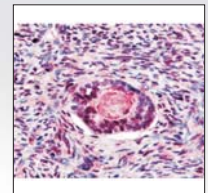
Rb Mab anti-BAX



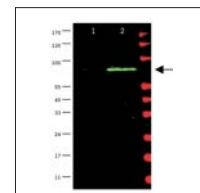
Rb anti-Cyclin D1



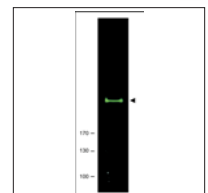
Rb anti-GSK3 alpha



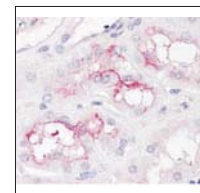
Rb anti-GSK3 beta pS9



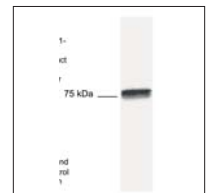
Rb anti-MDM2



Rb anti-mTOR

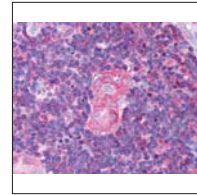


Rb anti-mTOR pS2448

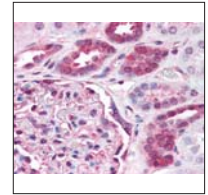


Rb anti-NFκB cRel

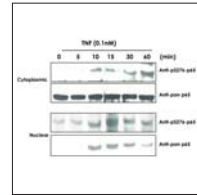
PRODUCT NAME	CATALOG#	APPLICATIONS	SIZE
Anti-IL-6 (Rabbit)	209-401-310	IHC, WB, E	100 µg
Anti-Lysozyme (Rabbit)	200-401-072	IHC, IP, WB, E	100 µg
Anti-Mcl-1 (Rabbit)	600-401-394	WB, E	100 µg
Anti-MDM2 (Rabbit)	600-401-927	WB, IP, E	100 µg
Anti-MDM2 Phospho pS185 (Rabbit)	600-401-423	WB, IP, E	100 µg
Anti-Mesothelin Monoclonal Antibody	200-301-A88	IHC, WB, E	100 µg
Anti-mTOR (Rabbit)	600-401-897	WB, IP, E	100 µg
Anti-mTOR Phospho pS2448 (Rabbit)	600-401-422	IHC, WB, IP, E	100 µg
Anti-Myosin (Rabbit)	600-401-938	IP, WB, E	100 µg
Anti-Myosin phospho S19 / S20 (Rabbit)	600-401-416	IHC, IP, WB, E	100 µg
Anti-Nag-1 (Rabbit)	610-401-B87	WB, E	100 µg
Anti-NFκB p105 (Rabbit)	100-4184	WB, E	100 µl
Anti-NFκB p65 NLS specific (Rabbit)	600-401-271	IHC, IF, WB, IP, E	100 µg
Anti-NFκB cRel (Rabbit)	100-4166	WB, GS, IP, E	100 µl
Anti-NFκB p50 (NFKB1) (Rabbit)	100-4164	IHC, WB, GS, IP, E	100 µl
Anti-NFκB p52 (Rabbit)	100-4185	WB, GS, IP, E	100 µl
Anti-NFκB p65 (Rel A) N-TERMINAL SPECIFIC (Rabbit)	100-4165N	WB, IP, E	100 µl
Anti-NFκB p65 (Rel A) (Mouse Mab)	200-301-065	IHC, IF, WB, IP, E	100 µg
Anti-NFκB p65 (Rel A) (Rabbit)	100-4165	IHC, WB, GS, IP, E	100 µl
Anti-NFκB p65 (Rel A) Phospho pS276 (Rabbit)	100-401-264	WB, E	100 µl
Anti-NFκB p65 (Rel A) Phospho pS529 (Rabbit)	100-401-266	WB, IP, E	100 µl
Anti-NFκB p65 (Rel A) Phospho pS536 (Rabbit)	600-401-265	IHC, WB, IP, E	100 µg
Anti-Osteopontin (Rabbit)	100-401-404	IHC, IP, WB, E	200 µL
Anti-p21 (Mouse Mab)	200-301-171	WB, IP, E	100 µl
Anti-p27 (Rabbit)	100-401-172	WB, IP, E	100 µl
Anti-p53 (Mouse Mab)	200-301-174	ChIP, IF, IHC, WB, IP, E	100 µg
Anti-p70 S6 Kinase (Rabbit)	600-401-942	WB, IP, E	100 µg
Anti-Pdcd4 (Rabbit)	600-401-965	IHC, WB, IP, E	100 µg
Anti-Pdcd4 Phospho pS457 (Mouse Mab)	200-301-964	IHC, WB, IP, E	100 µg
Anti-PDK1 (Rabbit)	600-401-411	WB, IP, E	100 µg
Anti-PPAR alpha (Rabbit)	600-401-421	IHC, WB, E	100 µg
Anti-PPAR delta (Rabbit)	600-401-420	WB, E	100 µg
Anti-PTEN (Rabbit)	600-401-A90	WB, IP, E	100 µg
Anti-PTEN-P1 Phospho pS29/pT32 (Rabbit)	600-401-859	WB, IP, E	100 µg
Anti-SFRP1 (Rabbit)	600-401-475	IF, IHC, WB, E	100 µg
Anti-SMAD3 (Rabbit)	600-401-920	IHC, WB, E	100 µg
Anti-SMAD3 phospho S423 / S425 (Rabbit)	600-401-919	IHC, WB, E	100 µg
Anti-SUMO (Rabbit)	200-401-428	WB, E	500 µg
Anti-Telomerase (Rabbit)	600-401-252	IF, IHC, IP, WB, E	100 µg
Anti-TGF beta 1 (Rabbit)	600-401-432	IF, WB, E	100 µg
Anti-TNF alpha (Rabbit)	209-401-306	IHC, WB, E	1 mg
Anti-UBIQUITIN (Rabbit)	200-401-431	WB, IP, E	500 µg



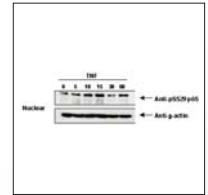
Rb anti-NFκB p50



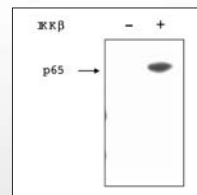
Rb anti-NFκB p65



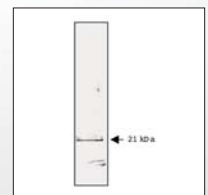
Rb anti-NFκB p65 pS276



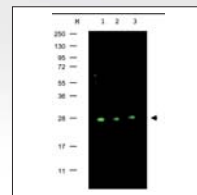
Rb anti-NFκB p65 pS529



Rb anti-NFκB p65 pS536



Ms anti-p21



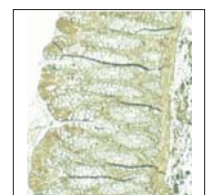
Rb anti-p27



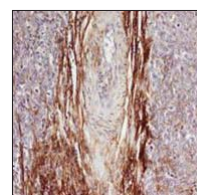
Ms anti-p53



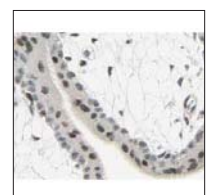
Rb anti-p70 S6



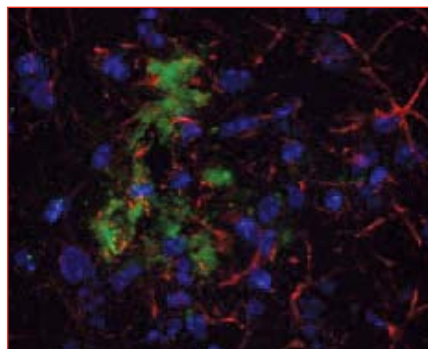
Rb anti-Pdcd4



Rb anti-Osteopontin



Rb anti-SMAD3



Anti-Beta Amyloid Antibody

Catalog# 600-401-253 Size: 100 ug

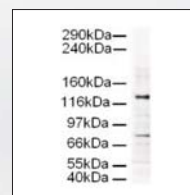
Tested Applications: IF Microscopy, Immunohistochemistry, Western Blot, ELISA

Beta amyloid antibody shows a 40-50 kD band consistent with a higher MW precursor is detected in western blot using whole tissue extracts from mouse brain.

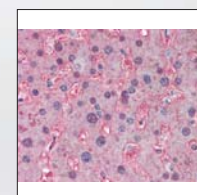
Reactivity: human, mouse

Anti-Beta Amyloid was affinity purified from monospecific antiserum by immunoaffinity chromatography. Antibody is directed against the amino terminal end of beta amyloid. Cross reactivity with beta amyloid from other species is likely but has not been determined.

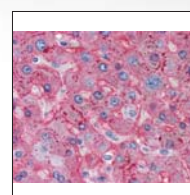
PRODUCT NAME	CATALOG#	APPLICATIONS	SIZE
Product	Catalog #	Applications	Size
Anti-ABCA4 (Rim Protein) Monoclonal Antibody	200-301-D05	IHC, WB, E	100 ul
Anti-Alpha Synuclein Monoclonal Antibody	500-301-E56	IF, WB, E	100 µL
Anti-Amyloid Oligomers (A11) (Rabbit)	200-401-E88	IHC, IP, WB, E	100 ul
Anti-AP2A (Goat)	600-101-287	WB, IP, E	100 µg
Anti-AP3D1 (Goat)	600-101-290	WB, IP, E	100 µg
Anti-Apolipoprotein A-1 (Human) (GOAT)	600-101-109	IHC, WB, E	1.0 mg
Anti-Apolipoprotein B (Human) (GOAT)	600-101-111	IHC, WB, E	1.0 mg
Anti-Apolipoprotein E (Human) (GOAT)	600-101-197	IHC, WB, E	500 µg
Anti-Apolipoprotein J (Goat)	600-101-198	IHC, IP, WB, E	500 µg
Anti-Beta Amyloid (Rabbit)	600-401-253	IHC, WB, IP, E	100 µg
Anti-Beta Amyloid protein 40 (Rabbit)	600-401-J10	IF, IHC, WB, E	50 µg
Anti-Beta Amyloid pyro E11 (Rabbit)	600-401-J13	IF, IHC, WB, E	50 µg
Anti-Beta Amyloid pyro E3 (Rabbit)	600-401-J14	IF, IHC, WB, E	50 µg
Anti-Calretinin (Sheep)	200-601-D13	IF, IHC, WB, E	100 ul
Anti-CaM Kinase II (Rabbit)	600-401-873	WB, E	100 µg
Anti-CaM Kinase II Monoclonal Antibody	200-301-F00	IF, IHC, IP, WB, E	100 ul
Anti-CaM Kinase II Phospho T286 (Rabbit)	612-401-C71	WB, E	100 ul
Anti-CaM Kinase II Phospho T305 (Rabbit)	112-401-C72	WB, E	100 ul
Anti-Catalase (Rabbit)	200-401-051	WB, E	100 µL
Anti-ChAT (Choline Acetyltransferase) (Rabbit)	100-401-D16	IHC, WB, E	100 µL
Anti-COX-2 (Rabbit)	100-401-226	WB, IP, E	100 µl
Anti-Dab1 (400-555) (Mouse) (Rabbit)	100-401-225	IHC, WB, IP, E	100 µl
Anti-DELTA-4 (Rabbit)	600-401-696	IHC, WB, IP, E	100 µg
Anti-Dopamine Transporter (Rabbit)	600-401-C75	IHC, WB, E	100 ul
Anti-EGR-1 (Rabbit)	600-401-693	IHC, WB, IP, E	100 µg
Anti-FREQUENIN (RABBIT)	600-401-216	IF, WB, IP, E	100 µg



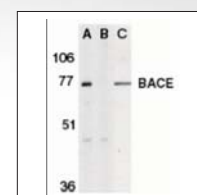
Gt anti-AP3D1



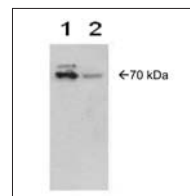
Gt anti-Apolipoprotein A1



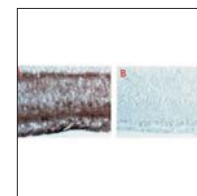
Gt anti-Apolipoprotein B



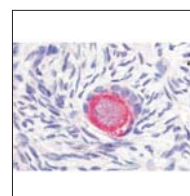
Rb anti-BACE



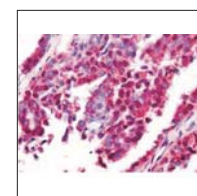
Rb anti-COX-2



Rb anti-Dab1

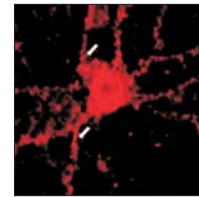


Rb anti-DELTA-4



Rb anti-EGR-1

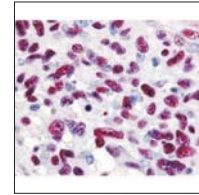
PRODUCT NAME	CATALOG#	APPLICATIONS	SIZE
Anti-GABA(A) Receptor beta 3 pS408/pS409 (Rabbit)	612-401-D51	WB, E	100 ul
Anti-GABA(A) Receptor delta (Rabbit)	600-401-C80	IHC, IP, WB, E	100 ul
Anti-GABA(B) Receptor 2 Phospho pS783 (Rabbit)	612-401-D53	IF, WB, E	100 ul
Anti-GFP Monoclonal Antibody	600-301-215	IF, IHC, IP, WB, E	1.0 mg
Anti-Gli-1 (Rabbit)	100-401-223	IHC, WB, E	100 µl
Anti-Gli-2 (Rabbit)	600-401-845	IHC, WB, IP, E	100 µg
Anti-Gli-3 (Rabbit)	600-401-694	IHC, WB, E	100 µg
Anti-GluR2 Phospho S880 (Rabbit) Antibody	612-401-D64	WB, E	100 ul
Anti-Heat Shock Protein 27 (HSP27) (Mouse Mab)	200-301-243	IHC, WB, IP, E	100 µg
Anti-Huntington Phospho pS421(Rabbit)	600-401-433	IHC, WB, IP, E	100 µg
Anti-Jagged-1 (Rabbit)	200-401-698	IHC, IF, WB, IP, E	500 µg
Anti-Leptin (Rabbit)	210-401-320	IHC, WB, E	100 µg
Anti-MBP (Myelin Basic Protein) (Chicken)	200-901-D81	IF, WB, E	100 µg
Anti-Mouse Gli-2 (Rabbit)	600-401-695	IHC, WB, E	100 µg
Anti-Nestin (Rabbit)	600-401-417	WB, IP, E	100 µg
Anti-Neuraminidase2 (Neu2) (Rabbit)	600-401-850	WB, IP, E	100 µg
Anti-Neurofilament H Monoclonal Antibody	200-301-D82	IF, WB, E	100 µl
Anti-Neurofilament L Monoclonal Antibody	200-301-D83	IF, WB, E	100 µl
Anti-Neurofilament M Monoclonal Antibody	212-301-D84	IF, WB, E	100 µl
Anti-Nitrotyrosine Monoclonal Antibody	200-301-A98	IHC, WB, IP, E	100 µg
Anti-NogoA (Rabbit)	600-401-C01	IHC, WB, E	100 µg
Anti-NOTCH 1 (Cleaved N terminal) (Rabbit)	100-401-407	WB, IP, E	200 µl
Anti-NOTCH 1 (intra) (Human specific) (Rabbit)	100-401-405	WB, IP, E	200 µl
Anti-NOTCH 2 (Cleaved N terminal) (Rabbit)	100-401-408	WB, IP, E	200 µl
Anti-NOTCH 2 (intra) (Human specific) (Rabbit)	100-401-406	WB, IP, E	200 µl
Anti-PACRG (Rabbit)	600-401-474	WB, E	100 µg
Anti-Potassium Chloride Cotransporter pS940 (Rabbit)	612-401-E15	WB, E	100 ul
Anti-ROBO-1 (Rabbit)	600-401-692	IHC, WB, E	100 µg
Anti-S100 Protein (Rabbit)	200-401-874	IHC, WB, E	500 µg
Anti-Selenoprotein W (Rabbit)	600-401-A29	WB, IP, E	100 µg
Anti-SH3GL1 Monoclonal Antibody	200-301-G41	IF, IHC, IP, WB, E	100 ul
Anti-SLIT-1 (Rabbit)	600-401-860	WB, IP, E	100 µg
Anti-SLIT-2 (Rabbit)	600-401-846	WB, IP, E	100 µg
Anti-SLIT-3 (Rabbit)	600-401-884	WB, IP, E	100 µg
Anti-Superoxide Dismutase (Rabbit)	200-4191-0100	WB, E	100 µg
Anti-Synapsin I (Rabbit)	100-401-C92	WB, E	50 µl
Anti-Tamalin (Rabbit)	600-401-988	WB, E	100 µg
Anti-Tau Monoclonal Antibody	200-C01-B33	IHC, WB, IP, E	100 µl
Anti-Tau phospho S416 (Rabbit)	612-401-E42	WB, E	100 µl
Anti-Tetanus Toxin fragment C (TTFC) (Rabbit)	100-401-894	WB, IP, E	100 µl
Anti-TrkB (Rabbit)	612-401-E47	WB, E	100 µl
Anti-Zic-1 (Mouse/Human) (Rabbit)	200-401-159	WB, IP, E	100 µg
Anti-ZIC-2 (Rabbit)	600-401-848	WB, IP, E	100 µg



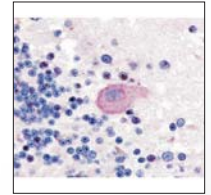
Rb anti-Frequenin



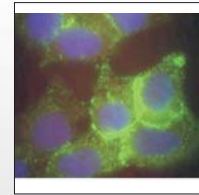
Rb anti-Gli-2



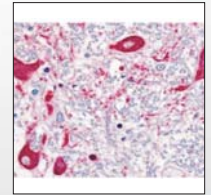
Rb anti-Gli-3



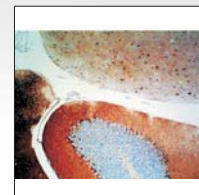
Rb anti-Huntington pS421



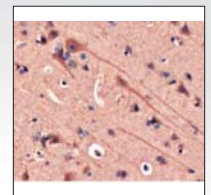
Rb anti-Jagged



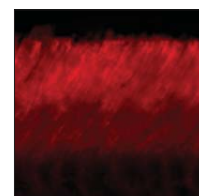
Rb anti-ROBO-1



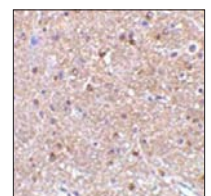
Rb anti-S100 Protein



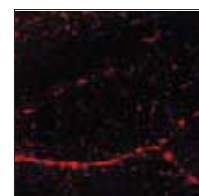
Rb Mab anti-Tau



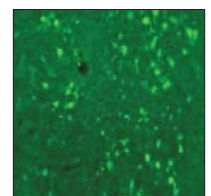
Rb anti-ABCA4



Rb anti-NogoA



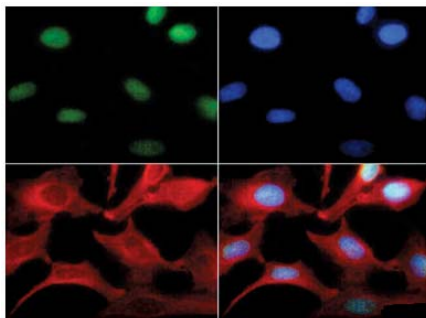
Rb anti-Tamalin



Rb anti-SMAD3

Epigenetics

Anti-Histone H3 (mono methyl K4) Antibody



Catalog# 600-401-I57 Size: 50 ug

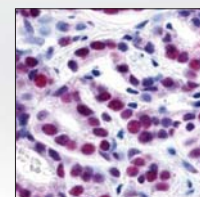
Tested Applications: ChIP, IF Microscopy, Immunohistochemistry, Western Blot, ELISA

Antibody is specific for mono-methylated Lysine 4 of histone H3. Does not recognize di- or tri-methyl Lysine 4 nor methylation at Lysine 9.

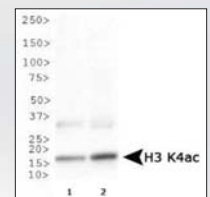
Reactivity: human, mouse, C. elegans, rat, chicken, Xenopus, Drosophila, plant

Anti-Histone H3 [Monomethyl Lys4] was affinity purified from monospecific antiserum by immunoaffinity chromatography. This antibody reacts with human Histone H3.2. This gene is intronless and encodes a member of the histone H3 family. Transcripts from this gene lack polyA tails; instead, they contain a palindromic termination element.

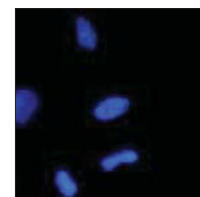
PRODUCT NAME	CATALOG#	APPLICATIONS	SIZE
Anti-14-3-3 (Rabbit)	612-401-D01	WB, E	100 µg
Anti-APRMT6 (Rabbit)	100-401-I04	WB, E	200 µL
Anti-ATDC Ac-K116 (Rabbit)	600-401-B16	WB, E	100 µg
Anti-ATF6 Monoclonal Antibody	200-301-H56	WB, E	100 µg
Anti-Blimp1 / PRDM1 (Rabbit)	600-401-B52	WB, E	100 µg
Anti-BRRN-1 (Rabbit)	600-401-682	WB, E	100 µg
Anti-CENP-Q (Rabbit)	200-401-B48	WB, E	100 µg
Anti-Co-Rest/RCOR1 Monoclonal Antibody	200-301-F16	IHC, IP, WB	100 µg
Anti-CREB-1 (Rabbit)	100-401-195	GS, WB, E	100 ml
Anti-CTCF (Rabbit)	600-401-C42	WB, E	100 µg
Anti-Dicer (Rabbit)	200-401-H68	IF, WB	100 µg
Anti-Dnmt1 Monoclonal Antibody	200-301-H69	IHC, WB, E	100 µg
Anti-Dnmt3a Monoclonal Antibody	200-301-H70	IF, WB, E	100 µg
Anti-Dnmt3b Monoclonal Antibody	200-301-H71	IF, IP, WB, E	100 µg
Anti-Dnmt3L (Rabbit)	600-401-454	IP, WB, E	100 µg
Anti-Dnmt3L Monoclonal Antibody	209-301-F22	IF, IHC, IP, WB, E	100 µg
Anti-EZH1 (Rabbit)	200-401-H75	WB, E	100 µg
Anti-HB9 (Rabbit)	200-401-H78	IHC, WB, E	100 µg
Anti-HDAC1 (Rabbit)	600-401-879	IHC, WB, E	100 µg
Anti-HDAC1 (Rabbit)	600-401-J16	IF, IHC, WB, E	100 µg
Anti-HDAC2 (Rabbit)	600-401-J18	IF, IHC, WB, E	100 µg
Anti-HDAC4 (Rabbit)	600-401-J20	IHC, WB, E	100 µg
Anti-HDAC5 (Rabbit)	600-401-J21	WB, E	100 µg
Anti-HDAC7 (Rabbit)	600-401-J22	IF, IHC, WB, E	100 µg
Anti-HDAC11 (Rabbit)	600-401-J17	IF, IHC, WB, E	100 µg



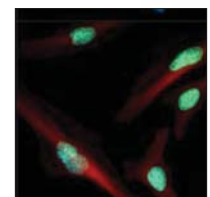
Rb anti-HDAC1



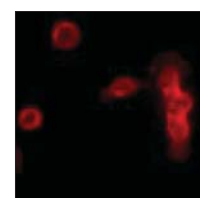
Rb anti-H3 K4ac



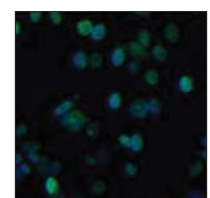
Rb anti-H3 ac-Lys18



Rb anti-H3 ac-Lys4

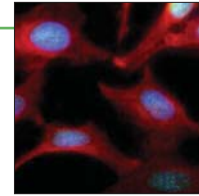


Rb anti-H3 Me2-Lys18

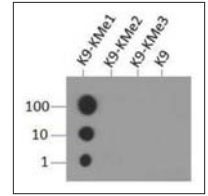


Rb anti-H3 Me2-Lys36

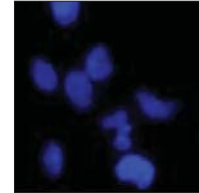
PRODUCT NAME	CATALOG#	APPLICATIONS	SIZE
Anti-Histone H2AvD pS137 (Rabbit)	600-401-914	WB, E	100 µg
Anti-Histone H3 (Rabbit)	100-401-E81	WB, E	100 µl
Anti-Histone H3 K18ac (Rabbit)	600-401-I81	ChIP, IF, IHC, WB, E, Dot	50 µg
Anti-Histone H3 K18me1 (Rabbit)	600-401-I78	ChIP, IF, IHC, WB, E, Dot	50 µg
Anti-Histone H3 K18me2 (Rabbit)	600-401-I79	ChIP, IF, IHC, WB, E, Dot	50 µg
Anti-Histone H3 K18me3 (Rabbit)	600-401-I80	ChIP, IF, IHC, WB, E, Dot	50 µg
Anti-Histone H3 K23ac (Rabbit)	600-401-I82	ChIP, IF, IHC, WB, E, Dot	50 µg
Anti-Histone H3 K27Me3 (Rabbit)	600-401-I95	ChIP, IF, IHC, WB, E, Dot	50 µg
Anti-Histone H3 K27me3/pS28 (Rabbit)	600-401-I84	ChIP, IF, IHC, WB, E, Dot	50 µg
Anti-Histone H3 K36ac (Rabbit)	600-401-I89	WB, E	50 µg
Anti-Histone H3 K36me1 (Rabbit)	600-401-I86	ChIP, IF, IHC, WB, E, Dot	50 µg
Anti-Histone H3 K36me2 (Rabbit)	600-401-I87	ChIP, IF, IHC, WB, E, Dot	50 µg
Anti-Histone H3 K36me3 (Rabbit)	600-401-I88	ChIP, IF, IHC, WB, Dot	50 µg
Anti-Histone H3 K37me1 (Rabbit)	600-401-I90	WB, E	50 µg
Anti-Histone H3 K37me2 (Rabbit)	600-401-I91	ChIP, IF, IHC, WB, E, Dot	50 µg
Anti-Histone H3 K37me3 (Rabbit)	600-401-I92	ChIP, WB	50 µg
Anti-Histone H3 K4ac (Rabbit)	600-401-I60	ChIP, IF, IHC, WB, E, Dot	50 µg
Anti-Histone H3 K4me1 (Rabbit)	600-401-I57	ChIP, IF, IHC, WB, E, Dot	50 µg
Anti-Histone H3 K4me1/pT6 (Rabbit)	600-401-I61	ChIP, IF, IHC, WB, E, Dot	50 µg
Anti-Histone H3 K4me2 (Rabbit)	600-401-I58	ChIP, IF, IHC, WB, E, Dot	50 µg
Anti-Histone H3 K4me2/pT3 (Rabbit)	600-401-I55	ChIP, IF, IHC, WB, E, Dot	50 µg
Anti-Histone H3 K4me3 (Rabbit)	600-401-I59	ChIP, IF, IHC, WB, E, Dot	50 µg
Anti-Histone H3 K4me3/pT6 (Rabbit)	600-401-I62	ChIP, IF, IHC, WB, E, Dot	50 µg
Anti-Histone H3 K56me1 (Rabbit)	600-401-I93	ChIP, IF, IHC, WB, E, Dot	50 µg
Anti-Histone H3 K56me3 (Rabbit)	600-401-I94	ChIP, IF, IHC, WB, E, Dot	50 µg
Anti-Histone H3 K9ac (Rabbit)	600-401-I72	ChIP, IF, IHC, WB, E, Dot	50 µg
Anti-Histone H3 K9ac/K14ac (Rabbit)	600-401-I73	ChIP, IF, IHC, WB, E, Dot	50 µg
Anti-Histone H3 K9me1 (Rabbit)	600-401-I69	ChIP, IF, IHC, WB, E, Dot	50 µg
Anti-Histone H3 K9me1/pT6 (Rabbit)	600-401-I64	ChIP, IF, IHC, WB, E, Dot	50 µg
Anti-Histone H3 K9me2 (Rabbit)	600-401-I70	ChIP, IF, IHC, WB, E, Dot	50 µg
Anti-Histone H3 K9me2/pT6 (Rabbit)	600-401-I65	ChIP, IF, IHC, WB, E, Dot	50 µg
Anti-Histone H3 K9me3 (Rabbit)	600-401-I71	ChIP, IF, IHC, WB, E, Dot	50 µg
Anti-Histone H3 K9me3/pT6 (Rabbit)	600-401-I66	ChIP, IF, IHC, WB, E, Dot	50 µg
Anti-Histone H3 pS10 (Rabbit)	600-401-I74	ChIP, IF, IHC, WB, E, Dot	50 µg
Anti-Histone H3 pS10/pT11 (Rabbit)	600-401-I75	ChIP, IF, IHC, WB, E, Dot	50 µg
Anti-Histone H3 pS28 (Rabbit)	600-401-I83	ChIP, IF, IHC, WB, E, Dot	50 µg
Anti-Histone H3 pT11 (Rabbit)	600-401-I76	ChIP, IF, IHC, WB, E, Dot	50 µg
Anti-Histone H3 pT3/K4ac (Rabbit)	600-401-I56	ChIP, IF, IHC, WB, E, Dot	50 µg
Anti-Histone H3 pT3/K4me1 (Rabbit)	600-401-I54	ChIP, IF, IHC, WB, E, Dot	50 µg
Anti-Histone H3 pT6 (Rabbit)	600-401-I63	ChIP, IF, IHC, WB, E, Dot	50 µg
Anti-Histone H3 R17me2a (Rabbit)	600-401-I77	ChIP, IF, IHC, WB, E, Dot	50 µg
Anti-Histone H3 R2me1 (Rabbit)	600-401-I52	ChIP, IF, IHC, WB, E, Dot	50 µg
Anti-Histone H3 R2me2a (Rabbit)	600-401-I53	ICC, IF, IHC, WB, E, Dot	50 µg
Anti-Histone H3 R2me2s/K4me2 (Rabbit)	600-401-I85	ChIP, IF, IHC, WB, E, Dot	50 µg
Anti-Histone H3 R8me2a (Rabbit)	600-401-I67	ChIP, IF, IHC, WB, E, Dot	50 µg



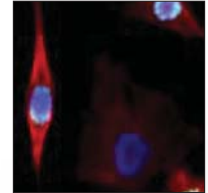
Rb anti-H3 Me1-Lys4



Rb anti-H3 Me1-Lys9



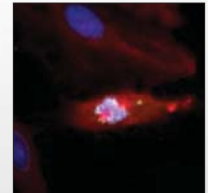
Rb anti-H3 pS10



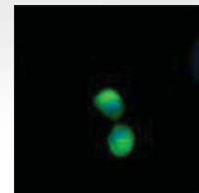
Rb anti-H3 pS28



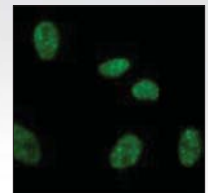
Rb anti-H3 pT3 Me2-Lys4



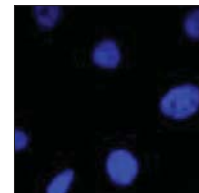
Rb anti-H3 pT3 Me1-Lys4



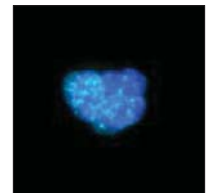
Rb anti-H3 pT11



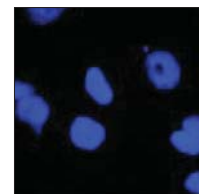
Rb anti-H3 pT11/pS10



Rb anti-H3 pT6



Rb anti-H3 pT6-Me2-Lys9

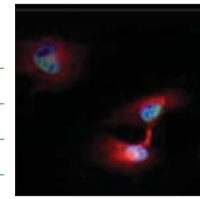


Rb anti-H3 Me3-Lys18

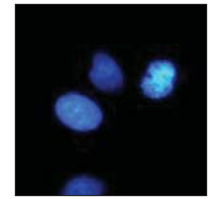


Rb anti-H3 Me3-Lys56

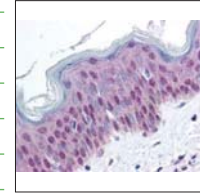
PRODUCT NAME	CATALOG#	APPLICATIONS	SIZE
Anti-Histone H3 R8me2s (Rabbit)	600-401-I68	ChIP, WB, Dot	50 µg
Anti-Histone H4 K16ac (Rabbit)	600-401-J00	ChIP, IF, IHC, WB, E, Dot	50 µg
Anti-Histone H4 K20me1 (Rabbit)	600-401-J01	ChIP, IF, IHC, WB, E, Dot	50 µg
Anti-Histone H4 K20me2 (Rabbit)	600-401-J02	ChIP, IF, IHC, WB	100 µg
Anti-Histone H4 K5ac (Rabbit)	600-401-I98	ChIP, IHC, WB, E, Dot	50 µg
Anti-Histone H4 K8ac (Rabbit)	600-401-I99	ChIP, IF, IHC, WB, E, Dot	50 µg
Anti-Histone H4 pS1 (Rabbit)	600-401-I96	ChIP, IF, IHC, WB, E, Dot	50 µg
Anti-Histone H4 R3me1 (Rabbit)	600-401-I97	ChIP, IF, IHC, WB, E, Dot	50 µg
Anti-HMGN pS20/pS24 (Rabbit)	600-401-898	IHC, WB, E	100 µg
Anti-KLF4 (Rabbit)	200-401-H88	F, IHC, WB, E	100 µg
Anti-Lysine Acetylated (Rabbit)	600-401-939	IHC, IP, WB, E	100 µg
Anti-Lysine Methylated (Rabbit)	600-401-940	IHC, WB, E	100 µg
Anti-MBD3 Monoclonal Antibody	200-301-H92	WB, E	100 µg
Anti-MITF Monoclonal Antibody	200-301-H93	WB, E	100 µg
Anti-MyoD Monoclonal Antibody	200-301-H94	IF, IP, WB	100 µg
Anti-NCOA3 (Rabbit)	600-401-A40	IP, WB, E	100 µg
Anti-NFATc1 (Rabbit)	200-401-H95	WB, E	100 µg
Anti-Nur77 (Rabbit)	200-401-H99	WB, E	100 µg
Anti-p28 ING5 (Goat)	600-101-285	WB, E	100 µg
Anti-p29 ING4 (Goat)	600-101-284	WB, E	100 µg
Anti-p33 ING1 (Goat)	600-101-282	WB, E	100 µg
Anti-p47 ING3 (Goat)	600-101-283	WB, E	100 µg
Anti-p73 Monoclonal Antibody	200-301-I02	ChIP, IHC, WB	100 µg
Anti-PARP Monoclonal Antibody	200-301-I03	F, WB, E	100 µg
Anti-PCNA (Rabbit)	600-401-968	WB, E	100 µg
Anti-RING1B (Goat)	600-101-292	WB, E	100 µg
Anti-SIRT5 (Rabbit)	200-401-I14	WB, E	100 µg
Anti-STING (Rabbit)	600-401-I20	WB, E	100 µg
Anti-Tankyrase Monoclonal Antibody	200-301-I21	WB, E	100 µg



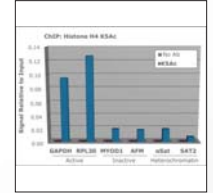
Rb anti-H3 Me3-Lys79



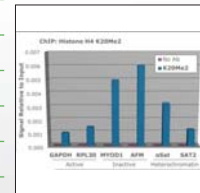
Rb anti-H3 Me3-Lys9



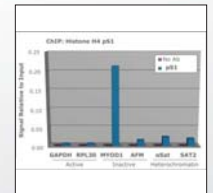
Rb anti-HMGN pS20/24



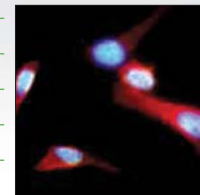
Rb anti-H4 K5Ac



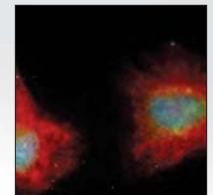
Rb anti-H4 K20me2



Rb anti-H4 pS1



Rb anti-H4 R3me1



Rb anti-RING1B



- Blocking Buffers • Cancer Research • Epitope Tags • Monoclonal Antibody Production
- NFkB Pathway • Phospho Specific Antibodies • Secondary Antibodies



BIOMOL GmbH
Waidmannstr. 35
22769 Hamburg
Germany
info@biomol.de
www.biomol.de
Fon: +49 (0)40-853 260 0
Fax: +49 (0)40-853 260 22

