



YOU HAVE THE VISION,
WE HAVE THE SUBSTANCE.

Human blood product supply service

A UK-based service for
precision medicine research

Research Donors blood biospecimen collection service



Completely personalised to meet each researcher's individual needs.

Dedicated blood collection facility in London with processing laboratory on site.

Service features



Samples delivered within short timelines



Large, diverse donor pool of healthy volunteers



Targeted donor recruitment to meet specific study needs



Donor recall options available



HLA typing available on request



Collections available 4 days per week



High-quality & high-performance samples



Comprehensive donor information provided with every sample



Comprehensive serology testing completed before shipment



Detailed characterisation information provided with every sample

Human whole blood



Collected in blood bags (CPD) & vacuum collection tubes (sodium heparin, lithium heparin, K2EDTA, K3EDTA, sodium citrate, acid citrate dextrose & cell-free DNA Streck)



Chilled & ambient options



Delivered the day after blood collection



FROZEN STOCK INVENTORY ALSO AVAILABLE



Human leukopaks



Highly concentrated PBMCs from a single donor (≥ 10 billion total nucleated cells)



Chilled, ambient & rate-controlled frozen options



HLA-typing for all donors & repeat donors available on request



Available in full, half or quarter bags & fraction sizes to meet your requirements



Delivered the day after blood collection

Human PBMCs



High viability cells processed & stored within 5 hours of blood collection



Chilled, ambient & rate-controlled frozen options

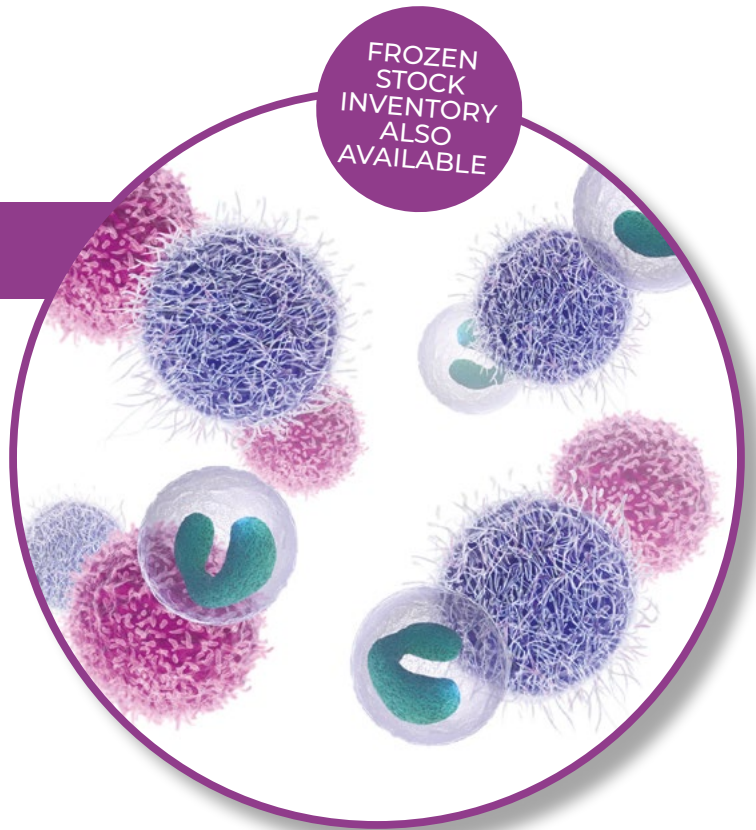


Source blood collected in blood bags (CPD) & vacuum collection tubes (sodium heparin, lithium heparin, K2EDTA, K3EDTA & sodium citrate)



Delivered the day after blood collection

FROZEN STOCK INVENTORY ALSO AVAILABLE



SEARCH OUR FROZEN STOCK INVENTORY



Purified immune cells



Isolated via negative immunomagnetic separation from human leukopaks



Rate-controlled frozen in CryoStor® CS10



High viability cells processed & stored within 5 hours of collection



Characterised monocytes, B cells, NK cells & T cells available



Search in real time to select & reserve the samples that meet your research requirements

Search our frozen stock at products.researchdonors.co.uk/search

For pricing information please visit: www.biomol.com

For research use only.
Not for use in diagnostic procedures.

Human buffy coat



Whole blood collected & processed to buffy coat



Chilled & ambient options



Source blood collected in blood bags (CPD) & vacuum collection tubes (sodium heparin, lithium heparin, K2EDTA, K3EDTA & sodium citrate)



Delivered the day after blood collection



FROZEN STOCK INVENTORY ALSO AVAILABLE

Human plasma



Single & pooled options



Chilled, ambient & frozen options



Source blood collected in blood bags (CPD) & vacuum collection tubes (sodium heparin, lithium heparin, K2EDTA, K3EDTA & sodium citrate)



Delivered the day after blood collection



FROZEN
STOCK
INVENTORY
ALSO
AVAILABLE



Human serum



Off-the-clot method provided in tubes



Single & pooled options



Chilled, ambient & frozen options



Delivered the day after blood collection

Human red blood cells



Single & pooled options



Chilled & ambient options



Source blood collected in blood bags (CPD) & vacuum collection tubes (sodium heparin, lithium heparin, K2EDTA, K3EDTA & sodium citrate)



Delivered the day after blood collection



Frozen stock inventory search



Search our stock leukopaks, PBMC, purified immune cells, plasma & serum samples in real time



Select & reserve the samples that meet your research requirements



Choice of anticoagulant, format, volume, donor age, sex, ethnicity, blood group & HLA type



Delivered on dry ice across Europe

Search our stock at products.researchdonors.co.uk/search

Ethics, licensing & consent

Research Donors only provides samples that have been collected under the most stringent levels of ethics, licensing and consent.

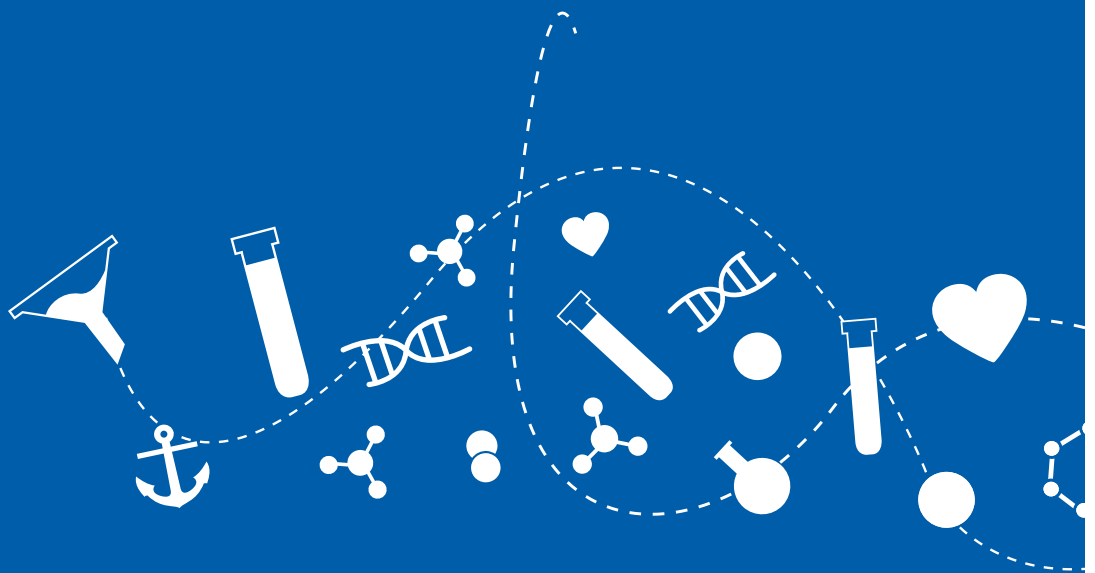
These products are for use in Biomedical Research only. They are not to be used for any form of human treatment, or for any purpose that is prohibited by law, including any use for human reproductive cloning.

All samples are:

- Collected from donors with full genetic & commercial research consent
- Collected & processed in an ISO accredited & HTA licensed facility
- Research Donors has Research Ethics (REC) approval as a Research Tissue bank & participates in the UK NEQAS QA scheme
- Samples anonymised but traceable to origin



Right Donor, Right Sample, Right Time:
Read our blog article to learn more about
Research Donors products and services!



YOU HAVE THE VISION,
WE HAVE THE SUBSTANCE.

Your Distributor:

BIOMOL GmbH

Kieler Straße 303a · 22525 Hamburg · Germany

info@biomol.de · www.biomol.de · www.biomol.com

Fon: 040-853 260 0 · Fax: 040-853 260 22

TOLL FREE IN GERMANY:

Fon: 0800-246 66 51 · Fax: 0800-246 66 52

For research use only.
Not for use in diagnostic procedures.

