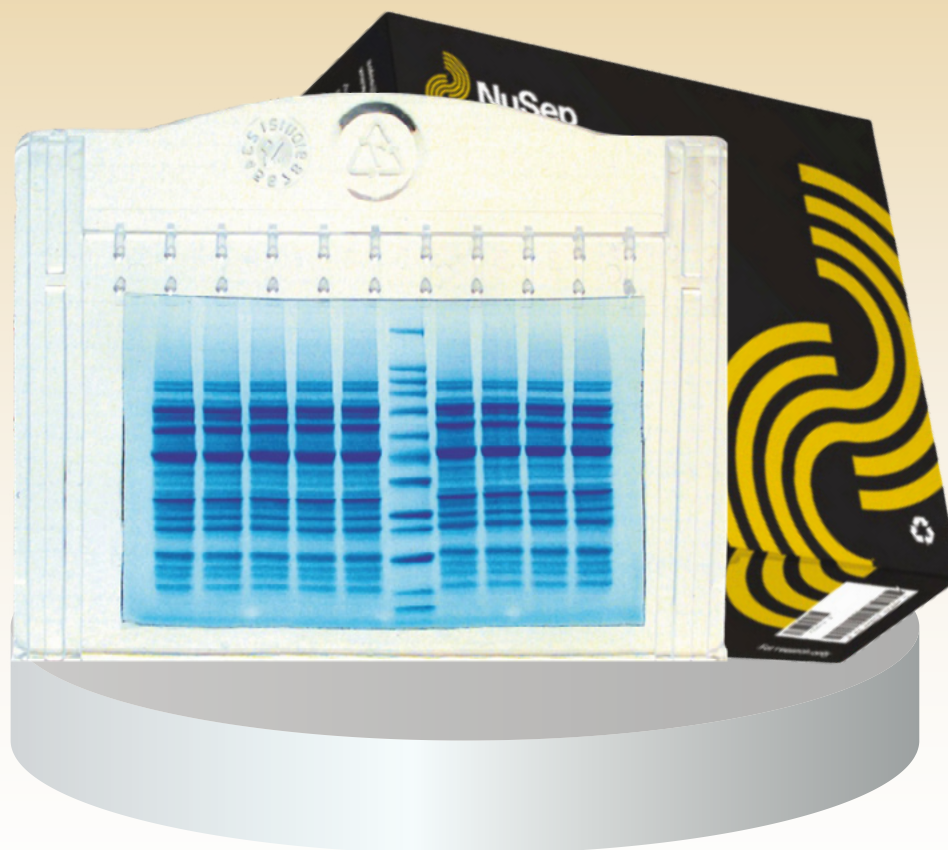


Visualize protein bands in just **2 minutes**

with nUView™ Tris-Glycine UV
reactive Precast Gels



Scan to view
product details

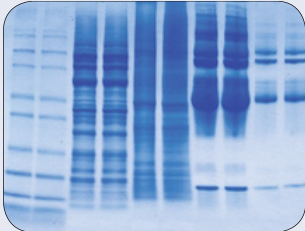


**Increase protein
recovery**

**Get faster
results**

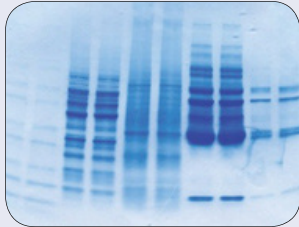
NuSep

NuSep nUView NB 4-20%



Others

TGX 4-20%



Benefits of nUView™

Increased Resolution

nUView Tris-Glycine gels are formulated to run at a constant 250 volts rather than 150 volts for the Laemmli gel (when using the Tris-Glycine/SDS running buffer). The higher voltage reduces the run time to 30 minutes compared to the 90 minutes with the Laemmli gel while maintaining a high resolution separation.

Run Times from 30 Minutes

Longer Shelf Life

With a 24-month shelf life (4°C) from date of manufacture or 6 months at room temperature (25°C)

Broader Migration Range

nUView Tris-Glycine gels offer greater resolution across a wider mass range (205 kDa to 2.5kDa). Migration patterns are available in a broad range of formulations and well configurations.

Each box contains 10 cassettes



NN Cassette
10.0 cm (width)
10.0 cm (length)
Fits XCell SureLock™



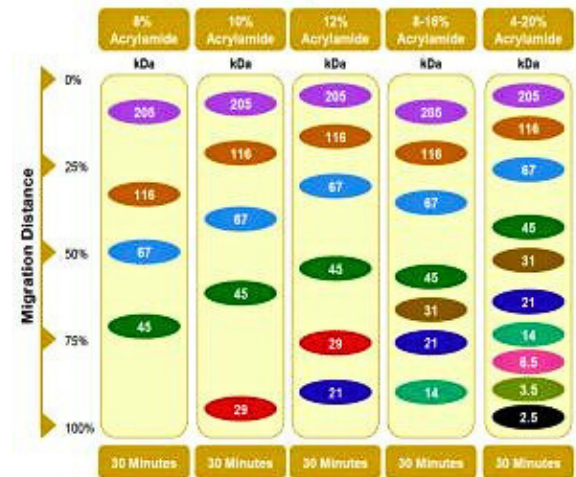
NB Cassette
10.0 cm (width)
8.5 cm (length)
Fits Mini-Protean® tanks



NG Cassette
10.0 cm (width)
8.0 cm (length)
(previously called iGels)
Compatible with all other tanks

% Acrylamide	12 Well 30 µL (Cat #)
8%	NN12-008
10%	NN12-010
12%	NN12-012
8-16%	NN12-816
4-20%	NN12-420
8%	NB12-008
10%	NB12-010
12%	NB12-010
8-16%	NB12-816
4-20%	NB12-420
8%	NG12-008
10%	NG12-010
12%	NG12-012
8-16%	NG12-816
4-20%	NG12-420

Broad Migration Range for nUView Gels



Your Distributor:



YOU HAVE THE VISION,
WE HAVE THE SUBSTANCE.

BIOMOL GmbH

Kieler Straße 303a · 22525 Hamburg · Germany

info@biomol.de · www.biomol.de · www.biomol.com

Tel. 040-853 260 0 · TOLL FREE: Tel. 0800-246 66 51