

NaveniFlex™ Cell

BRINGING PRECISION TO SPATIAL PROTEOMICS



YOU HAVE THE VISION,
WE HAVE THE SUBSTANCE.

In situ detection of protein-protein interactions, post-translational modifications and protein expressions.

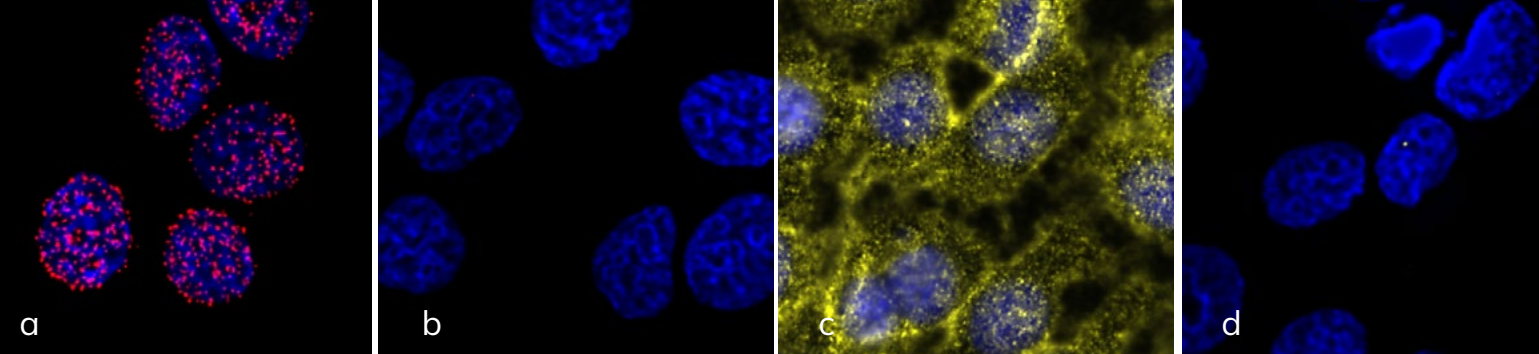
We know that diverse sample types demand tailored treatment. To maximize the value of your valuable samples, we've optimized our Flexible offering, aligning it even more closely with your needs. NaveniFlex Cell is based on our Naveni™ proximity ligation technology and is optimized for cell samples.

NaveniFlex™ Cell enables you to:

- Study protein-protein interactions and protein interplay in cell samples
- Analyze even the most low-abundance protein targets with precision
- Obtain easily quantifiable data
- Ensure your valuable samples are optimally treated
- High throughput screening with 96 well plate protocol

Compatible with established *in situ* workflows

NaveniFlex Cell serves as a secondary detection system that seamlessly integrates with your existing *in situ* workflows. It eliminates the need for specialized instrumentation, making the process hassle-free. Moreover, the digital quantification feature ensures effortless comparison of your data.



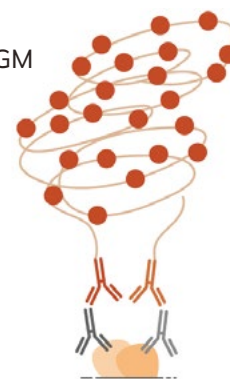
Detection of protein-protein interactions in MCF7 cells using NaveniFlex Cell MR. **a)** Shows Histone / Lamin interaction using detection with Red and **b)** shows the technical control. **c)** Shows E-Cadherin / B-catenin interaction using detection with Atto647, and **d)** shows its technical control.

The **NaveniFlex Cell** kit includes two Navenibodies conjugated to proprietary oligo arms (depicted as orange antibodies in the illustration to the right). Only when the Navenibodies are in close proximity will they trigger a rolling circle amplification reaction, resulting in a strong and distinct dot that is easily quantifiable.

Choose from six assay versions based on the primary IgG host species, mouse-rabbit, goat-rabbit and goat-mouse, and your preferred detection reagents from the fluorophore alternatives TEX615, and Atto647N. If you need other primary antibody combinations, we recommend NaveniLink, a kit for conjugating your own primary antibodies.

NaveniFlex Cell is validated on FFPE cell pellets and formaldehyde/formalin fixed cells, MCF7 and BT474 cells. For tissue samples, we recommend using our NaveniFlex Tissue kit.

NaveniFlex™ Cell MR, GR or GM
Detect proximity between
Mouse/Rabbit, Goat/Rabbit,
or Goat/Mouse primary
antibody pairs



Ordering information

Product	Code	Read out	Primary antibodies required
NaveniFlex Cell MR Red/Atto647N	NC.MR.100 Red/Atto647N	Fluorescence	Mouse & Rabbit
NaveniFlex Cell GR Red/Atto647N	NC.GR.100 Red/Atto647N	Fluorescence	Goat & Rabbit
NaveniFlex Cell GM Red/Atto647N	NC.GM.100 Red/Atto647N	Fluorescence	Goat & Mouse
Naveni Control kit	NF.CK.MR		Primary abs included
NaveniFlex Tissue MR Red/Atto647N	NT.MR.100 Red/Atto647N	Fluorescence	Mouse & Rabbit
NaveniFlex Tissue GR Red/Atto647N	NT.GR.100 Red/Atto647N	Fluorescence	Goat & Rabbit
NaveniFlex Tissue GM Red/Atto647N	NT.GM.100 Red/Atto647N	Fluorescence	Goat & Mouse

Kit size: 4 ml working solution.

NaveniLink	NL.050	For conjugation of primary antibodies (50 µg)	
------------	--------	---	--



YOU HAVE THE VISION,
WE HAVE THE SUBSTANCE.

Your Distributor:

BIOMOL GmbH
Kieler Straße 303a · 22525 Hamburg · Germany
info@biomol.de · www.biomol.de · www.biomol.com
Fon: 040-853 260 0 · Fax: 040-853 260 22

TOLL FREE IN GERMANY:
Fon: 0800-246 66 51 · Fax: 0800-246 66 52

For research use only.
Not for use in diagnostic or therapeutic procedures.

