

# Naveni<sup>®</sup> CD8/MHC-I Atto647N

ILLUMINATING FUNCTION IN SPATIAL PROTEOMICS

## Navigate immune responses with the *in situ* assay kit Naveni<sup>®</sup> CD8/MHC-I

Dive into the secrets of immune responses with our *in situ* proximity ligation assay for the detection of CD8/MHC-I interactions, providing a nuanced perspective for a detailed and accurate portrayal of the immune response. This deeper understanding becomes the cornerstone for developing targeted immunotherapies, marking a potential leap forward in precision medicine for cancer treatment.

Navinci has now developed the first commercial *in situ* proximity ligation assay for the specific detection of CD8/MHC-I interactions.

Image: CD8/MHC-I interaction in human tonsil tissue, interaction seen in red detected with CD8/MHC-I Atto647N, co-staining with CD3 (cyan) and nuclear staining (DAPI)

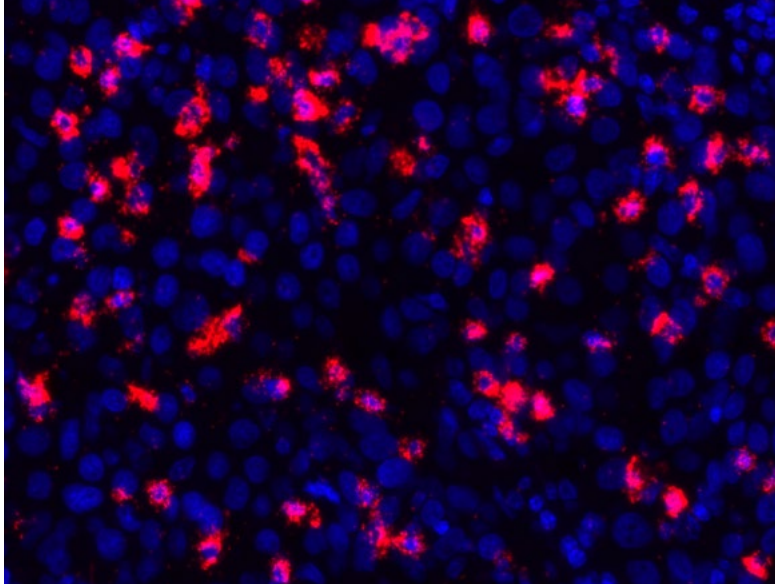
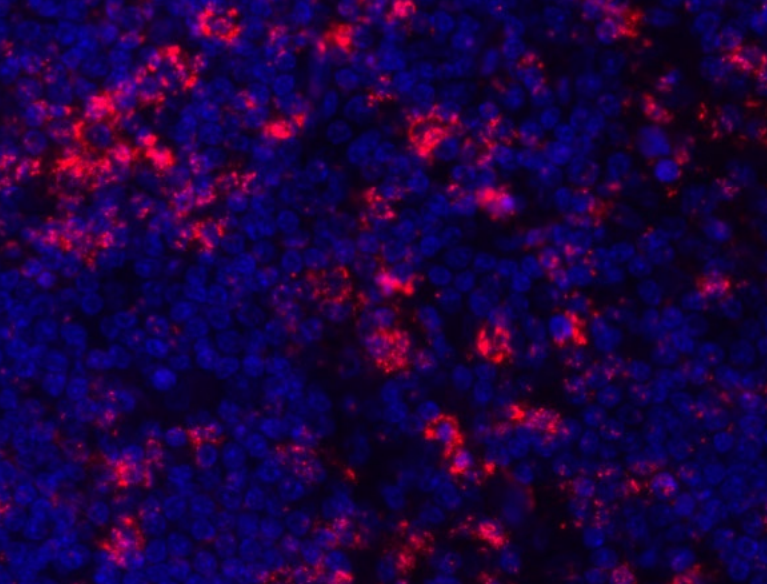
## Naveni<sup>®</sup> CD8/MHC-I enables you to:

- Detect the specific interaction of CD8/MHC-I using dual recognition
- Identify interactions of low abundant CD8/MHC-I
- Visualize CD8/MHC-I in a tissue microenvironment
- Increase the understanding of CD8/MHC-I signaling pathways
- Navigate the adaptive immune system and the activation of the CD8+ TCR

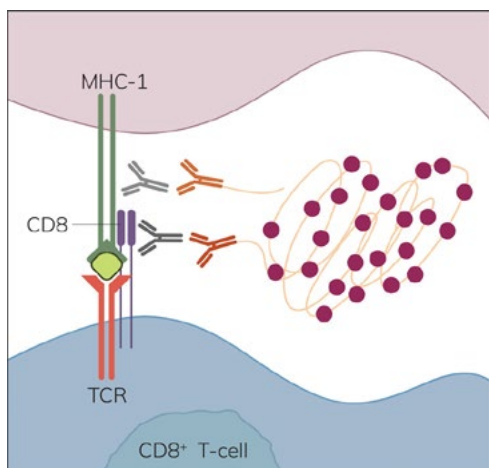
distributed by  
**biomol**  
Part of Europa Biosite

YOU HAVE THE VISION,  
WE HAVE THE SUBSTANCE.





CD8/MHC-I interaction in Hodgkin's lymphoma and Hepatocellular Carcinoma, interaction detected using Naveni® CD8/MHC-I Atto647N.



The interaction of MHC-I on a cell target with a CD8+ T-cell. CD8 is a co-receptor on the T-cell surface that is associated with the T-Cell Receptor-MHC-I interaction. The Naveni® CD8/MHC-I kit is based on our proprietary Naveni® *in situ* proximity ligation technology. The kit includes two primary antibodies of mouse anti-MHC-I and rabbit anti-CD8, respectively, and two species specific Navenibodies conjugated to proprietary oligo arms (depicted as orange antibodies). Only if the Navenibodies are in close proximity will they generate a rolling circle amplification reaction, leading to a strong and distinct signal.

## Ordering information

Product	Code	Read out	Primary antibodies required
Naveni CD8/MHC-I Atto647N	PPI.TCR01.FR.100	Fluorescence	Primary included
Naveni PD1/PD-L1 Atto647N	PPI.PDL1.FR.100	Brightfield and fluorescence	Primary included
NaveniFlex Tissue MR Red/Atto647N	NT.MR.100 Red/Atto647N	Fluorescence	Mouse & Rabbit
NaveniBright HRP/AP	NB.MR.HRP/AP.100	Brightfield	Mouse & Rabbit

Kit size: 4ml working solution.  
For research use only. Not for use in diagnostic procedures.



YOU HAVE THE VISION,  
WE HAVE THE SUBSTANCE.

For research use only.  
Not for use in diagnostic or therapeutic procedures.

**Your Distributor:**  
BIOMOL GmbH  
Kieler Straße 303a · 22525 Hamburg · Germany  
info@biomol.de · www.biomol.de · www.biomol.com  
Fon: 040-853 260 0 · Fax: 040-853 260 22

**TOLL FREE IN GERMANY:**  
Fon: 0800-246 66 51 · Fax: 0800-246 66 52

