

# QUICKBLUE PROTEIN STAIN

**FAST** Stains proteins in just 15 minutes

**SAFE** No harmful chemicals or acids

**SIMPLE** One-step application procedure

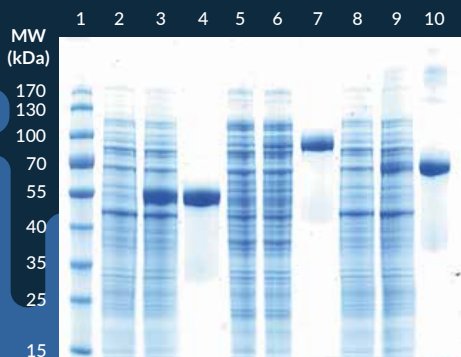
**ROBUST** Can be stored at RT

**COMPATIBLE** 100% compatible with MS

**REUSABLE** Use QuickBlue up to 3 times

SDS-PAGE made easy! QuickBlue is a one-step protein gel dye that provides you with clear, sharp bands with virtually no background, no destaining needed.

ITEM #	DESCRIPTION	SIZE	OUR PRICE
LU001000	QuickBlue Protein Stain (40 minigels w/ single use)	1 L	175.00 €



12% Nusep Tris-Gly gel

**FREE SAMPLES AVAILABLE!**



# ACUTE BAND

## PRE-STAINED PROTEIN LADDER

- **BROAD COVERAGE**
- **3-COLOR DETERMINATION**
- **CLEAR SEPARATION**



The AcuteBand Pre-stained Protein Ladder is a three-color protein standard with 10 pre-stained proteins covering a broad range of molecular weights from 6.5 to 270 kDa. Three markers show molecular weights of 30 kDa (red), 52 kDa (green) and 270 kDa (red). It is designed for monitoring protein separation during SDS-PAGE, verifying Western transfer efficiency on membranes and for approximating the size of proteins. AcuteBand is also compatible with the LICOR System. Available in two sizes (2 x 250 ul, 10 x 250 ul).

ITEM #	DESCRIPTION	SIZE	OUR PRICE
LU5001-0500	AcuteBand™ Pre-stained Protein Ladder	2 x 250 ul	180.00 €
LU5001-2500	AcuteBand™ Pre-stained Protein Ladder	10 x 250 ul	750.00 €



**FREE SAMPLES AVAILABLE!**



YOU HAVE THE VISION,  
WE HAVE THE SUBSTANCE.

**Your Distributor:**

BIOMOL GmbH  
 Kieler Straße 303a · 22525 Hamburg · Germany  
 info@biomol.de · www.biomol.de · www.biomol.com  
 Fon: 040-853 260 0

TOLL FREE IN GERMANY:

Fon: 0800-246 66 51

