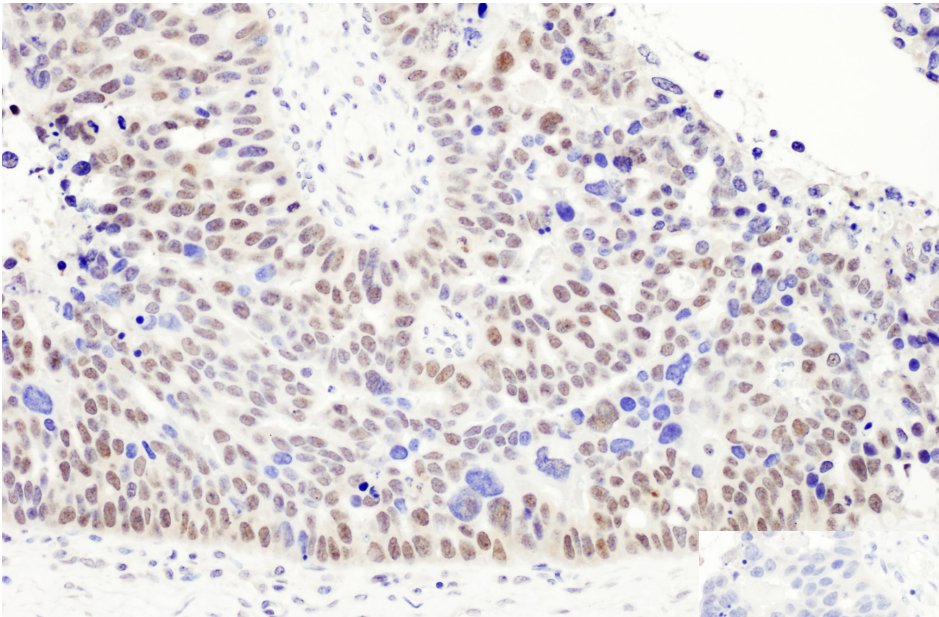


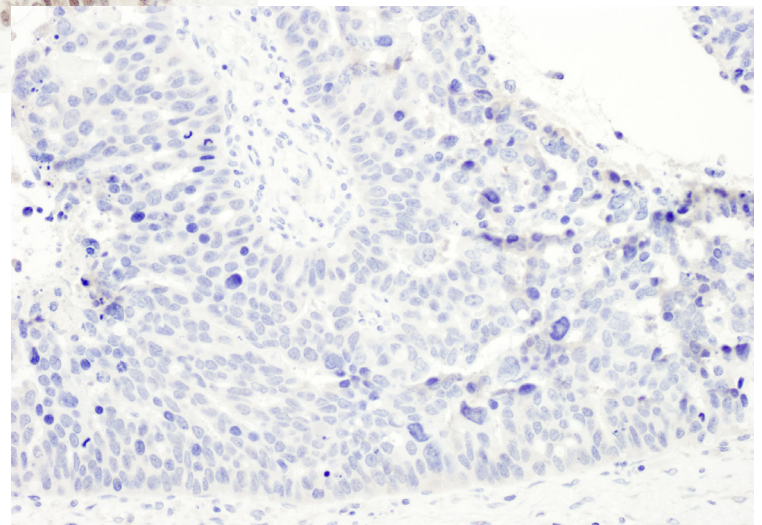
# Innately Good Antibodies



Left: Mock phosphatase treatment showing phospho-specific immunostaining of RelA (S468) in FFPE human ovarian carcinoma. Catalog number A302-064A, 1ug/ml.

Below: Phosphatase (CIP) treated control demonstrating phospho-specific immunostaining. Catalog number A302-064A, 1ug/ml.

Photos courtesy of Liz Wilson, Bethyl Laboratories



**We Make Every  
Antibody  
We Sell.**

## Select Journal Citations

Symbol	Title	Journal
SAMHD1	Phosphorylation of SAMHD1 by Cyclin A2/CDK1 Regulates Its Restriction Activity toward HIV-1.	Cell Rep. 2013 Apr 25;3(4):1036-43.
PML	Components of Promyelocytic Leukemia Nuclear Bodies (ND10) Act Cooperatively To Repress Herpesvirus Infection.	J Virol. 2013 Feb;87(4):2174-85.
PML	CK2 inhibitors increase the sensitivity of HSV-1 to interferon- beta.	Antiviral Res. 2011 Sep;91(3):259-66.

Over 200 Antibodies Targeting Innate Immunity Against Viral Infection

Really Good Antibodies

[bethyl.com](http://bethyl.com)

**BETHYL**  
LABORATORIES, INC



# Innate Immune System Antibodies

Since 1972, Bethyl has manufactured top-quality antibody products for both clinical and research applications to facilitate and accelerate cell biology-based discoveries.

Below is a sampling of select antibodies targeted toward proteins involved in innate immunity to viral infections.

Symbol	Catalog #	Product Name	Reactivity	Applications
ADAR	A311-420A	ADAR1 Antibody AbVantage™ Pack	Hu	WB, IP
BCL2	A303-675A	Bcl-2 Antibody, Affinity Purified	Hu	IP
CHUK	A310-685A	IKK-alpha Antibody AbVantage™ Pack	Hu	WB, IP, IHC-P, IF, PLA
DDX3X	A300-474A	DDX3 Antibody, Affinity Purified	Hu, Ms	WB, IP, IHC-P, IF
DDX3X	A310-136A	DDX3 Antibody AbVantage™ Pack	Hu	WB, IP, IHC-P, IF
IKKB	A301-827A	IKK-beta Antibody, Affinity Purified	Hu	WB, IP, PLA
IRF3	A300-426A	IRF3 Antibody, Affinity Purified	Hu	WB, IHC-P, IF
ITCH	A301-992A	Itch Antibody, Affinity Purified	Hu	WB
MAVS	A300-782A	MAVS/VISA Antibody, Affinity Purified	Hu	WB, IP, IHC-P, ICC, IF
MAVS	A310-243A	MAVS/VISA Antibody AbVantage™ Pack	Hu	WB, IP
PML	A310-390A	PML Antibody AbVantage™ Pack	Hu	WB, IP, PLA, IHC-P, IF
POLR3B	A301-855A	RPC2 Antibody, Affinity Purified	Hu	WB, IP, IHC-P, IF
POLR3C	A311-136A	RPC3 Antibody AbVantage™ Pack	Hu, Ms	WB, IP
POLR3D	A302-295A	POLR3D Antibody, Affinity Purified	Hu	WB, IP, IHC-P, IF
POLR3D	A310-830A	POLR3D Antibody AbVantage™ Pack	Hu	WB, IP
POLR3E	A311-361A	POLR3E Antibody AbVantage™ Pack	Hu	WB, IP
RELA	A301-823A	RelA Antibody, Affinity Purified	Hu	IP, PLA
RELA	A301-824A	RelA Antibody, Affinity Purified	Hu, Ms	WB, IP, IHC-P, IF
RELA	A302-062A	Phospho RelA (S536) Antibody, Affinity Purified	Hu	WB, IHC-P, IF
RELA	A302-063A	Phospho RelA (S529) Antibody, Affinity Purified	Hu	WB
RELA	A302-064A	Phospho RelA (S468) Antibody, Affinity Purified	Hu, Ms	WB, IHC-P, IF, PLA
RELA	A310-650A	RelA Antibody AbVantage™ Pack	Hu, Ms	WB, IP, PLA, IHC-P, IF
SAMHD1	A311-354A	SAMHD1 Antibody AbVantage™ Pack	Hu	WB, IP
TBK1	A300-093A	TBK1 Antibody, Affinity Purified	Hu	WB, IP
TNFAIP3	A302-633A	A20 Antibody, Affinity Purified	Hu	WB, IP
TRIM25	A310-661A	TRIM25 Antibody AbVantage™ Pack	Hu	WB, IP



BIOMOL GmbH  
 Waidmannstr. 35  
 22769 Hamburg  
 Germany  
 info@biomol.de  
 www.biomol.de  
 Fon: +49 (0)40-853 260 0  
 Fax: +49 (0)40-853 260 22

