

**AssayGenie**



# Validated Antibody Guide



**80,000**

**ANTIBODIES**

**Cancer | Immunology | Neuroscience | Preclinical Models**

**IHC | WB | ICC | FC | CHIP | ELISA | 20+ Species**

**Blocking | Neutralization | Cell Depletion | in vivo grade**

# MISSION & BRAND PROMISE

## THE MISSION

Our mission is to make scientists smile through innovative products, remarkable interactions with our team and our little Genies!



**COLM RYAN PhD**  
CEO & co-founder of  
Assay Genie



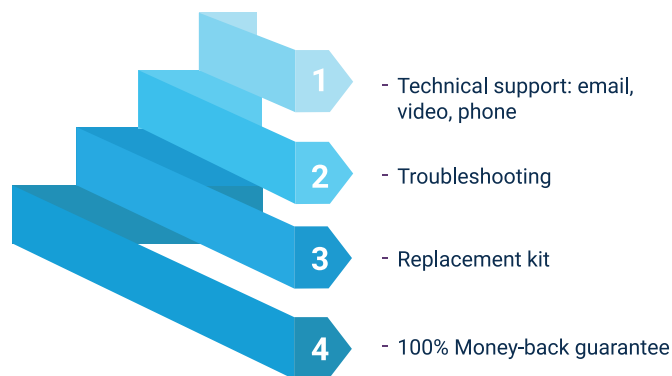
**SEÁN MAC FHEARRAIGH PhD**  
CTO & co-founder of  
Assay Genie

## Maximum Support & Guarantee

Assay Genie provides excellence in support to all our customers!

Not only do we provide you with application based support before, during and after your experiments, but on those rare occasions when problems arise, we have a defined series of customer-centric steps to ensure that you are happy with our products.

So, don't worry, we also offer a 100% money-back guarantee should our products not perform as specified.



## Rapid Global Delivery

Whether you are served by one of our trusted local distributors or are part of our direct sales network, we endeavour to ship your products to you on-time, every time!

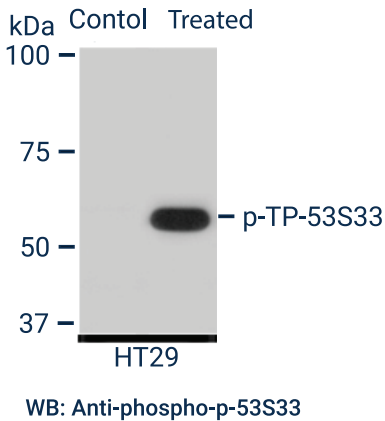
Contact us 24/7 on [www.info@assaygenie.com](mailto:www.info@assaygenie.com) to find our shipping times to your laboratory.



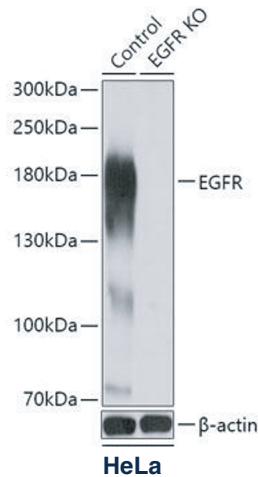
# ANTIBODY TECHNOLOGIES

Our high quality validated antibodies can be used in a variety of techniques such as: ELISA, Western Blot, Flow Cytometry, Immunofluorescence (IF), Immunohistochemistry (IHC), CHIP & CHIP-seq.

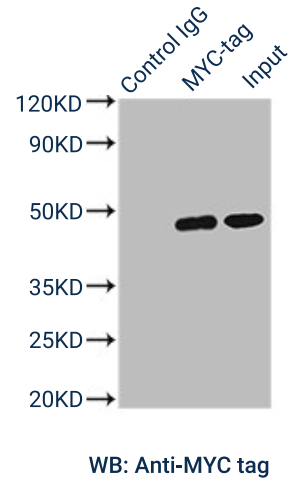
## Validated Western Blot Antibodies



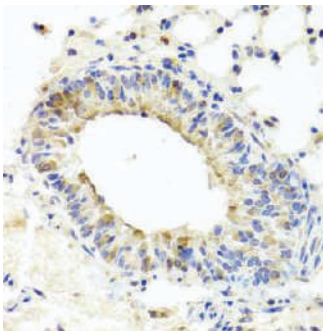
## KO Validated Antibodies



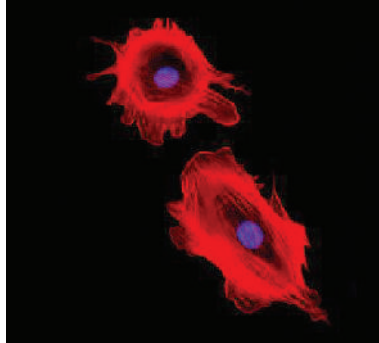
## Validated Secondary & Tag Antibodies



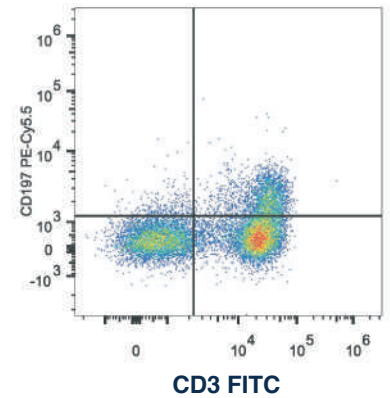
## Validated IHC Antibodies



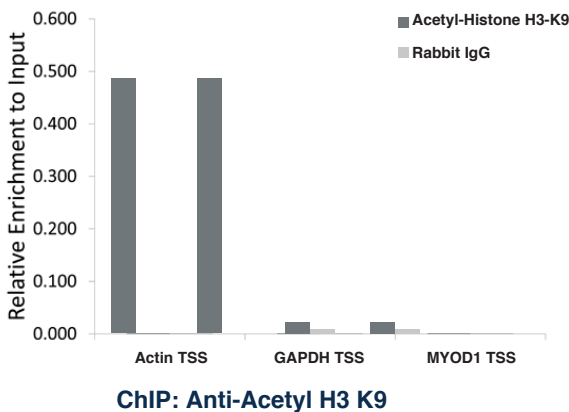
## Validated Immunofluorescence (IF) Antibodies



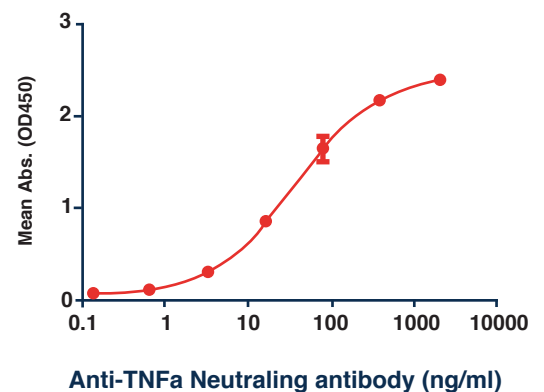
## Flow Cytometry Antibodies



## Validated Chromatin Immunoprecipitation (CHIP) Antibodies



## Anti-TNF $\alpha$ (Adalimumab biosimilar) 0.1 $\mu$ g of Human TNF $\alpha$ , His Tagged protein per well

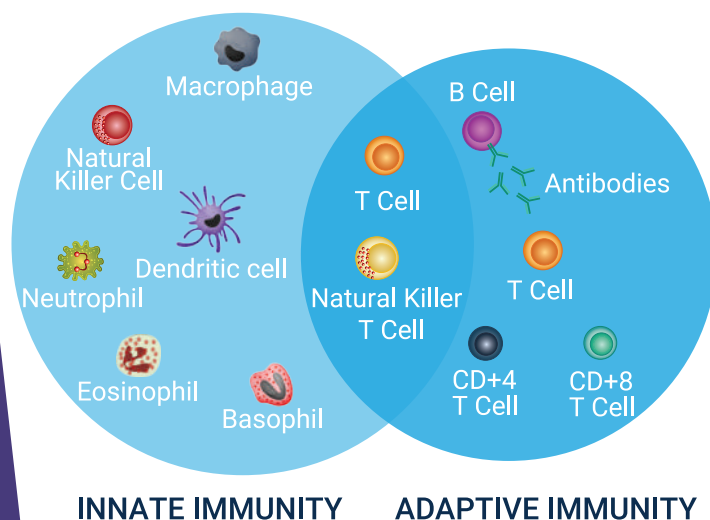


# FUNCTIONAL GRADE IN VIVO ANTIBODIES

Assay Genie in vivo functional-grade monoclonal antibodies are high purity, low endotoxin cGMP mAbs that are especially formulated for preclinical animal studies & functional assays such as blocking, neutralization, activation and cell depletion.

## Key Features

- 200 mAbs: anti-mouse, anti-human, anti-NHP & more
- Bioactive grade: blocking, neutralization, stimulation, depletion
- Very Low Endotoxin:  $\leq 0.5$  EU/mg to  $\leq 1$  EU/mg
- In vivo grade: no leachable protein A or aggregates
- Highly Purity:  $\geq 95\%$  to  $\geq 98\%$
- cGMP / ISO 9001:2015 / ISO 13485:2015
- ELISA, FC, IHC, IP, WB, ELISpot, CODEX® & CyTOF®
- 1mg, 5mg, 25mg, 50mg & 100mg pack sizes



## TOP TARGETS

PD-1, PD-L1, CTLA-4

CD3, CD3e, CD4, CD8

IFNa, IFNb & IFNg

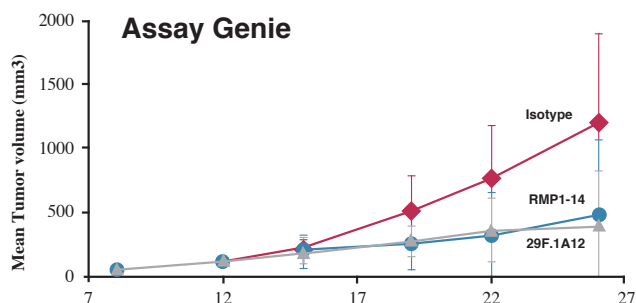
TNFa, GM-CSF, TGFb

IL-1b, IL-2, IL-4, IL-10

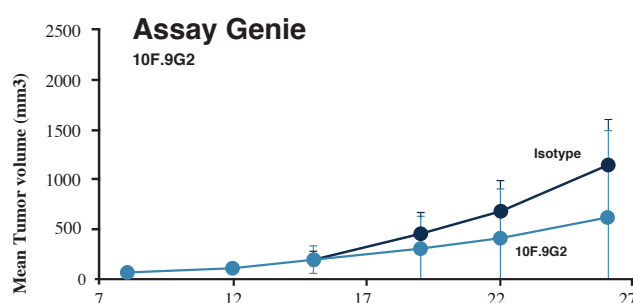
IL-6R

NK1.1

CD11c, CD14, CD16, CD7, CD318



Treatment	Tumor size Day 26 (mm <sup>3</sup> )	TGI Day 26 (%)	P-value
Isotype	1197 ± 697	-	-
RMP1-14	470 ± 597	61	0.049
29F.1A12	395 ± 432	67	0.018

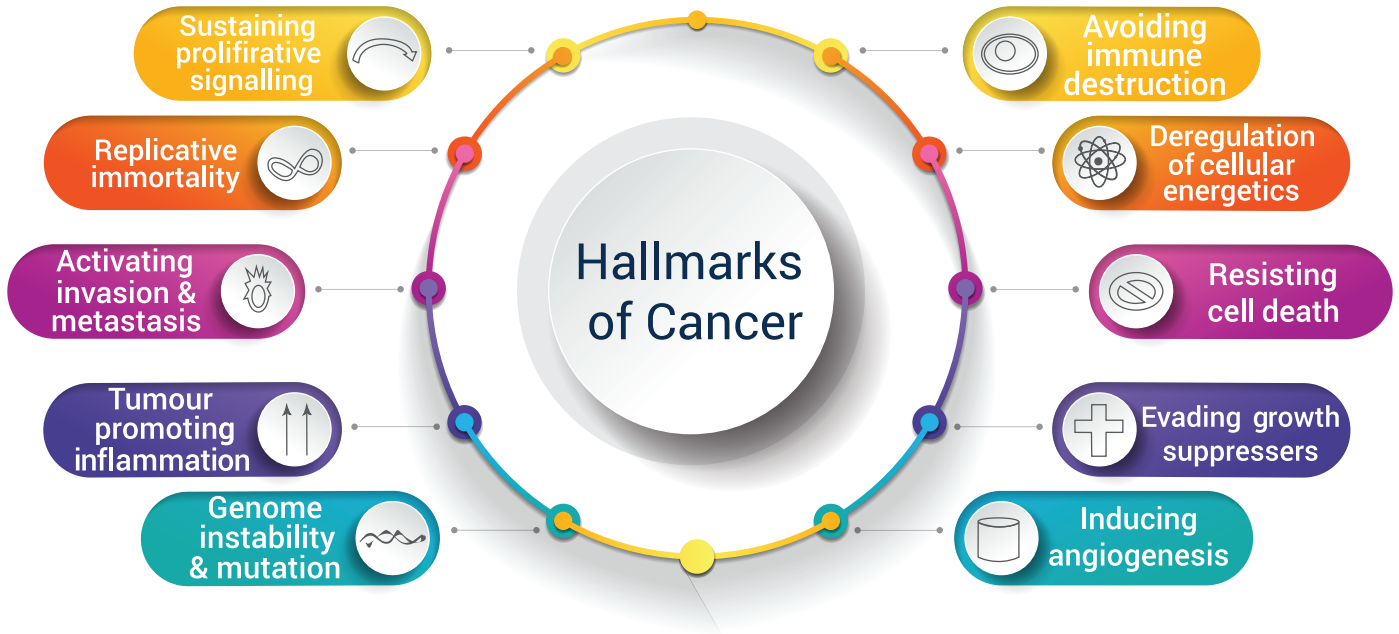


Treatment	Tumor size Day 26 (mm <sup>3</sup> )	TGI Day 26 (%)	P-value
Isotype	1281 ± 518	-	-
10F.9G2	685 ± 978	47	0.157

Independent comparison of the in vivo efficacy and tolerability of clones of mAbs anti-PD-1 [RMP1-14 and 29F.1A12] & anti-PD-L1 [10F.9G2], and isotype controls using a CT26 syngeneic model (murine colorectal carcinoma derived from BALB/c mice). All antibodies had matching isotype controls, and phosphate-buffered saline (PBS) was used as a control.

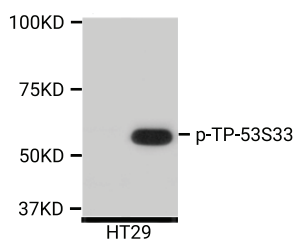
# CANCER

Cancer is defined as a group of diseases involving abnormal cell growth. During cancer development, the body's cells begin to divide without stopping and eventually spread to the surrounding tissue. The hallmarks of cancer, as defined by Douglas Hanahan and Robert A. Weinberg, comprise of ten biological capabilities acquired during the multistep development of human tumours. These have been recently updated to include abnormal metabolic pathways, inflammation, genomic instability and immune system evasion.

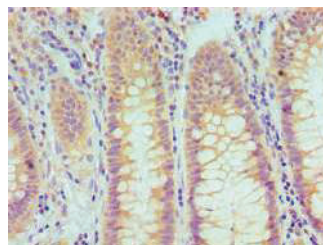


## TOP TARGETS

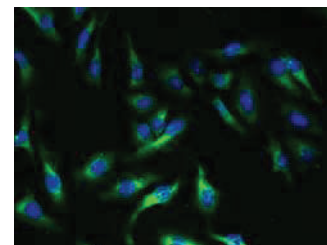
p53	ALK	IGF
AKT1	EGFR	PDL1
ERK1   Phospho-ERK1	TGFb	BCL2



WB: Anti-phospho-p-53S33



IHC: anti-p53



IF: anti-TSHR

Search

Over 80,000 Antibodies @ [www.assaygenie.com](http://www.assaygenie.com)



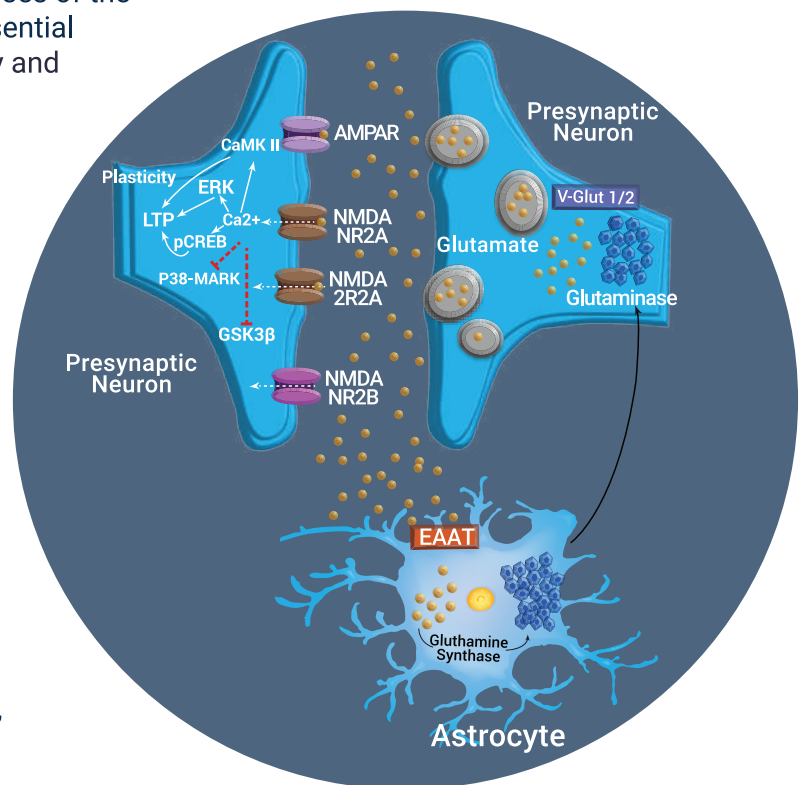
# NEUROSCIENCE

Neuroscience investigates the complex processes of the nervous system enabling investigation into essential functions such as movement, memory and learning.

Medical applications of neuroscience research encompass 3 key areas.

1. Synapses, cognition and behaviour.
2. Neurodegeneration, neuroprotection and neurorepair.
3. Neuropsychiatry and neurodevelopmental disorders.

Many neurological disorders under investigation combine a variety of different disciplines such as immunology, biochemistry, pharmacology, physiology and psychology.



NMDA signalling pathway

## TOP TARGETS

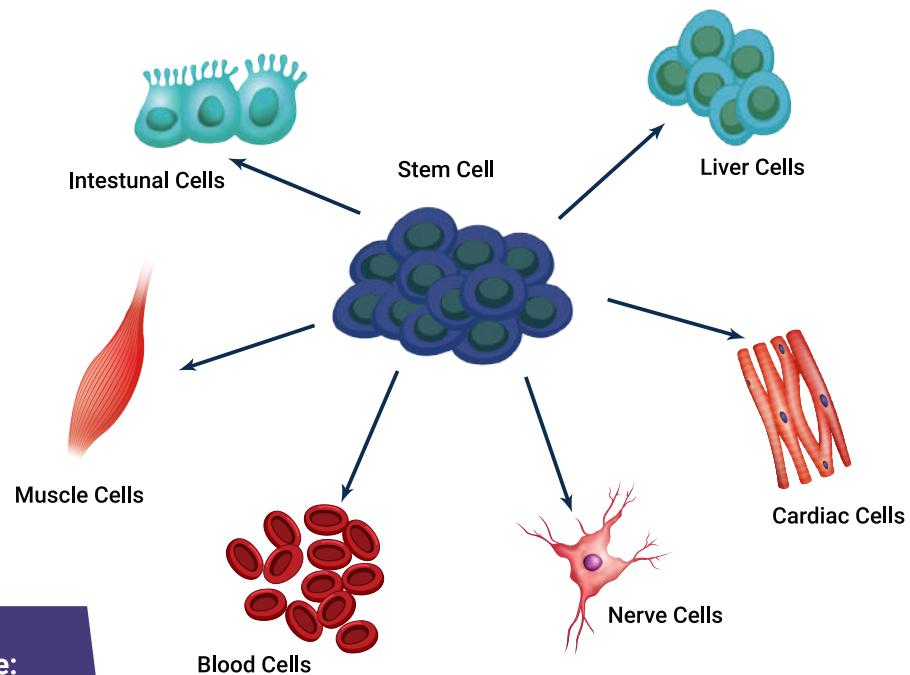
GFAP	GAD65
APP	GFP
BDNF	GPCRs
NGF	NFL
NeuN/RBFOX3	NOS

Search

Over 80,000 Antibodies @ [www.assaygenie.com](http://www.assaygenie.com)

# STEM CELLS AND DEVELOPMENTAL BIOLOGY

Stem cells are multipotent cells with the ability to differentiate into a multitude of cell types. Developmental biology primarily focuses on how genes regulate cell growth and differentiation from stem cells to the formation of tissues and organs. Human embryonic stem cells serve as an unlimited source for cells and as a result of this offer great therapeutic potential.



Key areas of stem cells research include:

- Hematopoietic Stem Cells
- Cardiac Stem Cells
- Cancer Stem Cells
- Neuronal Stem Cells

## TOP TARGETS

NANOG	CD34   CD133   CD56   CD105   CD271
HOXA1 - HOXA6	SSEA1/FUT4
OCT4/OCT3/POU5F1	Podocalyxin/TRA-1-60
SOX1 - SOX10	Nestin
CBX2 - CBX8	KIT/SCF-R

Search

Over 80,000 Antibodies @ [www.assaygenie.com](http://www.assaygenie.com)

# SPECIES SPECIFIC VALIDATED ANTIBODIES



**Horse Validated  
Antibodies**



**Goat Validated  
Antibodies**



**Cat Validated  
Antibodies**



**Rabbit Validated  
Antibodies**



**Dog Validated  
Antibodies**



**Sheep Validated  
Antibodies**



**Hamster Validated  
Antibodies**



**Mouse Validated  
Antibodies**



**Guinea Pig Validated  
Antibodies**



**Monkey Validated  
Antibodies**



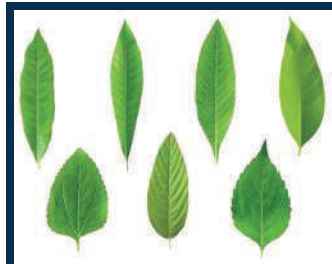
**Bird Validated  
Antibodies**



**Porcine Validated  
Antibodies**



**Fish Validated  
Antibodies**



**Plant Validated  
Antibodies**



**Bovine Validated  
Antibodies**



**Rat Validated  
Antibodies**



**Chicken Validated  
Antibodies**



**Human Validated  
Antibodies**

**AssayGenie** 