



Rabbit Monoclonal Antibodies


by recombinant technology





About arigo

Have you noticed a **squirrel** hidden in the logo of arigo? arigo Biolaboratories use the squirrel as a symbol and aim to provide quality **antibodies**, antibody duos / panels, and ELISA kits to facilitate scientific research. Our specialty **antibody duos** are smart solution for experiments. Antibody panels consist of multiple antibodies grouped together according to the scientific relevance. arigo also offers diverse **ELISA kits** to meet the needs in the emerging research world.



Contents

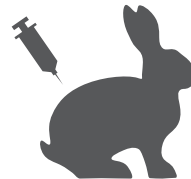
- 02 SQab clone** Recombinant Rabbit mAbs
- 03 Technology**
- 04 Advantages** of SQab clone Rabbit mAbs
- 05 Why SQab clones**
 - Better than Mouse mAbs
 - Better than other Rabbit mAbs
- 07 Featured SQab** clone Rabbit mAbs
 - General Cancer Pathology
 - Lung Cancer Pathology
 - Breast Cancer Pathology
 - Gastrointestinal Cancer Pathology
 - Microsatellite instability (MSI)
 - Cell Biology
 - PD-L1 antibody [SQab1716]
- 12 List** of SQab clone Rabbit mAbs
 - A to Z
 - Tag

SQab clone

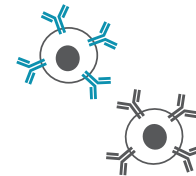
Recombinant Rabbit mAbs

SQab clones, arigo's signature, are named after the abbreviation of "Squirrel", the mascot of **arigo** Biolaboratories Corp. SQab clone recombinant rabbit monoclonal antibodies are developed by proprietary technology and validated by extensive process that allow confidence in **specificity**, **sensitivity**, and **consistency**.

Immunization



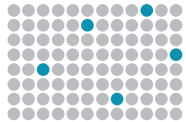
Efficient B cell isolation



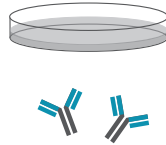
Technology

arigo has expertise in antibody production including the challenging recombinant rabbit monoclonal antibody generation.

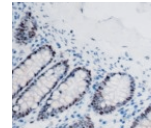
High-throughput screening



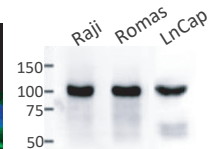
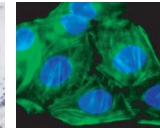
Single B cell cloning
Expert recombination technology



Optimized mammalian expression technology



Extensive validation process



Advantages of SQab clone Rabbit mAbs

In comparison with mouse hybridoma technology, arigo's proprietary recombinant antibody technology based on our unparalleled expertise produces the recombinant rabbit mAbs with better specificity and sensitivity. Moreover, our extensive validation processes ensure only the quality antibodies are offered.

	Specificity	Sensitivity	Consistency	IHC
SQab clone Recombinant Rabbit mAb	High	High Affinity 10^{-12} K _D (M)	Always consistent	Excellent for all targets
Mouse mAb	Medium/High	Medium Affinity 10^{-9} K _D (M)	Loss of sensitivity due to genetic drift	Weaker signal on human samples Higher background on mouse samples
Rabbit pAb	Variable	Variable	Frequent lot-to-lot variations	High background risk

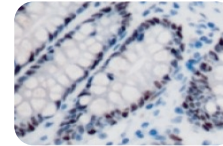
Why SQab clones

Better than Mouse mAbs

MSH6 antibodies

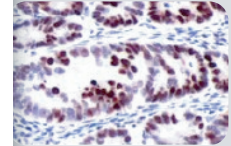
SQab1720 clone
(ARG66198)

1:500



Competitor's
mouse mAb

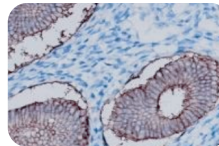
1:100



EpCAM antibodies

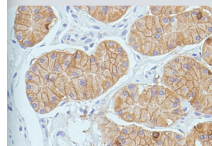
SQab1883 clone
(ARG66335)

1:3,200



Competitor's
mouse mAb

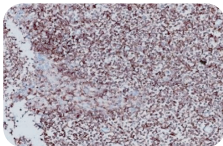
1:100



CD45 antibodies

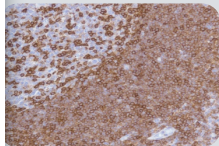
SQab1881 clone
(ARG66333)

1:800



Competitor's
mouse mAb

1:100



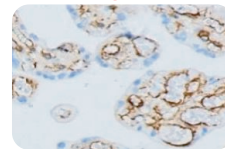
Why SQab clones

Better than other Rabbit mAbs

alpha-SMA antibodies

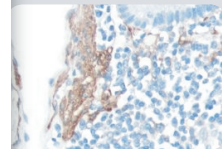
SQab18108 clone
(ARG66381)

1:2,000



Competitor's
rabbit mAb

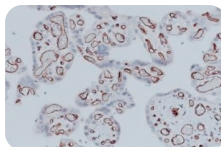
1:200



CD31 antibodies

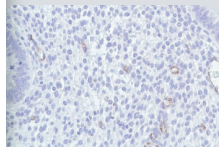
SQab18116 clone
(ARG66342)

1:3,200



Competitor's
rabbit mAb

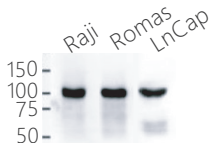
1:50



CD10 antibodies

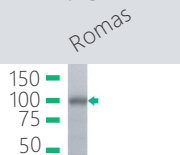
SQab1873 clone
(ARG66325)

1:2,000

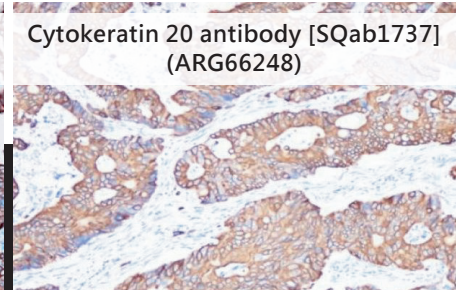
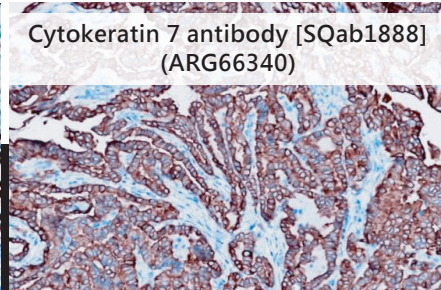


Competitor's
rabbit mAb

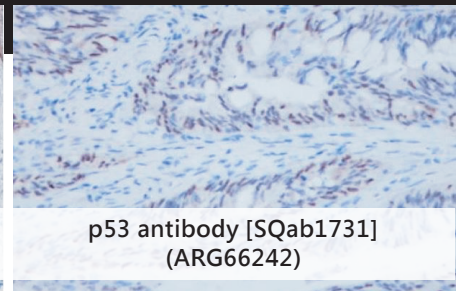
1:25



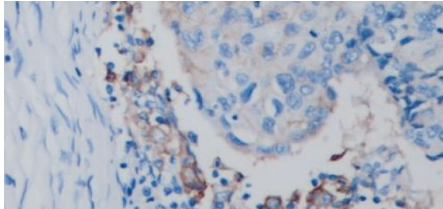
Featured SQab clone Rabbit mAbs



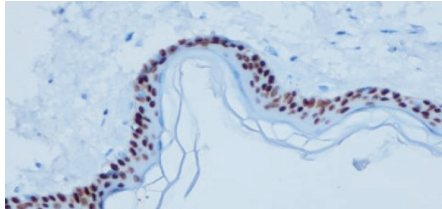
General Cancer Pathology



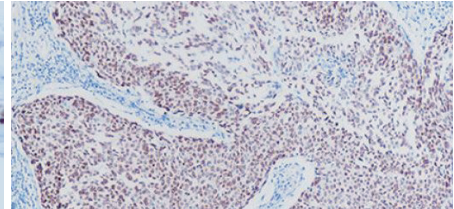
Lung Cancer Pathology



PD-L1 antibody [SQab1716]
(ARG65862)

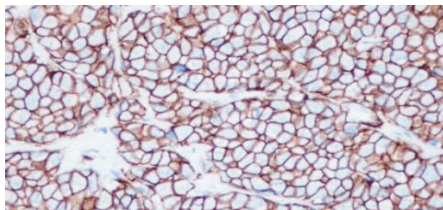


p40 antibody [SQab1740]
(ARG66251)

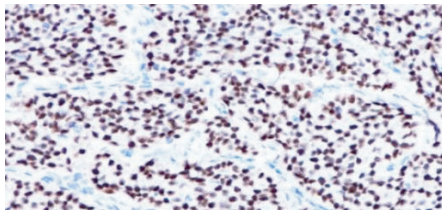


p63 antibody [SQab1893]
(ARG66343)

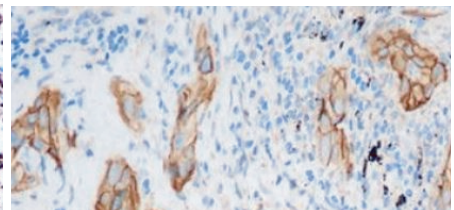
Breast Cancer Pathology



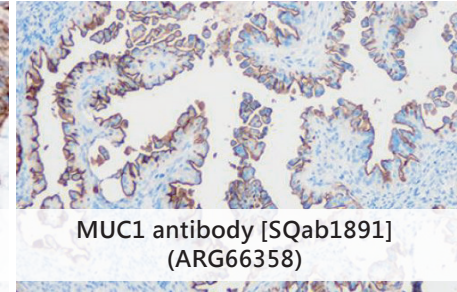
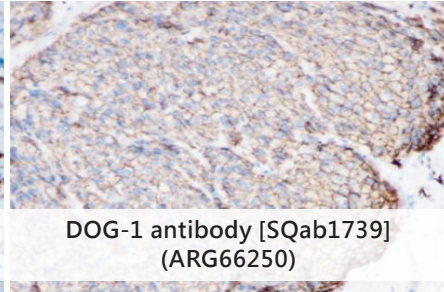
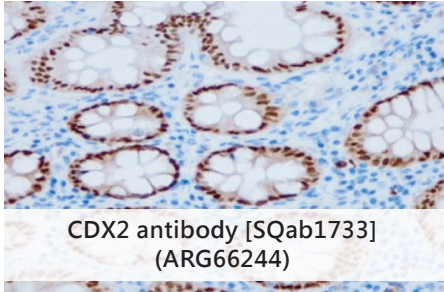
HER2 antibody [SQab1890]
(ARG66357)



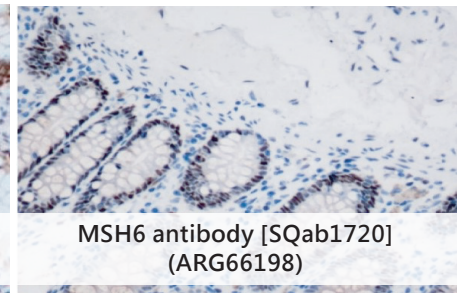
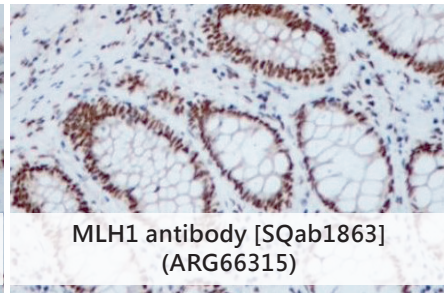
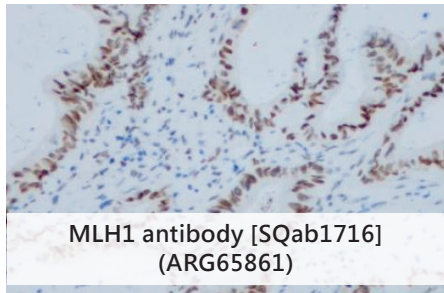
ER alpha antibody [SQab1889]
(ARG66356)

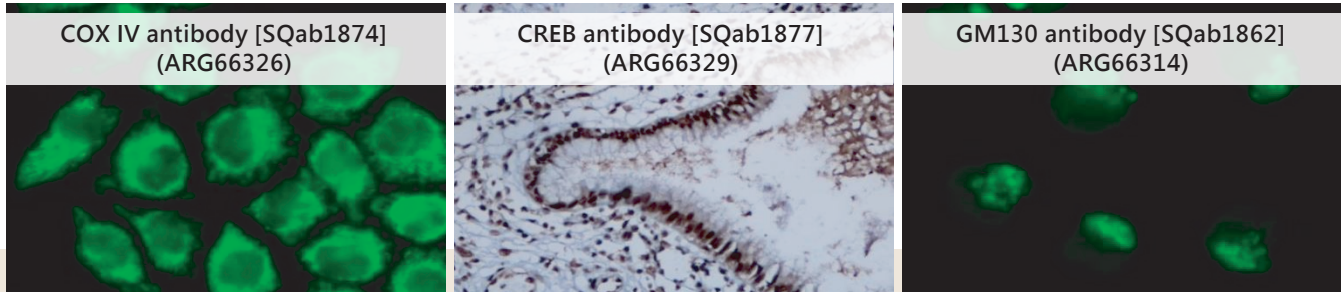


EGFR antibody [SQab1726]
(ARG66204)



Microsatellite instability (MSI)

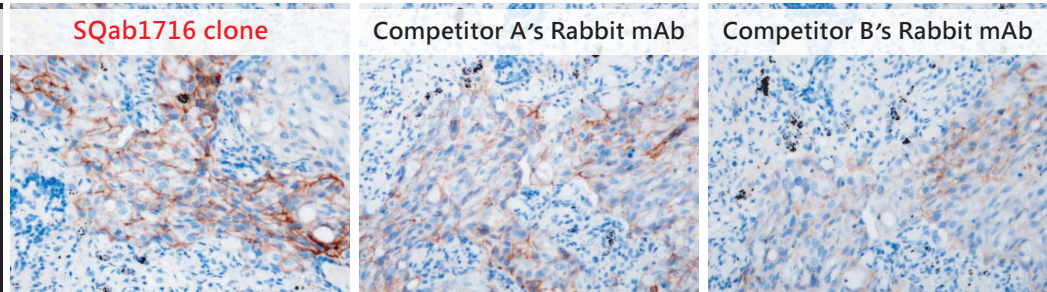




Cell Biology



Better than competitors' antibodies on IHC



PD-L1 antibody [SQab1716] (ARG65862)

FACS	IP	ICC/IF	Multiple applications
			FACS, ICC/IF, IHC-P, IP

List of SQab clone Rabbit mAbs

A
|
C

Product	Reactivity	Application	Cat. No.
ACPP antibody [SQab1871]	Hu	FACS, ICC/IF, IHC-P	ARG66323
Actin antibody [SQab18109]	Hu, Ms, Rat, Mk, Bo, Dog, Pig, Zfsh	IHC-P, WB	ARG66382
AR antibody [SQab1729]	Hu, Ms, Rat	IHC-P, WB	ARG66207
Bax antibody [SQab1736]	Hu, Ms, Rat	FACS, IHC-P, IP, WB	ARG66247
Caspase 3 antibody [SQab1876]	Hu	FACS, ICC/IF, IP, WB	ARG66328
CD1a antibody [SQab1894]	Hu	IHC-P	ARG66344
CD3 antibody [SQab1713]	Hu	FACS, ICC/IF, IHC-P, IP, WB	ARG65859
CD3e antibody [SQab1860]	Hu	FACS, IHC-P	ARG66341
CD4 antibody [SQab1714]	Hu	FACS, IHC-P, IP, WB	ARG65860
CD10 antibody [SQab1873]	Hu, Rat	FACS, IHC-P, WB	ARG66325
CD10 antibody [SQab18105]	Hu	IHC-P	ARG66355
CD19 antibody [SQab1869]	Hu	FACS, ICC/IF, IHC-P, IP, WB	ARG66321
CD20 antibody [SQab1719]	Hu	FACS, ICC/IF, IHC-P, IP	ARG66197
CD21 antibody [SQab1728]	Hu	FACS, IHC-P	ARG66206
CD23 antibody [SQab1898]	Hu	IHC-P	ARG66348
CD30 antibody [SQab1723]	Hu	IHC-P	ARG66201
CD31 antibody [SQab18116]	Hu	FACS, IHC-P, IP, WB	ARG66342
CD34 antibody [SQab1870]	Hu	FACS, IHC-P	ARG66322

Product	Reactivity	Application	Cat. No.
CD45 antibody [SQab1881]	Hu	FACS, IHC-P, WB	ARG66333
CD68 antibody [SQab1742]	Hu	FACS, IHC-P	ARG66253
CD79a antibody [SQab1743]	Hu	FACS, IHC-P, WB	ARG66254
CD99 antibody [SQab1725]	Hu	IHC-P, WB	ARG66203
CD117 antibody [SQab18111]	Hu	FACS	ARG66384
CDK4 antibody [SQab1864]	Hu	FACS, ICC/IF, IHC-P, IP, WB	ARG66316
CDK4 antibody [SQab1865]	Hu, Ms, Mk, Bo, Dog, Pig	WB	ARG66317
CDX2 antibody [SQab1733]	Hu	IHC-P	ARG66244
COX2 antibody [SQab18107]	Hu, Ms	FACS, ICC/IF, WB	ARG66380
COX4 antibody [SQab1874]	Hu, Ms, Rat, Mk, Bo, Ch, Dog, Pig	FACS, ICC/IF, IHC-P, IP, WB	ARG66326
CREB antibody [SQab1877]	Hu, Ms, Rat, Bo	FACS, ICC/IF, IHC-P, IP, WB	ARG66329
Acidic Cytokeratins antibody [SQab18100]	Hu	IHC-P	ARG66350
Basic Cytokeratins antibody [SQab1885]	Hu	FACS, IHC-P, WB	ARG66337
Cytokeratin 5 antibody [SQab18106]	Hu	IHC-P, WB	ARG66379
Cytokeratin 6 antibody [SQab18113]	Hu, Ms, Rat	IHC-P, IP, WB	ARG66386
Cytokeratin 6 antibody [SQab18112]	Hu	ICC/IF	ARG66385
Cytokeratin 7 antibody [SQab1888]	Hu	FACS, ICC/IF, IHC-P, IP, WB	ARG66340
Cytokeratin 8 antibody [SQab1718]	Hu	IHC-P, WB	ARG66196
Cytokeratin 10 antibody [SQab1884]	Hu	FACS, IHC-P	ARG66336

Product	Reactivity	Application	Cat. No.
Cytokeratin 10 antibody [SQab18104]	Hu	IHC-P	ARG66354
Cytokeratin 14 antibody [SQab18101]	Hu	IHC-P	ARG66351
Cytokeratin 18 antibody [SQab1882]	Hu, Rat	FACS, ICC/IF, IHC-P, IP, WB	ARG66334
Cytokeratin 18 antibody [SQab18102]	Hu	IHC-P	ARG66352
Cytokeratin 19 antibody [SQab1872]	Hu	FACS, ICC/IF, IHC-P, IP, WB	ARG66324
Cytokeratin 20 antibody [SQab1737]	Hu	FACS, ICC/IF, IHC-P, IP, WB	ARG66248
Desmin antibody [SQab1722]	Hu, Ms, Rat	IHC-P, WB	ARG66200
DOG-1 antibody [SQab1739]	Hu	IHC-P	ARG66250
E-Cadherin antibody [SQab1717]	Hu	IHC-P, WB	ARG66195
EGFR antibody [SQab1726]	Hu, Ms, Rat	FACS, ICC/IF, IHC-P, IP, WB	ARG66204
EpCAM antibody [SQab1883]	Hu	FACS, IHC-P, IP, WB	ARG66335
EpCAM antibody [SQab18103]	Hu	IHC-P	ARG66353
ER alpha antibody [SQab1889]	Hu	ICC/IF, IHC-P	ARG66356
ERK1 antibody [SQab1866]	Hu, Ms, Rat	FACS, ICC/IF, IHC-P, IP, WB	ARG66318
ERK2 antibody [SQab1744]	Hu, Ms, Rat	FACS, IHC-P, IP, WB	ARG66255
GAPDH antibody [SQab1878]	Hu, Ms, Rat, Mk, Bo, Ch, Pig, Xi, Zfsh	FACS, ICC/IF, IHC-P, IP, WB	ARG66330
GM130 antibody [SQab1862]	Hu	FACS, ICC/IF, IHC-P, WB	ARG66314
Granzyme B antibody [SQab1712]	Hu	IHC-P	ARG65858
HDAC1 antibody [SQab1867]	Hu, Bo, Mk	FACS, ICC/IF, IHC-P, WB	ARG66319

Product	Reactivity	Application	Cat. No.
HER2 antibody [SQab1890]	Hu	IHC-P	ARG66357
Histone H3 antibody [SQab18110]	Hu, Ms, Rat, Mk, Bo, Dog, Zfsh	FACS, IHC-P, IP, WB	ARG66383
IKK gamma antibody [SQab1868]	Hu, Ms, Rat	FACS, IHC-P, IP, WB	ARG66320
Ki-67 antibody [SQab1897]	Hu	IHC-P	ARG66347
MGMT antibody [SQab1861]	Hu	FACS, IHC-P, IP, WB	ARG66313
MLH1 antibody [SQab1716]	Hu	FACS, ICC/IF, IHC-P, WB	ARG65861
MLH1 antibody [SQab1863]	Hu	FACS, ICC/IF, IHC-P	ARG66315
MSH6 antibody [SQab1720]	Hu, Rat	FACS, ICC/IF, IHC-P, IP, WB	ARG66198
MUC1 antibody [SQab1891]	Hu	IHC-P	ARG66358
MUC16 antibody [SQab1724]	Hu	FACS, IHC-P, WB	ARG66202
Na ⁺ /K ⁺ ATPase antibody [SQab1875]	Hu, Ms, Rat	FACS, IHC-P, IP, WB	ARG66327
p21 antibody [SQab18118]	Hu	FACS, ICC/IF, IHC-P	ARG66390
p40 antibody [SQab1740]	Hu	IHC-P	ARG66251
p53 antibody [SQab1731]	Hu	IHC-P, WB	ARG66242
p63 antibody [SQab1893]	Hu	IHC-P	ARG66343
PAX2 antibody [SQab1896]	Hu	IHC-P	ARG66346
PCNA antibody [SQab18115]	Hu, Ms, Rat, Mk, Bo, Ch, Dog	FACS, IP, WB	ARG66388
PD-1 antibody [SQab1732]	Hu	FACS, ICC/IF, IHC-P, IP	ARG66243
PD-L1 antibody [SQab1716]	Hu	FACS, ICC/IF, IHC-P, IP	ARG65862

Product	Reactivity	Application	Cat. No.
Pmel 17 antibody [SQab1738]	Hu	IHC-P	ARG66249
PSA antibody [SQab1895]	Hu	IHC-P	ARG66345
PSAP antibody [SQab1899]	Hu	IHC-P	ARG66349
S100P antibody [SQab1730]	Hu	FACS, ICC/IF, IHC-P	ARG66241
alpha-SMA antibody [SQab1735]	Hu, Ms, Rat	FACS, ICC/IF, IHC-P, IP, WB	ARG66246
alpha-SMA antibody [SQab18108]	Hu, Ms, Rat, Mk, Bo, Dog, Pig, Zfsh	FACS, ICC/IF, IHC-P, WB	ARG66381
SOX10 antibody [SQab1734]	Hu	FACS, ICC/IF, IHC-P, IP, WB	ARG66245
Syndecan-1 antibody [SQab1741]	Hu	FACS, IHC-P	ARG66252
Topoisomerase II antibody [SQab1727]	Hu, Ms	IHC-P, WB	ARG66205
Vimentin antibody [SQab1721]	Hu, Ms	FACS, ICC/IF, IHC-P, IP, WB	ARG66199

Tag

Product	Application	Cat. No.
6X His tag antibody [SQab1879]	FACS, ICC/IF, IP, WB	ARG66331
DDDDK tag antibody [SQab1880]	FACS, ICC/IF, IP, WB	ARG66332
GST tag antibody [SQab1886]	FACS, ICC/IF, IP, WB	ARG66338
HA tag antibody [SQab18117]	FACS, ICC/IF, IP, WB	ARG66389
HRP antibody [SQab1887]	FACS, ICC/IF, WB	ARG66339
V5 tag antibody [SQab18114]	FACS, ICC/IF, IP, WB	ARG66387



Phone : +886 (3) 562 1738 / E-mail : info@arigobio.com

www.arigobio.com