

---

**The story  
behind our squirrel**

p.1

---

**Why choose  
arigo's ELISA Kits?**

p.2

---

**ELISA  
Troubleshooting Tips**

p.15

---

**Quality  
ELISA kits list**

p.4 - 50

---

# ELISA KITS



# The Story Behind Our Squirrel



www.arigobio.com



arigo. biolaboratories

## Excellence :

As smart as squirrels, arigo provides smart solutions allowing researchers to accelerate experiments with convincing results. Unlike many other antibody companies, our scientists are dedicated to developing the most comprehensive collection of Antibody Duos and Antibody Panels. Pathway Duos identifies protein-protein relationships, PTM Duos detect total and modified form of target proteins, Control Duos and ELISA Duos accelerate experimental procedures. Antibody Panels consist of several antibodies grouped together according to their scientific relevance.

## Responsiveness :

The same as squirrels responsive to the environment, scientists in arigo thoroughly analyze the research frontier and cooperate with scientists worldwide. We bring out cutting edge research solutions in the timeliest manner, to meet the needs of unlimited possibilities in the emerging life science world.

## Our Brand Story :

Have you noticed a squirrel hidden in the logo of arigo? Arigo Biolaboratories made itself synonymous with Smart Solutions using "squirrel" as a symbol.

## Quality :

Arigo scientists precisely screen our products and validate them with strict control. As a result we are proud to offer customers quality products that generate the most valuable results.

## Balance :

To pursue a balance in laboratory life, our staff builds out many interesting ideas, to let researchers have fun while performing experiments in the labs. Our cute squirrel will always be with you to brighten your day.

## Best for the future :

Just as squirrels save the best nuts for the future, arigo is dedicated to providing our customers with the most up to date, reliable product range to get quality results and papers published. We know that your research determines the future of mankind.

# Why choose arigo's ELISA Kits?



www.arigobio.com

## Quality Antibody Pairs



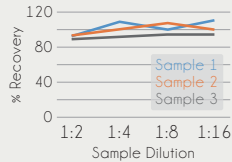
arigo carefully selects antibody pairs that give the best performance in ELISA assay.

## Excellent Reproducibility

**CV < 10 %**

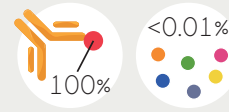
We ensure that the CV values for intra- and inter-assay precision to fall below 10%.

## Highly Specific



Linearity assays are performed to ensure minimal interference in various samples.

## Minimal Cross-Reactivity



Substances of similar structure are tested for cross-reactivity to ensure specificity of assays.

## PhD Technical Support



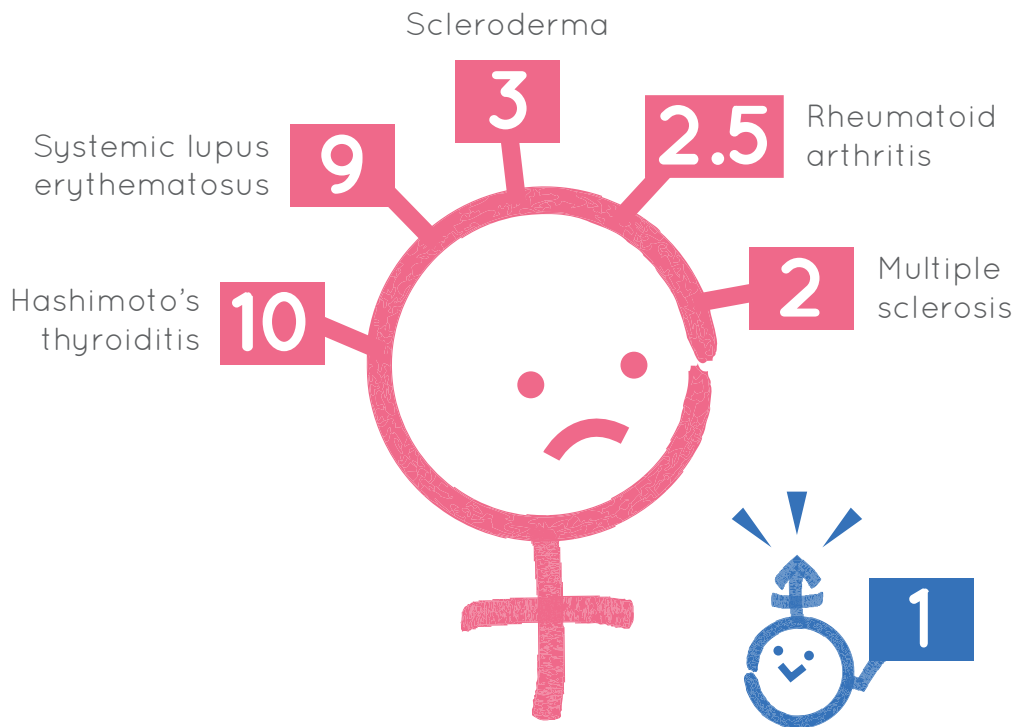
Our PhD technical support team is always here to help you solve your ELISA troubles.

### Human IFN-alpha ELISA Kit

	arigo	Company R	Company B	Company C
<b>Outstanding Performance</b>				
Sensitivity	6pg / ml	12.5pg / ml	1400pg / ml	600pg / ml
Assay Range	10.94-700pg / ml	156-5000pg / ml	3.15-200ng / ml	0.6ng / ml-400ng / ml
Samples	Serum, plasma, cell culture supernatant	not reported	Serum, plasma, cell culture supernatant	Serum, plasma, cell culture supernatant

Our ELISA kits match or exceed the performance of products from renowned suppliers.

About Us	01
Allergy & Autoimmunity	04
Hormones & Growth Factors	09
ELISA Troubleshooting Tips	15
Cancer & Tumor Markers	17
Cardiovascular & Hematology	20
Cytokines & Chemokines	25
Stem Cell & Developmental Biology	31
Food Analysis	33
Immunology	36
Infectious Diseases	39
Metabolism	44
Neuroscience	46
Veterinary Diagnostic	48



arigo Cat No.	Target	Tested Reactivity	Sensitivity	Range	Sample Type
ARG80351	ACPA	H	1 U/ml	20 - 1.000 U/ml	Serum, Plasma
ARG80352	<b>a</b> Fodrin Ab IgG / IgA	H	1 U/ml	6.3 - 100 U/ml	Serum, Plasma
ARG80353	AMA-M2 Ab	H	1 IU/ml	12.5 - 200 IU/ml	Serum, Plasma
ARG80354	ANA Hep Screen	H	diagn. 98.9 %	Cut-off	Serum, Plasma
ARG80355	ANA Profile	H	diagn. 95.5 %	Cut-off	Serum, Plasma
ARG80356	ANA Screen	H	diagn. 96.4 %	Cut-off	Serum, Plasma
ARG80357	ANCA Profile	H	diagn. 90.2 %	Cut-off	Serum, Plasma
ARG80358	ANCA Screen	H	diagn. 95.1 %	Cut-off	Serum, Plasma
ARG80359	ANCA-C (PR3)	H	0.5 U/ml	5 - 100 U/ml	Serum, Plasma
ARG80360	ANCA-C (PR3) hs	H	0.5 U/ml	10 - 200 U/ml	Serum, Plasma
ARG80361	ANCA-P (MPO)	H	0.5 U/ml	5 - 100 U/ml	Serum, Plasma
ARG80362	Annexin V Ab IgG / IgM	H	1 U/ml	6.3 - 100 U/ml	Serum, Plasma
ARG80363	Anti-ASGPR IgG	H	0.3 BI	Cut-off	Serum, Plasma
ARG80364	Anti-LC1	H	1 U/ml	3 - 300 U/ml	Serum, Plasma
ARG80365	Anti-LKM1	H	1.0 U/ml	3 - 300 U/ml	Serum, Plasma
ARG80366	Anti-Ovarian Ab	H	n.d	6 - 100 U/ml	Serum
ARG80368	Anti-Spermatozoa Ab	H	25 U/ml	31 - 250 U/ml	Seminal Plasma
ARG80369	Anti-Spermatozoa Ab	H	25 U/ml	31 - 250 U/ml	Serum
ARG80367	Anti-Spermatozoa Ab Ig	H	Cut-off	Cut-off	Serum
ARG80370	ASCA IgG / IgA	H	0.5 U/ml	6.3 - 100 U/ml	Serum, Plasma
ARG80418	<b>β</b> 2-Glycoprotein I Ab IgA	H	0.5 U/ml	6.3 - 100 U/ml	Serum, Plasma
ARG80419	<b>β</b> 2-Glycoprotein I Ab IgG / IgM	H	0.5 U/ml	6.3 - 100 U/ml	Serum, Plasma
ARG80420	<b>β</b> 2-Glycoprotein I Screen	H	0.5 U/ml	3.3 - 90 U/ml	Serum, Plasma
ARG80371	BPI Ab	H	0.5 U/ml	6.3 - 100 U/ml	Serum, Plasma
ARG80372	C1q Ab	H	0.5 U/ml	6.3 - 100 U/ml	Serum, Plasma

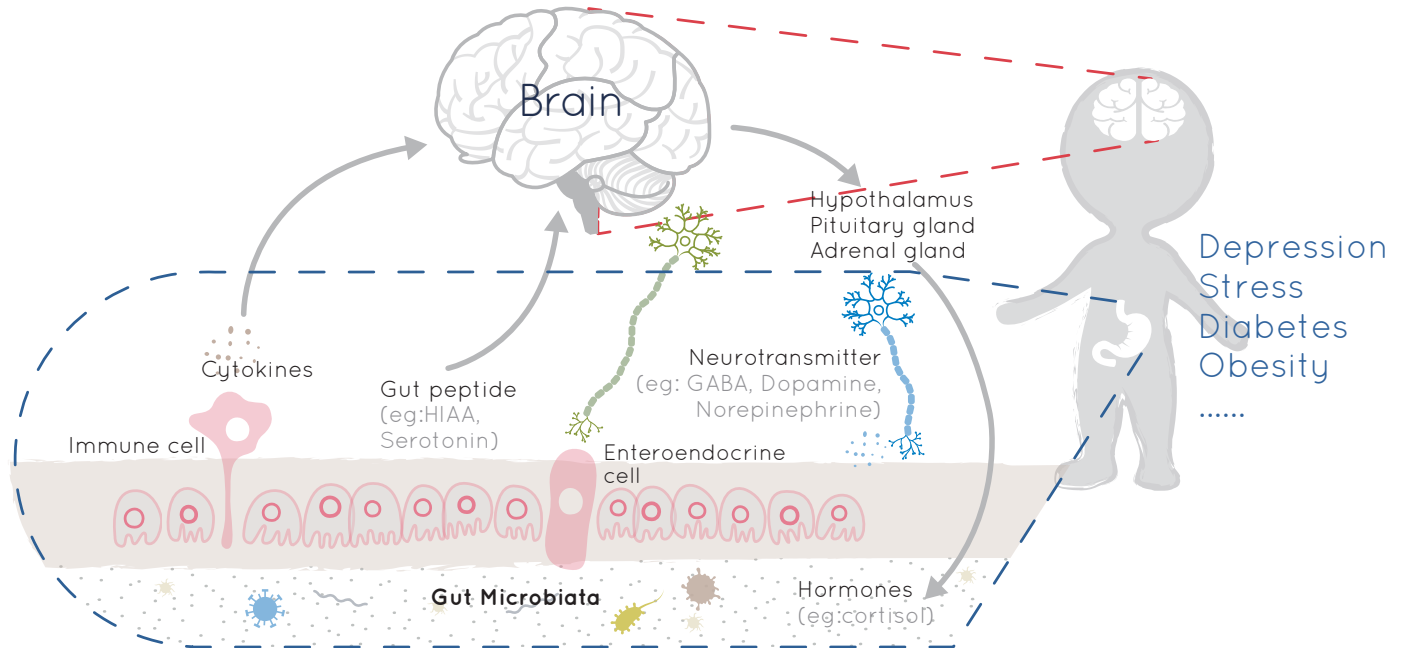
arigo Cat No.	Target	Tested Reactivity	Sensitivity	Range	Sample Type
ARG80373	Cardiolipin Ab IgA	H	1.0 API-U/ml	7.5 - 120 APL-U/ml	Serum, Plasma
ARG80374	Cardiolipin Ab IgG / IgM	H	0.5-1 MPI U/ml	7.5 - 120 U/ml	Serum, Plasma
ARG80375	Cardiolipin Screen	H	1 U/ml	3.3 - 90 U/ml	Serum, Plasma
ARG80376	Cathepsin G Ab	H	0.5 U/ml	6.3 - 100 U/ml	Serum, Plasma
ARG80377	CCP Ab	H	1 U/ml	10 - 500 U/ml	Serum, Plasma
ARG80378	Centromere B Ab	H	1 U/ml	10 - 300 U/ml	Serum, Plasma
ARG81022	DGP / Deamidated gliadin proteins IgA Ab	H	1 U/ml		Serum, Plasma
ARG81023	DGP / Deamidated gliadin proteins IgG Ab	H	1 U/ml		Serum, Plasma
ARG80381	ds-DNA Ab IgA	H	1 U/ml	12.5 - 200 U/ml	Serum, Plasma
ARG80382	ds-DNA Ab IgG	H	1.0 IU/ml	12.5 - 200 IU/ml	Serum, Plasma
ARG80383	ds-DNA Ab IgM	H	1 U/ml	12.5 - 200 U/ml	Serum, Plasma
ARG80384	ds-DNA Screen	H	1 U/ml	12.5 - 200 U/ml	Serum, Plasma
ARG80385	Elastase Ab	H	0.5 U/ml	6.3 - 100 U/ml	Serum, Plasma
ARG80386	ENA Combi	H	1 U/ml	12.5 - 100 U/ml	Serum, Plasma
ARG80387	ENA Screen	H	diagn. 92.7 %	Cut-off	Serum, Plasma
ARG80388	ENA4 Profile	H	diagn. 84.9 %	Cut-off	Serum, Plasma
ARG80389	ENA6 Profile	H	diagn. 86.4 %	Cut-off	Serum, Plasma
ARG80780	GAD65 autoAb	H	0.57 U/ml	1 - 30 µg/ml	Serum
ARG80390	GBM Ab	H	1 U/ml	20 - 200 U/ml	Serum, Plasma
ARG80391	Gliadin IgA	H	1.05 U/ml	1 - 150 U/ml	Serum, Plasma
ARG80392	Gliadin IgG	H	1.11 U/ml	1 - 150 U/ml	Serum, Plasma
ARG80393	Gliadin IgM	H	0.94 U/ml	1 - 300 U/ml	Serum, Plasma
ARG80394	Histone Ab	H	1 U/ml	12.5 - 200 U/ml	Serum, Plasma
ARG80781	IA2 autoAb	H	1.25 U/ml	10 - 200 ng/ml	Serum
ARG80983	ICA / Islet Cell Autoantibodies	H		12.5 - 150 %	Serum

arigo Cat No.	Target	Tested Reactivity	Sensitivity	Range	Sample Type
ARG80140	IgE	H	0.2 ng/ml	0.469-30 ng/ml	Serum, Plasma, Cell culture supernatants
ARG80216	IgE	Ms	0.8 ng/ml	1.56-100 ng/ml	Serum, Plasma, Cell culture supernatants
ARG80248	IgE	Rat	4 ng/ml	7.8-500 ng/ml	Serum, Plasma, Cell culture supernatants
ARG80774	IgE (total)	H	0.8 IU/ml	12.7 - 966 pg/ml	Serum, Plasma
ARG81101	Immunoglobulin E	H		1 - 500 ng/ml	Serum, Plasma, Hybridoma cell supernatants, Ascites
ARG80395	Insulin Ab	H	0.5 U/ml	6.3 - 100 U/ml	Serum, Plasma
ARG80396	Intrinsic Factor Ab	H	0.5 U/ml	6.3 - 100 U/ml	Serum, Plasma
ARG80397	Jo1 Ab	H	1 U/ml	12.5 - 200 U/ml	Serum, Plasma
ARG80398	Lactoferrin Ab	H	0.5 U/ml	6.3 - 100 U/ml	Serum, Plasma
ARG80399	Lysozyme Ab	H	0.5 U/ml	6.3 - 100 U/ml	Serum, Plasma
ARG80400	Nucleosome Ab	H	0.5 U/ml	12.5 - 200 U/ml	Serum, Plasma
ARG80401	Parietal Cell Ab	H	0.5 U/ml	6.3 - 100 U/ml	Serum, Plasma
ARG80402	Phosphatidic Acid Ab IgG / IgM	H	0.5 U/ml	6.3 - 100 U/ml	Serum, Plasma
ARG80403	Phosphatidyl Inositol Ab IgG / IgM	H	0.5 U/ml	6.3 - 100 U/ml	Serum, Plasma
ARG80404	Phosphatidyl Serine Ab	H	0.5 U/ml	6.3 - 100 U/ml	Serum, Plasma
ARG80405	Phospholipid Screen IgG / IgM	H	0.5 U/ml	6.3 - 100 U/ml	Serum, Plasma
ARG80406	Prothrombin Ab IgA	H	1 U/ml	6.3 - 100 U/ml	Serum, Plasma
ARG80407	Prothrombin Ab IgG / IgM	H	1 U/ml	6.3 - 100 U/ml	Serum, Plasma
ARG80408	Prothrombin Screen	H	1 U/ml	6.3 - 100 U/ml	Serum, Plasma
ARG80409	Rheumatoid Factor IgA	H	1.0 U/ml	15 - 500 U/ml	Serum, Plasma
ARG80410	Rheumatoid Factor IgG	H	1.0 U/ml	15 - 500 U/ml	Serum, Plasma
ARG80411	Rheumatoid Factor IgM	H	1.0 IU/ml	15 - 500 IU/ml	Serum, Plasma
ARG80412	Rheumatoid Factor Screen	H	1.0 U/ml	15 - 500 U/ml	Serum, Plasma
ARG80413	Rib-P Ab	H	1 U/ml	12.5 - 200 U/ml	Serum, Plasma
ARG80415	RNP / Sm Ab	H	1 U/ml	12.5 - 200 U/ml	Serum, Plasma



arigo Cat No.	Target	Tested Reactivity	Sensitivity	Range	Sample Type
ARG80414	RNP 70 Ab	H	1 U/ml	12.5 - 200 U/ml	Serum, Plasma
ARG80416	Scl70 Ab	H	1 U/ml	12.5 - 200 U/ml	Serum, Plasma
ARG80417	Sm Ab	H	1 U/ml	12.5 - 200 U/ml	Serum, Plasma
ARG80421	SS-A 52 Ab	H	0.5 U/ml	12.5 - 200 U/ml	Serum, Plasma
ARG80422	SS-A 60 Ab	H	0.5 U/ml	12.5 - 200 U/ml	Serum, Plasma
ARG80423	SS-A Ab	H	1 U/ml	12.5 - 200 U/ml	Serum, Plasma
ARG80424	SS-B Ab	H	1 U/ml	12.5 - 200 U/ml	Serum, Plasma
ARG80425	ss-DNA Ab	H	1 U/ml	12.5 - 200 U/ml	Serum, Plasma
ARG80429	Thrombosis Profile	H	1 U/ml	6.3 - 100 U/ml	Serum, Plasma
ARG80426	Tissue Transglutaminase Ab IgA	H	1 U/ml	5 - 200 U/ml	Serum, Plasma
ARG80427	Tissue Transglutaminase Ab IgG	H	1 U/ml	5 - 200 U/ml	Serum, Plasma
ARG80428	Tissue Transglutaminase Ab Screen	H	1 U/ml	5 - 200 U/ml	Serum, Plasma
ARG80895	TSH-R Ab	H	0.55 U/l	0-100 ng/ml	Serum
ARG81021	Zonulin / Haptoglobin	H	0.143 ng/ml		Serum

# Hormones & Growth Factors



arigo Cat No.	Target	Tested Reactivity	Sensitivity	Range	Sample Type
ARG80856	17-OH Progesterone (free)	H	3 pg/ml	1 - 100 pg/ml	Saliva
ARG80633	17-OH-Progesterone	H	0.037 ng/ml	5 - 240 nmol/l	Serum, Plasma
ARG80431	2 CAT (Adrenaline+Noradrenaline)	H	AD: 0.3 ng/ml; NAD: 1.5 ng/ml	AD: 1 - 200 ng/ml; NAD: 5 - 1000 ng/ml	Urine, Plasma
ARG80433	2 CAT (Adrenaline+Noradrenaline)	H	AD: 5.2 pg/ml; NAD: 20 pg/ml	AD: 20 - 3200 pg/ml; NAD: 80 - 12800 pg/ml	Plasma
ARG80434	2 CAT Research (Adrenaline+Noradrenaline)	H	AD: 0.25 ng/ml; NAD: 0.1 ng/ml	AD: 0.5 - 80 ng/ml; NAD: 0.2 - 32 ng/ml	Biological fluids
ARG80435	2 CAT Research (Noradrenaline+Dopamine)	H	NAD: 0.1 ng/ml; DOP: 0.25 ng/ml	NAD: 0.2 - 32 ng/ml; DOP: 0.5 - 80 ng/ml	Biological fluids
ARG80775	25-OH Vitamin D		2.81 ng/ml	5 - 2,000 U/ml	Serum, Plasma
ARG80436	2-MET (Metanephrine+Normetanephrine)	H	MT: 17 pg/ml; NMT: 23 pg/ml	MT: 36 - 3600 pg/ml; NMT: 48 - 4800 pg/ml	Plasma
ARG80437	3 CAT (Adrenaline+Noradrenaline+Dopamine)	H	AD: 0.8 ng/ml; NAD: 1.7 ng/ml; DOP: 2.5 ng/ml	AD: 1 - 200 ng/ml; NAD: 5 - 1000 ng/ml; DOP: 10 - 2000 ng/ml	Urine, Plasma
ARG80440	3 CAT Research (Adrenaline + Noradrenaline + Dopamine)	H, Ms	AD/DOP: 0.25 ng/ml; NAD: 0.1 ng/ml	AD/DOP: 0.5 - 80 ng/ml; NAD: 0.2 - 32 ng/ml	Biological fluids
ARG80832	5 $\alpha$ -Androstane-3 $\alpha$ , 17 $\beta$ -diol-Glucuronide Direct	H	0.1 ng/ml	25 - 2,500 pg/ml	Serum
ARG80441	5-HIAA	H	0.17 mg/l	0.5 - 50 mg/l	Urine
ARG80857	8OHdG	Other	0.5 ng/ml	2.5 - 4,000 pg/ml	Saliva
ARG80625	ACTH	H	0.22 pg/ml	20 - 1000 pg/ml	Plasma
ARG80823	Adiponectin	H	< 0.6 ng/ml	3.2 - 200 pg/ml	Serum, Plasma, Urine, breast Milk, Cell culture supernatants
ARG80442	Adrenaline	H	0.8 ng/ml	1 - 200 ng/ml	Urine, Plasma
ARG80445	Adrenaline Research	H	0.25 ng/ml	0.5 - 80 ng/ml	Biological fluids
ARG80627	Aldosterone	H	< 5.7 pg/ml	20 - 800 ng/ml	Serum, Plasma, Urine
ARG80900	$\alpha$ Melanocyte Stimulating Hormone ( $\alpha$ MSH)	H, Ms, Rat	0.16 ng/ml	7.8-500pg/ml	Blood, Plasm, Tissue, CSF extraction, Cell culture supernatant
ARG80834	Androstenedione	H	0.021 ng/ml	3 - 200 pg/ml	Serum, Plasma

arigo Cat No.	Target	Tested Reactivity	Sensitivity	Range	Sample Type
ARG80858	Androstenedione	H	5 pg/ml	10 - 300 pg/ml	Saliva
ARG81128	Atrial Natriuretic Peptide (ANP)	Rat	0.25 ng/ml		Serum, Plasma, Cell culture, Tissue extract
ARG80835	$\beta$ hCG	H	1 mIU/ml	2 - 200 ng/ml	Serum
ARG80776	Calcitonin	H	1.3 pg/ml	7.5 - 4,000 U/ml	Serum, Plasma
ARG80869	Calprotectin	H	5 ng/ml	100 - 5,000 pg/ml	Stool
ARG80972	Cholecystokinin 8, Octapeptide (non-Sulfated)	H, Ms, Rat	0.04 ng/ml	17.5 - 1750 ppb	Blood collection
ARG80249	CNTF	Rat	15 pg/ml	31.25-2000 pg/ml	Serum, Plasma, Cell culture supernatants
ARG80954	CNTF	H	0.07 ng/ml	6.3 - 100 U/ml	Blood, Tissue, CSF extraction
ARG80635	Corticosterone	H	< 1.63 nmol/l	3 - 300 ng/ml	Serum, Plasma
ARG80630	Cortisol	H	2.5 ng/ml	10 - 500 ng/ml	Serum, Plasma
ARG80632	Cortisol	H	2.95 ng/ml	0.1 - 25 ng/ml	Urine
ARG80859	Cortisol	All species	0.024 ng/ml	0.6 - 25 pg/ml	Saliva
ARG80870	CRP	H	1 $\mu$ g/ml	2 - 50 $\mu$ mol/l	Serum, Plasma
ARG80876	CRP (HS)	H	0.02 $\mu$ g/ml	4 - 128 pg/ml	Serum, Plasma
ARG80949	DHEA	Other	0.07 ng/ml	50-250nmol/l	Serum, Plasma
ARG81028	DHEA (free)	H	3.7 pg/ml		Saliva
ARG80837	DHEA sulfate form	H	0.002 $\mu$ g/ml	0.3 - 40 ng/ml	Serum, Plasma
ARG80838	Dihydrotestosterone / DHT	H	7.23 pg/ml	13 - 1000 ng/ml	Serum
ARG80447	Dopamine	H	2.5 ng/ml	10 - 2000 ng/ml	Urine, Plasma
ARG80450	Dopamine	H	0.25 ng/ml	0.5 - 80 ng/ml	Biological fluids
ARG80861	Estradiol	H	0.4 pg/ml	10 - 5,000 pg/ml	Saliva
ARG80950	Estradiol	H	6.2 pg/ml	Qualitative	Serum, Plasma
ARG80840	Estradiol (HS)	H	1.4 pg/ml	5 - 100 mIU/ml	Serum, Plasma
ARG80862	Estriol	H	1.4 pg/ml	2 - 400 $\mu$ g/ml	Saliva
ARG80842	Estriol (unconjugated)	H	0.02 ng/ml	1.25 - 20 mg/l	Serum

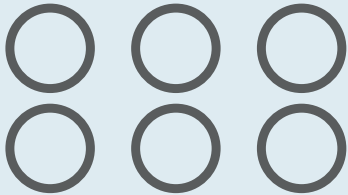
arigo Cat No.	Target	Tested Reactivity	Sensitivity	Range	Sample Type
ARG80841	Estriol (total)	H	0.05 ng/ml	5 - 1,000 mIU/ml	Serum, Plasma
ARG80843	Estrone	H	2.21 pg/ml	9 - 920 pg/ml	Serum, Plasma
ARG80863	Estrone	H	4.7 pg/ml	10 - 1,000 pg/ml	Saliva
ARG80785	Free $\beta$ hCG	H	0.2 ng/ml	0.2 - 6 ppm	Serum, Plasma
ARG80890	Free Thyroxine (Free T4)	H	0.05 ng/dl	1 - 40 U/I WHO	Serum
ARG80888	Free Triiodothyronine (fT3)	H	0.05 pg/ml	0.25 - 15 mIU/l	Serum
ARG80844	FSH	H	0.856 mIU/ml	11 - 977 pg/ml	Serum
ARG80451	GABA	H	49 ng/ml	75 - 7500 ng/ml	Serum, Plasma, Urine
ARG80953	GDNF	H	< 4 pg/ml	0.25 - 64 ng/ml	Serum, Plasma, Cell culture supernatants
ARG80942	Chrelin	H	4 ng/ml	Cut-Off	Serum, Plasma, Cell culture supernatants
ARG80872	Chrelin (active)	H	15 pg/ml	0.4 - 10 $\mu$ g/ml	Serum, Plasma
ARG80873	Chrelin (acylated) human	H	0.8 pg/ml	1.35 - 111 nmol/l	Plasma
ARG80874	Chrelin (total) human	H	50 pg/ml	15.6 - 1,000 pg/ml	Serum, Plasma
ARG80453	Glutamate	H	0.3 $\mu$ g/ml	0.6 - 60 $\mu$ g/ml	Urine, Plasma, Serum
ARG80845	hCG	H	< 5 mIU/ml	10 - 200 mIU/ml	Serum, Plasma
ARG80824	hGH	H	0.2 $\mu$ IU/ml	18.8 - 1,200 pg/ml	Serum, Plasma
ARG80455	Histamine	H	0.12 ng/ml	0.5 - 50 ng/ml	Urine, Plasma
ARG80457	Histamine	H	0.2 ng/ml	0.5 - 50 ng/ml	Urine, Cell culture supernatants, Whole blood
ARG80459	Histamine Research	Cat, Dog, Hrs, H, Ms, Rat	0.2 ng/ml	0.5 - 50 ng/ml	Biological fluids
ARG80875	Homocysteine / HCY	H	1 $\mu$ mol/l	0.2 - 60 ng/ml	Serum, Plasma
ARG81024	Homovanillic Acid / HVA	H	0.035 $\mu$ g/ml		Urine
ARG80904	Human Betacellulin / BTC	H	15 pg/ml	3.9 - 250 pg/ml	Serum, Plasma, Cell culture supernatants
ARG80224	IGF1	Ms	50 pg/ml	93.75-6000 pg/ml	Serum, Plasma, Cell culture supernatants
ARG80491	IGF1	H	9.75 ng/ml	10 - 600 ng/ml	Serum
ARG80495	IGF1	H	0.09 ng/ml	2 - 50 ng/ml	Serum, Plasma

arigo Cat No.	Target	Tested Reactivity	Sensitivity	Range	Sample Type
ARG80492	IGFBP1	H	0.02 ng/ml	0.1 - 8 ng/ml	Serum, Plasma
ARG80493	IGFBP2	H	0.2 ng/ml	2 - 80 ng/ml	Serum, Plasma, Saliva, CSF, Body fluids
ARG80494	IGFBP3	H	0.1 ng/ml	0.4 - 30 ng/ml	Serum, Plasma, Liquor
ARG80496	IGF-II	H	0.02 ng/ml	0.45 - 9.0 ng/ml	Serum, Plasma, Urine, Saliva, Liquor, CSF
ARG80779	Intact Parathyroid Hormone	H	1.72 pg/ml	2.6 - 66 pmol/l	Serum
ARG80126	Leptin	H	8 pg/ml	15.6-1000 pg/ml	Serum, Plasma, Cell culture supernatants
ARG80831	Leptin	H	0.2 ng/ml	0.03 - 10 µg/ml	Serum, Plasma, Urine, Saliva
ARG80850	LH	H	1.27 mIU/ml	0.2 - 16 ng/ml	Serum
ARG80913	LH-RH / Gn-RH	H, Ms, P, Rat	0.05 ng/ml	25 - 2000 pg/ml	Blood, Plasm, Tissue, CSF extraction
ARG81027	Lipoprotein (α) / Lp (α)	H	< 5 mg/dl		Serum, Plasma
ARG80461	Melatonin	H	1.6 pg/ml	3.5 - 337 pg/ml	Serum, Plasma
ARG80864	Melatonin	H	0.5 pg/ml	0.1 - 10 ng/ml	Saliva
ARG80465	Metanephrine	H	17 pg/ml	36 - 3600 pg/ml	Plasma
ARG80467	Metanephrine	H	13 ng/ml	20 - 2000 ng/ml	Urine
ARG81131	Methylglyoxal / MG	Other			Purified protein, Plasma, Serum, Cell lysate
ARG80878	Neopterin	H	0.7 nmol/l	0.02 - 1 ng/ml	Serum, Plasma, Urine
ARG80470	Nephrires (Metanephrine + Normetanephrine)	H	MT: 13 ng/ml; NMT: 23 ng/ml	MT: 20 - 2000 ng/ml; NMT: 30 - 3000 ng/ml	Urine
ARG81122	Neurotensin	H, Ms, Rat	0.2 ng/ml	0.2 - 3.51 ng/ml	Blood, Plasma, Tissue, CSF extraction
ARG81132	Nitrotyrosine	Other	50 nM		Plasma, Serum, cell lysates, Urine, Other sample matrices
ARG80472	Noradrenaline	H	1.7 ng/ml	5 - 1,000 ng/ml	Plasma, Urine
ARG80474	Noradrenaline	H	20 pg/ml	80 - 12800 pg/ml	Plasma
ARG80475	Noradrenaline	H	1.3 pg/ml	0.2 - 32 ng/ml	Biological fluids
ARG80476	Normetanephrine	H	23 pg/ml	48 - 4800 pg/ml	Plasma
ARG80478	Normetanephrine	H	23 ng/ml	30 - 3000 ng/ml	Urine
ARG80778	Osteocalcin	H	0.8 ng/ml	0.2 - 16 ng/ml	Serum
ARG80879	Oxytocin	H	15 pg/ml	1.5 - 18 pg/ml	Serum, Plasma, Saliva, Breast Milk, Urine, CSF, tissue culture media
ARG80166	PDGF-BB	H	30 pg/ml	62.5-4000 pg/ml	Serum, Plasma, Cell culture supernatants
ARG80846	Placental Lactogen / hPL	H		0.3 - 40 ng/ml	Serum

arigo Cat No.	Target	Tested Reactivity	Sensitivity	Range	Sample Type
ARG80882	Plasma Renin Activity (PRA)	H	0.14 ng/ml	0.35 - 7.50 ng/dl	Plasma
ARG80497	PLGF (Placenta growth factor)	H	< 1.062 pg/ml	1.06 - 1000 pg/ml	Serum
ARG81044	Pregnenolone	H	0.05 ng/ml		Serum
ARG80851	Progesterone	H	0.045 ng/ml	0.2 - 100 pg/ml	Serum, Plasma
ARG80865	Progesterone	H	5 pg/ml	24 - 2000 µg/ml	Saliva
ARG80852	Prolactin	H	0.35 ng/ml	5-5000 pg/ml	Serum
ARG80884	Renin (HS)	H	0.81 pg/ml	33 - 3,000 IU/ml	Serum, Plasma
ARG80147	Resistin	H	8 pg/ml	15.6-1000 pg/ml	Serum, Plasma, Cell culture supernatants
ARG80885	Resistin	H	0.006 ng/ml	100 - 9,000 IU/ml	Serum, Plasma, Cell culture supernatants, Breast Milk, Saliva, Urine
ARG80480	Serotonin	H	6.2 ng/ml	15 - 2500 ng/ml	Serum, Urine, Plasma, PRP, Platelets
ARG80482	Serotonin Research	H	0.005 ng/ml	0.015 - 2.5 ng/ml	Biological fluids
ARG80853	SHBG	H	0.2 nmol/l	0.5 - 200 ng/ml	Serum, Plasma
ARG81133	Sphingosine 1-Phosphate	H, Bov, Hrs, Gt, Ms, Rat			Serum, Plasma, Tissue homogenate, Cell culture lysate
ARG81026	T3 / triiodothyronine (total)	H	< 0.1 ng/ml		Serum, Plasma
ARG81025	T4 / Thyroxine (total)	H	8 nmol/l		Serum
ARG80854	Testosterone	H	0.083 ng/ml	20 - 1,000 pg/ml	Serum, Plasma
ARG80867	Testosterone	All species	2.2 pg/ml	25.63 - 820 pg/ml	Saliva
ARG80855	Testosterone (free)	H	0.06 pg/ml	0.1 - 30 ng/ml	Serum, Plasma
ARG80498	TGF-β1	H	1.9 pg/ml	19 - 600 pg/ml	Serum, Plasma, Cell culture supernatants
ARG80499	TGF-β2	H	10 pg/ml	31.25 - 1,000 pg/ml	Serum, Plasma
ARG80182	Thrombopoietin (Tpo)	H	30 pg/ml	62.5-4000 pg/ml	Serum, Plasma, Cell culture supernatants
ARG80892	Thyreoidal Peroxidase Autoantibodies	H	5 IU/ml	3 - 100 U/ml	Serum, Plasma
ARG80638	Thyroglobulin (hTg)	H	1 ng/ml	10 - 160 IU/ml	Serum, Plasma
ARG80893	Thyroglobulin Autoantibodies	H	10 IU/ml	3 - 50 ng/ml	Serum, Plasma
ARG80483	Tryptophan	H	1.2 µg/ml	2.5 - 250 µg/ml	Serum, Plasma, Urine
ARG80894	TSH	H	0.06 mIU/l	1 - 15 ng/ml	Serum
ARG80484	VMA	H	35 ng/ml	0.06 - 8.0 µg/ml	Urine

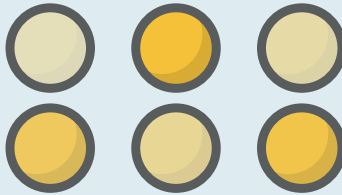
# ELISA Troubleshooting Tips

## No signal



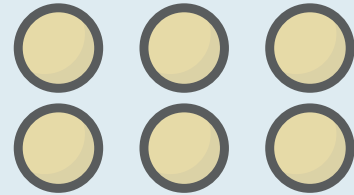
1. Make sure that instructions are followed carefully.
2. Increase concentration of antibodies.
3. Use freshly prepared reagents.
4. Make sure that the settings of plate reader is correct.
5. Increase antibody or substrate incubation time.
6. Increase sample concentration.
7. Make sure that the plate is not dried out during assay.

## Variation among replicates



1. Make sure that washing is done properly.
2. Mix samples gently and evenly.
3. Use freshly prepared reagents.
4. Remove bubbles before plate reading.
5. Use calibrated pipettes.
6. Mix all reagent properly and equilibrate to RT before use.
7. Make sure that bottom of plate is clean.

## Weak signal

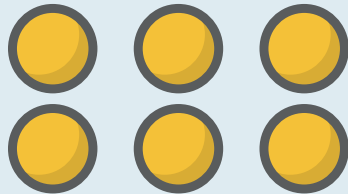


1. Use more antigens or antibodies for plate coating.
2. Use freshly prepared reagents.



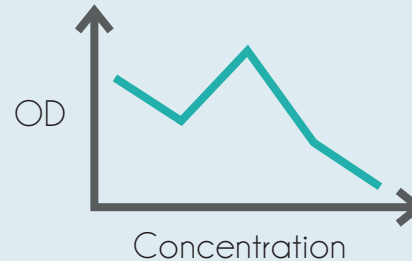
# ELISA Troubleshooting Tips

## High background



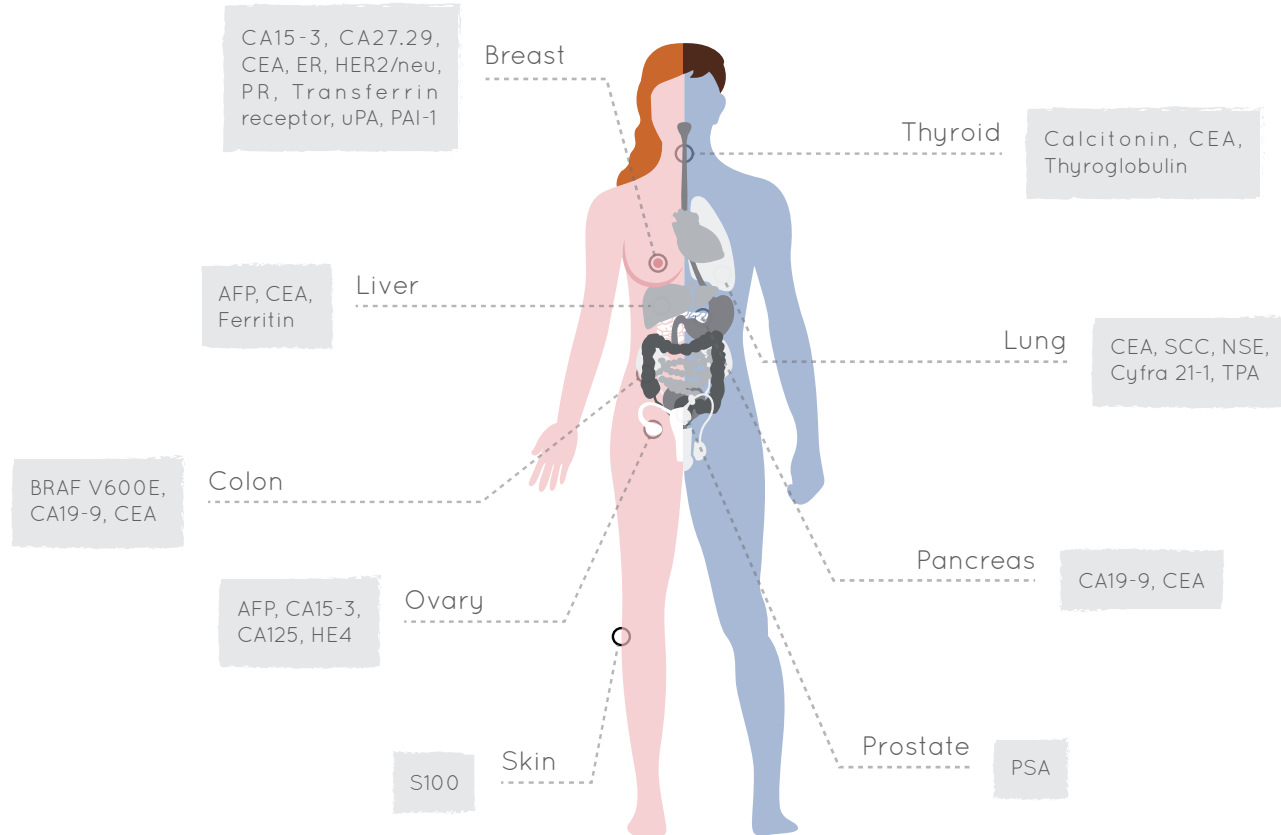
1. Reduce concentration of antibodies.
2. Change to another affinity-purified antibody.
3. Dilute substrate solution.
4. Increase washing cycles.
5. Do not leave plate too long before reading.
6. Increase Tween in wash buffer.
7. Use calibrated pipettes.
8. Mix all reagent properly and equilibrate to RT before use.
9. Increase salt concentration to reduce nonspecific interaction.
10. Perform substrate incubation in dark.
11. Make sure that bottom of plate is clean.

## Poor standard curve



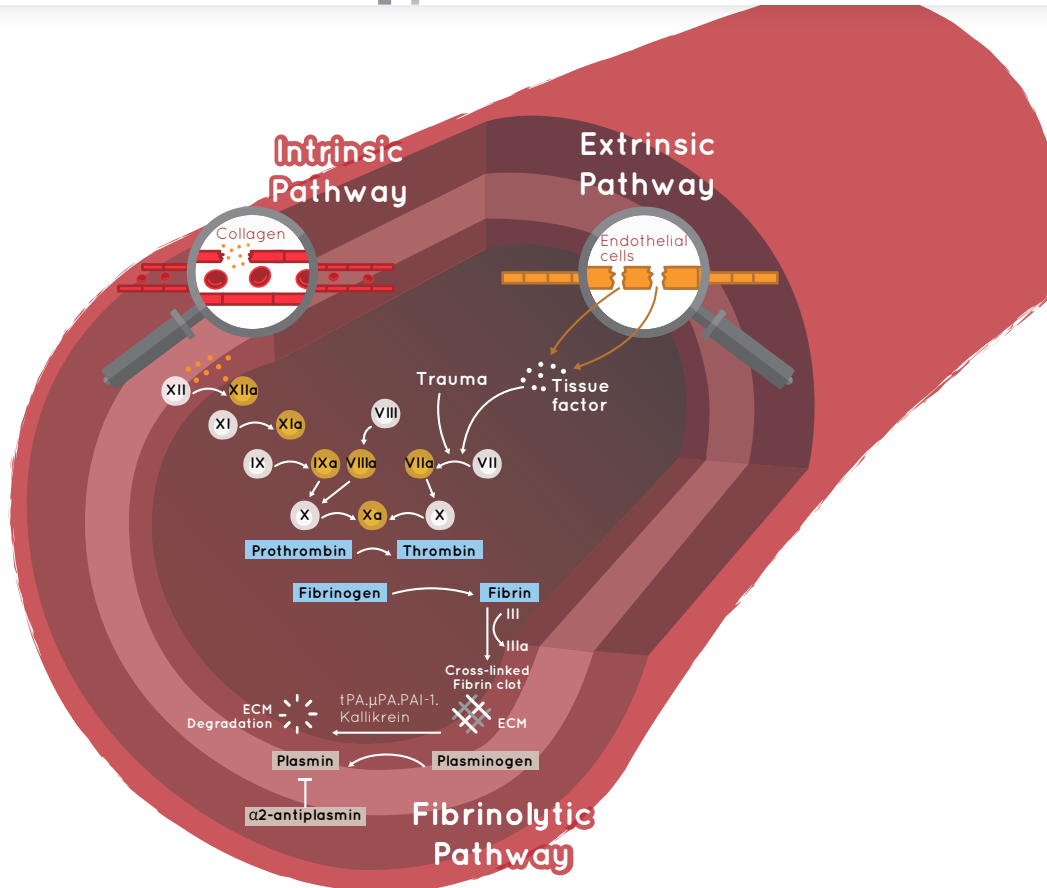
1. Use appropriate diluent as blank.
2. Make sure that standard dilution is performed properly.
3. Briefly spin standard vial before use.
4. Store standards as according to protocol.
5. Use calibrated pipettes.
6. Increase wash cycles.
7. Try plotting log-log or 5-parameter logistic curve fit.

# Cancer & Tumor Markers



arigo Cat No.	Target	Tested Reactivity	Sensitivity	Range	Sample Type
ARG80775	25-OH Vitamin D		2.81 ng/ml	5 - 2,000 U/ml	Serum, Plasma
ARG80911	8-OHdG		0.59 ng/ml	3.9 - 250 pg/ml	Plasma/Serum, Culture Media Samples, Cell Lysates, Tissue Samples, Saliva
ARG80912	8-OHdG		30 pg/ml	0.3 - 30 ng/ml	
ARG80958	ACE	H	10.0 pg/ml	25 - 250 nmol/l	Biological fluids
ARG80959	ACE2	H	10.0 pg/ml	0.5 - 10 ng/ml	Serum, Plasma, Body fluids, Tissue lysate, Cell culture supernatants
ARG80968	ACE2	Rat	0.1 U/L	0.05 - 1.5 ng/ml	Biological fluids
ARG80915	Adropin	Hrs, H, Ms, Rat	0.3 ng/ml	0.3 - 8.2 ng/ml	Blood, Plasma, Tissue, CSF extraction
ARG80640	AFP	H	1.0 IU/ml	0.75 - 12 µg/ml	Serum, Plasma
ARG80960	Angiotensin 1-7	H	2.0 pg/ml	6 - 62 mg/dl	Biological fluids
ARG80961	Angiotensin II	H	2.0 pg/ml	10 - 2560 pg/ml	Biological fluids
ARG80641	β2-Microglobulin	H	0.1 µg/ml	55 - 600 U/ml	Serum, Plasma, Urine
ARG80141	bFGF	H	60 pg/ml	125-8000 pg/ml	Serum, Plasma, Cell culture supernatants
ARG80643	CA125	H	0.25 U/ml	25 - 200 U/ml	Serum, Plasma
ARG80644	CA15-3	H	0.5 U/ml	15 - 240 U/ml	Serum, Plasma
ARG80645	CA19-9	H	0.2 U/ml	1.56 - 25 ng/ml	Serum, Plasma
ARG80896	CA72-4	H	0.79 U/ml	1.56-100pg/ml	Serum, Plasma
ARG80446	Chromogranin-A	H	12.4 µg/l	50 - 1500 µg/l	Serum, Plasma
ARG80897	Cyfra 21-1	H	0.15 ng/ml	7.8-500pg/ml	Serum, Plasma
ARG80137	EGF	H	8 pg/ml	15.6-1000 pg/ml	Serum, Plasma, Cell culture supernatants
ARG80243	EGF	Rat	2 pg/ml	3.9-250 pg/ml	Serum, Plasma, Cell culture supernatants
ARG80943	Endocan/ESM-1	H	0.08 ng/ml	1.5 - 40 µg/ml	Serum, Plasma, Cell culture supernatants
ARG80914	Endothelin-1	Cow, Dog, H, Mk, Ms, P, Rb, Rat	0.13ng/ml	0.13 - 1.72 ng/ml	Blood, Plasma, Tissue, CSF extraction
ARG80189	Heregulin β1	H	30 pg/ml	62.5-4000 pg/ml	Serum, Plasma, Cell culture supernatants
ARG80150	HGF	H	60 pg/ml	125-8000 pg/ml	Serum, Plasma, Cell culture supernatants

arigo Cat No.	Target	Tested Reactivity	Sensitivity	Range	Sample Type
ARG80969	HIF-1 $\alpha$	H, Ms	100 pg/ml	2 - 30 ppm	Cell lysates
ARG80904	Human Betacellulin / BTC	H	15 pg/ml	3.9 - 250 pg/ml	Serum, Plasma, Cell culture supernatants
ARG80145	MMP1 (Total)	H	40 pg/ml	78-5000 pg/ml	Serum, Plasma, Cell culture supernatants
ARG80129	MMP9	H	15 pg/ml	31.25-2000 pg/ml	Serum, Plasma, Cell culture supernatants
ARG80941	NGAL/Lipocalin-2	H	15 pg/ml	1.56 - 100 pg/ml	Serum, Plasma, Cell culture supernatants
ARG80649	PSA	H	0.2 ng/ml	0.75 - 12 ng/ml	Serum, Plasma
ARG80651	PSA, free	H	0.1 ng/ml	15 - 2250 ng/ml	Serum, Plasma
ARG80159	SCF	H	15 pg/ml	31.25-2000 pg/ml	Serum, Plasma, Cell culture supernatants
ARG80238	SCF	Rat	15 pg/ml	31.25-2000 pg/ml	Serum, Plasma, Cell culture supernatants
ARG80222	sRANK Ligand / TNFSF11 / TRANCE	Ms	15 pg/ml	31.25-2000 pg/ml	Serum, Plasma, Cell culture supernatants
ARG80957	Telomerase	H	0.1 ng/ml	0.125 - 16 $\mu$ g/ml	Biological fluids
ARG80136	TGF $\alpha$	H	2 pg/ml	3.9-250 ng/ml	Serum, Plasma, Cell culture supernatants
ARG80123	TGF $\beta$ 1	H	15 pg/ml	31.25-2000 pg/ml	Serum, Plasma, Cell culture supernatants
ARG80211	TGF $\beta$ 1	Ms	15 pg/ml	31.25-2000 pg/ml	Serum, Plasma, Cell culture supernatants
ARG80245	TGF $\beta$ 1	Rat	15 pg/ml	31.25-2000 pg/ml	Serum, Plasma, Cell culture supernatants
ARG80944	Thioredoxin-1/Trx-1	H	30 pg/ml	0.02 - 1.5 $\mu$ g/l	Serum, Plasma, Cell culture supernatants
ARG80187	TIMP1	H	15 pg/ml	31.25-2000 pg/ml	Serum, Plasma, Cell culture supernatants
ARG80144	TIMP4	H	30 pg/ml	62.5-4000 pg/ml	Serum, Plasma, Cell culture supernatants
ARG80899	TPA	H	0.1 ng/ml	31.25-2000pg/ml	Serum
ARG80124	VEGF	H	8 pg/ml	15.6-1000 pg/ml	Serum, Plasma, Cell culture supernatants
ARG80207	VEGF	Ms	8 pg/ml	15.6-1000 pg/ml	Serum, Plasma, Cell culture supernatants
ARG80242	VEGF	Rat	8 pg/ml	15.6-1000 pg/ml	Serum, Plasma, Cell culture supernatants



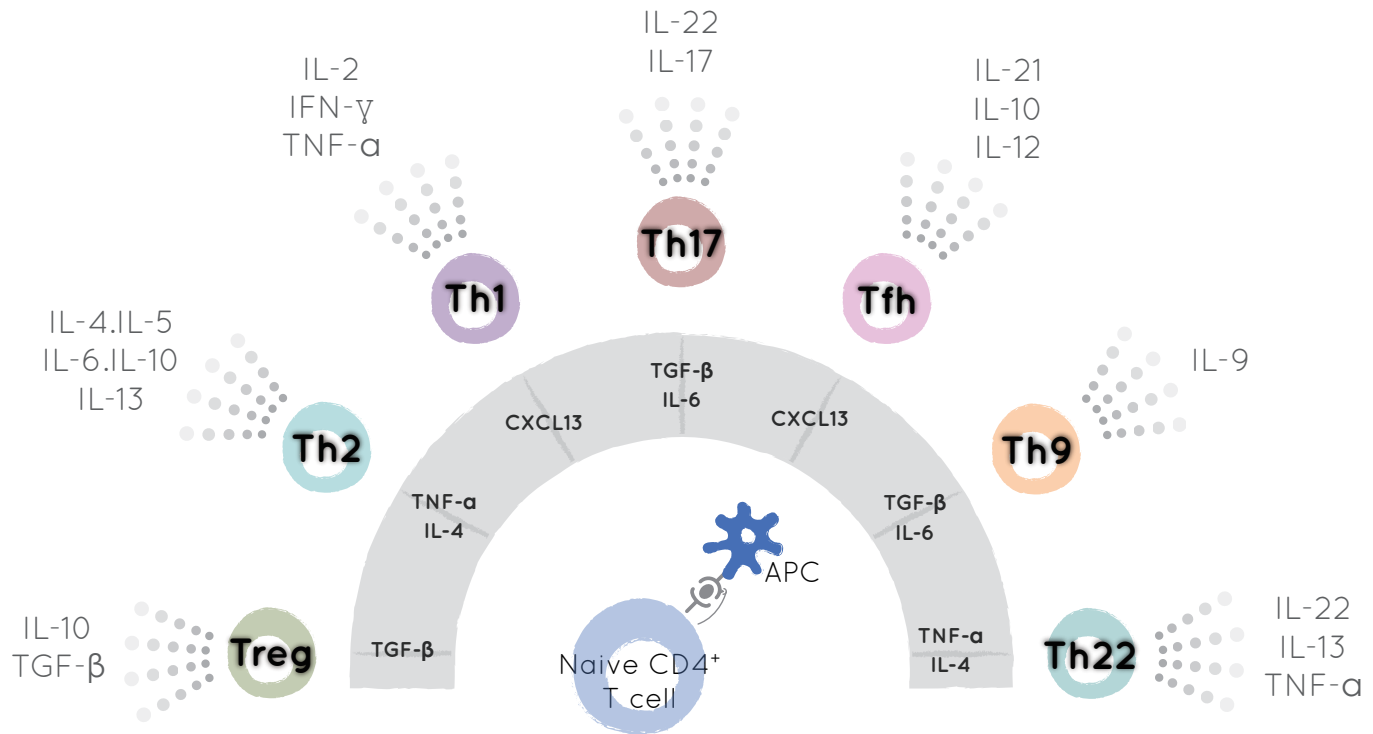
arigo Cat No.	Target	Tested Reactivity	Sensitivity	Range	Sample Type
ARG80965	Albumin	Ms	0.87 ng/ml	1.5 - 24 ppb	Plasma, Serum, Urine, other biological fluids
ARG81100	Albumin	H	0.33 ng/ml	1 - 500 ng/ml	Plasma, Serum, Urine, Cell culture media
ARG81126	Albumin	Rat	6.25 ng/ml		Biological fluids
ARG81096	$\alpha$ -2-Macroglobulin	H	0.20 ng/ml	1 - 250 ng/ml	Plasma
ARG81079	Antiplasmin (total)	H	0.028 ng/ml	0.1 - 100 ng/ml	Plasma
ARG81080	Antiplasmin (total)	Ms	0.065 ng/ml	0.1 - 100 ng/ml	Serum, Plasma
ARG81108	Antithrombin III (total)	H		0.01 - 10 ng/ml	Plasma
ARG81097	Apolipoprotein A1	H	4.9 ng/ml	5 - 5000 ng/ml	Plasma, Serum, Urine
ARG81098	Apolipoprotein B	H	1.5 ng/ml	5 - 5000 ng/ml	Plasma, Serum, Urine
ARG81124	Bovine Serum Albumin	Bov	15 ng/ml		Biological fluids
ARG81125	Bovine Serum Albumin (HS)	Bov	0.5 ng/ml		Biological fluids
ARG80868	C5a	H, P, Rb, R. Mk	20 pg/ml	1.95 - 250 pg/ml	Plasma, Urine
ARG81144	Cardiac Troponin I	H	1.0 ng/ml	2 - 75 ng/ml	Serum
ARG81099	Ceruloplasmin	H	0.333 ng/ml	1 - 1000 ng/ml	Plasma, Serum, Urine, Milk, Saliva, Cell culture media
ARG81090	Complement C3	H	0.0117 ng/ml	0.02 - 10 ng/ml	Plasma, Serum, Urine, Milk, Saliva, Cell culture media
ARG81091	Complement C3	Ms	0.0719 ng/ml	0.1 - 100 ng/ml	Serum, Plasma
ARG81089	CRP	Ms	0.007 ng/ml	0.02 - 2 ng/ml	Plasma
ARG80825	EPO	H	1.1 mIU/ml	1 - 100 ng/ml	Serum
ARG81109	Factor IX (total)	H	0.053 ng/ml	0.1 - 100 ng/ml	Plasma
ARG81112	Factor V (total)	H		0.938 - 60 ng/ml	Plasma
ARG81111	Factor VII (total)	H		0.1 - 20 ng/ml	Plasma
ARG81107	Factor VIII (total)	Mk	0.00035 IU/ml	0.003 - 1.42 IU/ml	Plasma
ARG81110	Factor VIII (total)	H	0.0007 IU/ml	0.0016 - 0.84 IU/ml	Plasma
ARG81121	Factor VIII (total)	Mk	0.00023 IU/ml	0.001 - 0.48 IU/ml	Plasma
ARG81115	Factor X (total)	H	0.039 ng/ml	0.1 - 50 ng/ml	Plasma
ARG81119	Factor X (total)	Ms	0.146 ng/ml	2.5 - 1000 ng/ml	Plasma, Serum, Cell culture media, Tissue extracts

arigo Cat No.	Target	Tested Reactivity	Sensitivity	Range	Sample Type
ARG81114	Factor XI (total)	H	0.006 ng/ml	0.2 - 100 ng/ml	Plasma
ARG80936	Factor XII	Ms		62.5 - 2000 pg/ml	Plasma
ARG81113	Factor XII (total)	H	0.324 ng/ml	0.1 - 100 ng/ml	Plasma
ARG81134	Factor XIII	H			Serum, Plasma, Cell culture, Urine, Saliva, Milk, CSF
ARC80501	Ferritin	H	0.53 ng/ml	5 - 1000 ng/ml	Serum, Plasma
ARG81081	Fibrinogen (total)	H	1.4 ng/ml	3.125 - 800 ng/ml	Serum, Plasma
ARG81082	Fibrinogen (total)	Ms	0.241 ng/ml	3.125 - 800 ng/ml	Serum, Plasma
ARG81083	Fibrinogen (total)	P	0.6 ng/ml	1.56 - 800 ng/ml	Serum, Plasma
ARG81084	Fibrinogen (total)	Rb	0.291 ng/ml	0.5 - 500 ng/ml	Serum, Plasma
ARG81085	Fibrinogen (total)	Rat	0.184 ng/ml	3.125 - 800 ng/ml	Serum, Plasma
ARG81092	IL17A (total)	Ms	4.8 pg/ml	0.01 - 10 ng/ml	Cell culture supernatant
ARG81049	PAI-1 (active)	Dog		0.2 - 100 ng/ml	Plasma
ARG81051	PAI-1 (active)	H	0.11 U/ml	0.125 - 100 U/ml	Plasma
ARG81053	PAI-1 (active)	Ms	0.031 ng/ml	0.05 - 50 ng/ml	Plasma
ARG81055	PAI-1 (active)	P	0.046 ng/ml	0.05 - 50 ng/ml	Plasma
ARG81057	PAI-1 (active)	Rb		0.05 - 50 ng/ml	Plasma
ARG81058	PAI-1 (active)	Rat	0.079 ng/ml	0.05 - 50 ng/ml	Plasma
ARG81050	PAI-1 (total)	Dog	0.138 ng/ml	0.2 - 100 ng/ml	Plasma
ARG81052	PAI-1 (total)	H	0.115 ng/ml	0.25 - 100 ng/ml	Plasma, Serum, Urine, Cell culture media, Tissue extracts
ARG81054	PAI-1 (total)	Ms	0.006 ng/ml	0.05 - 50 ng/ml	Plasma
ARG81059	PAI-1 (total)	Rat	0.014 ng/ml	0.05 - 50 ng/ml	Plasma
ARG81056	PAI-1 tPA complex	P	0.178 ng/ml	0.2 - 200 ng/ml	Plasma, Serum, Cell culture media, Tissue extracts
ARG81060	PAI-1 tPA complex	H		0.5 - 200 ng/ml	Plasma, Serum, Urine, Cell culture media, Tissue extracts
ARG81061	PAI-1 uPA complex	H	0.07 ng/ml	0.1 - 100 ng/ml	Plasma, Serum, Urine, Cell culture media, Tissue extracts
ARG80784	PAPP A	H	0.133 µg/ml	10 - 400 ppb	Serum, Plasma

arigo Cat No.	Target	Tested Reactivity	Sensitivity	Range	Sample Type
ARG81123	Plasmin/antiplasmin (PAP) complex	H	0.155 ng/ml	1 - 1000 ng/ml	Plasma, Serum, Urine, Cell culture media, Tissue extracts
ARG80937	Plasminogen	Ms		62.5 - 2000 pg/ml	Biological fluids
ARG81078	Plasminogen (total)	H	0.11 ng/ml	0.5 - 500 ng/ml	Plasma, Serum, Cell culture media
ARG81116	Prekallikrein (total)	H	0.018 ug/ml	0.02 - 10 ug/ml	Plasma
ARG81093	Prolactin	H	0.138 ng/ml	0.1 - 100 ng/ml	Plasma, Serum, Milk
ARG81094	Prolactin	Ms		0.1 - 100 ng/ml	Plasma
ARG81095	Prolactin	Rat	3.39 ng/ml	0.1 - 100 ng/ml	Plasma
ARG81086	Prorenin	H	0.013 ng/ml	0.02 - 10 ng/ml	Serum, Plasma
ARG81087	Prorenin	H	0.016 ng/ml	0.02 - 10 ng/ml	Urine, Cell culture supernatants, Tissue extracts
ARG80935	Prorenin / Renin	Rat		0.1 - 1000 pg/ml	Serum, Plasma, Cell culture supernatants
ARG81088	Prorenin / Renin (total)	Ms		0.2 - 100 ng/ml	Cell culture supernatant
ARG81037	Protein C	H	0.06		Plasma
ARG81038	Protein S	H	0.01		Plasma
ARG81120	Prothrombin	Ms	0.386 ng/ml	1 - 500 ng/ml	Plasma
ARG80938	Prothrombin	Ms		0 - 100 ng/ml	Biological fluids
ARG81117	Prothrombin (total)	H	0.166 ng/ml	0.25 - 100 ng/ml	Plasma
ARG80762	Serpin E1 / PAI1	H	24 pg/ml	1.9 - 90 ng/ml	Serum, Plasma, Cell culture supernatants
ARG81118	Thrombin Anti-thrombin Complex (total)	H	0.718 ng/ml	1 - 1000 ng/ml	Serum, Plasma
ARG81062	tPA (active)	H	0.006 IU/ml	0 - 1 IU/ml	Plasma
ARG81064	tPA (active)	Ms	0.014 ng/ml	0.05 - 50 ng/ml	Plasma
ARG81066	tPA (active)	P	0.018 ng/ml	0.02 - 10 ng/ml	Plasma
ARG81067	tPA (active)	Rb	0.181 ng/ml	0.05 - 20 ng/ml	Plasma
ARG81068	tPA (active)	Rat	0.043 ng/ml	0.1 - 50 ng/ml	Plasma
ARG81063	tPA (total)	H	0.0372 ng/ml	0.02 - 10 ng/ml	Plasma, Serum, Urine, Cell culture media, Tissue extracts
ARG81065	tPA (total)	Ms	0.035 ng/ml	0.1 - 50 ng/ml	Plasma



arigo Cat No.	Target	Tested Reactivity	Sensitivity	Range	Sample Type
ARG81069	tPA (total)	Rat	0.042 ng/ml	0.1 - 50 ng/ml	Plasma
ARG81070	uPA (active)	H	0.015 ng/ml	0.1 - 50 ng/ml	Plasma
ARG81072	uPA (active)	Ms	0.022 ng/ml	0.025 - 10 ng/ml	Plasma
ARG81074	uPA (active)	Rat		0.05 - 10 ng/ml	Plasma
ARG81071	uPA (total)	H	0.043 ng/ml	0.1 - 50 ng/ml	Plasma, Serum, Cell culture media, Tissue extracts
ARG81073	uPA (total)	Ms	0.00998 ng/ml	0.01 - 10 ng/ml	Plasma
ARG81075	uPA (total)	Rat	0.0172 ng/ml	0.01 - 10 ng/ml	Plasma
ARG81076	Vitronectin (total)	H	0.176 ng/ml	0.05 - 100 ng/ml	Plasma, Serum, Cell culture media, Tissue extracts
ARG81077	Vitronectin (total)	Ms	0.048 ng/ml	5 - 1000 ng/ml	Plasma, Serum, Cell culture media, Tissue extracts



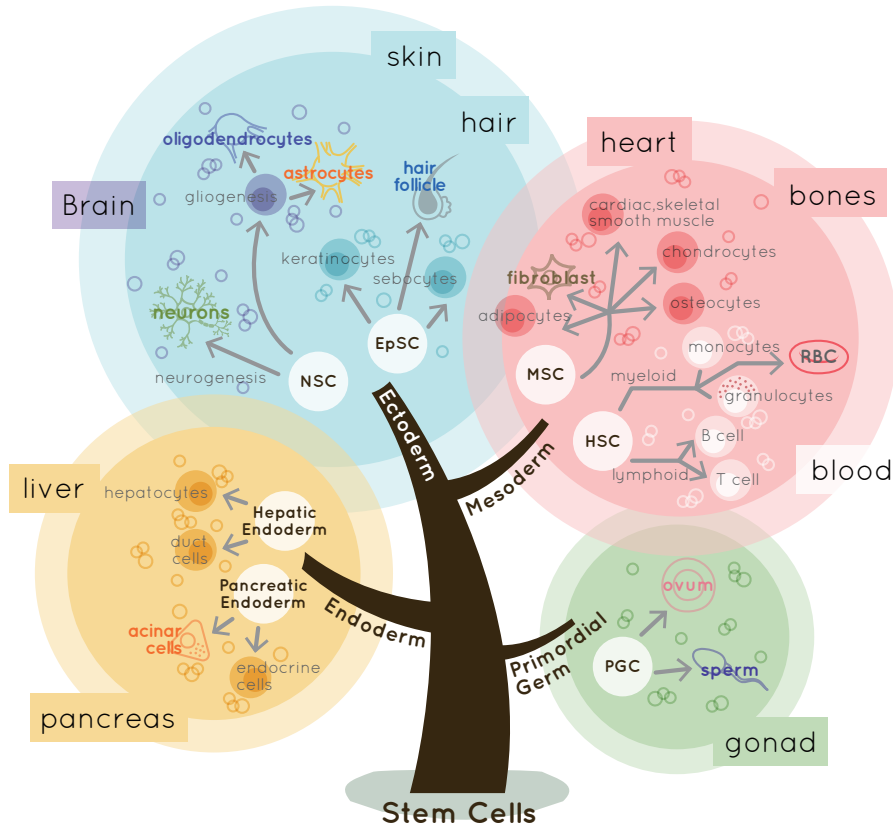
arigo Cat No.	Target	Tested Reactivity	Sensitivity	Range	Sample Type
ARG80154	BAFF	H	30 pg/ml	62.5-4000 pg/ml	Serum, Plasma, Cell culture supernatants
ARG80226	CCL21 / Exodus2	Ms	63 pg/ml	125-8000 pg/ml	Serum, Plasma, Cell culture supernatants
ARG80184	CTACK / CCL27	H	8 pg/ml	15.6-1000 pg/ml	Serum, Plasma, Cell culture supernatants
ARG80208	Cxcl1	Ms	8 pg/ml	15.6-1000 pg/ml	Serum, Plasma, Cell culture supernatants
ARG80236	CXCL1 / CINC1	Rat	2 pg/ml	3.9-250 pg/ml	Serum, Plasma, Cell culture supernatants
ARG80181	CXCL10 / IP10	H	2 pg/ml	3.9-250 pg/ml	Serum, Plasma, Cell culture supernatants
ARG80220	CXCL10 / IP10	Ms	4 pg/ml	7.8-500 pg/ml	Serum, Plasma, Cell culture supernatants
ARG80121	CXCL12 / SDF-1	H	60 pg/ml	125-8000 pg/ml	Serum, Plasma, Cell culture supernatants
ARG80188	CXCL16	H	8 pg/ml	15.6-1000 pg/ml	Serum, Plasma, Cell culture supernatants
ARG80146	CXCL4 / PF4	H	30 pg/ml	62.5-4000 pg/ml	Serum, Plasma, Cell culture supernatants
ARG80143	G-CSF	H	15 pg/ml	31.25-2000 pg/ml	Serum, Plasma, Cell culture supernatants
ARG80122	GM-CSF	H	8 pg/ml	15.6-1000 pg/ml	Serum, Plasma, Cell culture supernatants
ARG80229	GM-CSF	Ms	4 pg/ml	7.8-500 pg/ml	Serum, Plasma, Cell culture supernatants
ARG80185	GRO $\beta$ / CXCL2	H	0.8 pg/ml	1.56-100 pg/ml	Serum, Plasma, Cell culture supernatants
ARG80156	IFN $\alpha$	H	6 pg/ml	11-700 pg/ml	Serum, Plasma, Cell culture supernatants
ARG80951	IFN $\alpha$	Rat	0.5 pg/ml	0.05 - 3 $\mu$ g/l	Serum, Plasma, body fluids, tissus lysates
ARG80117	IFN $\gamma$	H	8 pg/ml	15.6-1000 pg/ml	Serum, Plasma, Cell culture supernatants
ARG80205	IFN $\gamma$	Ms	8 pg/ml	15.6-1000 pg/ml	Serum, Plasma, Cell culture supernatants
ARG80240	IFN $\gamma$	Rat	8 pg/ml	15.6-1000 pg/ml	Serum, Plasma, Cell culture supernatants
ARG80250	IFN $\gamma$	Bov	8 pg/ml	15.6-1000 pg/ml	Serum, Plasma, Cell culture supernatants
ARG80909	IFN $\gamma$	Mk	2pg/ml	78 - 5000 pg/ml	Serum, Plasma, Cell culture supernatants
ARG80116	IFN $\gamma$ (HS)	H	4 pg/ml	7.8-500 pg/ml	Serum, Plasma, Cell culture supernatants
ARG80191	IL1 $\alpha$	H	30 pg/ml	62.5-4000 pg/ml	Serum, Plasma, Cell culture supernatants
ARG80204	IL1 $\alpha$	Ms	15 pg/ml	31.25-2000 pg/ml	Serum, Plasma, Cell culture supernatants
ARG80237	IL1 $\alpha$	Rat	4 pg/ml	7.8-500 pg/ml	Serum, Plasma, Cell culture supernatants

arigo Cat No.	Target	Tested Reactivity	Sensitivity	Range	Sample Type
ARG80504	IL1 $\alpha$	H	1.1 pg/ml	1.6 - 100 pg/ml	Serum, Plasma, Urine, Cell culture supernatants
ARG80101	IL1 $\beta$	H	4 pg/ml	7.8-500 pg/ml	Serum, Plasma, Cell culture supernatants
ARG80196	IL1 $\beta$	Ms	8 pg/ml	15.6-1000 pg/ml	Serum, Plasma, Cell culture supernatants
ARG80235	IL1 $\beta$	Rat	30 pg/ml	62.5-4000 pg/ml	Serum, Plasma, Cell culture supernatants
ARG80503	IL-1 $\beta$	H	0.35 pg/ml	18 - 933 pg/ml	Serum, Plasma
ARG80113	IL10	H	1 pg/ml	1.56-100 pg/ml	Serum, Plasma, Cell culture supernatants
ARG80200	IL10	Ms	15 pg/ml	31.25-2000 pg/ml	Serum, Plasma, Cell culture supernatants
ARG80234	IL10	Rat	30 pg/ml	62.5-4000 pg/ml	Serum, Plasma, Cell culture supernatants
ARG80828	IL10	H	1.6 pg/ml	0.25 - 50 mg/ml	Serum
ARG80112	IL10 (HS)	H	0.15 pg/ml	0.31-20 pg/ml	Serum, Plasma, Cell culture supernatants
ARG80139	IL11	H	15 pg/ml	31.25-2000 pg/ml	Serum, Plasma, Cell culture supernatants
ARG80172	IL12 / 23 P40	H	8 pg/ml	15.6-1000 pg/ml	Serum, Plasma, Cell culture supernatants
ARG80227	IL12 / IL23 p40	Ms	8 pg/ml	15.6-1000 pg/ml	Serum, Plasma, Cell culture supernatants
ARG80115	IL12 p70	H	8 pg/ml	15.6-1000 pg/ml	Serum, Plasma, Cell culture supernatants
ARG80201	IL12 p70	Ms	8 pg/ml	15.6-1000 pg/ml	Serum, Plasma, Cell culture supernatants
ARG80114	IL12 p70 (HS)	H	1.5 pg/ml	3.125-200 pg/ml	Serum, Plasma, Cell culture supernatants
ARG80829	IL12 p70 human	H	2.1 pg/ml	0.1 - 10 ng/ml	Serum, Plasma, Cell culture supernatants
ARG80148	IL13	H	15 pg/ml	31.25-2000 pg/ml	Serum, Plasma, Cell culture supernatants
ARG80223	IL13	Ms	8 pg/ml	15.6-1000 pg/ml	Serum, Plasma, Cell culture supernatants
ARG80149	IL13 (HS)	H	4 pg/ml	8-500 pg/ml	Serum, Plasma, Cell culture supernatants
ARG80168	IL15	H	8 pg/ml	15.6-1000 pg/ml	Serum, Plasma, Cell culture supernatants
ARG80225	IL15	Ms	12 pg/ml	23.44-1500 pg/ml	Serum, Plasma, Cell culture supernatants
ARG80161	IL17 / IL17A	H	8 pg/ml	15.6-1000 pg/ml	Serum, Plasma, Cell culture supernatants
ARG80203	IL17 / IL17A	Ms	8 pg/ml	15.6-1000 pg/ml	Serum, Plasma, Cell culture supernatants
ARG80247	IL-17 / IL-17A	Rat	8 pg/ml	15.6-1000 pg/ml	Serum, Plasma, Cell culture supernatants

arigo Cat No.	Target	Tested Reactivity	Sensitivity	Range	Sample Type
ARG80162	IL17 / IL17A (HS)	H	2 pg/ml	3.125-200 pg/ml	Serum, Plasma, Cell culture supernatants
ARG80219	IL17A	Ms	0.8 pg/ml	1.56 - 100 pg/ml	Serum, Plasma, Cell culture supernatants
ARG80165	IL17E	H	15 pg/ml	31.25-2000 pg/ml	Serum, Plasma, Cell culture supernatants
ARG80202	IL17E	Ms	30 pg/ml	62.5-4000 pg/ml	Serum, Plasma, Cell culture supernatants
ARG80138	IL18	H	8 pg/ml	15.6-1000 pg/ml	Serum, Plasma, Cell culture supernatants
ARG80946	IL18	Ms	62 pg/ml	0.02 - 1.5 ng/ml	Serum, Plasma, Cell culture supernatants
ARG80170	IL1F7 / FIL1 zeta / IL37	H	15 pg/ml	31.25-2000 pg/ml	Serum, Plasma, Cell culture supernatants
ARG80193	IL1RA	H	50 pg/ml	93.75-6000 pg/ml	Serum, Plasma, Cell culture supernatants
ARG80102	IL2	H	8 pg/ml	15.6-1000 pg/ml	Serum, Plasma, Cell culture supernatants
ARG80197	IL2	Ms	8 pg/ml	15.6-1000 pg/ml	Serum, Plasma, Cell culture supernatants
ARG80231	IL2	Rat	15 pg/ml	31.25-2000 pg/ml	Serum, Plasma, Cell culture supernatants
ARG80103	IL2 (HS)	H	1.6 pg/ml	3.2-200 pg/ml	Serum, Plasma, Cell culture supernatants
ARG80830	IL2 human	H	9.9 pg/ml	5 - 200 mIU/ml	Serum, Plasma, Cell culture supernatants, Urine, Amniotic fluid, Whole blood
ARG80151	IL21	H	24 pg/ml	46.8-3000 pg/ml	Serum, Plasma, Cell culture supernatants
ARG80217	IL21	Ms	50 pg/ml	93.75-6000 pg/ml	Serum, Plasma, Cell culture supernatants
ARG80152	IL22	H	8 pg/ml	15.6-1000 pg/ml	Serum, Plasma, Cell culture supernatants
ARG80218	IL22	Ms	24 pg/ml	46.88-3000 pg/ml	Serum, Plasma, Cell culture supernatants
ARG80163	IL23	H	8 pg/ml	15.6-1000 pg/ml	Serum, Plasma, Cell culture supernatants
ARG80213	IL23	Ms	30 pg/ml	62.5-4000 pg/ml	Serum, Plasma, Cell culture supernatants
ARG80119	IL27	H	30 pg/ml	62.5-4000 pg/ml	Serum, Plasma, Cell culture supernatants
ARG80214	IL27	Ms	15 pg/ml	31.25-2000 pg/ml	Serum, Plasma, Cell culture supernatants
ARG80169	IL29 / IFN lambda	H	15 pg/ml	31.25-2000 pg/ml	Serum, Plasma, Cell culture supernatants
ARG80104	IL2sR $\alpha$	H	15 pg/ml	31.25-2000 pg/ml	Serum, Plasma, Cell culture supernatants
ARG80105	IL3	H	15 pg/ml	31.25-2000 pg/ml	Serum, Plasma, Cell culture supernatants
ARG80153	IL31	H	30 pg/ml	62.5-4000 pg/ml	Serum, Plasma, Cell culture supernatants

arigo Cat No.	Target	Tested Reactivity	Sensitivity	Range	Sample Type
ARG80179	IL33	H	8 pg/ml	15.6-1000 pg/ml	Serum, Plasma, Cell culture supernatants
ARG80228	IL33	Ms	24 pg/ml	46.8-3000 pg/ml	Serum, Plasma, Cell culture supernatants
ARG80230	IL33R / ST2	Ms	0.08 ng/ml	0.156-10 ng/ml	Serum, Plasma, Cell culture supernatants
ARG80127	IL38	H	30 pg/ml	62.5 - 4000 pg/ml	Serum, Plasma, Cell culture supernatants
ARG80106	IL4	H	8 pg/ml	15.6-1000 pg/ml	Serum, Plasma, Cell culture supernatants
ARG80198	IL4	Ms	8 pg/ml	15.6-1000 pg/ml	Serum, Plasma, Cell culture supernatants
ARG80232	IL4	Rat	30 pg/ml	62.5-4000 pg/ml	Serum, Plasma, Cell culture supernatants
ARG80107	IL4 (HS)	H	0.4 pg/ml	0.78-50 pg/ml	Serum, Plasma, Cell culture supernatants
ARG80910	IL4 (HS)	Ms	0.8 pg/ml	0-100 ng/ml	Serum, Plasma, Cell culture supernatants
ARG80108	IL4 (US)	H	0.04 pg/ml	0.08-5 pg/ml	Serum, Plasma, Cell culture supernatants
ARG80176	IL5	H	8 pg/ml	15.6-1000 pg/ml	Serum, Plasma, Cell culture supernatants
ARG80907	IL-5	Ms	8 pg/ml	0-25 ng/ml	Serum, Plasma, Cell culture supernatants
ARG80110	IL6	H	4 pg/ml	7.8-500 pg/ml	Serum, Plasma, Cell culture supernatants
ARG80199	IL6	Ms	8 pg/ml	15.6-1000 pg/ml	Serum, Plasma, Cell culture supernatants
ARG80233	IL6	Rat	30 pg/ml	62.5-4000 pg/ml	Serum, Plasma, Cell culture supernatants
ARG80505	IL6	H	0.92 pg/ml	1.56 - 100 pg/ml	Serum, Plasma, Cell culture supernatants
ARG80109	IL6 (HS)	H	0.8 pg/ml	1.56-100 pg/ml	Serum, Plasma, Cell culture supernatants
ARG80177	IL7	H	8 pg/ml	15.6-1000 pg/ml	Serum, Plasma, Cell culture supernatants
ARG80111	IL8	H	4 pg/ml	7.8-500 pg/ml	Serum, Plasma, Cell culture supernatants
ARG80506	IL8	H	1.1 pg/ml	40.4 - 1845 pg/ml	Serum
ARG80178	IL9	H	24 pg/ml	46.8-3000 pg/ml	Serum, Plasma, Cell culture supernatants
ARG80929	Inflammatory Cytokine multiplex (IL-1 $\alpha$ , IL-1 $\beta$ , IL-6, IL-8, GM-CSF, INF- $\gamma$ , MCAF and TNF- $\alpha$ )	H		62.5 - 4000 pg/ml	Cell culture supernatant, biological samples
ARG81136	Interferon $\beta$	H	50 pg/ml		Cell culture supernatants
ARG81137	Interferon $\beta$	Ms	15.6 pg/ml		Cell culture supernatants, Serum
ARG80128	MCP-1 / CCL2	H	8 pg/ml	15.6-1000 pg/ml	Serum, Plasma, Cell culture supernatants

arigo Cat No.	Target	Tested Reactivity	Sensitivity	Range	Sample Type
ARG80212	MCP-1 / CCL2	Ms	15 pg/ml	31.25-2000 pg/ml	Serum, Plasma, Cell culture supernatants
ARG80246	MCP-1 / CCL2	Rat	15 pg/ml	31.25-2000 pg/ml	Serum, Plasma, Cell culture supernatants
ARG80180	MCP2 / CCL8	H	0.8 pg/ml	1.56-100 pg/ml	Serum, Plasma, Cell culture supernatants
ARG80209	MDC	Ms	2 pg/ml	3.9-250 pg/ml	Serum, Plasma, Cell culture supernatants
ARG80192	MIG / CXCL9	H	8 pg/ml	15.6-1000 pg/ml	Serum, Plasma, Cell culture supernatants
ARG80908	MIP-1 <b>α</b>	Rat	2 pg/ml	0.01-100 ng/ml	Serum, Plasma, Cell culture supernatants
ARG80167	MIP1 <b>α</b> / CCL3	H	15 pg/ml	31.25-2000 pg/ml	Serum, Plasma, Cell culture supernatants
ARG80906	MIP-1 <b>α</b> / CCL3	Ms	1.6 pg/ml	0 - 25 ng/ml	Serum, Plasma, Cell culture supernatants
ARG80174	MIP1 <b>β</b>	H	2 pg/ml	3.125-200 pg/ml	Serum, Plasma, Cell culture supernatants
ARG80221	MIP2 / CXCL2	Ms	4 pg/ml	7.8-500 pg/ml	Serum, Plasma, Cell culture supernatants
ARG80155	RANTES	H	8 pg/ml	15.6-1000 pg/ml	Serum, Plasma, Cell culture supernatants
ARG80210	RANTES	Ms	4 pg/ml	7.8-500 pg/ml	Serum, Plasma, Cell culture supernatants
ARG80244	RANTES	Rat	2 pg/ml	3.9-250 pg/ml	Serum, Plasma, Cell culture supernatants
ARG80118	RELM <b>β</b>	H	4 pg/ml	7.8-500 pg/ml	Serum, Plasma, Cell culture supernatants
ARG80130	sCD40L	H	30 pg/ml	62.5-4000 pg/ml	Serum, Plasma, Cell culture supernatants
ARG80183	sRANK Ligand / TNFSF11 / TRANCE	H	15 pg/ml	31.25-2000 pg/ml	Serum, Plasma, Cell culture supernatants
ARG80222	sRANK Ligand / TNFSF11 / TRANCE	Ms	15 pg/ml	31.25-2000 pg/ml	Serum, Plasma, Cell culture supernatants
ARG80190	TL1A	H	15 pg/ml	31.25-2000 pg/ml	Serum, Plasma, Cell culture supernatants
ARG80120	TNF <b>α</b>	H	8 pg/ml	15.6-1000 pg/ml	Serum, Plasma, Cell culture supernatants
ARG80206	TNF <b>α</b>	Ms	8 pg/ml	15.6-1000 pg/ml	Serum, Plasma, Cell culture supernatants
ARG80241	TNF <b>α</b>	Rat	30 pg/ml	62.5-4000 pg/ml	Serum, Plasma, Cell culture supernatants
ARG81039	TNF <b>α</b> (total)	H	5 pg/ml		Serum, Plasma, Cell culture supernatants
ARG80100	TNF- <b>α</b> (HS)	H	1.56 pg/ml	3.1 - 200 pg/ml	Serum, Plasma, Cell culture supernatants
ARG80160	TWEAK	H	15 pg/ml	31.25-2000 pg/ml	Serum, Plasma, Cell culture supernatants



MSC: Mesenchymal stem cells, HSC: Hematopoietic stem cells, RBC: Red blood cells, NSC: Neural stem cells, EpSC: Epidermal stem cells



arigo Cat No.	Target	Tested Reactivity	Sensitivity	Range	Sample Type
ARG80952	BDNF	H	7.8 pg/ml	0 - 3 µg/l	Blood, Tissue, CSF extraction
ARG80133	β NGF	H	4 pg/ml	7.8-500 pg/ml	Serum, Plasma, Cell culture supernatants
ARG80141	bFGF	H	60 pg/ml	125-8000 pg/ml	Serum, Plasma, Cell culture supernatants
ARG80971	BMP15	H	10 pg/ml	10 - 400 ppb	Biological fluids
ARG80164	BMP2	H	30 pg/ml	62.5-4000 pg/ml	Serum, Plasma, Cell culture supernatants
ARG80137	ECF	H	8 pg/ml	15.6-1000 pg/ml	Serum, Plasma, Cell culture supernatants
ARG80243	ECF	Rat	2 pg/ml	3.9-250 pg/ml	Serum, Plasma, Cell culture supernatants
ARG81139	Endostatin	H	12 pg/ml		Biological fluids
ARG80158	FGF21	H	15 pg/ml	31.25-2000 pg/ml	Serum, Plasma, Cell culture supernatants
ARG80970	GDF9	H	10 pg/ml	1 - 40 ppm	Biological fluids
ARG80150	HGF	H	60 pg/ml	125-8000 pg/ml	Serum, Plasma, Cell culture supernatants
ARG80847	Inhibin A (heterodimer)	H	1 pg/ml	5 - 200 ng/ml	Serum, Plasma
ARG80849	Inhibin B Gen II (heterodimer)	H	2.6 pg/ml	4 - 300 nmol/l	Serum, Plasma
ARG80955	LIF	H	< 15 pg/ml	6.3 - 100 U/ml	Serum, Plasma, Urine, Cell culture supernatants
ARG80784	PAPP A	H	0.133 µg/ml	10 - 400 ppb	Serum, Plasma
ARG80166	PDGF-BB	H	30 pg/ml	62.5-4000 pg/ml	Serum, Plasma, Cell culture supernatants
ARG80142	PIGF1	H	15 pg/ml	31.25-2000 pg/ml	Serum, Plasma, Cell culture supernatants
ARG81130	Sclerostin (SOST)	H	15 pg/ml		Serum, Plasma, Cell culture supernatants
ARG80957	Telomerase	H	0.1 ng/ml	0.125 - 16 µg/ml	Biological fluids
ARG80136	TGF α	H	2 pg/ml	3.9-250 ng/ml	Serum, Plasma, Cell culture supernatants
ARG80123	TGF β1	H	15 pg/ml	31.25-2000 pg/ml	Serum, Plasma, Cell culture supernatants
ARG80211	TGF β1	Ms	15 pg/ml	31.25-2000 pg/ml	Serum, Plasma, Cell culture supernatants
ARG80245	TGF β1	Rat	15 pg/ml	31.25-2000 pg/ml	Serum, Plasma, Cell culture supernatants
ARG80124	VEGF	H	8 pg/ml	15.6-1000 pg/ml	Serum, Plasma, Cell culture supernatants
ARG80207	VEGF	Ms	8 pg/ml	15.6-1000 pg/ml	Serum, Plasma, Cell culture supernatants
ARG80242	VEGF	Rat	8 pg/ml	15.6-1000 pg/ml	Serum, Plasma, Cell culture supernatants

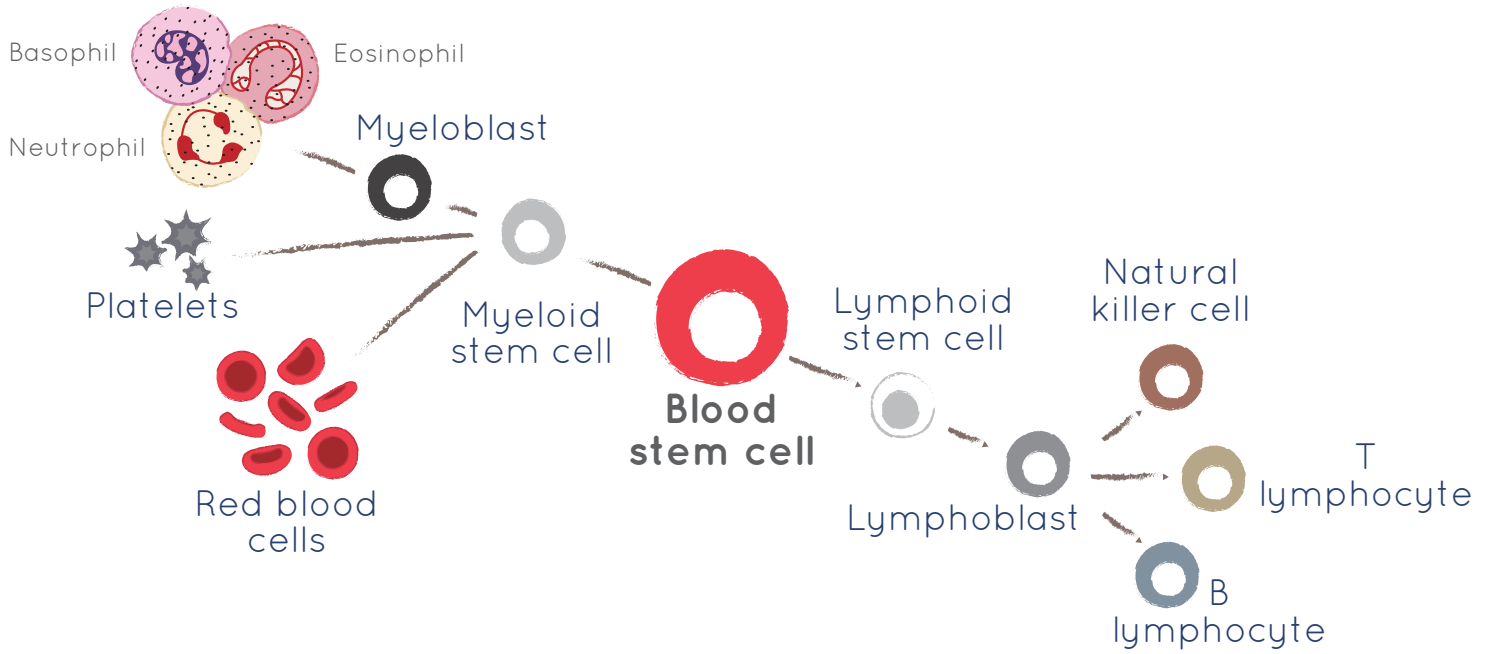


arigo Cat No.	Target	Tested Reactivity	Sensitivity	Range	Sample Type
ARG81030	Aflatoxin (total)	Other	0.015 ng/ml		Food
ARG80786	Aflatoxin B1		5 pg/ml	2 - 60 ppm	Food
ARG81029	Aflatoxin B1	Other	0.5 ppb		Food
ARG80965	Albumin	Ms	0.87 ng/ml	1.5 - 24 ppb	Plasma, Serum, Urine, other biological fluids
ARG81100	Albumin	H	0.33 ng/ml	1 - 500 ng/ml	Plasma, Serum, Urine, Cell culture media
ARG81126	Albumin	Rat	6.25 ng/ml		Biological fluids
ARG80821	Allergen-related IgG4 Ab screen (20 Food Antigens)	H		10.1 - 158 mIU/ml	Serum, Plasma
ARG80788	Almond		0.2 ppm	0.05 - 5 ng/ml	Food
ARG80789	$\beta$ Lactoglobulin		1.5 ppb	20 - 400 ppb	Food
ARG80806	Bovine Milk protein	Bov	0.05 ppm	4 - 400 ng/ml	Food
ARG81124	Bovine Serum Albumin	Bov	15 ng/ml		Biological fluids
ARG81125	Bovine Serum Albumin (HS)	Bov	0.5 ng/ml		Biological fluids
ARG80790	Casein		0.04 ppm	2 - 80 ng/ml	Food
ARG80791	Cashew		0.2 ppm	0.2 - 5 ppm	Food
ARG80792	Chloramphenicol		0.03 ng/ml	0.4 - 10 ppm	Food
ARG81031	Coconut	Other	0.4 ppm		Food
ARG80793	Crustacean Tropomyosin		0.09 ppb	4 - 100 ppm	Food
ARG80794	Deoxynivalenol		0.5 ng/ml	4 - 400 ng/ml	Food
ARG80795	Deoxynivalenol (Rapid/HS)	Bacteria	0.08 ppm	0.5 - 25 ng/ml	Food
ARG80803	Derivatized histamine		0.15 mg/l	2 - 60 ppm	Food
ARG80796	Egg White proteins	Chk	0.05 ppm	0.05 - 5 ppm	Food
ARG80797	Fish Parvalbumin	Fish	1.4 ppm	2 -60 ppm	Food
ARG80798	Folic Acid		2 ng/ml	1 - 40 ppm	Food
ARG80799	Fumonisin		0.5 ng/ml	0.5 - 50 ng/ml	Food
ARG80800	Fumonsin (Rapid)	Bacteria	0.015 ppm	2 - 30 ppm	Food

arigo Cat No.	Target	Tested Reactivity	Sensitivity	Range	Sample Type
ARG80801	Gliadin	Other	0.3 ppm	25 - 250 ppb	Food
ARG80802	Hazelnut	Plant	0.3 ppm	0.4 - 10 ppm	Food
ARG80822	IgG4 Screen Nutritional 88	H	depending on allergen	14 - 2,101 pg/ml	Serum, Plasma
ARG80804	Lupin		0.2 ppm	25 - 500 ppb	Food
ARG80805	Lysozyme	Chk	2 ppb	1 - 40 ppm	Food
ARG81032	Macadamia nut	Other	0.1 ppm		Food
ARG81033	Molluscs Tropomyosin	Other	1.7 ppb		Food
ARG80807	Mustard	Plant	1 ppm	1 - 40 ppm	Food
ARG80808	Ovalbumin	Chk	4 ppb	2 - 30 ppm	Food
ARG80809	Peanut	Plant	0.1 ppm	40 - 1,000 ppb	Food
ARG80810	Penicillin		3 ng/ml	2 - 200 ng/ml	Food
ARG80811	Pistachio		0.13 ppm	0.4 - 40 ng/ml	Food
ARG80812	Sesame	Plant	0.2 ppm	1 - 25 ng/ml	Food
ARG80813	Soja (Soy)	Plant	16 ppb	2 - 60 ppm	Food
ARG80814	Streptomycin	Bacteria	1 ng/ml	10 - 500 ppb	Food
ARG81034	T-2 Toxin	Other	13 ppb		Food
ARG81035	Tetracycline	Other	0.024 ng/ml		Food
ARG80816	Vitamin B12	Other	0.3 ng/ml	0.35 - 17.5 U/ml	Food
ARG80817	Vitamin H (Biotin)	Other	0.5 ng/ml	0.35 - 100 U/ml	Food
ARG80818	Walnut	Plant	0.35 ppm	2 - 100 ng/ml	Food
ARG81036	Zearalenone	Other	0.043 ng/ml		Food
ARG80820	Zearalenone (Rapid/HS)	Fungi	5 ppb	0.64 - 74 µU/ml	Food



### Granulocytes



arigo Cat No.	Target	Tested Reactivity	Sensitivity	Range	Sample Type
ARG80905	BD-1 / $\beta$ Defensin-1	H	1.1 pg/ml	1.6 - 100 pg/ml	Serum, Plasma, Urine, Cell culture supernatants
ARG80903	BD-2 / $\beta$ Defensin-2	H	4 pg/ml	7.8-500 pg/ml	Serum, Plasma, Cell culture supernatants
ARG80902	BD-4 / $\beta$ Defensin-4	Ms	8 pg/ml	15.6-1000 pg/ml	Serum, Plasma, Cell culture supernatants
ARG80868	C5a	Rat	30 pg/ml	62.5-4000 pg/ml	Serum, Plasma, Cell culture supernatants
ARG80195	CRP	H	0.35 pg/ml	18 - 933 pg/ml	Serum, Plasma
ARG80194	FKBP1B	H	1 pg/ml	1.56-100 pg/ml	Serum, Plasma, Cell culture supernatants
ARG80143	G-CSF	Ms	15 pg/ml	31.25-2000 pg/ml	Serum, Plasma, Cell culture supernatants
ARG80122	GM-CSF	Rat	30 pg/ml	62.5-4000 pg/ml	Serum, Plasma, Cell culture supernatants
ARG80171	Granzyme B	H	1.6 pg/ml	0.25 - 50 mg/ml	Serum
ARG80502	IFN $\gamma$	H	0.15 pg/ml	0.31-20 pg/ml	Serum, Plasma, Cell culture supernatants
ARG80140	IgE	H	15 pg/ml	31.25-2000 pg/ml	Serum, Plasma, Cell culture supernatants
ARG80216	IgE	H	8 pg/ml	15.6-1000 pg/ml	Serum, Plasma, Cell culture supernatants
ARG80248	IgE	Ms	8 pg/ml	15.6-1000 pg/ml	Serum, Plasma, Cell culture supernatants
ARG80135	IgG (Total)	H	8 pg/ml	15.6-1000 pg/ml	Serum, Plasma, Cell culture supernatants
ARG80215	IgG (Total)	Ms	8 pg/ml	15.6-1000 pg/ml	Serum, Plasma, Cell culture supernatants
ARG80239	IgG1	H	1.5 pg/ml	3.125-200 pg/ml	Serum, Plasma, Cell culture supernatants
ARG80175	IgG4	H	2.1 pg/ml	0.1 - 10 ng/ml	Serum, Plasma, Cell culture supernatants
ARG80947	IgM	H	15 pg/ml	31.25-2000 pg/ml	Serum, Plasma, Cell culture supernatants
ARG80948	IgM	Ms	8 pg/ml	15.6-1000 pg/ml	Serum, Plasma, Cell culture supernatants
ARG81101	Immunoglobulin E	H	4 pg/ml	8-500 pg/ml	Serum, Plasma, Cell culture supernatants
ARG81102	Immunoglobulin G	H	8 pg/ml	15.6-1000 pg/ml	Serum, Plasma, Cell culture supernatants
ARG81103	Immunoglobulin G	Ms	12 pg/ml	23.44-1500 pg/ml	Serum, Plasma, Cell culture supernatants
ARG81105	Immunoglobulin G	H	8 pg/ml	15.6-1000 pg/ml	Serum, Plasma, Cell culture supernatants
ARG81106	Immunoglobulin G	Ms	8 pg/ml	15.6-1000 pg/ml	Serum, Plasma, Cell culture supernatants
ARG81104	Immunoglobulin M	Rat	8 pg/ml	15.6-1000 pg/ml	Serum, Plasma, Cell culture supernatants

arigo Cat No.	Target	Tested Reactivity	Sensitivity	Range	Sample Type
ARG80847	Inhibin A (heterodimer)	H	1 pg/ml	5 - 200 ng/ml	Serum, Plasma
ARG80849	Inhibin B Gen II (heterodimer)	H	2.6 pg/ml	4 - 300 nmol/l	Serum, Plasma
ARG80173	Perforin	H	20 pg/ml	39-2500 pg/ml	Serum, Plasma, Cell culture supernatants
ARG80507	PMN Elastase	H	0.2 ng/ml	15.6 - 1000 ng/ml	Plasma, Exudate, Bronchoalveolar lavage fluid, Cerebrospinal fluid
ARG80130	sCD40L	H	30 pg/ml	62.5-4000 pg/ml	Serum, Plasma, Cell culture supernatants
ARG80866	secretory IgA	H	1 µg/ml	5 - 100 µg/ml	Saliva, Serum, Urine, Milk
ARG80125	siCAM1	H	0.2 ng/ml	0.39-25 ng/ml	Serum, Plasma, Cell culture supernatants
ARG80182	Thrombopoietin (Tpo)	H	30 pg/ml	62.5-4000 pg/ml	Serum, Plasma, Cell culture supernatants
ARG80190	TL1A	H	15 pg/ml	31.25-2000 pg/ml	Serum, Plasma, Cell culture supernatants
ARG80160	TWEAK	H	15 pg/ml	31.25-2000 pg/ml	Serum, Plasma, Cell culture supernatants
ARG80134	VCAM1	H	15 pg/ml	31.25-2000 pg/ml	Serum, Plasma, Cell culture supernatants



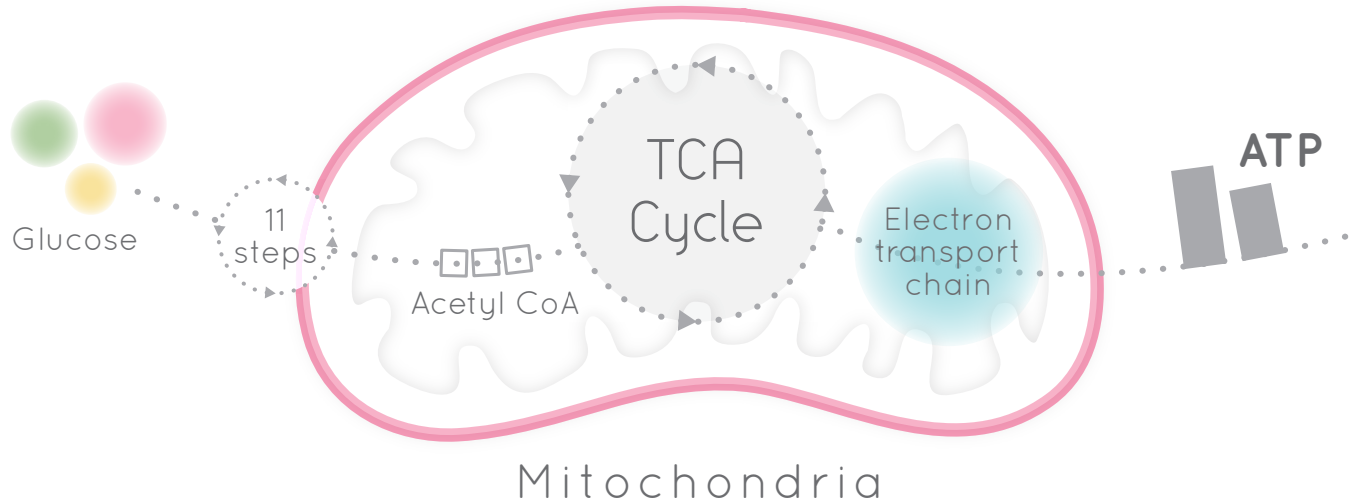


arigo Cat No.	Target	Tested Reactivity	Sensitivity	Range	Sample Type
ARG80508	Adenovirus IgA Ab	Other	1.04 U/ml	1 - 200 U/ml	Serum, Plasma
ARG80509	Adenovirus IgG Ab	Other	1.00 U/ml	1 - 150 U/ml	Serum, Plasma
ARG80510	Adenovirus IgM Ab	Other	1.08 U/ml	1 - 150 U/ml	Serum, Plasma
ARG80511	Ascaris lumbricoides IgG Ab	Other	diagn. >95%	Cut-off	Serum, Plasma
ARG80512	Aspergillus fumigatus IgA Ab	Other	1.14 U/ml	1 - 140 U/ml	Serum, Plasma
ARG80513	Aspergillus fumigatus IgG Ab	Other	1.08 U/ml	1 - 200 U/ml	Serum, Plasma
ARG80514	Aspergillus fumigatus IgM Ab	Other	1.04 U/ml	1 - 60 U/ml	Serum, Plasma
ARG80515	Bordetella pertussis IgA Ab	Other	1.00 U/ml	1 - 50 U/ml	Serum, Plasma
ARG80516	Bordetella pertussis IgG Ab	Other	0.98 U/ml	1 - 150 U/ml	Serum, Plasma
ARG80517	Bordetella pertussis IgM Ab	Other	1.00 U/ml	1 - 75 U/ml	Serum, Plasma
ARG81040	Bordetella pertussis toxin IgA Ab	H	97.3 % (diagn.)		Serum, Plasma
ARG81043	Bordetella pertussis toxin IgG Ab	H	0.43 IU/ml		Serum, Plasma
ARG81041	Bordetella pertussis toxin IgM Ab	H	94 % (diagn.)		Serum
ARG80519	Borrelia burgdorferi IgG Ab	Other	0.99 U/ml	10 - 150 U/ml	Serum, Plasma
ARG80520	Borrelia burgdorferi IgM Ab	Other	0.99 U/ml	10 - 150 U/ml	Serum, Plasma
ARG80521	Brucella abortus IgA Ab	Other	1.14 U/ml	1 - 200 U/ml	Serum, Plasma
ARG80522	Brucella abortus IgG Ab	Other	1.11 U/ml	1 - 150 U/ml	Serum, Plasma
ARG80523	Brucella abortus IgM Ab	Other	1.03 U/ml	1 - 150 U/ml	Serum, Plasma
ARG80524	Candida albicans IgA Ab	Other	0.97 U/ml	1 - 100 U/ml	Serum, Plasma
ARG80525	Candida albicans IgG Ab	Other	1.11 U/ml	1 - 150 U/ml	Serum, Plasma
ARG80526	Candida albicans IgM Ab	Other	1.07 U/ml	1 - 150 U/ml	Serum, Plasma
ARG80527	Chagas (Trypanosoma cruzi) IgG Ab	Other	diagn. 99%	Cut-off	Serum, Plasma
ARG80528	Chikungunya Virus IgG Ab capture	Other	diagn. > 90 %	Cut-off	Serum, Plasma
ARG80529	Chikungunya Virus IgM Ab $\mu$ -capture	Other	diagn. > 90 %	Cut-off	Serum, Plasma
ARG80530	Chlamydia pneumoniae IgA Ab	Other	diagn. 88.9 %	Cut-off	Serum, Plasma
ARG80531	Chlamydia pneumoniae IgG Ab	Other	0.94	Cut-off	Serum

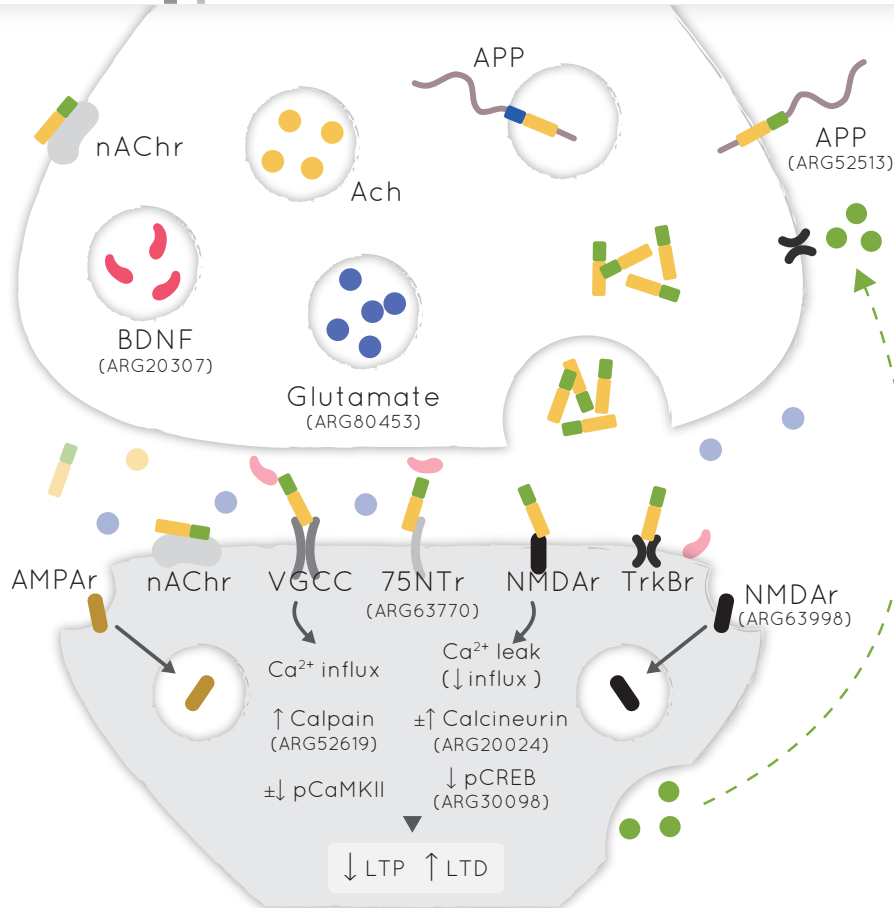
arigo Cat No.	Target	Tested Reactivity	Sensitivity	Range	Sample Type
ARG80532	Chlamydia pneumoniae IgM Ab	Other	diagn. 83.3%	Cut-off	Serum
ARG80533	Chlamydia trachomatis IgA Ab	Other	diagn. >95%	Cut-off	Serum
ARG80534	Chlamydia trachomatis IgG Ab	Other	diagn. >95%	Cut-off	Serum
ARG80535	Chlamydia trachomatis IgM Ab	Other	diagn. 83.3%	Cut-off	Serum
ARG80536	Cytomegalo Virus (CMV) IgG Ab	Other	1.15 U/ml	1 - 90 U/ml	Serum, Plasma
ARG80537	Cytomegalo Virus (CMV) IgM Ab	Other	1.03 U/ml	1 - 120 U/ml	Serum, Plasma
ARG80538	Dengue Virus IgG Ab	Other	diagn. >90%	Cut-off	Serum, Plasma
ARG80539	Dengue Virus IgM Ab	Other	diagn. 90 %	Cut-off	Serum, Plasma
ARG80540	Diphtheria IgG Ab	Other	0.004 IU/ml	0.01 - 1.0 IU/ml	Serum, Plasma
ARG80541	EBV EA (Early Antigen) IgA Ab	Other	1.1 U/ml	1 - 200 U/ml	Serum
ARG80542	EBV EA (Early Antigen) IgG Ab	Other	1.37 U/ml	1 - 150 U/ml	Serum, Plasma
ARG80543	EBV EA (Early Antigen) IgM Ab	Other	1.10 U/ml	1 - 200 U/ml	Serum, Plasma
ARG80544	EBV EBNA1 IgA Ab	Other	1.01 U/ml	1 - 125 U/ml	Serum, Plasma
ARG80545	EBV EBNA1 IgG Ab	Other	1.29 U/ml	1 - 200 U/ml	Serum, Plasma
ARG80546	EBV EBNA1 IgM Ab	Other	0.86 U/ml	1 - 150 U/ml	Serum, Plasma
ARG80547	EBV VCA IgA Ab	Other	1.01 U/ml	1 - 125 U/ml	Serum, Plasma
ARG80548	EBV VCA IgG Ab	Other	1.29 U/ml	1 - 200 U/ml	Serum, Plasma
ARG80549	EBV VCA IgM Ab	Other	0.86 U/ml	1 - 150 U/ml	Serum, Plasma
ARG80550	Echinococcus granulosus IgG Ab	Other	1.11 U/ml	1 - 200 U/ml	Serum, Plasma
ARG81042	Entamoeba histolytica antigen	Protozoa			Stool
ARG80551	Entamoeba histolytica IgG Ab	Other	diagn. >95%	Cut-off	Serum, Plasma
ARG80552	FSME (TBEV) IgG Ab	Other	3.2 U/ml	10 - 1000 U/ml	Serum, Plasma
ARG80553	FSME (TBEV) IgM Ab	Other	1.37 U/ml	10 - 1000 U/ml	Serum, Plasma
ARG80554	Giardia lamblia	Other	n.d	qualitative	Stool
ARG80555	Haemophilus Influenzae B IgG Ab	Other	0.1 µg/ml	0.1 - 10.0 µg/ml	Serum, Plasma
ARG80556	Helicobacter pylori Ag (stool)	Other	0.05 µg/ml	0.1 - 1.0 µg/ml	Stool

arigo Cat No.	Target	Tested Reactivity	Sensitivity	Range	Sample Type
ARG80558	Helicobacter pylori IgA Ab	Other	1.04 U/ml	1 - 200 U/ml	Serum, Plasma
ARG80559	Helicobacter pylori IgG Ab	Other	1.16 U/ml	1 - 150 U/ml	Serum, Plasma
ARG80560	Helicobacter pylori IgM Ab	Other	1.03 U/ml	1 - 150 U/ml	Serum, Plasma
ARG80565	Herpes simplex 1 / 2 IgG Ab	Other	1.20 U/ml	1 - 200 U/ml	Serum, Plasma
ARG80566	Herpes simplex 1 / 2 IgM Ab	Other	1.12 U/ml	1 - 100 U/ml	Serum, Plasma
ARG80562	Herpes simplex 1 IgG Ab	Other	1.1 U/ml	1 - 125 U/ml	Serum, Plasma
ARG80563	Herpes simplex 1 IgM Ab	Other	1.06 U/ml	1 - 100 U/ml	Serum, Plasma
ARG80568	Herpes simplex 2 IgG Ab	Other	0.98 U/ml	1 - 150 U/ml	Serum, Plasma
ARG80569	Herpes simplex 2 IgM Ab	Other	1.04 U/ml	1 - 150 U/ml	Serum, Plasma
ARG80570	Influenza A IgA Ab	Other	1.29 U/ml	1 - 150 U/ml	Serum, Plasma
ARG80571	Influenza A IgG Ab	Other	1.09 U/ml	1 - 150 U/ml	Serum, Plasma
ARG80572	Influenza A IgM Ab	Other	1.17 U/ml	1 - 150 U/ml	Serum, Plasma
ARG80573	Influenza B IgA Ab	Other	1.38 U/ml	1 - 150 U/ml	Serum, Plasma
ARG80574	Influenza B IgG Ab	Other	1.07 U/ml	1 - 175 U/ml	Serum, Plasma
ARG80575	Influenza B IgM Ab	Other	1.19 U/ml	1 - 250 U/ml	Serum, Plasma
ARG80576	JE (Japanese Encephalitis) IgG Ab	Other	n.d	qualitative	Serum
ARG80577	JE (Japanese Encephalitis) IgM Ab capture	Other	diagn. 100 %	qualitative	Serum
ARG80578	Legionella IgG Ab, IgM Ab, IgA Ab	Other	relative 95%	Cut-off	Serum
ARG80579	Leishmania infantum IgG Ab	Other	diagn. 91 %	Cut-off	Serum, Plasma
ARG80582	Measles IgG Ab	Other	1.35 U/ml	1 - 250 U/ml	Serum, Plasma
ARG80583	Measles IgM Ab	Other	1.07 U/ml	1 - 150 U/ml	Serum, Plasma
ARG80585	Mumps IgG Ab	Other	1.28 U/ml	1 - 150 U/ml	Serum, Plasma
ARG80586	Mumps IgM Ab	Other	1.23 U/ml	1 - 125 U/ml	Serum, Plasma
ARG80588	Mycobacterium tuberculosis IgG Ab	Other	1.09 U/ml	1 - 150 U/ml	Serum, Plasma
ARG80589	Mycobacterium tuberculosis IgM Ab	Other	1.22 U/ml	1 - 100 U/ml	Serum, Plasma
ARG80590	Mycoplasma pneumoniae IgA Ab	Other	1.10 U/ml	1 - 125 U/ml	Serum, Plasma

arigo Cat No.	Target	Tested Reactivity	Sensitivity	Range	Sample Type
ARG80591	Mycoplasma pneumoniae IgG Ab	Other	1.12 U/ml	1 - 100 U/ml	Serum, Plasma
ARG80592	Mycoplasma pneumoniae IgM Ab	Other	1.22 U/ml	1 - 125 U/ml	Serum, Plasma
ARG80593	Parainfluenza 1,2&3 IgA Ab	Other	0.96 U/ml	1 - 100 U/ml	Serum, Plasma
ARG80594	Parainfluenza 1,2&3 IgG Ab	Other	1.04 U/ml	1 - 125 U/ml	Serum, Plasma
ARG80595	Parainfluenza 1,2&3 IgM Ab	Other	1.18 U/ml	1 - 200 U/ml	Serum, Plasma
ARG80596	Parvovirus B19 IgG Ab	Other	diagn. 93%	cut-off standard	Serum
ARG80597	Parvovirus B19 IgM Ab	Other	diagn. 100%	cut-off standard	Serum
ARG80598	Poliomyelitis virus IgG Ab	Other	n.d	0.1 - 5.0 IU/ml	Serum, Plasma
ARG80599	Respiratory syncytial virus (RSV) IgA Ab	Other	1.70 U/ml	1 - 100 U/ml	Serum, Plasma
ARG80600	Respiratory syncytial virus (RSV) IgG Ab	Other	1.22 U/ml	1 - 150 U/ml	Serum, Plasma
ARG80601	Respiratory syncytial virus (RSV) IgM Ab	Other	1.70 U/ml	1 - 150 U/ml	Serum, Plasma
ARG80604	Rotavirus AG	Other	n.d	0 - 500 IU/ml	Stool
ARG80605	Rubella IgG Ab	Other	0.29 IU/ml	1 - 90 U/ml	Serum, Plasma
ARG80606	Rubella IgM Ab	Other	1.24 U/ml	Cut-off	Serum, Plasma
ARG80607	Schistosoma mansoni IgG Ab	Other	diagn. 87 %	Cut-off	Serum, Plasma
ARG80608	Strongyloides IgG Ab	Other	n.d	Cut-off	Serum
ARG80609	Taenia solium IgG Ab	Other	diagn. 93.8 %	0.1 - 5.0 IU/ml	Serum, Plasma
ARG80610	Tetanus Toxoid IgG Ab	Other	0.004 IU/ml	cut-off	Serum, Plasma
ARG80611	Toxocara canis IgG Ab	Other	> 98%	0 - 250 IU/ml	Serum
ARG80612	Toxoplasma IgG Ab	Other	0.58 IU/ml	1 - 120 U/ml	Serum, Plasma
ARG80613	Toxoplasma IgM Ab	Other	1.20 U/ml	Cut-off	Serum, Plasma
ARG80614	Treponema pallidum (Syphilis) IgG Ab	Other	n.d	Cut-off	Serum
ARG80615	Treponema pallidum (Syphilis) IgM Ab	Other	n.d	Cut-off	Serum
ARG80616	Trichinella spiralis IgG Ab	Other	diagn. > 95 %	1 - 150 U/ml	Serum, Plasma
ARG80620	Varicella zoster IgG Ab	Other	1.01 U/ml	1 - 150 U/ml	Serum, Plasma
ARG80621	Varicella zoster IgM Ab	Other	1.08 U/ml	1 - 200 U/ml	Serum, Plasma
ARG80622	Yersinia enterocolitica IgA Ab	Other	1.02 U/ml	1 - 180 U/ml	Serum, Plasma
ARG80623	Yersinia enterocolitica IgG Ab	Other	1.92 U/ml	1 - 110 U/ml	Serum, Plasma
ARG80624	Yersinia enterocolitica IgM Ab	Other	1.02 U/ml	7.2 - 564 pg/ml	Serum, Plasma

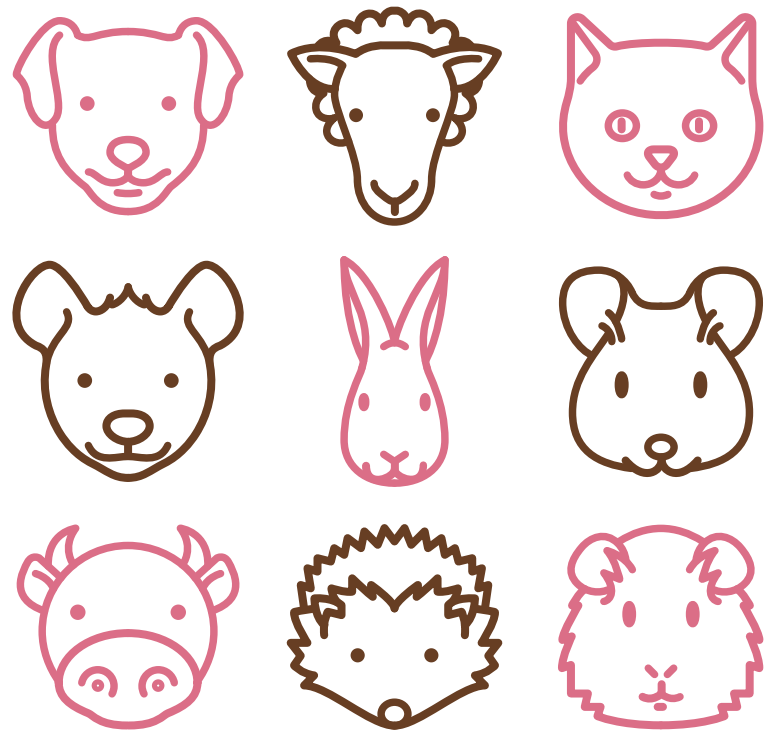


arigo Cat No.	Target	Tested Reactivity	Sensitivity	Range	Sample Type
ARG80911	8-OHdG		0.59 ng/ml	3.9 - 250 pg/ml	Plasma/Serum, Culture Media Samples, Cell Lysates, Tissue Samples, Saliva
ARG80912	8-OHdG		30 pg/ml	0.3 - 30 ng/ml	
ARG80958	ACE	H	10.0 pg/ml	25 - 250 nmol/l	Biological fluids
ARG80959	ACE2	H	10.0 pg/ml	0.5 - 10 ng/ml	Serum, Plasma, Body fluids, Tissue lysate, Cell culture supernatants
ARG80968	ACE2	Rat	0.1 U/L	0.05 - 1.5 ng/ml	Biological fluids
ARG80131	Adiponectin	H	0.08 ng/ml	0.15-10 ng/ml	Serum, Plasma, Cell culture supernatants
ARG81126	Albumin	Rat	6.25 ng/ml		Biological fluids
ARG80965	Albumin	Ms	0.87 ng/ml	1.5 - 24 ppb	Plasma, Serum, Urine, other biological fluids
ARG81100	Albumin	H	0.33 ng/ml	1 - 500 ng/ml	Plasma, Serum, Urine, Cell culture media
ARG80960	Angiotensin 1-7	H	2.0 pg/ml	6 - 62 mg/dl	Biological fluids
ARG80961	Angiotensin II	H	2.0 pg/ml	10 - 2560 pg/ml	Biological fluids
ARG80132	apoA1	H	1.5 ng/ml	3.125-200 ng/ml	Serum, Plasma, Cell culture supernatants
ARG81124	Bovine Serum Albumin	Bov	15 ng/ml		Biological fluids
ARG81125	Bovine Serum Albumin (HS)	Bov	0.5 ng/ml		Biological fluids
ARG80782	C Peptide	H	0.064 ng/ml	10 - 10,000 pg/ml	Serum, Plasma, Urine
ARG80928	Cu/Zn-SOD	H	40 pg/ml	125 - 8000 pg/ml	Serum, Plasma, Cell culture supernatants
ARG80945	FABP4	H	0.8 ng/ml	50-250nmol/l	Serum, Plasma, Cell culture supernatants
ARG80224	IGF1	Ms	50 pg/ml	93.75-6000 pg/ml	Serum, Plasma, Cell culture supernatants
ARG80157	IGF-BP1	H	25 pg/ml	47-3000 pg/ml	Serum, Plasma, Cell culture supernatants
ARG80488	Insulin	H	1.76 µIU/ml	6.25 - 100 µIU/ml	Serum, Plasma
ARG80126	Leptin	H	8 pg/ml	15.6-1000 pg/ml	Serum, Plasma, Cell culture supernatants
ARG80831	Leptin	H	0.2 ng/ml	0.03 - 10 µg/ml	Serum, Plasma, Urine, Saliva
ARG80941	NGAL/Lipocalin-2	H	15 pg/ml	1.56 - 100 pg/ml	Serum, Plasma, Cell culture supernatants
ARG80783	Proinsulin	H	0.5 pmol/l	0.4 - 10 ppm	Serum, Plasma
ARG80118	RELM β	H	4 pg/ml	7.8-500 pg/ml	Serum, Plasma, Cell culture supernatants
ARG81130	Sclerostin (SOST)	H	15 pg/ml		Serum, Plasma, Cell culture supernatants
ARG80944	Thioredoxin-1/Trx-1	H	30 pg/ml	0.02 - 1.5 µg/l	Serum, Plasma, Cell culture supernatants



arigo Cat No.	Target	Tested Reactivity	Sensitivity	Range	Sample Type
ARG80133	$\beta$ NGF	H	4 pg/ml	7.8-500 pg/ml	Serum, Plasma, Cell culture supernatants
ARG80939	$\beta$ -Amyloid (1 - 42)	Ms, Rat	2 pg/ml	1.56 - 100 pg/ml	Cell & tissue lysate, body fluids
ARG81143	$\beta$ -Amyloid (1 - 42)	Hu	2 pg/ml	3.9 - 250 pg/ml	Cell & tissue lysate, body fluids
ARG80249	CNTF	Rat	15 pg/ml	31.25-2000 pg/ml	Serum, Plasma, Cell culture supernatants
ARG80954	CNTF	H	0.07 ng/ml	6.3 - 100 U/ml	Blood, Tissue, CSF extraction
ARG80953	GDNF	H	< 4 pg/ml	0.25 - 64 ng/ml	Serum, Plasma, Cell culture supernatants
ARG80934	Neuropeptide Y	H, Ms, P, Rat	0.09 ng/ml	15.6 - 500 pg/ml	Blood, Plasm, Tissue, CSF extraction
ARG80186	Neuroserpin	H	30 pg/ml	62.5-4000 pg/ml	Serum, Plasma, Cell culture supernatants
ARG81122	Neurotensin	H, Ms, Rat	0.2 ng/ml	0.2 - 3.51 ng/ml	Blood, Plasma, Tissue, CSF extraction





arigo Cat No.	Target	Tested Reactivity	Sensitivity	Range	Sample Type
ARG80683	Adiponectin	Rat	< 0.081 ng/ml	1.6 - 133.3 ng/ml	Serum, Plasma
ARG80726	Adiponectin	Ms	< 0.008 ng/ml	31.3 - 2000 pg/ml	Serum, Plasma
ARG80980	$\beta$ -Amyloid (1 - 40)	Ms, Rat	0.28 pg/ml	0.04 - 4 ng/ml	Brain extract, Cell culture supernatants, Serum, Plasma
ARG80981	$\beta$ -Amyloid (1 - 42)	Ms, Rat	0.05 pg/ml	0.05 - 3.5 ng/ml	Serum, Plasma
ARG81013	BLV / Bovine Leukemia Virus p24 Ab	Bov			Serum
ARG81014	BLV / Bovine Leukemia Virus p24/gp51 Ab	Bov			Serum
ARG81015	BLV / Bovine Leukemia Virus p24/gp51 Ab	Bov			Food
ARG81016	Bovines Brucella IgG Ab	Bov			Serum, Milk
ARG80994	Canine Heartworm	Other		6.25 - 400 ng/ml	Serum, Plasma
ARG80998	Canine Rabies Virus IgG Ab	Dog		62.5 - 4000 pg/ml	Serum, Plasma
ARG80999	Canine Rabies Virus IgM Ab	Dog		0.2 - 25 $\mu$ g/ml	Serum, Plasma
ARG80984	CAV / Canine Adenovirus IgG Ab	Dog		12.5 - 150 %	Serum, Plasma
ARG80985	CCV / Canine Corona Virus IgG Ab	Dog		23 - 1500 pg/ml	Serum, Plasma
ARG80986	CCV / Canine Corona Virus IgM Ab	Dog		Qualitative	Serum, Plasma
ARG80987	CDV / Canine Distemper Virus IgG Ab	Dog		Qualitative	Serum, Plasma
ARG80988	CDV / Canine Distemper Virus IgM antibodies	Dog		Qualitative	Serum, Plasma
ARG80989	CHV / Canine Herpes Virus IgG antibodies	Dog		25 - 150 IU/ml	Serum, Plasma
ARG80652	Corticosterone rat / mouse	Ms, Rat	6.1ng/ml	5 - 1000 ng/ml	Serum, Plasma
ARG80689	C-Peptide	Rat	0.093 ng/ml	31.3 - 2000 pg/ml	Serum, Plasma
ARG80992	CPV / Canine Parvo Virus antigen	Virus		15 - 500 ng/ml	Stool
ARG80990	CPV / Canine Parvo Virus IgG Ab	Dog		0.1 - 25.6 ng/ml	Serum, Plasma
ARG80991	CPV / Canine Parvo Virus IgM Ab	Dog		0 - 100 ng/ml	Serum, Plasma
ARG80690	CRP	Rat	2.5 ng/mL	0.5 - 18 ng/ml	Serum
ARG80729	CRP	Rat	2.5 ng/mL	1.56 - 50 ng/ml	Serum, Plasma, Urine, Culture supernatant, Tissue extract, Synovial fluid

arigo Cat No.	Target	Tested Reactivity	Sensitivity	Range	Sample Type
ARG80993	CRP	Dog	3.6 ng/ml	2.5 - 50 ng/ml	Serum, Plasma, Urine, Culture supernatant, Tissue extracts, Synovial fluid
ARG80755	Estradiol	Rat	2.5 pg/ml	7.5 - 573 pg/ml	Serum
ARG80653	Estrone3-Sulfate equine	Hrs	0.14 ng/ml	0.156 - 10 ng/ml	Serum
ARG81003	FCV / Feline Calici Virus Ab	Cat		50 - 4000 pg/ml	Serum, Plasma
ARG81005	Feline Chlamydia (psittaci/trachomatis) Ab	Cat		62.5 - 4000 pg/ml	Serum, Plasma
ARG81004	Feline Corona Virus / FCoV Ab	Cat		15.6 - 1000 pg/ml	Serum, Plasma, Ascetic fluid
ARG81007	FeLV-gp70 (Leukaemia Virus) Ab	Cat			Serum, Plasma
ARG81006	FeLV-p27 (Leukaemia Virus)	Virus			Serum, Plasma
ARG81008	FHV / Feline Herpes Virus Ab	Cat			Serum, Plasma
ARG81083	Fibrinogen (total)	P	0.6 ng/ml	1.56 - 800 ng/ml	Serum, Plasma
ARG81009	FIV p24/p17 Ab	Cat			Serum, Plasma
ARG81010	FPV / Feline Parvovirus Ab	Cat			Serum, Plasma
ARG80700	IFN $\gamma$	Rat	9.9 pg/ml	31 - 2000 pg/ml	Serum, Cell culture supernatants
ARG80703	IGFBP2	Rat	10 pg/ml	see on vial labels	Serum
ARG80704	IGFBP3	Rat	18 pg/ml	31 - 2000 pg/ml	Serum, Cell lysates
ARG80702	IGF-I	Ms, Rat	<0.029 ng/ml	78 - 5000 pg/ml	Serum
ARG80712	IL-1 $\beta$	Rat	4 pg/ml	31 - 2000 pg/ml	Serum, Cell culture supernatants
ARG80713	IL2	Rat	11 pg/ml	25 - 1600 pg/ml	Serum, Cell culture supernatants
ARG80714	IL6	Rat	12 pg/ml	0.025 - 1 ng/ml	Serum, Cell culture supernatants
ARG80746	IL6	Ms	n.d	5 - 1,000 IU/ml	Serum, Plasma, Cell culture supernatants
ARG81017	Infectious Bovine Rhinotracheitis / BHV-1 Ab	Bov			Serum, Plasma
ARG80655	Insulin	Rat	0.093 ng/ml	0.4 - 100 ng/ml	Plasma, Serum
ARG80741	Insulin	Ms	0.10 $\mu$ g/l	5 - 1280 pg/ml	Serum, Plasma
ARG80995	Insulin	Dog	0.01 $\mu$ g/l	0.25 - 4 ng/ml	Serum, Plasma
ARG81001	Insulin	Hrs	0.01 ng/ml	0.03 - 4 $\mu$ M	Serum, Plasma

arigo Cat No.	Target	Tested Reactivity	Sensitivity	Range	Sample Type
ARG81011	Insulin	Cat	5 ng/l		Serum, Plasma
ARG81018	Insulin	Bov	0.025 µg/l		Serum, Plasma
ARG81020	Insulin	Sheep	0.025 µg/l		Serum, Plasma
ARG80706	Insulin (high range)	Rat	1.5 µg/l	63 - 2000 pg/ml	Serum, Plasma
ARG80715	Leptin	Ms, Rat	10 pg/ml	1.56 - 25 ng/ml	Serum, Plasma
ARG81019	Leptospira hardjo Ab	Bov			Serum, Milk
ARG80748	Osteocalcin	Ms	1 ng/mL	5 - 120 ng/ml	Serum, Plasma, Cell culture supernatants
ARG81049	PAI-1 (active)	Dog		0.2 - 100 ng/ml	Plasma
ARG81055	PAI-1 (active)	P	0.046 ng/ml	0.05 - 50 ng/ml	Plasma
ARG81050	PAI-1 (total)	Dog	0.138 ng/ml	0.2 - 100 ng/ml	Plasma
ARG81056	PAI-1 tPA complex	P	0.178 ng/ml	0.2 - 200 ng/ml	Plasma, Serum, Cell culture media, Tissue extracts
ARG81002	PMSG / Pregnant Mare Serum Gonadotropin	Hrs		2.5 - 160 ng/ml	Serum, Plasma
ARG80657	Progesterone	Ms, Rat	0.04 ng/ml	2.5-80 ng/ml	Serum, Plasma
ARG80720	Proinsulin	Rat	3pmol/l	0.188 - 6.9 µg/l	Serum, Plasma, Cell culture supernatants
ARG80658	Prolactin	Dog	0.4 ng/ml	5-80 ng/ml	Serum
ARG80660	Prolactin	Rat	0.6 ng/ml	0.1 - 25 ng/ml	Serum
ARG81000	T4 / Thyroxine (total)	Dog		62.5 - 8000 nM	Serum, Plasma
ARG81012	T4 / Thyroxine (total)	Cat			Serum, Plasma
ARG80662	Testosterone	Ms, Rat	0.066 ng/ml	0.2 - 5.2 ng/ml	Serum, Plasma
ARG81066	tPA (active)	P	0.018 ng/ml	0.02 - 10 ng/ml	Plasma
ARG80663	TSH	Dog	0.01 ng/ml	2.5 - 80 ng/ml	Serum, Plasma
ARG80664	TSH	Rat	0.1 ng/ml	0.25 - 10 ng/ml	Serum

#### Tested Reactivity:

**H:**Human, **Hrs:**Horse, **P:**Pig, **Ms:**Mouse, **Mk:**Monkey, **Bov:**Bovine, **Chk:**Chicken, **R. Mk:**Rhesus monkey

# nuts about antibodies

No. 22, Lane 227 Gongyuan Road, Hsinchu City 300 Taiwan  
E : [info@arigobio.com](mailto:info@arigobio.com) / T : +886 (3) 5621738 / F : +886 (3) 561 3008



Phone : +886 (3) 5621738 / E-mail : [info@arigobio.com](mailto:info@arigobio.com)

---

[www.arigobio.com](http://www.arigobio.com)

