



DUO & PANEL



for more information
please visit our website

Catalog for Antibody Duos
and Antibody Panels

CONTENTS

02 About **origo**

03 Milestones

04 Non-apoptotic cell death

Autophagy
Ferroptosis / Oxytosis
Pyroptosis

08 Cancer

Epithelial-mesenchymal transition (EMT)
Tumor immune microenvironment (TIME)

10 Cardiovascular research

Angiogenesis
Endothelial to mesenchymal transition (EndMT)
eNOS

12 Immunology

Inflammation
Inflammasome
Inflammatory cells
TCR signaling

16 Metabolism

17 Neuroscience

Neural cells
Neurodegeneration

20 Signaling

Akt-mTOR pathway
FAK-Src pathway
JAK-STAT pathway
MAPK pathway
NFkB pathway
DNA damage response

Antibody Host:



Rabbit



Mouse



Rat



Goat



Chicken

DUO & PANEL

About arigo

Have you noticed a **squirrel** hidden in the logo of arigo? arigo Biolaboratories use the squirrel as a symbol and aim to provide quality **antibodies**, antibody duos / panels, and ELISA kits to facilitate scientific research. Our specialty **antibody duos** and antibody **panels** are smart solutions to make research easy and economic. arigo also offers diverse **ELISA kits** to meet the needs in the emerging research world.

Excellence

Offer smart solutions (Ab duos / panels / ELISA kits) to facilitate experiments and research.

Nuts about antibodies

Only the best are offered.
Only the smartest are accomplished.



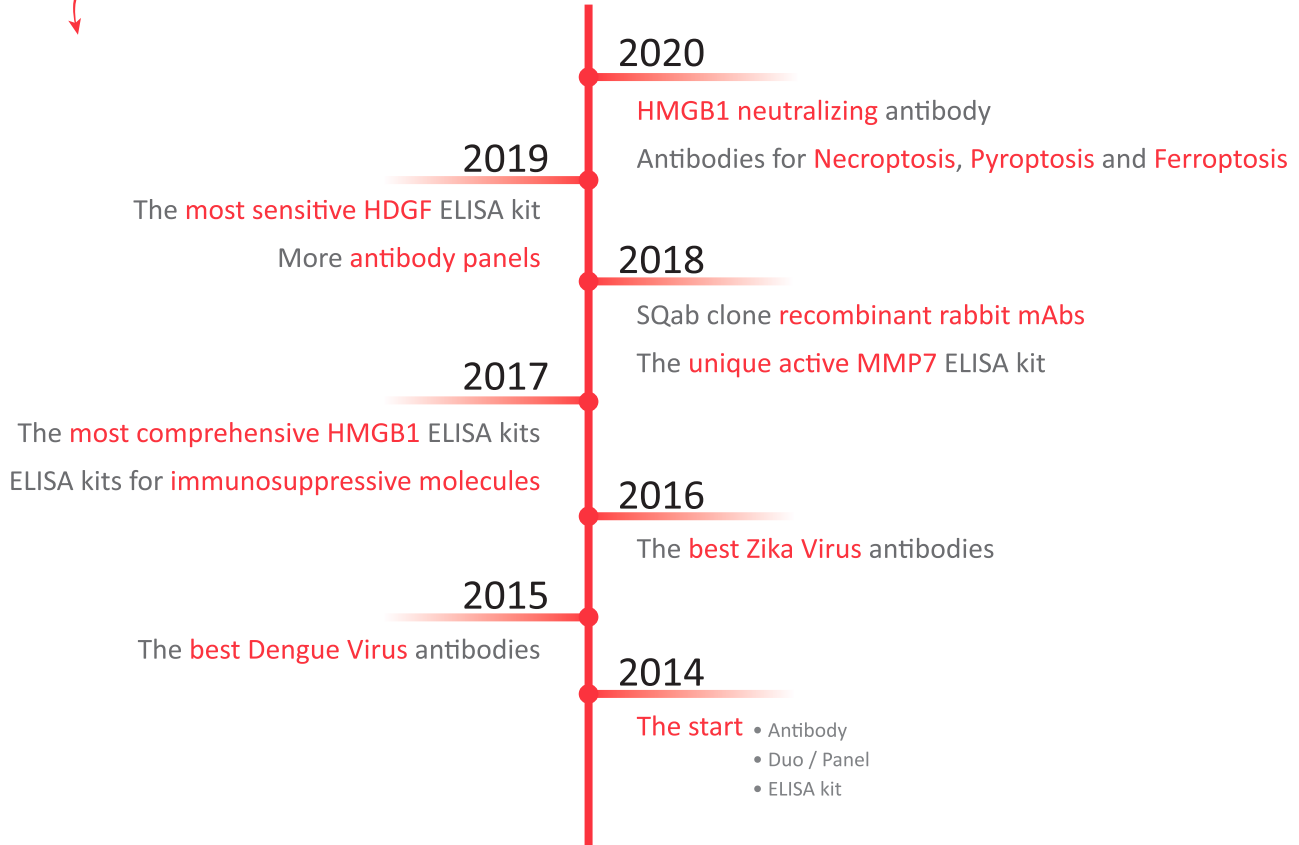
Responsiveness

Follow the research frontier and bring out cutting edge research solutions.

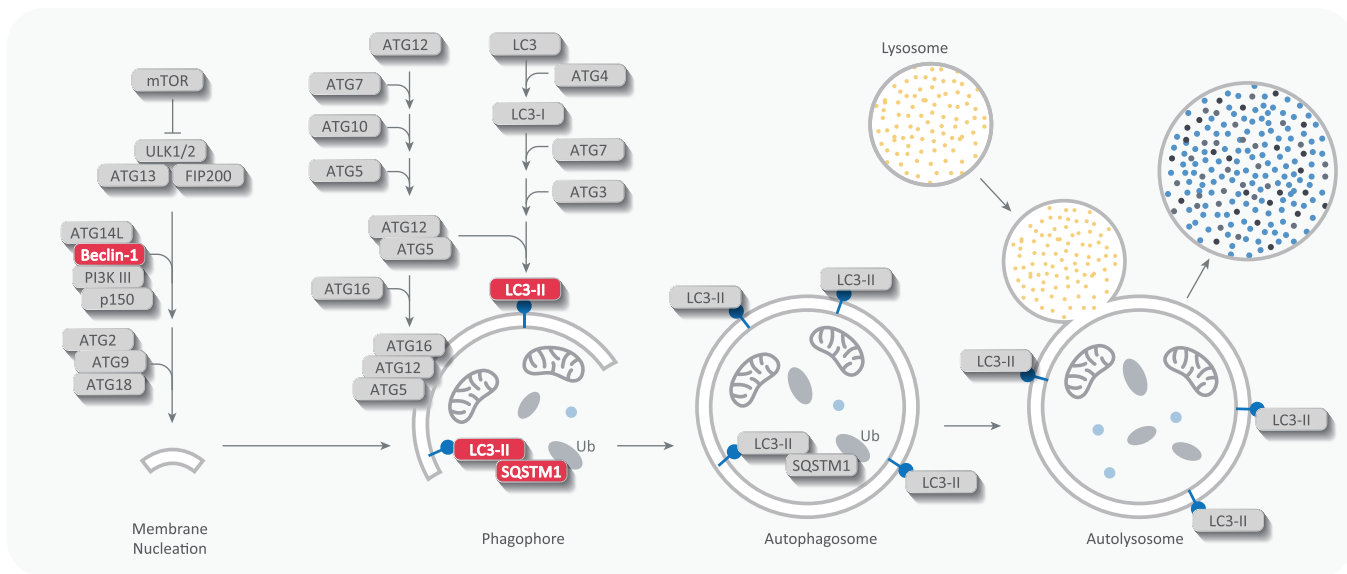
Quality

Extensively validate antibodies to provide specific and reliable products.

Milestones



Autophagy



Latest citations

LC3A and LC3B Antibody Duo (ARG30273)

Li et al., (2019) Otol Neurotol. 40(10):e993-e998. (IHC-P, WB / Hu)

Beclin-1 antibody (ARG65614)

Li et al., (2019) Otol Neurotol. 40(10):e993-e998. (WB / Hu)

LC3B antibody (ARG55799)

Qin et al., (2019) Front Cell Dev Biol. 7:286. (IHC-P / Pig)

Huang et al., (2019) Int J Mol Med. 44(6):2065-2076. (WB, ICC/IF / Ms)

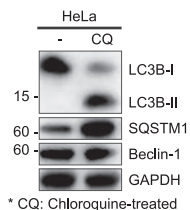
SQSTM1 antibody (ARG55040)

Tseng et al., (2019) Phytother Res. 33(4):1199-1207. (WB / Hu)

Autophagy Antibody Panel (ARG30321)

Ideal for detecting and studying the regulation of autophagy

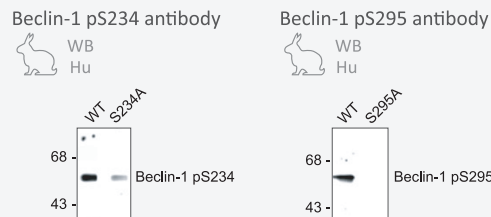
- Includes autophagy markers **LC3B** and **SQSTM1** antibodies
- Includes antibody against the key regulator **Beclin-1**
- Includes **loading control** antibody
- Works on **human, mouse, and rat** samples



Component	Reactivity	Application
LC3B antibody	Hu, Ms, Rat, Pig	ICC/IF, IHC-P, WB
SQSTM1 antibody	Hu, Ms, Rat	ICC/IF, IHC-P, IP, WB
Beclin-1 antibody	Hu, Ms, Rat	IHC-P, WB
GAPDH antibody [SQab1878]	Hu, Ms, Rat, Bv, Ck, Mk, Pig, Xl, Zfsh	FACS, ICC/IF, IHC-P, IP, WB
anti-Rabbit IgG antibody (HRP)	Rb	ELISA, IHC-P, WB

Phospho-Beclin-1 Antibody Duo (pS234, pS295) (ARG30094)

Ideal for studying autophagy suppression



LC3A and LC3B Antibody Duo (ARG30273)

LC3A antibody

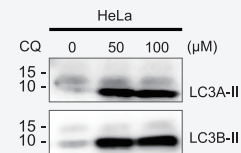
ICC/IF, IHC-P, WB

Hu, Ms, Rat

LC3B antibody

ICC/IF, IHC-P, WB

Hu, Ms, Rat, Pig



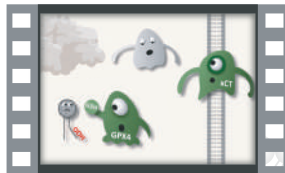
Ferroptosis / Oxytosis

Ferroptosis / Oxytosis Antibody Panel (ARG30337)

Ideal for studying ferroptosis in cancer cells and oxytosis in neuronal cells

- Includes the **molecular markers** of ferroptosis and oxytosis
- Includes the marker of **lipid peroxidation**
- Works on **human, mouse, and rat** samples

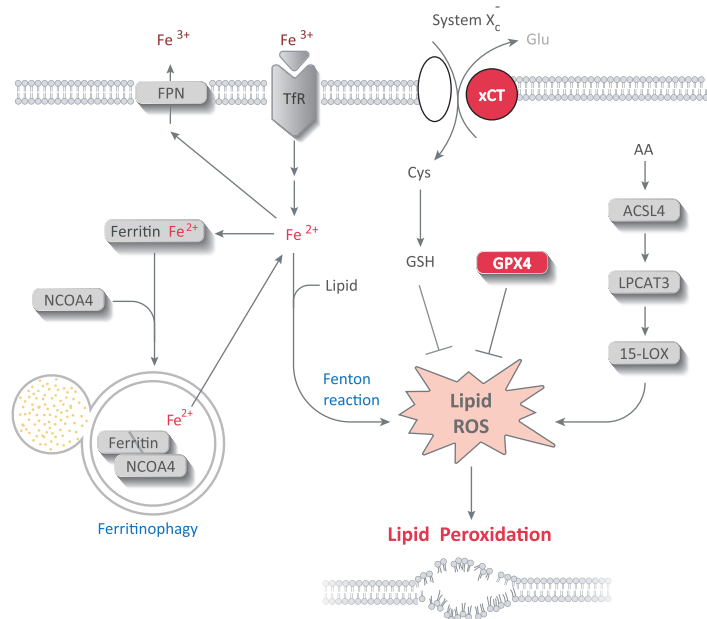
Component	Reactivity	Application
GPX4 antibody	Hu, Ms, Rat	ICC/IF, IHC-P, WB
xCT antibody	Hu, Ms, Rat	IP, WB
4-HNE antibody [12F7]		ELISA, ICC/IF, WB



Ferroptosis



 arigo
minifilm



Pyroptosis

Pyroptosis Antibody Panel (ARG30330)

Ideal for studying canonical pyroptosis pathway

- Includes the antibodies against **Caspase-1**, **GSDMD**, and **IL-1 β**
- Detects both **pro-** and **cleaved** forms of the key proteins
- Includes **loading control** antibody
- Works on **human** and **mouse** samples

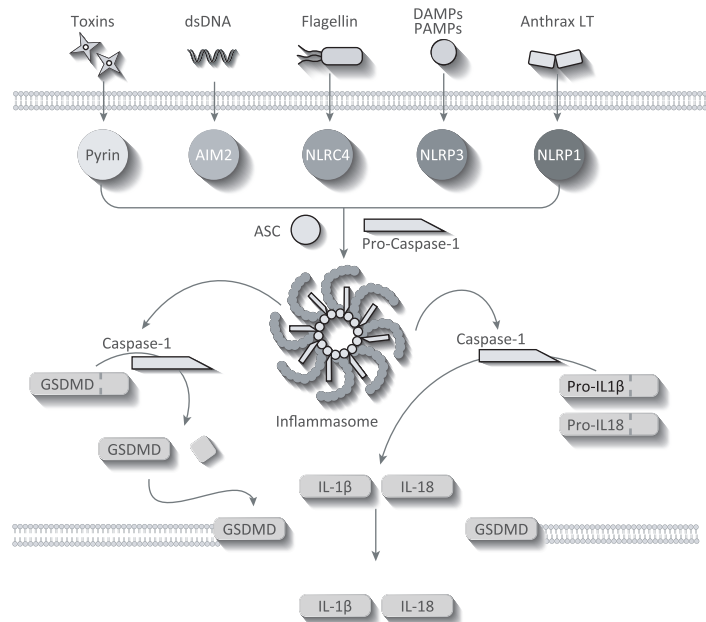
Component	Reactivity	Application
Caspase-1 antibody	Hu, Ms	ICC/IF, IHC-P, IP, WB
GSDMD antibody	Hu, Ms, Rat	ICC/IF, WB
IL-1 β antibody [SQab1748]	Hu, Ms	ELISA, FACS, ICC/IF, IHC-P, WB
β -Tubulin antibody [BT7R]	Hu, Ms, Rat, Ck, Mk, Rb	ELISA, ICC/IF, WB



Inflammasome & Pyroptosis



arigo
minifilm



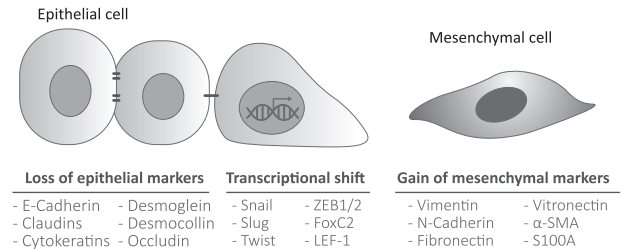
• **Inflammasome Antibody Panels** see p13

Epithelial-mesenchymal transition (EMT)

EMT Marker Antibody Panel (ARG30320)

- Includes **epithelial marker** E-Cadherin antibody
- Includes **mesenchymal** markers Vimentin and N-Cadherin antibodies
- Includes **loading control** antibody
- Outstanding antibody performance

Component	Reactivity	Application
E-Cadherin antibody [SQab1717]	Hu	IHC-P, WB
Vimentin antibody [SQab1721]	Hu, Ms	FACS, ICC/IF, IHC-P, IP, WB
N-Cadherin antibody	Hu, Ms, Rat, Sh	ELISA, FACS, ICC/IF, IHC-P, IP, WB
GAPDH antibody [SQab1878]	Hu, Ms, Rat, Bv, Ck, Mk, Pig, XI, Zfsh	FACS, ICC/IF, IHC-P, IP, WB
anti-Rabbit IgG antibody (HRP)	Rb	ELISA, IHC-P, WB



Latest citations

E-Cadherin antibody [SQab1717] (ARG66195)
Li et al., (2019) J Exp Clin Cancer Res. 38(1):6. (WB / Hu)

Vimentin antibody [SQab1721] (ARG66199)
Li et al., (2019) J Exp Clin Cancer Res. 38(1):6. (WB / Hu)
Zhu et al., (2019) Cell Signal. 66:109470. (WB / Hu)
Li et al., (2020) Drug Des Devel Ther. 14:1547-1559. (WB / Ms)

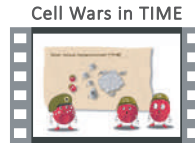
• **Endothelial to mesenchymal transition (EndMT)** see p11

Tumor immune microenvironment (TIME)

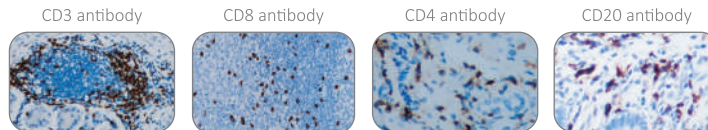
Tumor-infiltrating Lymphocyte Antibody Panel (ARG30334)

Ideal for identifying the lymphocytes in tumor tissues

- Includes general **T cell** marker CD3 antibody
- Includes **cytotoxic T cell** marker CD8 antibody
- Includes **regulatory T cell** marker CD4 antibody
- Includes **B cell** marker CD20 antibody
- Outstanding **IHC** performance



Component	Reactivity	Application
CD3 antibody [SQab1713]	Hu	FACS, ICC/IF, IHC-P, IP, WB
CD8 antibody [SQab19146]	Hu	IHC-P
CD4 antibody [SQab1714]	Hu	FACS, IHC-P, IP, WB
CD20 antibody [SQab1719]	Hu	FACS, ICC/IF, IHC-P, IP



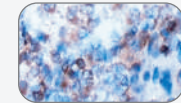
Human MDSC Marker Antibody Duo (ARG30336)

CD11b antibody [M1/70]

 FACS, ICC/IF, IHC-Fr, IP

CD33 antibody [WM53]

 FACS, ICC/IF, IHC-Fr, IP, WB



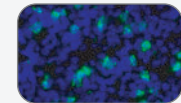
Mouse MDSC Marker Antibody Duo (ARG30335)

CD11b antibody [M1/70]

 FACS, ICC/IF, IHC-Fr, IP

Gr-1 antibody [RB6-8C5]

 FACS, IHC-P, IHC-Fr, IP



- **CAF Marker Antibody Duo** see p11
- **TAM Marker Antibody Panel** see p15

Angiogenesis

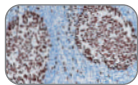
Microvascular Density Antibody Panel (ARG30327)

Ideal for examining angiogenesis in tumor tissues and xenograft model

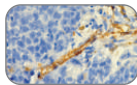
- Includes **proliferation marker** Ki-67 antibody
- Includes **endothelial cell marker** CD31 antibody
- Includes **pericyte marker** Desmin antibody
- Includes **smooth muscle cell marker** α -SMC antibody
- Excellent **IHC** performance

Component	Reactivity	Application
Ki-67 antibody [SQab1897]	Hu	IHC-P
CD31 antibody	Hu, Ms, Rat, Pig	ICC/IF, IHC-Fr, IHC-P, WB
Desmin antibody [SQab1722]	Hu, Ms, Rat	IHC-P, WB
α -SMA antibody [SQab18108]	Hu, Ms, Rat, Mk, Bv, Dog, Pig, Zfsh	FACS, ICC/IF, IHC-P, WB
anti-Rabbit IgG antibody (HRP)	Rb	ELISA, IHC-P, WB

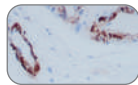
Ki-67 antibody



CD31 antibody



Desmin antibody

 α -SMA antibody

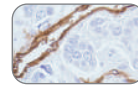
Angiogenesis Antibody Panel (ARG30328)

Ideal for examining angiogenesis by triple staining in human and mouse samples

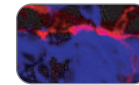
- Includes **endothelial cell marker** CD34 antibody
- Includes **basement membrane marker** Collagen IV antibody
- Includes **pericyte marker** NG2 antibody
- Includes **smooth muscle cell marker** α -SMA antibody
- Excellent **IHC** performance

Component	Reactivity	Application	Host
CD34 antibody [QBEND/10]	Hu, Ms, NHuPrm, Rb	FACS, IHC-Fr, IHC-P, IP, WB	Mouse
Collagen IV antibody	Hu, Ms, Rat, Bv	ELISA, EM, FACS, FLISA, ICC/IF, IHC-Fr, IHC-P, IP, WB	Goat
NG2 antibody	Hu, Ms, Rat	IHC-P, WB	Rabbit
α -SMA antibody	Hu, Ms	ICC/IF, IHC-P, WB	Goat

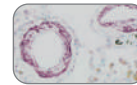
CD34 antibody



Collagen IV antibody



NG2 antibody

 α -SMA antibody

Endothelial to mesenchymal transition (EndMT)

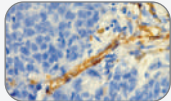
Endothelial Cell Marker Antibody Duo (ARG30300)

Ideal for identifying endothelial cells in human and mouse samples

CD31 antibody



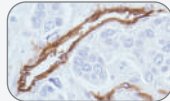
ICC/IF, IHC-P, IHC-Fr, WB
Hu, Ms, Rat, Pig



CD34 antibody [QBEND/10]



FACS, IHC-P, IHC-Fr, IP, WB
Hu, Ms, NHuPrm, Rb



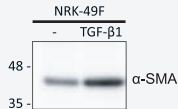
CAF Marker Antibody Duo (ARG30322)

Ideal for studying myofibroblast differentiation

α -SMA antibody [SQab18108]



FACS, ICC/IF, IHC-P, WB
Hu, Ms, Rat, Bv, Dog, Mk,
Pig, Zfsh



Vimentin antibody [SQab1721]



FACS, ICC/IF, IHC-P, IP, WB
Hu, Ms



eNOS

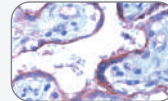
Phospho-eNOS Antibody Duo (Total, pS1177) (ARG30247)

Ideal for detecting activated eNOS

eNOS antibody



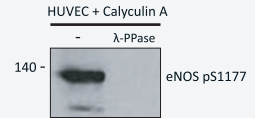
ELISA, ICC/IF, IHC, IP, WB
Hu, Ms, Rat



eNOS pS1177 antibody



ELISA, WB
Hu, Ms, Rat



Latest citations

CD31 antibody (ARG52748)

- Su et al., (2019) ACS Nano. 13(4):4290-4301. (IHC-P / Ms)
- Yang et al., (2019) Cancer Res. 79(3):557-571. (IHC-P / Ms)
- Li et al., (2019) Theranostics. 9(20):5839-5853. (IHC-P / Rat)
- Chen et al., (2019) Cell Death Differ. 26(7):1346-1364. (IHC-P / Ms)
- Ying et al., (2020) J Orthop Res. 38(2):269-276. (IHC-P / Hu)

CD34 antibody [QBEND/10] (ARG52756)

Wu et al., (2018) Dig Dis Sci. 63(1):113-125. (IHC-P / Hu)

eNOS pS1177 antibody (ARG20524)

Wu et al., (2019) J Agric Food Chem. 67(29):8149-8159. (WB / Hu)

Inflammation

Inflammation Antibody Panel (ARG30323)

Ideal for studying inflammation in cultured cells

- Includes **NFκB activation marker** in response to multiple inflammatory stimuli
- Includes key **inflammation markers** iNOS and COX-2 antibodies
- Includes **loading control** antibody
- Outstanding antibody performance

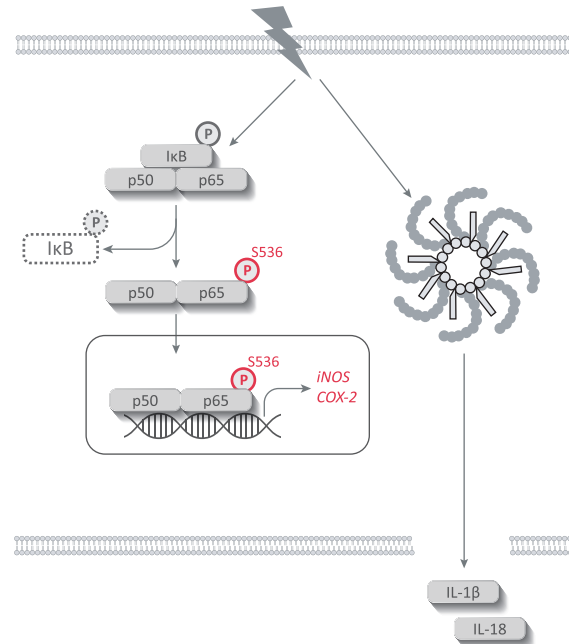
Component	Reactivity	Application
NFκB p65 pS536 antibody	Hu, Ms, Rat	ICC/IF, IHC-P, WB
iNOS antibody	Hu, Ms, Rat, Mamm	ICC/IF, IHC-P, IP, WB
COX-2 antibody	Hu, Ms, Rat, Gpig, Mk, Rb, Sh	ICC/IF, IHC, WB
β-Actin antibody	Hu, Ms, Rat, Rb, Sh	IHC-P, WB
anti-Rabbit IgG antibody (HRP)	Rb	ELISA, IHC-P, WB

📄 Latest citations

iNOS antibody (ARG56509)

Motterlini et al., (2019) Redox Biol. 20:334-348. (IHC-P / Ms)

Tang et al., (2020) Biomaterials. 255:120138. (IHC-P / Rat)



- **NFκB Pathway Antibody Duos** see p23

Inflammasome

NLRP3 Inflammasome Antibody Panel (ARG30331)

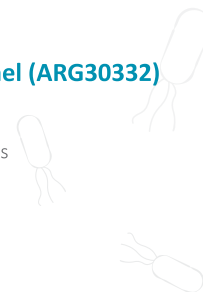
- Includes NLRP3 inflammasome components **NLRP3**, **ASC** and **Caspase-1** antibodies
- Includes **loading control** antibody
- Works on **human** and **mouse** samples



Component	Reactivity	Application
NLRP3 antibody	Hu, Ms, Rat	IHC-P, WB
ASC antibody	Hu, Ms	WB
Caspase-1 antibody	Hu, Ms	ICC/IF, IHC-P, IP, WB
GAPDH antibody [6C5]	Hu, Ms, Rat, Mk, Bb, Cat, Ck, Dog, Fsh, Hm, Mk, Pig, Rb, XI	ELISA, ICC/IF, IHC-Fr, WB

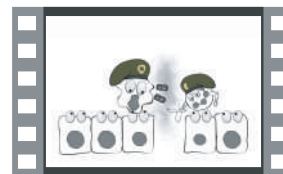
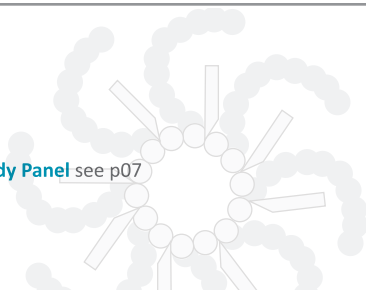
NLRC4 Inflammasome Antibody Panel (ARG30332)

- Includes NLRC4 inflammasome components **NLRC4**, **ASC** and **Caspase-1** antibodies
- Includes **loading control** antibody
- Works on **human** and **mouse** samples



Component	Reactivity	Application
NLRC4 antibody	Hu, Ms	ICC/IF, IHC-P, WB
ASC antibody	Hu, Ms	WB
Caspase-1 antibody	Hu, Ms	ICC/IF, IHC-P, IP, WB
GAPDH antibody [6C5]	Hu, Ms, Rat, Mk, Bb, Cat, Ck, Dog, Fsh, Hm, Mk, Pig, Rb, XI	ELISA, ICC/IF, IHC-Fr, WB

- **Pyroptosis Antibody Panel** see p07



Inflammasome & Pyroptosis



arigo
minifilm

Inflammatory cells



Human Inflammatory Cell Antibody Panel (ARG30325)

- Includes **neutrophil marker** MPO antibody
- Includes **macrophage marker** CD68 antibody
- Includes **T cell marker** CD3 antibody
- Includes **B cell marker** CD20 antibody
- Outstanding **IHC** performance



Cell marker	Component	Application
Neutrophil	MPO antibody	IHC-P, WB
Macrophage	CD68 antibody [SQab1742]	FACS, IHC-P
T cell	CD3 antibody [SQab1713]	FACS, ICC/IF, IHC-P, IP, WB
B cell	CD20 antibody [SQab1719]	FACS, ICC/IF, IHC-P, IP
	anti-Rabbit IgG antibody (HRP)	ELISA, IHC-P, WB

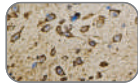
Mouse Inflammatory Cell Antibody Panel (ARG30326)

- Includes **neutrophil marker** Ly6G/Ly6C antibody
- Includes **macrophage marker** F4/80 antibody
- Includes **T cell marker** CD3 antibody
- Includes **B cell marker** B220 antibody
- Outstanding **IHC** performance

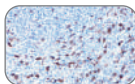


Cell marker	Component	Application
Neutrophil	Ly6G/Ly6C antibody [RB6-8C5]	Depletion, FACS, IHC-P, IHC-Fr, IP
Macrophage	F4/80 antibody [Cl:A3-1]	EM, FACS, ICC/IF, IHC-P, IHC-Fr, IHC-R, IP, RIA, WB
T cell	CD3 antibody [CD3-12]	FACS, ICC/IF, IHC-P, IHC-Fr, WB
B cell	B220 antibody [RA3-6B2]	FACS, FuncSt, ICC/IF, IHC-P, IHC-Fr, IP

MPO antibody



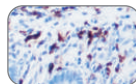
CD68 antibody



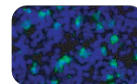
CD3 antibody



CD20 antibody



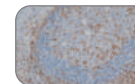
Ly6G/Ly6C antibody



F4/80 antibody



CD3 antibody



B220 antibody

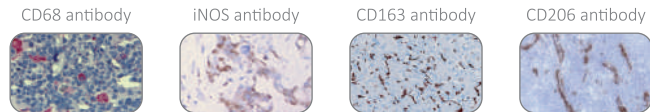


M1 / M2 / TAM Marker Antibody Panel (ARG30333)

Ideal for identifying M1, M2, and TAMs (tumor-associated macrophages) in cultured cells or tissues

- Includes the antibody markers for **M1, M2, and TAMs**
- Excellent for studying **macrophage polarization**
- Outstanding **IHC** performance
- Good for double staining

Component	Reactivity	Application
CD68 antibody [KP1]	Hu, Ms, Rat, Rb	FACS, ICC/IF, IHC-Fr, IHC-P, WB
iNOS antibody	Hu, Ms, Rat, Mamm	ICC/IF, IHC-P, IP, WB
CD163 antibody [SQab19148]	Hu	IHC-P
CD206 antibody [15-2]	Hu, Ms	FACS, ICC/IF, IHC-Fr, IP, WB

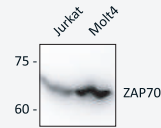


TCR signaling

Phospho-ZAP70 Antibody Duo (Total, pY319) (ARG30033)

ZAP70 antibody

IP, WB
Hu



ZAP70 pY319 antibody

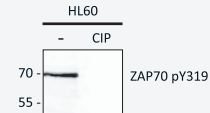
ICC/IF, WB
Hu, Ms, Rat



Phospho-ZAP70 Antibody Duo (pY319, pY493) (ARG30043)

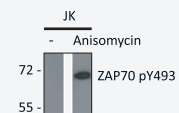
ZAP70 pY319 antibody

ICC/IF, WB
Hu, Ms, Rat



ZAP70 pY493 antibody

IHC-P, WB
Hu, Ms, Rat

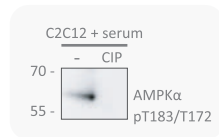


Metabolism

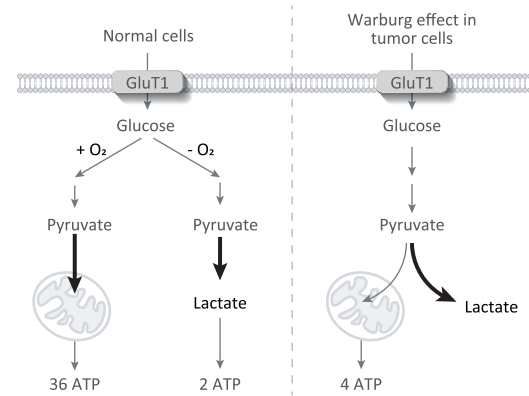
AMPK-ACC Pathway Antibody Panel (ARG30182)

- Includes **AMPK activation** marker antibody
- Includes AMPK downstream substrate **ACC pS79** antibody
- Includes secondary antibody

Component	Reactivity	Application
AMPK α antibody	Hu, Ms, Rat	ICC/IF, IHC-P, WB
AMPK α pT183/T172 antibody	Hu, Ms, Rat	IHC-P, WB
ACC pS79 antibody	Hu	WB
anti-Rabbit IgG antibody (HRP)	Rb	ELISA, IHC-P, WB

AMPK α antibodyAMPK α pT183/T172 antibody

ACC pS79 antibody



Phospho-PKM2 Antibody Duo (Total, pS37) (ARG30014)

Ideal for studying Warburg effect

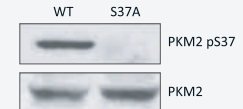
PKM1/2 antibody

ICC/IF, IHC-P, WB
Hu, Ms, Rat



PKM2 pS37 antibody

ICC/IF, WB
Hu



Neural cells

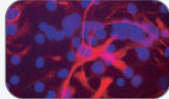
NSC Antibody Duo (ARG30006)

Ideal for identifying neural stem cells and adult neural progenitors

Nestin antibody [4D11]



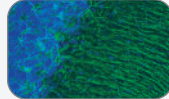
ICC/IF, IHC-Fr, WB
Hu, Ms, Rat



GFAP antibody



ICC/IF, IHC-Fr, IHC-P, WB
Hu, Ms, Rat, Cat, Dog



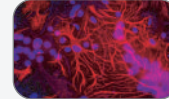
Astrocyte Marker Antibody Duo (ARG30007)

Ideal for immunofluorescence purpose

GFAP antibody



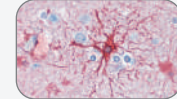
ICC/IF, IHC-P, IHC-Fr, WB
Hu, Ms, Rat, Cat, Dog



GFAP antibody



IHC-Fr, IHC-P, WB
Hu, Ms, Rat



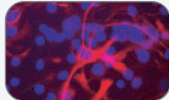
NSC / NPC Antibody Duo (ARG30146)

Ideal for identifying neural stem cells and radial glia

Nestin antibody [4D11]



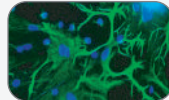
ICC/IF, IHC-Fr, WB
Hu, Ms, Rat



Vimentin antibody



ICC/IF, IHC-Fr, WB
Hu, Ms, Rat



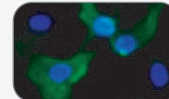
Müller Cell Marker Antibody Duo (ARG30304)

Ideal for labeling Müller cells and identifying immature and mature astrocytes

GFAP antibody [GF5]



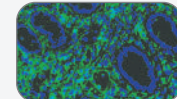
ELISA, ICC/IF, IHC-Fr, WB
Hu, Ms, Rat


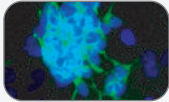


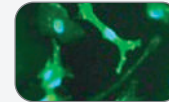

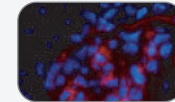

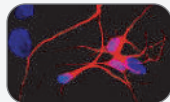

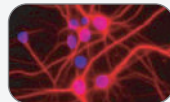


Vimentin antibody [SQab1859]



FACS, ICC/IF, IHC, WB
Hu, Ms, Rat, Ck, Dog, Gt,
Hm, Mk, Pig, XI, Zfsh



Hippocampal Neuron Marker Antibody Duo (ARG30093)*Ideal for studying hippocampal neurogenesis***Doublecortin antibody [3e1]**
 ICC/IF, IHC-Fr, WB
Hu, Ms, Rat, Bv
**Prox1 antibody [5G10]**
 IHC
Hu, Ms, Rat, Ck
**Microglia Marker Antibody Duo (ARG30317)***Ideal for double staining of microglial cells***Iba1 antibody**
 ICC/IF, IHC-P, WB
Hu, Ms, Rat, Bv, Dog,
Gpig, Pig, Rb
**CD68 antibody [KP1]**
 FACS, ICC/IF, IHC, WB
Hu, Ms, Rat, Rb
**Neurite Marker Antibody Duo (ARG30301)***Ideal for studying neuronal differentiation and labeling neuronal cells* **β 3-Tubulin antibody [TU-20]**
 FACS, ICC/IF, IHC, WB
Hu, Ms, Rat, Bb, Bv, Ck,
Hm, Pig
**MAP2 antibody**
 ICC/IF, IHC-P, IHC-Fr, WB
Hu, Ms, Rat, Bv, Dog, Sh
**📖 Latest citations****GFAP antibody [GF5] (ARG10122)**

Luo et al., (2020) Cell Mol Neurobiol. 40(4):569-585. (IHC-Fr, WB / Rat)

Iba1 antibody (ARG63338)Shi et al., (2018) Transl Neurodegener. 7:21. (IHC-P / Ms)
Zhang et al., (2018) J Neuroinflammation. 15(1):37. (IHC-P / Ms)
Wang et al., (2019) Front Aging Neurosci. 11:3. (IHC-P / Ms)**MAP2 antibody (ARG52328)**

Chen et al., (2019) Brain Behav Immun. 80:439-451. (IHC-Fr / Ms)

 β 3-Tubulin antibody [TU-20] (ARG62683)

Wang et al., (2019) Front Neurosci. 13:1151. (IHC-Fr, WB / Rat)

Neurodegeneration

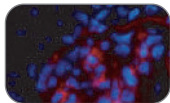
Neuroinflammation Antibody Panel (ARG30324)

Ideal for studying neuroinflammation

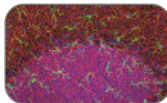
- Includes **microglial markers** Iba1 and CD68 antibodies
- Includes **astrocyte marker** GFAP antibody
- Ideal for **triple staining**
- Works on **human, mouse, and rat** samples

Component	Reactivity	Application	Host
CD68 antibody [KP1]	Hu, Ms, Rat, Rb	FACS, ICC/IF, IHC-Fr, IHC-P, WB	Mouse
Iba1 antibody	Hu, Ms, Rat	ICC/IF, IHC-Fr, WB	Rabbit
GFAP antibody	Hu, Ms, Rat, Bv Cat, Ck, Mk, Rb	ELISA, FACS, ICC/IF, IHC-Fr, IHC-P, WB	Chicken

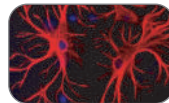
CD68 antibody



Iba1 antibody



GFAP antibody



Phospho-Tau Antibody Panel (ARG30211)

Ideal for studying hyper-phosphorylation of Tau protein

- Includes the antibodies against the **key phosphorylation sites**
- Works on **human, mouse, and rat** samples

Component	Reactivity	Application
Tau antibody	Hu, Ms, Rat	IHC-P, WB
Tau pS396 antibody	Hu, Ms, Rat	IHC-P, WB
Tau pS404 antibody	Hu, Ms, Rat	ICC/IF, IHC-P, WB
anti-Rabbit IgG antibody (HRP)	Rb	ELISA, IHC-P, WB

Phospho- α -Synuclein Antibody Duo (Total, pS129) (ARG30266)

α -Synuclein antibody [3H9]

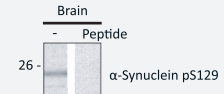
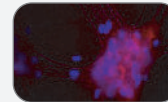


FACS, ICC/IF, WB
Hu, Ms, Rat

α -Synuclein pS129 antibody



WB
Hu, Ms, Rat



Akt-mTOR pathway

Phospho-Akt Antibody Duo (pT308, pS473) (ARG30038)

Akt pT308 antibody

ICC/IF, IHC-P, WB
Hu, Ms, Rat



Akt pS473 antibody

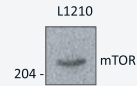
ICC/IF, IHC-P, WB
Hu, Ms, Rat



Phospho-mTOR Antibody Duo (Total, pS2448) (ARG30052)

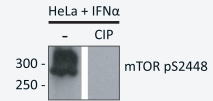
mTOR antibody

ELISA, ICC/IF, WB
Hu, Ms



mTOR pS2448 antibody

ICC/IF, IHC-P, WB
Hu, Ms, Rat



Latest citations

Akt pT308 antibody (ARG51559)

Liu et al., (2018) *Cancer Sci.* 109(12):3762-3773. (WB / Ms)
Wang et al., (2019) *Int J Med Sci.* 16(12):1573-1582. (WB / Hu)
Wang et al., (2019) *Mol Med Rep.* 19(1):499-507. (WB / Rat)

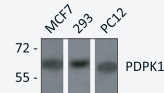
Akt pS473 antibody (ARG51558)

Qiao et al., (2017) *Toxicol Lett.* 284:37-45. (WB / Rat)
Lin et al., (2019) *Am J Physiol Heart Circ Physiol.* 317(6):H1301-H1311. (WB / Ms)

Phospho-PDPK1 Antibody Duo (Total, pS241) (ARG30219)

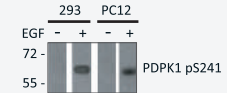
PDPK1 antibody

ICC/IF, IHC-P, WB
Hu, Ms, Rat



PDPK1 pS241 antibody

ICC/IF, IHC-P, WB
Hu, Ms, Rat



FAK-Src pathway

Phospho-FAK Antibody Panel (ARG30203)

Ideal for studying FAK activity

Component	Reactivity	Application
FAK antibody	Hu, Ms, Rat	ICC/IF, IHC-P, WB
FAK pY397 antibody	Hu, Rat	WB
FAK pY576/Y577 antibody	Hu, Ms, Rat	ICC/IF, WB
FAK pY925 antibody	Hu, Ms, Rat	ICC/IF, WB
anti-Rabbit IgG antibody (HRP)	Rb	ELISA, IHC-P, WB

Phospho-Src Antibody Panel (ARG30170)


Ideal for studying Src activity

Component	Reactivity	Application
Src antibody	Hu, Ms	ICC/IF, WB
Src pY418 antibody	Hu, Ms, Rat	IHC-P, WB
Src pY529 antibody	Hu, Ms, Rat	ICC/IF, IHC-P, WB
anti-Mouse IgG antibody (HRP)	Ms	ELISA, IHC-P, WB
anti-Rabbit IgG antibody (HRP)	Rb	ELISA, IHC-P, WB

JAK-STAT pathway


Phospho-STAT1 Antibody Duo (Total, pY701) (ARG30339)

STAT1 antibody

 IHC-P, WB
Hu, Ms, Rat




STAT1 pY701 antibody

 IHC-P, WB
Hu, Ms, Rat




Phospho-STAT5A Antibody Duo (Total, pY694) (ARG30214)

STAT5A antibody

 IHC-P, WB
Hu



STAT5A pY694 antibody


 IHC-P, WB
Hu, Ms, Rat




MAPK pathway

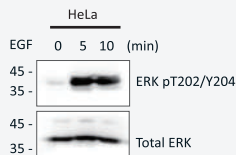
Phospho-ERK Antibody Duo (Total, pT202/Y204) (ARG30264)

ERK antibody

 ICC/IF, IHC-P, WB
Hu, Ms, Rat


ERK pT202/Y204 antibody

 ICC/IF, IHC, WB
Hu, Ms, Rat, Dog




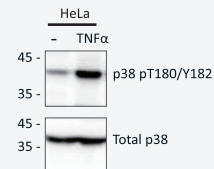
Phospho-p38 Antibody Duo (Total, pT180/Y182) (ARG30272)

p38 antibody

 ICC/IF, WB
Hu, Ms, Rat


p38 pT180/Y182 antibody

 WB
Hu, Ms, Rat




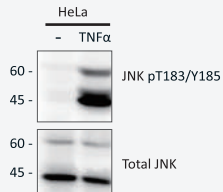
Phospho-JNK Antibody Duo (Total, pT183/Y185) (ARG30294)

JNK antibody

 IHC-P, WB
Hu, Ms, Rat

JNK pT183/Y185 antibody

 ICC/IF, WB
Hu, Ms, Rat



Latest citations

Phospho-ERK Antibody Duo (ARG30264)

Wang et al., (2018) Eur J Med Chem. 158:548-558. (WB / Hu)

JNK antibody (ARG51218)

Zhao et al., (2019) Oxid Med Cell Longev. 2019:7415212. (WB / Rat)

Poplawski et al., (2019) Oxid Med Cell Longev. 2019:6949347. (WB / Rat)

Guan et al., (2019) Life Sci. 225:46-54. (WB / Rat)

JNK pT183/Y185 antibody (ARG51807)

Du et al., (2019) Stem Cells Int. 2019:4592701. (WB / Hu)


Yin et al., (2019) J Funct Foods. 61:103493. (WB / Ms)

p38 pT180/Y182 antibody (ARG51850)


Du et al., (2019) Stem Cells Int. 2019:4592701. (WB / Hu)

| NFκB pathway

Phospho-IκBα Antibody Duo (Total, pS32/S36) (ARG30037)


IκBα antibody
 WB
 Hu, Ms, Rat




IκBα pS32/S36 antibody
 ICC/IF, IHC, IP, WB
 Hu, Ms, Rat

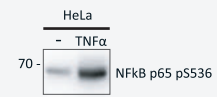


Phospho-NFκB p65 Antibody Duo (Total, pS536) (ARG30248)


NFκB p65 antibody
 IHC-P, WB
 Hu, Ms, Rat




NFκB p65 pS536 antibody
 ICC/IF, IHC-P, WB
 Hu, Ms, Rat

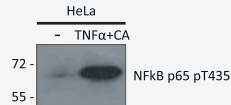


Phospho-NFκB p65 Antibody Duo (Total, pT435) (ARG30254)

NFκB p65 antibody
 ICC/IF, IHC-P, WB
 Hu, Ms, Rat



NFκB p65 pT435 antibody
 ICC/IF, IHC-P, WB
 Hu, Ms, Rat



📄 Latest citations

Phospho-IκBα Antibody Duo (Total, pS32/S36) (ARG30037)
 Mao et al., (2020) Biomed Pharmacother. 121:109280. (WB / Rat)

Phospho-NFκB p65 Antibody Duo (Total, pT435) (ARG30254)
 Yin et al., (2019) J Funct Foods. 61:103493. (WB / Ms)

NFκB p65 antibody (ARG65677)
 Liu et al., (2018) Mediators Inflamm. 2018:6016272. (ICC/IF, WB / Rat)

DNA damage response

Phospho-p53 Antibody Duo (Total, pS15) (ARG30213)

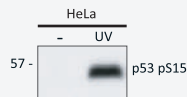
p53 antibody

ICC/IF, IHC-P, WB
Hu



p53 pS15 antibody

IHC, IP, WB
Hu, Ms, Rat



Phospho-Bcl-xL Antibody Duo (Total, pS62) (ARG30233)

Bcl-xL antibody

WB
Hu, Ms, Rat



Bcl-xL pS62 antibody

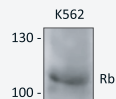
ICC/IF, IHC-P, WB
Hu, Ms, Rat



Phospho-Rb Antibody Duo (Total, pS807) (ARG30046)

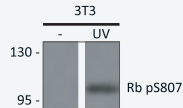
Rb antibody

IHC-P, WB
Hu, Ms, Rat



Rb pS807 antibody

IHC-P, WB
Hu, Ms, Rat



Latest citations

Phospho- Rb Antibody Duo (Total, pS807) (ARG30046)
Yang et al., (2020) Cancer Cell Int. 20:9. (WB / Hu)



arigo.
biolaboratories
Antibody • Duo • ELISA kit





Phone : +886 (3) 5621738 / E-mail : info@arigobio.com

www.arigobio.com