

Company Introduction

**The story behind our squirrel**

p 1.

About Antibody Duos

**Which Antibody Duos suit you best?**

p 2.

Take home messages

**5 Tips for successful WB detection**

p 8.

The product list

**Antibody Duos and Panels**

p 24 - 41.



Catalog for Antibody Duos  
and Antibody Panels

**2**  
**is better  
than one**

## The Story Behind Our Squirrel

About 



arigo. biolaboratories

### Excellence:

As smart as squirrels, arigo provides smart solutions allowing researchers to accelerate experiments with convincing results. Unlike many other antibody companies, our scientists are dedicated to developing the most comprehensive collection of Antibody Duos and Antibody Panels. Pathway duos identifies protein-protein relationships, PTM duos detect total and modified form of target proteins, Control duos and ELISA duos accelerate experimental procedures. Antibody Panels consist of several antibodies grouped together according to their scientific relevance.

### Responsiveness:

The same as squirrels responsive to the environment, scientists in arigo thoroughly analyze the research frontier and cooperate with scientists worldwide. We bring out cutting edge research solutions in the timeliest manner, to meet the needs of unlimited possibilities in the emerging life science world.

### Our Brand Story:

Have you noticed a squirrel hidden in the logo of arigo? Arigo Biolaboratories made itself synonymous with Smart Solutions using "squirrel" as a symbol.

### Quality:

Arigo scientists precisely screen our products and validate them with strict control. As a result we are proud to offer customers quality products that generate the most valuable results.

### Balance:

To pursue a balance in laboratory life, our staff builds out many interesting ideas, to let researchers have fun while performing experiments in the labs. Our cute squirrel will always be with you to brighten your day.

### Best for the future:

Just as squirrels save the best nuts for the future, arigo is dedicated to providing our customers with the most up to date, reliable product range to get quality results and papers published. We know that your research determines the future of mankind.

## About Antibody Duos

**Find out which antibody duos suit you best!**

### PTM Duos:

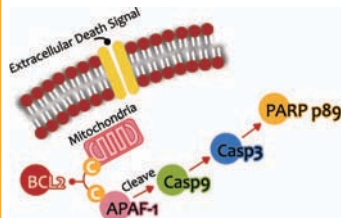
Post-translational  
modification



To detect total and activated form of your target protein of interest.

### Pathway Duos:

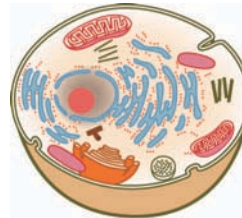
Protein-protein  
interaction



To identify and verify protein-protein relationships in a pathway.

### Control Duos:

WB, IHC, IF,  
FACS



To detect expression of protein in organelle or cell type of interest.

### ELISA Duos:

ELISA



To perform sandwich ELISA assays with optimized range and sensitivity.

## Our Company

The story behind our squirrel

-----01

## About

Antibody Duos

-----02

## Our Top Selling Items

PTM Duos

-----05

## 5 Tips for Successful WB Detection

Troubleshooting

-----08

## Our Top Selling Items

Pathway Duos

-----10

## Our Top Selling Items

Control Duos

-----13

## Organelle Marker

Reference List

-----15

## Our Top Selling Items

ELISA Duos

-----17

## Our Top Selling Items

Antibody Panels

-----20

## Product List

Antibody Duos

-----24

## Product List

Antibody Panels

-----33

## Our Worldwide Distributors

Contact Info

-----42





PTM Duos:

Access protein PTM accurately.

## Our Top Selling Items

Product name:

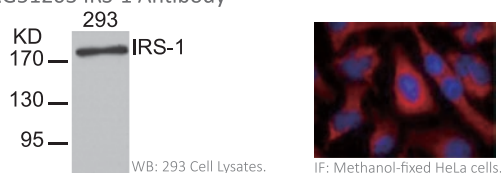
Phospho-IRS1

Antibody Duo (Total, pS636)

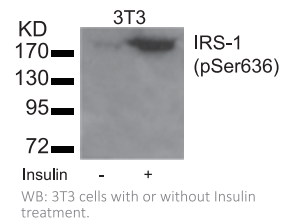
Cat No. ARG30041

Component:

ARG51203 IRS-1 Antibody



ARG51720 IRS-1 (pSer636) Antibody



### Product Description:

Insulin receptor substrate 1 (IRS-1) is a signalling adapter protein that is phosphorylated by insulin receptor tyrosine kinase. Mutations in IRS-1 are associated with type II diabetes and susceptibility to insulin resistance.

IRS-1 plays a key role in transmitting signals from the insulin and insulin-like growth factor-1 (IGF-1) receptors to PI3K / Akt and Erk MAP kinase pathways. IRS-1 also plays important biological function for both metabolic and mitogenic pathways.

IRS-1 could be phosphorylated by p70S6K, a downstream protein of Akt, at Ser-307, Ser-636, and Ser-1101 to insulin sensitivity. In addition, IRS-1 is also potentially phosphorylated by the PKC $\theta$  kinase at Ser307.

Product name:

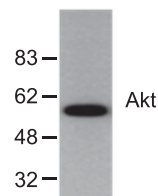
Phospho-AKT

Antibody Duo (Total,pS473)

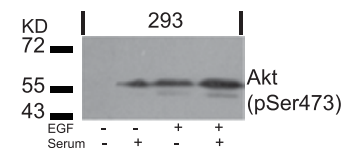
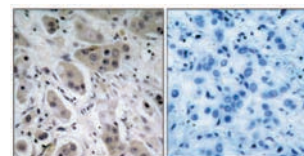
Cat No. ARG30039

Component:

ARG20074 AKT Antibody



ARG51558 AKT (pSer473) Antibody



## PTM Duos

Product name:

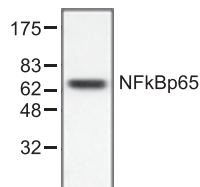
Phospho-NFkB

Antibody Duo (Total, pS536)

Cat No. ARG30031

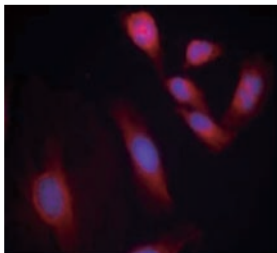
Component:

ARG20427 NFkB p65 Antibody

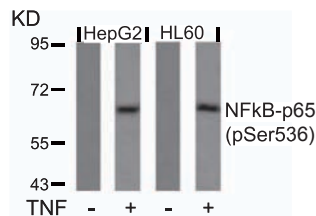


WB: Jurkat Cell Lysates.

ARG51518 NFkB p65 (pSer536) Antibody



IF: Methanol-fixed HeLa cells.



WB: HepG2 and HL60 cells with or without TNF treatment.

Product name:

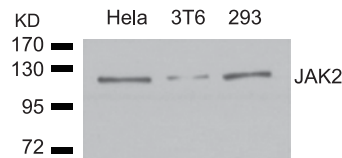
Phospho-JAK2

Antibody Duo (Total,pY1007)

Cat No. ARG30159

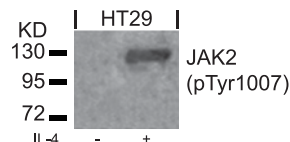
Component:

ARG51112 JAK2 Antibody

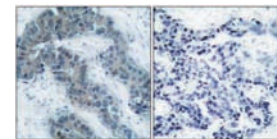


WB: HeLa, 3T6 and 293 Cell Lysates.

ARG51650 JAK2 (pTyr1007) Antibody



WB: HT29 cells with or without IL-4 treatment.



IHC: Human breast carcinoma tissue.

## Product Description:

Members of the Janus family of tyrosine kinases (Jak1, Jak2, Jak3, and Tyk2) are activated by ligands binding to a number of associated cytokine receptors. Upon cytokine receptor activation, Jak proteins become autophosphorylated and phosphorylate their associated receptors to provide multiple binding sites for signaling proteins. The phosphorylation of Y1007, within the activation loop of subdomain VII in Jak2, plays a critical role in the regulation of the kinase domain Darnell, J.E. (1997) Science 277, 1630-5.

Feng J. et al. (1997) Mol. Cell. Biol. 17, 2497-2501.

Gauzzi, M.C. et al. (1996) J Biol Chem 271, 20494-500.

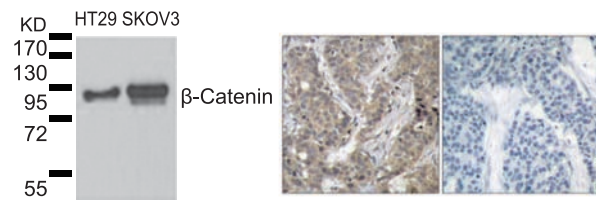
Leonard, W.J. (1998) Annu. Rev. Immunol. 16, 293-322..

**PTM Duos**

**Product name:**  
**Phospho- $\beta$  Catenin**  
**Antibody Duo (Total, pS37)**

**Cat No. ARG30099**

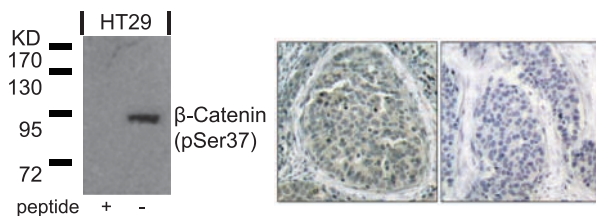
**Component:**  
**ARG51192  $\beta$  Catenin Antibody**



WB: HT29 and SKOV3 Cell Lysates.

IHC: Human breast carcinoma tissue.

**ARG51710  $\beta$  Catenin (pSer37) Antibody**



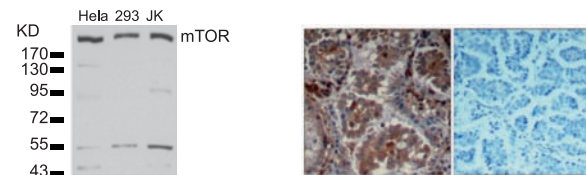
WB: HT29 cells with or without blocking peptide.

IHC: Human breast carcinoma tissue.

**Product name:**  
**Phospho-mTOR**  
**Antibody Duo (Total, pS2448)**

**Cat No. ARG30052**

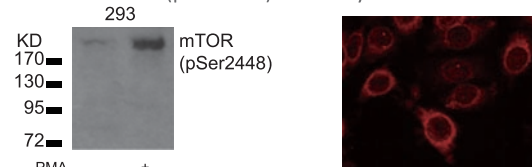
**Component:**  
**ARG51194 mTOR Antibody**



WB: HeLa, 293 and JK Cell Lysates.

IHC: Human lung carcinoma tissue.

**ARG51712 mTOR (pSer2448) Antibody**



WB: 293 cells with or without PMA treatment.

IF: Methanol-fixed MCF cells.

**Product Description:**

The mammalian target of rapamycin (mTOR) regulates cell growth with the growth factor and nutrient status of the cell. mTOR is a direct substrate for the AKT kinase that phosphorylates mTOR at Ser-2448. Later it was found that the phosphorylation of mTOR at Ser-2448 also requires autophosphorylation at Ser-2481.

mTOR phospho duo allows scientists to study the function of mTOR in the cell proliferation and homeostasis abnormality in tumor cells. The control of mTOR pSer-2448 phosphorylation by insulin might give more insight into the potential of mTOR as a target for cancer therapy.

## 5 tips: Successful WB detection for phosphorylated proteins



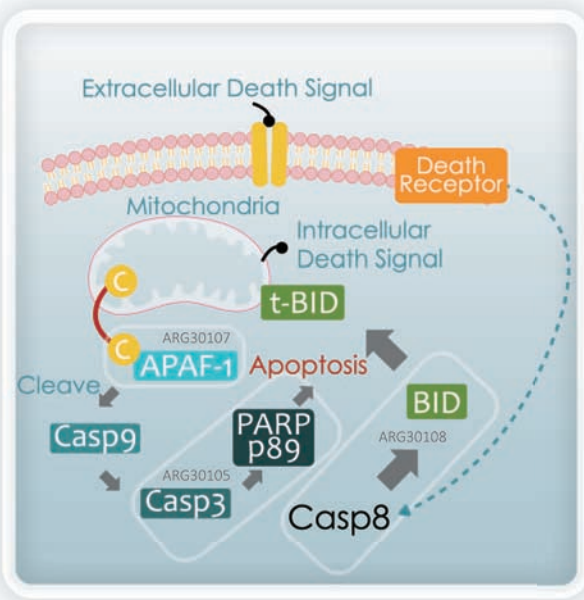
1. Block membrane with 5% BSA, not milk.
2. Add adequate phosphatase inhibitors.
3. Sufficient induction of phosphorylation.
4. Be sure of the phopho-specificity of primary antibodies.
5. Always include an antibody that detect total level of cognate protein.



Pathway Duos:

Answer your scientific questions systematically.

## Our Top Selling Items



**Product name: Apoptosis Marker**

**Antibody Duo (Casp3, PARP)**

**Cat No. ARG30105**

The TUNEL assay has been commonly used as a detection method for identifying apoptotic cells. While useful, it can also yield highly variable results as some non-apoptotic nuclei showing high levels of RNA synthesis/splicing can also be labeled by TUNEL technique.

Cleavage of Casp 3 and PARP (Poly (ADP-ribose) Polymerase) is a pre-requisite for cells who undergo final stage of cell death. The use of anti-cleaved Casp 3 (ARG20003) and anti-cleaved PARP (ARG20041) antibodies adds a more specific weapon to the arsenal of techniques for confirming apoptosis in tissue specimens.

**Product name: Death Receptor Mediated Apoptosis**

**Antibody Duo (Bid, Casp 8)**

**Cat No. ARG30108**

Apoptosis or programmed cell death can be induced by a variety of stimuli including activation of death receptors. This subgroup of the TNF/NGF-receptor-superfamily activates caspases, a family of aspartyl-specific cysteine-proteases, which are the main executioners of apoptosis. Casp-8 and Bid are the known procurers of the death signal in this part of the apoptotic pathway.

Death receptor mediated apoptosis duo includes anti-BID and anti-Cleaved Casp 8 antibodies for the identification of cell death caused by the death receptor pathway.

Kantari et al. Mol Cell Research 1813: 558-563 (2011)

**Product name: Mitochondria Apoptosis Initiator**

**Antibody Duo (APAF1, Cyt-C)**

**Cat No. ARG30107**

Cytochrome C is an electron transport protein localized in the mitochondria. When a cell receive intra- or extra-cellular death signal, Cytochrome C is then released from mitochondria to cytoplasm and form an oligomeric apoptosome with APAF-1. The apoptosome binds to and cleave Procaspase 9, releasing its mature, activated form.

Detection of cytoplasmic Cytochrome C and APAF-1 colocalization in an apoptosome with anti-Cytochrome C (ARG62461, mouse mAB) and anti APAF-1 (ARG52529, rabbit pAB) antibodies are initiate indicators of cell death.

## Pathway Duos

Our Top Selling Items



Product name:

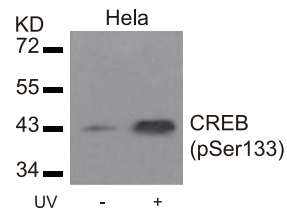
Phospho-CREB (pS133)/

Phospho-β Catenin (pS37) Antibody Duo

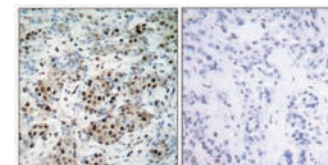
Cat No. ARG30024

Component:

ARG51556 CREB (pSer133) Antibody

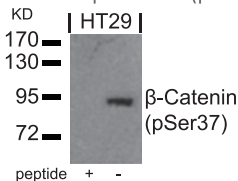


WB: HeLa cells with or without UV treatment.

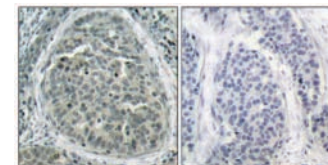


IHC: Human breast carcinoma tissue.

ARG51710 β Catenin (pSer37) Antibody



WB: HT29 cells with or without peptide blocking.



IHC: Human breast carcinoma tissue.

## Product Description:

Constitutively active GSK-3 acts to destabilize β catenin through phosphorylation (Ser37), thus, functioning as a tumor suppressor to limit proliferation. In contrast, GSK-3 promotes expansion of leukemic cells transformed by HOX overexpression through phosphorylation of CREB (Ser133) and subsequent formation of a transcriptional coactivator complex. (Cancer Cell 17, June 15, 2010)

Arigo provide CREB / β Catenin phospho Duos, ARG30024, which include β catenin (phosphor Ser37) antibody and CREB (phosphor Ser133) antibody for researchers to analysis the downstream protein and the pathway of active-GSK-3



Control Duos:

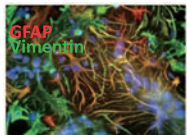
Accelerate your experimental data analysis.

**Control Duos****Our Top Selling Items****Product name:****Glia / Neural Progenitor Marker  
Antibody Duo (GFAP, Nestin)**

Cat No. ARG30006

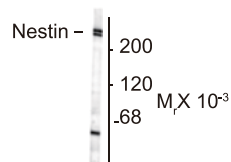
**Component:**

ARG52312 GFAP Antibody

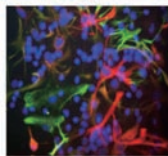


IF: Cultured neurons and glia.

ARG52345 Nestin Antibody [4D11]



WB: Neonatal rat brain lysates.



IF: Cultured neonatal rat neurons and glia.

**Product Description:**

Nestin and GFAP are two commonly used progenitor and glial markers in the field of developmental biology. Upon the differentiation of neural progenitors to glial fate, the cells stop expressing Nestin and instead, start producing GFAP and other glial proteins such as S100β.

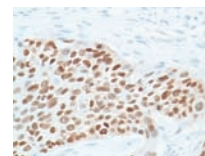
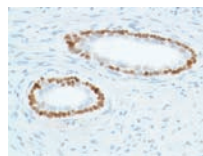
arigo grouped two of these IHC-grade antibodies together because they are often used as counter-stain for the determination of cell population during the study of embryonic neurogenesis. However, we have to take note that both Nestin and GFAP are expressed in the adult neural progenitors simultaneously.

**Product name:****Stem Cell Marker Duo 1 (Oct4, Sox2)**

Cat No. ARG30080

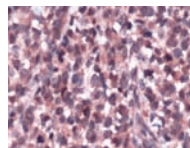
**Component:**

ARG53588 SOX-2 Antibody [SP76]



IHC: Human prostate and human esophagus squamous carcinoma tissues.

ARG53393 OCT-3/OCT-4 Antibody



IHC: Human Seminoma tissue.

**Product Description:**

Oct4, Sox2 and Nanog are the three commonly used markers in stem cells and iPS cells. Oct4 and Sox2 functions as transcription regulators for many downstream molecules to maintain the pluripotency of stem cells. When Oct4 and Sox2 are knocked-down in stem cells, they readily differentiate into neural cells, blood cells, heart cells and many other committed cell fates. However, this process is reversible by re-introducing Oct4, Sox2 and Myc genes into the terminally differentiated adult cells.

arigo offers high quality stem cell marker duo to assist studies in stem cell biology.

## Control Duos

Product name:

Proliferation Marker

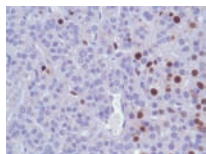
Antibody Duo (Ki67, BrdU)

Cat No. ARG30005

Component:

ARG53222

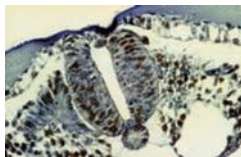
Ki67 Antibody [SP6]



IHC: Human Hepatocellular carcinoma tissue.

ARG63121

BrdU Antibody [MoBu-1]



IHC: Chick embryo tissue section.

### Product Description:

Ki-67, also known as antigen KI-67 or MKI67, a nuclear protein expressed in all phases of the cell cycle but not in the resting phase, has been reported as a cell proliferation marker in tumor and neurogenesis study.

BrdU, also known as Bromodeoxyuridine, 5-bromo-2'-deoxyuridine, BUDR or BrdUrd, is a synthetic nucleoside that is an analog of thymidine. BrdU can be incorporated into the newly synthesized DNA of replicating cells during the S phase, replacing the usage of thymidine during DNA replication. Thus, if the cells containing BrdU indicate the cells are actively replicating their DNA. Therefore, antibodies reacts BrdU can be used to detect BrdU in cells as a proliferation marker.

ARG30005 Proliferation marker Duos (Ki67, BrdU), including antibodies react two of the most important proliferation markers for the user in the cell proliferation study.

Product name:

White/Brown Fat Cell Marker

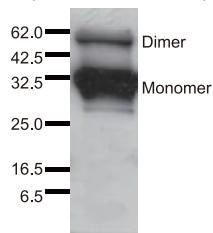
Antibody Duo (Adiponectin, UCP1)

Cat No. ARG30137

Component:

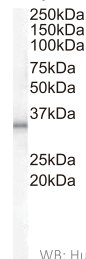
ARG20409

Adiponectin Antibody



ARG63944

UCP1 Antibody, C-terminal



WB: Human adipose Lysates.

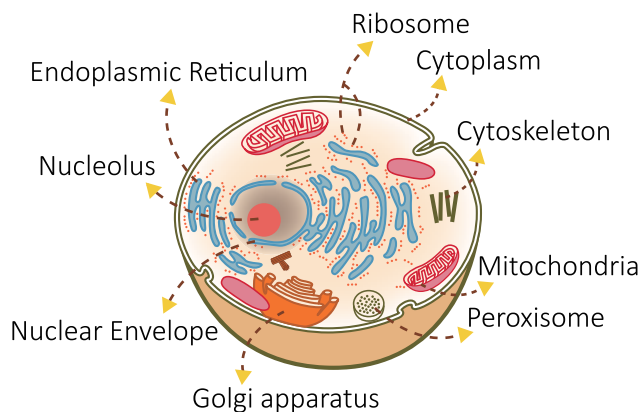
### Product Description:

Brown adipose tissue, generally known as brown fat, is one of the two types of fat found in mammals. It is abundant in newborns and hibernating animals and primarily functions to generate heat in these animals. Brown adipocytes contain numerous smaller droplets and mitochondria where more energy is needed in these cells. There have been much interest in the potential of brown adipose tissue in the function and treatment of metabolic conditions. arigo offers a duo consists of Adiponectin antibody; which stains for white adipocyte, and UCP-1 antibody; which stain for brown adipocyte, to differentiate brown adipocytes from white adipocytes in a tissue sample.

Francesca Cesari. Nat Rev Mol Cel Biol. 9: 742

Kajimura et al. (2010) Cell Metabolism 11(4): 257

## Organelle Marker Reference List



Organelle	Target (arigo cat no.)
Endoplasmic Reticulum	PDI (ARG64174)
Peroxisome	Catalase (ARG63969)
Nucleolus	Fibrillarin (ARG52280)
Ribosome	S6 Ribosomal Protein (ARG51205)
Cytoplasm	GAPDH (ARG10112), MEK1/2 (ARG65359)
Golgi apparatus	RCAS1 (ARG53522), Golga3 (ARG63854), Golga6 (ARG63851)
Nuclear Envelope	Lamin B1 (ARG20013), NUP98 (ARG54088), Lamin A/C (ARG52326)
Cytoskeleton	Actin (ARG62346), Tubulin (ARG62347), Keratin 7 (ARG54018), Vimentin (ARG63118)
Mitochondria	Cytochrome-C (ARG52933), COX IV (ARG54003), AIF (ARG54380), Hexokinase (ARG54058)
Cell junction	E-cadherin (ARG52597), N-cadherin (ARG52603), Pan-cadherin (ARG52606), ZO-1 (ARG65099), Connexin-43 (ARG51225)

ELISA Duos:

Optimized pairs for ELISA experiments.

**ELISA Duos****Our Top Selling Items****Product name:**

**Alpha Fetoprotein  
ELISA Antibody Duo**

Cat No. ARG30065

**Component:**

ARG10186  $\alpha$  Fetoprotein Antibody [AFP-Y2]

ARG10187  $\alpha$  Fetoprotein Antibody [AFP-Y2] (HRP)

**Product Description:**

Alpha fetoprotein (AFP) is a 70kD glycoprotein which is produced primarily by liver cells in fetuses. It exists in significant amount in foetal plasma and decreases rapidly after birth. Moderate amount of AFP exists in serum of pregnant women. Monitoring mother's serum AFP level in second trimester pregnancy can help assessing birth defects such as Down syndrome, neural tube defect and anencephaly. Elevated AFP level in men, children and non-pregnant women is associated with neoplastic conditions in liver, testicle or ovary.

ARG30065 Alpha Fetoprotein ELISA Duos, includes a capture antibody, ARG10186  $\alpha$  Fetoprotein antibody [AFP-Y1] and a HRP-conjugated tracer antibody, ARG10187  $\alpha$  Fetoprotein antibody [AFP-Y2] (HRP), for studying Alpha fetoprotein (AFP) protein expression level by ELISA.

**Product name:**

**CRP ELISA Antibody Duo**

Cat No. ARG30079

**Component:**

ARG10051 C Reactive Protein Antibody [63F4]

ARG10208 CRP Antibody (HRP)

**Product Description:**

C-reactive protein (CRP) is an acute phase protein that is comprised of five identical 23kDa subunits. The protein increases rapidly in response to inflammation, trauma and infection, and drops to normal level when the conditions no longer present. CRP plays a role in innate immunity by binding to phosphocholine on the surface of damaged cells or certain microbes, and activating the C1q complex in complement system. CRP is primarily produced by hepatocytes under the stimulation by inflammatory cytokines including IL-6 and TNF- $\alpha$ . Elevated CRP level is implicated with bacterial infection, autoimmune diseases, trauma and post-surgical complications. Study has shown that people with higher CRP baseline have a higher disposition to develop cardiovascular diseases such as heart attack and stroke.

ARG30079 CRP ELISA Duos, includes a capture antibody, ARG10051 C Reactive Protein antibody [63F4] and a HRP-conjugated tracer antibody, ARG10208 CRP antibody (HRP), for studying C-reactive protein (CRP) protein expression level by ELISA.

## **ELISA Duos**

### **Product name:**

**EGF ELISA Antibody Duo**

**Cat No. ARG30073**

### **Component:**

ARG10199 EGF antibody [S-134]

ARG10200 EGF antibody [S-146] (HRP)

### **Product Description:**

Epidermal growth factor (EGF), along with its receptor EGFR, plays an important role in cell proliferation, differentiation and survival. The binding of EGF to EGFR triggers the intrinsic tyrosine kinase activity of EGFR, activates signalling molecules and stimulates the synthesis of proteins and DNAs.

EGF is crucial for maintaining mucosal lining in gastrointestinal duct and for healing of oral and gastroesophageal ulcers. EGF signalling is needed for cancer growth. Monoclonal antibodies that block EGFR have been applied for lung cancer and colon cancer treatment.

ARG30073 EGF ELISA Duos, includes a capture antibody, ARG10199 EGF antibody [S-134] and a HRP-conjugated tracer antibody, ARG10200 EGF antibody [S-146] (HRP), for studying Epidermal growth factor (EGF) protein expression level by ELISA.

### **Product name:**

**Follicle Stimulating Hormone**

**ELISA Antibody Duo**

**Cat No. ARG30060**

### **Component:**

ARG10181 FSH antibody [FSH-1]

ARG10182 FSH antibody [FSH-2] (HRP)

### **Product Description:**

Follicle stimulating hormone (FSH) stimulates the development and maturation of both male and female germ cells. FSH is crucial for the small follicles to avert apoptosis. During female menstrual cycle, FSH initiates the growth of immature follicles and stimulates estradiol secretion. FSH level is increased a few days after menstrual flow when progesterone and estradiol are at low level.

FSH is produced by gonadotropic cells in pituitary gland. FSH has an  $\alpha$  subunit that is identical to the one in other glycoprotein hormones such as TSH, LH and hCG. FSH level is evaluated to help diagnosis of problems associated with reproductive system and fertility.

ARG30060 Follicle Stimulating Hormone ELISA Duos, includes a capture antibody, ARG10181 FSH antibody [FSH-1] and a HRP-conjugated tracer antibody, ARG10182 FSH antibody [FSH-2] (HRP), for studying Follicle stimulating hormone (FSH) protein expression level by ELISA.

Antibody Panels:

Best option for your experimental needs.



## Our Top Selling Items



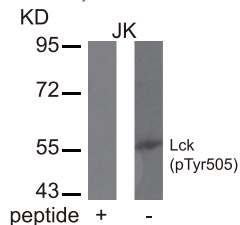
**Product name:**

**Phospho-Lck Antibody Panel (Total, pY394, pY505)**

**Cat No. ARG30150**

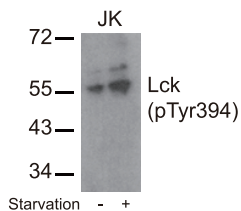
### Component:

ARG51824 Lck  
(phospho Tyr505)  
Antibody



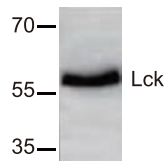
WB: JK cells with or without peptide blocking.

ARG51643  
Lck (phospho Tyr394)  
Antibody



WB: JK cells with or without starvation.

ARG20428  
Lck Antibody



WB: Rat kidney tissue lysates.

ARG65351  
Goat anti-rabbit IgG  
Antibody (HRP)



### Product Description:

The Src family of protein tyrosine kinases, which includes Src, Lyn, Fyn, Yes, Lck, Blk, and Hck, are important in the regulation of growth and differentiation of eukaryotic cells. Lck, a member of the Src family of non-receptor tyrosine protein kinases is expressed predominantly in T cells. Lck function is critical both for T-cell development in the thymus and activation of mature T cells in the periphery by antigen. The activity of Lck is regulated by phosphorylation of two conserved tyrosine residues, Tyr394 and Tyr505. Phosphorylation of Tyr505 in the carboxy-terminal tail of Lck downregulates its catalytic activity, while phosphorylation of Tyr394 leads to an increase in Lck activity. This antibody panel can be used to determine the activity of Lck by different specific phosphorylation site.

Molina, T. J. et al. (1992) Nature 357, 161-164.

Straus, D. B. et al. (1992) Cell 70, 585-593.

Chow, L. M. et al. (1993) Nature 365, 156-160.

Pascale, J. et al. (1994) Eur. J. Biochem. 224, 589-596.

James S. H. and Bartholomew M. S. (1997) J. Biol. Chem. 272, 25429-25432.

**Antibody Panels**

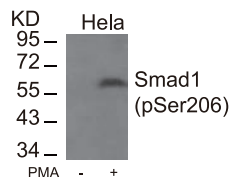
**Product name:**  
**Phospho-Smad1 for Activation/Inhibition site Antibody Panel**

**Cat No. ARG30155**

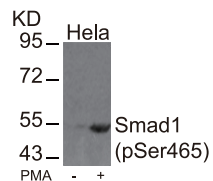
**Component:**

ARG51848 Smad1  
 (pSer 206)  
 Antibody

ARG51794 Smad1  
 (pSer 465)  
 Antibody



WB: HeLa cells with or without PMA treatment.



WB: HeLa cells with or without PMA treatment.

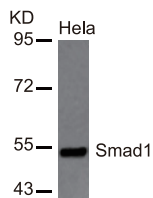
**Product Description:**

Smad transcription factors convey downstream messages from the most versatile cytokine signaling pathways in the multicellular life forms, the transforming growth factor- $\beta$  (TGF $\beta$ ) pathway. Recent works has shed light into the processes and functions of SMAD activation and deactivation, nucleocytoplasmic dynamics, and assembly of transcriptional complexes. Smad proteins consist of two globular domains coupled by a linker region. Smad1 can be phosphorylated at the linker region (pSer206) where recruitment of Smurf takes place and results in the degradation of Smad1. On the other hands, phosphorylation of Smad1 at pSer465 translocate Smad1/Smad4 complex to nucleus and transcriptionally activate target genes.

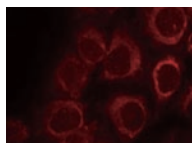
Whiteman et al. (1993) Genes Dev 12:2445-62

Massagué J et al. (2005) Genes Dev 19: 2783-2810

Sapkota et al. (2007) Mol Cell 25: 441-454

**ARG51284 Smad1 Antibody**

WB: HeLa Cell Lysates.



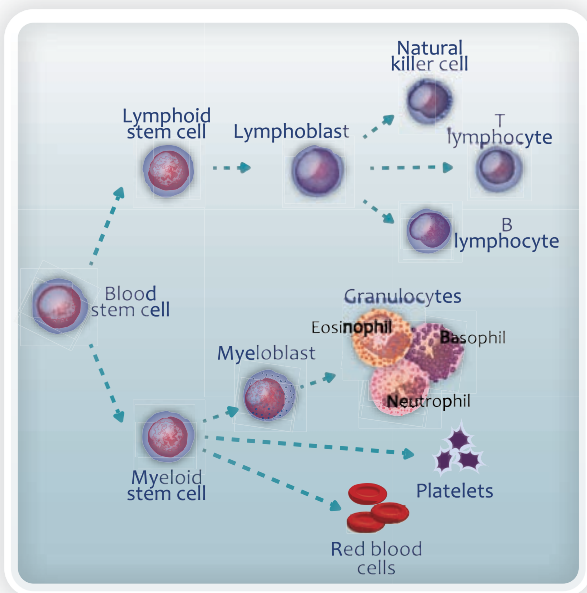
IF: Methanol-fixed HeLa cells.

ARG65351

Goat anti-rabbit IgG  
 Antibody (HRP)



## Antibody Panels



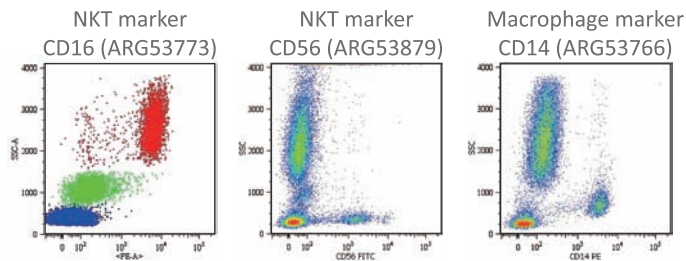
**Product name:**  
**General Lymphocyte Marker**  
**Antibody Panel**  
**(CD, CD14, CD16, CD19, CD56)**

Cat No. ARG30143

### Product Description:

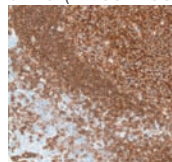
Arigo offers a wide range of markers for the study of lymphocytes. CD19 is expressed on follicular dendritic cells and B cells. CD3 is expressed on T cells and is responsible for T Cell activation. CD14 is expressed mainly by macrophages and neutrophils. CD16 and CD56 are found on the surface of natural killer cells.

Tjomsland, V. et al. (2010) PloS one 5, e13441

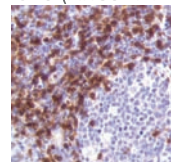


FACS: Human peripheral blood cells.

**B cell marker**  
**CD19 (ARG52708)**



**T Cell marker**  
**CD3 (ARG52742)**



IHC: Human tonsil tissues.



ARG65350  
 Goat anti-mouse IgG  
 Antibody (HRP)

ARG65351  
 Goat anti-rabbit IgG  
 Antibody (HRP)

## Antibody Panels

**Product name:**

**Germ Layer Marker Antibody Panel**

**Cat No. ARG30134**

### Product Description:

The germ layer is formed primarily during embryogenesis. Cells migrate inward along the archenteron to form the inner layer of the gastrula, which develops into the endoderm. The endoderm further derives to almost the whole digestive tube, including the lining cells of all the glands which open into the digestive tube, and the follicle lining of the thyroid gland and thymus. The mesoderm, one of the three germinal layers, consists of three important components, the paraxial mesoderm, the intermediate mesoderm and the lateral plate mesoderm. The mesoderm develops into the notochord, kidneys, gonads, cartilage, skeletal muscle, dermis, the circulatory system (including the heart and spleen), the wall of the gut, and wall of the human body. The ectoderm generates the outer layer of the embryo, and it forms from the embryo's epiblast. The ectoderm develops into the surface ectoderm, neural crest, and the neural tube.

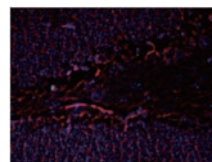
This antibody panel investigates the formation of different germ layers during embryogenesis or iPS stimulation. Tuj1 (ectoderm marker),  $\alpha$ -SMA (mesoderm marker) and AFP (endoderm marker) could be used to monitor the process of embryonic differentiation.

Katsetos, C.D. et al. (2003) J Child Neurol 18, 851-66; discussion 867.

Skalli, O. et al. (1989) J Histochem Cytochem 37: 315

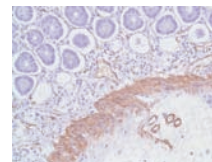
Kwon, G.S. et al. (2006) Dev Dyn 235(9): 2549–2558.

**Ectodermal Marker**  
**TUJ1 (ARG52460)**



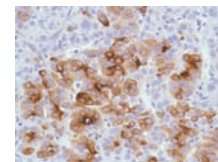
IF: Mouse dentate gyrus section.

**Mesodermal Marker**  
**SMA (ARG53568)**

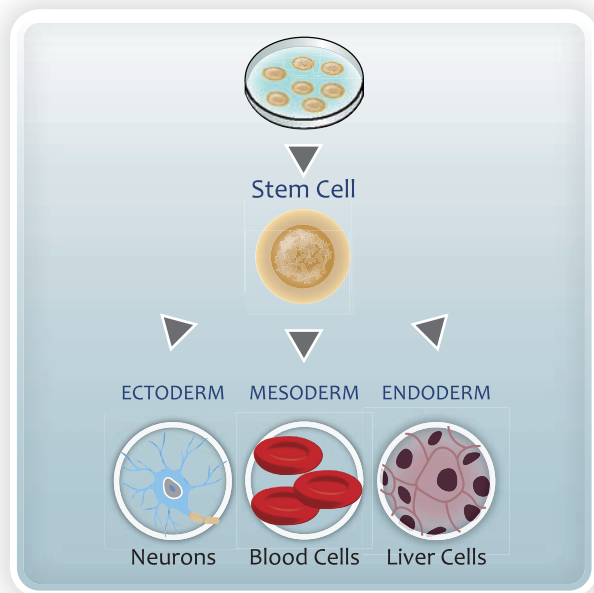


IHC: Human small intestine.

**Endodermal Marker**  
**AFP (ARG52509)**



IHC: Human Hepatocellular Carcinoma.



ARG65350  
Goat anti-mouse IgG  
Antibody (HRP)

ARG65351  
Goat anti-rabbit IgG  
Antibody (HRP)



**Product List : Antibody Duo****Antibody Duos Product List**

Cat. No.	Product Name	Cat. No. (Component)	Component Name	Application
ARG30065	Alpha Fetoprotein ELISA Antibody Duo	ARG10187	$\alpha$ Fetoprotein antibody [AFP-Y2] (HRP)	ELISA
		ARG10186	$\alpha$ Fetoprotein antibody [AFP-Y2]	ELISA, WB
ARG30081	Alzheimer's Disease Antibody Duo 1 (APP, Presenilin)	ARG53489	Presenilin antibody	IHC-P
		ARG52515	Amyloid- $\beta$ /Amyloid A4 antibody	IHC-P
ARG30020	Apoptosis Marker Antibody Duo (Bcl2, Bax)	ARG20425	Bax antibody [6A7]	WB
		ARG20424	Bcl2 antibody	IHC, IP, WB
ARG30021	Apoptosis Marker Antibody Duo (Bcl2, Bid)	ARG20055	Bid antibody	IHC-Fr, IP, WB
		ARG20424	Bcl2 antibody	IHC, IP, WB
ARG30019	Apoptosis Marker Antibody Duo (Bcl2, Casp 3)	ARG20001	Casp 3 antibody [C33]	WB
		ARG20424	Bcl2 antibody	IHC, IP, WB
ARG30105	Apoptosis Marker Antibody Duo (Casp3, PARP)	ARG20041	PARP cleaved antibody	ICC/IF, WB
		ARG20003	Casp 3 (Active) antibody	IHC-P, IHC-Fr, WB, ICC/IF
ARG30167	Autophagosome Marker Duo (Atg12, LC3A)	ARG51300	LC3A antibody	ICC/IF, WB
		ARG20296	APG12/ATG12 antibody	WB
ARG30140	BDNF and TrkB Antibody Duo	ARG20177	TrkB antibody	ICC/IF, IP, WB
		ARG20307	BDNF antibody	WB
ARG30078	Beta 2 Microglobulin ELISA Antibody Duo	ARG10207	$\beta$ 2 Microglobulin antibody [D3A2] (HRP)	ELISA
		ARG10206	$\beta$ 2 Microglobulin antibody [D2E9]	ELISA, WB, FACS, ICC/IF
ARG30064	Beta amyloid peptide 40 ELISA Antibody Duo	ARG10185	Amyloid $\beta$ peptide 40 antibody [CV9 7B10] (Biotin)	ELISA
		ARG10183	Amyloid $\beta$ peptide antibody [NT 4A2], N-terminal	ELISA
ARG30063	Beta amyloid peptide 42 ELISA Antibody Duo	ARG10184	Amyloid $\beta$ peptide 42 antibody [CA9 10C11] (Biotin)	ELISA
		ARG10183	Amyloid $\beta$ peptide antibody [NT 4A2], N-terminal	ELISA
ARG30066	Carcinoembryonic Antigen ELISA Antibody Duo	ARG10189	CEA antibody [CEA-Y2] (HRP)	ELISA
		ARG10188	CEA antibody [CEA-Y1]	ELISA, WB
ARG30092	Cell Matric Adhesion Antibody Duo (Vinculin, E-cadherin)	ARG52599	Cadherin-E/E-Cadherin antibody [SPM471]	IHC-P
		ARG53723	Vinculin antibody [SP117]	IHC-P

**Product List : Antibody Duo**

Cat. No.	Product Name	Cat. No. (Component)	Component Name	Application
ARG30133	Circulating Tumor Cells Biomarker Antibody Duo (EpCAM, HER2)	ARG51067	HER2 antibody	ICC/IF, IHC, IHC-P, WB
		ARG52970	EpCAM-ICD antibody [4A7]	IHC-P, WB
ARG30013	Colorectal Carcinoma Marker Antibody Duo (Colorectal carcinoma antibody, PKM2)	ARG61996	PKM2 antibody	ICC/IF, IHC, WB
		ARG10083	Colorectal carcinoma antibody [Y94]	ELISA
ARG30079	CRP ELISA Antibody Duo	ARG10208	CRP antibody (HRP)	ELISA
		ARG10051	C Reactive Protein antibody [63F4]	ELISA
ARG30109	Death Receptor Mediated Apoptosis Antibody Duo (Bcl2, Bcl-XL)	ARG20424	Bcl2 antibody	IHC, IP, WB
		ARG51057	BCL-XL antibody	WB
ARG30108	Death Receptor Mediated Apoptosis Antibody Duo (Bid, Casp 8)	ARG20080	Casp 8 (Active) antibody	WB
		ARG20055	Bid antibody	IHC-Fr, IP, WB
ARG30138	DNA Mismatch Repair System Antibody Duo (MSH2, MSH6)	ARG53320	MSH6 antibody [SP93]	IHC-P, WB
		ARG54160	MSH2 antibody [4G5-E11-D9]	WB
ARG30073	EGF ELISA Antibody Duo	ARG10200	EGF antibody [S-146] (HRP)	ELISA
		ARG10199	EGF antibody [S-134]	ELISA
ARG30050	EMT Study Antibody Duo (E-cadherin, Vimentin)	ARG63120	Vimentin antibody [VI-10]	FACS, ICC/IF, IHC-P, IP, WB
		ARG52595	E-Cadherin antibody	ELISA, ICC/IF, IHC-Fr, IHC-P, WB
ARG30095	Endothelial Cell Marker Antibody Duo (CD31, CD34)	ARG52756	CD34 (Endothelial Cell Marker) antibody [QBEnd/10]	IHC-P
		ARG52752	CD31 antibody [SP38]	IHC-P
ARG30100	Epigenetic Antibody Duo with c-Abl and HDAC2	ARG53126	HDAC2 antibody	IHC-P, WB
		ARG52591	c-Abl antibody	IHC, IHC-P, IP, WB
ARG30090	Epithelial Marker Antibody Duo (Muc-1, EpCAM)	ARG52970	EpCAM-ICD antibody [4A7]	IHC-P, WB
		ARG53328	MUC1 antibody	ICC/IF, IHC-P, IP, WB
ARG30060	Follicle Stimulating Hormone ELISA Antibody Duo	ARG10182	FSH antibody [FSH-2] (HRP)	ELISA
		ARG10181	FSH antibody [FSH-1]	ELISA
ARG30067	Free Prostate Specific Antigen ELISA Antibody Duo	ARG10191	Free PSA antibody [103] (HRP)	ELISA
		ARG10190	Free PSA antibody [108]	ELISA
ARG30007	GFAP Antibody Duo (Host: Goat, Rabbit)	ARG64066	GFAP antibody, C-terminal	ELISA, IHC-P, WB
		ARG52312	GFAP antibody	ICC/IF, IHC, WB
ARG30006	Glia / Neural Progenitor Marker Antibody Duo (GFAP, Nestin)	ARG52345	Nestin antibody [4D11]	ICC/IF, WB
		ARG52312	GFAP antibody	ICC/IF, IHC, WB

**Product List : Antibody Duo**

Cat. No.	Product Name	Cat. No. (Component)	Component Name	Application
ARG30087	Glial Differentiation Marker Antibody Duo (GFAP, S100 $\beta$ )	ARG53076	GFAP antibody [SPM507]	IHC-P
		ARG53540	S100 $\beta$ antibody [SP127]	IHC-P, FACS
ARG30088	Glial Differentiation Marker Antibody Duo (GFAP, Vimentin)	ARG53076	GFAP antibody [SPM507]	IHC-P
		ARG53719	Vimentin antibody [SP20]	FACS, IHC-P, WB
ARG30076	GM-CSF ELISA Antibody Duo	ARG10204	GM CSF antibody [429] (HRP)	ELISA
		ARG10032	GM-CSF antibody [59]	ELISA, WB
ARG30054	H. pylori (HP) cytotoxin associated gene A protein (CagA) Antibody Duo	ARG10170	HP CagA antibody [3C10] (HRP)	ELISA
		ARG10169	HP CagA antibody [10E9]	ELISA, WB
ARG30093	Hippocampal Development Marker (Prox1, Dcx)	ARG52266	Doublecortin antibody [3 e1]	ICC/IF, WB
		ARG52403	Prox1 antibody [5G10]	IHC
ARG30059	Human Chorionic Gonadotropin ELISA Antibody Duo	ARG10180	hCG antibody [HCG-2] (HRP)	ELISA
		ARG10179	hCG antibody [HCG-1]	ELISA
ARG30055	Human Growth Hormone ELISA Antibody Duo	ARG10172	hGH antibody [YC8] (HRP)	ELISA
		ARG10171	hGH antibody [YC6]	ELISA
ARG30053	Human Immunodeficiency Virus-1 (HIV-1) p24 ELISA Antibody Duo	ARG10168	HIV1 p24 antibody [473] (HRP)	ELISA
		ARG10167	HIV1 P24 (Core Protein) antibody [340]	ELISA, WB
ARG30075	IL16 ELISA Antibody Duo	ARG10203	IL16 antibody [323] (HRP)	ELISA
		ARG10202	IL16 antibody [398]	ELISA, WB
ARG30072	IL2 ELISA Antibody Duo	ARG10198	IL2 antibody [5A8] (HRP)	ELISA
		ARG10197	IL2 antibody [9F9]	ELISA
ARG30070	IL8 ELISA Antibody Duo	ARG10195	IL8 antibody [I8-60] (HRP)	ELISA
		ARG10005	IL8 antibody [I8-S2]	ELISA, Neut, WB
ARG30096	Lck / Phospho-ZAP70 Antibody Duo (Lck, pZAP70 Y319)	ARG20428	Lck antibody	WB, IP, IHC
		ARG51657	Zap-70 (phospho Tyr319) antibody	ICC/IF, IHC, WB
ARG30044	LCK / ZAP70 Antibody Duo	ARG20428	Lck antibody	WB, IP, IHC
		ARG65322	Zap70 antibody	WB
ARG30058	Luteinizing Hormone ELISA Antibody Duo	ARG10178	LH antibody [LH-2] (HRP)	ELISA
		ARG10177	LH antibody [LH-1]	ELISA
ARG30128	Lymphocyte Marker Antibody Duo (CD3, CD11c)(FACS)	ARG53818	CD3 antibody [MEM-57] (APC)	FACS
		ARG62720	CD11c antibody [BU15] (FITC)	FACS

**Product List : Antibody Duo**

Cat. No.	Product Name	Cat. No. (Component)	Component Name	Application
ARG30127	Lymphocyte Marker Antibody Duo (CD3, CD19)(IHC/ICC)	ARG52742	CD3 antibody [SP162]	IHC-P, WB, FACS
		ARG52706	CD19 antibody	IHC-P
ARG30071	MCP1 ELISA Antibody Duo	ARG10196	MCP1 antibody [S101] (HRP)	ELISA
		ARG10008	MCP1 / CCL-2 antibody [S14]	ELISA, Neut, WB
ARG30074	MCP3 ELISA Antibody Duo	ARG10201	MCP3 antibody [113] (HRP)	ELISA
		ARG10027	MCP3 antibody [542]	ELISA, WB
ARG30048	Mesenchymal Marker Antibody Duo (Fibronectin, Vimentin)	ARG63120	Vimentin antibody [VI-10]	FACS, ICC/IF, IHC-P, IP, WB
		ARG53974	Fibronectin antibody	IHC
ARG30091	Mesodermal Marker Antibody Duo (N-Cadherin, BMP4)	ARG52577	Bone Morphogenetic Protein 4 (BMP-4) antibody	IHC-P
		ARG52603	Cadherin-N/N-Cadherin antibody [SP90]	IHC-P, FACS
ARG30107	Mitochondria Apoptosis Initiator Antibody Duo (APAF1, Cyt-C)	ARG62461	Cyt-C antibody [6H2.B4]	ICC/IF, IHC-P, IP, WB
		ARG52529	APAF-1 antibody	IHC-P
ARG30106	Mitochondria/Caspase Dependant Apoptosis Marker Antibody Duo (Casp9, Cyt-C)	ARG20006	Cyt-C antibody	IP, WB
		ARG20048	Casp 9 active antibody	ICC/IF, IP, WB
ARG30103	Mitosis Marker Antibody Duo (Histone H3 pS10, Total)	ARG20422	Histone H3 antibody	IHC, WB
		ARG51679	Histone H3.1S10ph (pSer 10) antibody	ICC/IF, IHC, IHC-P, WB
ARG30045	Mitosis Marker Antibody Duo (Histone H3 pT11, Total)	ARG20422	Histone H3 antibody	IHC, WB
		ARG51846	Histone H3 (phospho Thr11) antibody	WB
ARG30146	Nestin and Vimentin Antibody Duo	ARG52468	Vimentin antibody	ICC/IF, IHC-Fr, WB
		ARG52345	Nestin antibody [4D11]	ICC/IF, WB
ARG30011	Neurofilament Antibody Duo (NF-H, NF-L)	ARG52348	Neurofilament NF-L antibody [DA2]	ICC/IF, IHC, WB
		ARG63075	200kDa Neurofilament heavy antibody [NF-01]	ELISA, ICC/IF, IHC-Fr, IHC-P, WB
ARG30083	Neuron Development Marker Antibody Duo (Nestin, Tau)	ARG53358	Nestin antibody [SP103]	IHC-P, WB
		ARG52441	Tau antibody	WB, ICC/IF
ARG30008	Neuron Development Marker Antibody Duo (Nestin, Tuj1)	ARG65321	Tubulin $\beta$ III antibody	WB
		ARG52345	Nestin antibody [4D11]	ICC/IF, WB
ARG30009	Neuron Marker Antibody Duo (Nestin, MAP2)	ARG52345	Nestin antibody [4D11]	ICC/IF, WB
		ARG52328	MAP2 antibody	ICC/IF, WB
ARG30010	Neuronal Cytoskeletal Antibody Duo (NF-L, TUBBIII)	ARG62683	Neuron specific $\beta$ III Tubulin antibody [TU-20]	FACS, ICC/IF, IHC
		ARG52348	Neurofilament NF-L antibody [DA2]	ICC/IF, IHC, WB



**Product List : Antibody Duo**

Cat. No.	Product Name	Cat. No. (Component)	Component Name	Application
NEW	NRF-2 Nuclear Localization Antibody Duo (NRF-2, Lamin B1)	ARG53382	NRF2 antibody	IHC, ICC/IF, WB
		ARG20013	LaminB1 antibody	ELISA, ICC/IF, IP, WB
ARG30004	Organelle Marker, Cytoplasm, Nucleus Antibody Duo (Histone, GAPDH)	ARG20422	Histone H3 antibody	IHC, WB
		ARG10112	GAPDH antibody [6C5]	ELISA, ICC/IF, IHC-Fr, IP, WB
ARG30038	Phospho-AKT Antibody Duo (pS473 pT308)	ARG51559	Akt (Phospho Thr308) antibody	ICC/IF, IHC, IHC-P, WB
		ARG51558	Akt (pSer 473) antibody	IHC, IHC-P, WB
ARG30039	Phospho-AKT Antibody Duo (Total, pS473)	ARG51558	Akt (pSer 473) antibody	IHC, IHC-P, WB
		ARG20074	Akt/PKB antibody	IHC, IP, WB
ARG30094	Phospho-Beclin Antibody Duo (pS234, pS295)	ARG52235	Beclin1 (pSer 295) antibody	WB
		ARG52234	Beclin1 (pSer 234) antibody	WB
ARG30099	Phospho- $\beta$ Catenin Antibody Duo (Total, pS37)	ARG51710	$\beta$ Catenin (pSer 37) antibody	IHC, IHC-P, WB
		ARG51192	$\beta$ Catenin antibody	ICC/IF, IHC-P, WB
ARG30179	Phospho-BRCA1 Antibody Duo (Total, pS1423)	ARG51730	BRCA1 (pSer 1423) antibody	IHC, IHC-P, WB
		ARG51129	BRCA1 antibody	ICC/IF, WB
ARG30157	Phospho-CaMKII Antibody Duo	ARG51767	CaMKII (phospho Thr286) antibody	WB
		ARG64934	CAMK2A antibody, Internal	ELISA, IHC-P, WB
ARG30084	Phospho-c-ErbB-2 Antibody Duo (Total, pY1248)	ARG52847	c-erbB-2 (Phospho Y1248) antibody	IHC-P
		ARG52849	c-erbB-2/HER-2 antibody	IHC-P
ARG30115	Phospho-c-Kit Antibody Duo (Total, pYr721)	ARG51728	c-Kit (phospho Tyr721) antibody	WB
		ARG51210	c-Kit antibody	WB
ARG30125	Phospho-c-Myc Antibody Duo (Total, pS62)	ARG51785	c-Myc (pSer 62) antibody	ICC/IF
		ARG51034	c-Myc antibody	IHC, IHC-P, WB
ARG30124	Phospho-c-Myc Antibody Duo (Total, pT58)	ARG51538	c-Myc (phospho Thr58) antibody	IHC, IHC-P, WB
		ARG51034	c-Myc antibody	IHC, IHC-P, WB
ARG30173	Phospho-Cofilin Antibody Duo (Total, pS3)	ARG51639	Cofilin (pSer 3) antibody	ICC/IF, IHC, IHC-P, WB
		ARG51149	Cofilin antibody	IHC, IHC-P, WB
ARG30024	Phospho-CREB (pS133)/ Phospho- $\beta$ Catenin (pS37) Antibody Duo	ARG51710	$\beta$ Catenin (pSer 37) antibody	IHC, IHC-P, WB
		ARG51556	CREB (pSer 133) antibody	IHC, IHC-P, WB
ARG30098	Phospho-CREB Antibody Duo (Total, pS133)	ARG51556	CREB (pSer 133) antibody	IHC, IHC-P, WB
		ARG51049	CREB antibody	IHC-P, WB

**Product List : Antibody Duo**

Cat. No.	Product Name	Cat. No. (Component)	Component Name	Application
ARG30102	Phospho-Dopamine Transporter / DAT Antibody Duo (Total, pT53)	ARG52265	Dopamine Transporter (phospho Thr53) antibody	IHC, WB
		ARG52263	Dopamine Transporter antibody, C-terminal	IHC, WB
ARG30101	Phospho-Dynamin Antibody Duo (Total, pS774)	ARG52269	Dynamin (pSer 774) antibody	ICC/IF, IHC, WB
		ARG52268	Dynamin antibody	WB
ARG30026	Phospho-Erk1/2 MAPK Antibody Duo (Total, pT202/Y204)	ARG20126	Erk1/2 (phospho Thr202/Tyr204) antibody	IHC, IP, WB
		ARG20026	Erk1/2 MAPK antibody	ICC/IF, IP, WB
ARG30025	Phospho-FAK Antibody Duo (pY576/577, pY925)	ARG51831	FAK (phospho Tyr576 Tyr577) antibody	ICC/IF, WB
		ARG51624	FAK (phospho Tyr925) antibody	ICC/IF, WB
ARG30171	Phospho-FKHR/FOXO1 Antibody Duo (Total, pS256)	ARG54056	FOXO1 antibody [3F8-H8-A10], C-terminal	WB
		ARG51617	FKHR (pSer 256) antibody	ICC/IF, IHC, IHC-P, WB
ARG30175	Phospho-FOXO4 Antibody Duo (Total, pS197)	ARG51637	FOXO4 (pSer 197) antibody	ICC/IF, IHC, IHC-P, WB
		ARG65592	FOXO4 Antibody	WB, IHC-P
ARG30097	Phospho-GSK3 $\beta$ Antibody Duo (Total, pS9)	ARG51506	GSK3 $\beta$ (pSer 9) antibody	WB, IHC-P, ICC/IF
		ARG51002	GSK3 $\beta$ antibody	ICC/IF, IHC-P, WB
ARG30034	Phospho-Her2 Antibody Duo (Total, pY1221/1222)	ARG51579	HER2 (phospho Tyr1221/Tyr1222) antibody	ICC/IF, WB
		ARG51067	HER2 antibody	ICC/IF, IHC, IHC-P, WB
ARG30037	Phospho-I kappa B $\alpha$ Antibody Duo (Total, pS32/36)	ARG51160	I kappa B $\alpha$ antibody	IHC, IHC-P, WB
		ARG51651	I kappa B $\alpha$ (pSer 32/Ser36) antibody	ICC/IF, IHC, IHC-P, WB
ARG30035	Phospho-ICAM1 Antibody Duo (Total, pY512)	ARG51586	ICAM-1 (phospho Tyr512) antibody	WB
		ARG62887	ICAM1 antibody [MEM-111]	ELISA, FACS, IHC-P, WB
ARG30042	Phospho-IRS-1 (pS307)/ Phospho-PKC theta(pS695) Antibody Duo	ARG51669	PKC theta (pSer 695) antibody	IHC, IHC-P, WB
		ARG51725	IRS-1 (pSer 307) Antibody	IHC
ARG30040	Phospho-IRS-1 Antibody Duo (pS636, pS307)	ARG51725	IRS-1 (pSer 307) Antibody	IHC
		ARG51720	IRS-1 (pSer 636) antibody	IHC, IHC-P, WB
ARG30041	Phospho-IRS-1 Antibody Duo (Total, pS636)	ARG51203	IRS-1 antibody	ICC/IF, IHC, IHC-P, WB
		ARG51720	IRS-1 (pSer 636) antibody	IHC, IHC-P, WB
ARG30178	Phospho-JAK1 Antibody Duo (Total, pY1022)	ARG51648	JAK1 (phospho Tyr1022) antibody	IHC, IHC-P, WB
		ARG51111	JAK1 antibody	IHC, IHC-P, WB
ARG30159	Phospho-Jak2 Antibody Duo (Total, pY1007)	ARG51650	JAK2 (phospho Tyr1007) antibody	IHC, IHC-P, WB
		ARG51112	JAK2 antibody	WB

**Product List : Antibody Duo**

Cat. No.	Product Name	Cat. No. (Component)	Component Name	Application
ARG30052	Phospho-mTOR Antibody Duo (Total, pS2448)	ARG51712	mTOR (pSer 2448) antibody	ICC/IF, IHC, IHC-P, WB
		ARG51194	mTOR antibody	ICC/IF, IHC, IHC-P, WB
ARG30012	Phospho-Myc Antibody Duo (pS62, pS58)	ARG51785	c-Myc (pSer 62) antibody	ICC/IF
		ARG51538	c-Myc (phospho Thr58) antibody	IHC, IHC-P, WB
ARG30030	Phospho-NFkB Antibody Duo (pS276, pS536)	ARG51515	NFkB-p65 (pSer 276) Antibody	WB, IHC, ICC/IF
		ARG51518	NFkB p65 (pSer 536) antibody	ICC/IF, IHC, IHC-P, WB
ARG30029	Phospho-NFkB Antibody Duo (pS529, pS536)	ARG51708	NFkB p65 (pSer 529) antibody	ICC/IF, IHC, IHC-P, WB
		ARG51518	NFkB p65 (pSer 536) antibody	ICC/IF, IHC, IHC-P, WB
ARG30031	Phospho-NFkB Antibody Duo (Total, pS536)	ARG20427	NFkB p65 antibody [2A12A7]	IHC, IP, WB
		ARG51518	NFkB p65 (pSer 536) antibody	ICC/IF, IHC, IHC-P, WB
ARG30164	Phospho-p38 MAPK Ab Duo (Total, pThr180/Tyr182)	ARG20124	p38 MAPK (phospho Thr180/Tyr182) antibody	IHC, IP, WB
		ARG54444	p38 antibody	IP, WB
ARG30032	Phospho-p53 Antibody Duo (pS33, pS46)	ARG51601	p53 (pSer 46) antibody	ICC/IF, WB
		ARG51599	p53 (pSer 33) antibody	ICC/IF, WB
ARG30176	Phospho-p90RSK Antibody Duo (Total, pT348)	ARG51607	p90RSK (phospho Thr348) antibody	ICC/IF, IHC, IHC-P, WB
		ARG51125	p90RSK antibody	ICC/IF, WB
ARG30014	Phospho-PKM2 Antibody Duo (Total, pS37)	ARG51804	PKM2 (PhosphoSer37) Antibody	ICC/IF, WB
		ARG61996	PKM2 Antibody	ICC/IF, IHC, WB
ARG30036	Phospho-PTEN Antibody Duo (pS370, pS380/T382/T383)	ARG51565	PTEN (PhosphoSer370) Antibody	WB, IHC, ICC/IF
		ARG51560	PTEN (pSer 380/Thr382/Thr383) antibody	ICC/IF, IHC, IHC-P, WB
ARG30046	Phospho-RB Antibody Duo (Total, pS807)	ARG51632	Rb (pSer 807) antibody	IHC, IHC-P, WB
		ARG51103	Rb antibody	IHC, IHC-P, WB
ARG30089	Phospho-S6 Ribosomal Antibody Duo (Total, P235/236)	ARG53546	S6 Ribosomal (Paired 235/236) antibody	IHC-P, WB
		ARG53544	S6 Ribosomal antibody	IHC-P, WB
ARG30177	Phospho-STAT1 Antibody Duo (Total, pY701)	ARG51548	STAT1 (phospho Tyr701) antibody	IHC, IHC-P, WB
		ARG54154	STAT1 antibody [6C2-F7-D12]	WB, IP
ARG30028	Phospho-STAT3 Antibody Duo (pS705, pS727)	ARG51550	STAT3 (pSer 727) antibody	ICC/IF, IHC, IHC-P, WB
		ARG51549	STAT3 (phospho Tyr705) antibody	IHC, IHC-P, WB
ARG30027	Phospho-STAT3 Antibody Duo (Total, pS727)	ARG20426	Stat3 antibody	WB
		ARG51550	STAT3 (pSer 727) antibody	ICC/IF, IHC, IHC-P, WB

**Product List : Antibody Duo**

Cat. No.	Product Name	Cat. No. (Component)	Component Name	Application
ARG30180	Phospho-STAT5A Antibody Duo (Total, pS780)	ARG51553	STAT5A (pSer 780) antibody	WB, IHC-P
		ARG65593	STAT5A Antibody	WB, IHC-P
ARG30112	Phospho-VEGFR2 Antibody Duo (Total, pY1175)	ARG51587	VEGFR2 (phospho Tyr1175) antibody	ICC/IF, IHC-P
		ARG51073	VEGFR2 antibody	ICC/IF, IHC, IHC-P, WB
ARG30043	Phospho-ZAP70 Antibody Duo (pY319, pY493)	ARG51658	Zap-70 (phospho Tyr493) antibody	IHC, IHC-P, WB
		ARG51657	Zap-70 (phospho Tyr319) antibody	ICC/IF, IHC, WB
ARG30033	Phospho-ZAP70 Antibody Duo (Total, pY319)	ARG65322	Zap70 antibody	WB
		ARG51657	Zap-70 (phospho Tyr319) antibody	ICC/IF, IHC, WB
ARG30022	PPARs Study Antibody Duo (PPAR $\alpha$ , PPAR $\gamma$ )	ARG51457	PPAR $\gamma$ antibody	WB
		ARG20170	PPAR $\alpha$ antibody	WB
ARG30057	Prolactin ELISA Antibody Duo	ARG10176	PRL antibody [PRL-2] (HRP)	ELISA
		ARG10175	PRL antibody [PRL-1]	ELISA
ARG30005	Proliferation Marker Antibody Duo (Ki67, BrdU)	ARG63121	BrdU antibody [MoBu-1]	FACS, ICC/IF, IHC, IHC-P
		ARG53222	Ki67 antibody [SP6]	ICC/IF, IHC-Fr, WB, IHC-P
ARG30068	Prostate Specific Antigen ELISA Antibody Duo	ARG10193	PSA antibody [CHYH2] (HRP)	ELISA
		ARG10192	PSA antibody [CHYH1]	ELISA, WB, IHC
ARG30017	Protein Phosphorylation Study Antibody Duo (Phospho-Ser, Phospho-AA)	ARG53460	Phosphoserine/threonine/tyrosine antibody [SPM101]	IHC, ICC/IF, FACS, ELISA, WB, IP
		ARG62596	Phosphoserine antibody [106.1]	WB
ARG30086	Regulatory T cells Marker Antibody Duo (FoxP3, CD4)	ARG52768	CD4 antibody [SP35]	FACS, IHC-P
		ARG53050	FOXP3 antibody [SP97]	IHC-P
ARG30077	SAA ELISA Antibody Duo	ARG10205	SAA antibody [607] (HRP)	ELISA
		ARG10045	Serum Amyloid A antibody [115]	ELISA, WB
ARG30051	Smooth Muscle Marker Antibody Duo (Desmin, SMA)	ARG63621	Smooth muscle $\alpha$ -actin antibody, N-terminal	ELISA, ICC/IF, WB, IHC-P
		ARG52941	Desmin antibody	IHC, IHC-P, IP, WB
ARG30080	Stem Cell Marker Antibody Duo 1 (Oct4, Sox2)	ARG53393	OCT-3/OCT-4 antibody	IHC-P
		ARG53588	SOX-2 antibody [SP76]	IHC-P, WB
ARG30154	Suprachiasmatic Nuclei (SCN) Marker Antibody Duo	ARG62659	Vasopressin antibody	IHC-P, WB
		ARG62658	VIP antibody	IHC-Fr, IHC-P
ARG30049	SyK / Zap70 Antibody Duo	ARG65322	Zap70 antibody	WB
		ARG62632	Syk antibody [4D10.1]	IHC-P, IP, WB

**Product List : Antibody Duo**

Cat. No.	Product Name	Cat. No. (Component)	Component Name	Application
ARG30016	T / Tn Antigen Antibody Duo (T , Tn)	ARG53970	Tn antigen antibody [Tn 218]	ICC/IF, IHC-Fr, IHC-P
		ARG62636	CD176 antibody [A78-G/A7]	ICC/IF, IHC-P
ARG30163	T Cell Intercellular Adhesion Molecule Duo (CD226, PVR)	ARG65591	PVR Antibody	ELISA, WB, IHC-P
		ARG65590	CD226 Antibody	ELISA, IHC-P
ARG30003	Tag Internal Control Antibody Duo (DDDK tag, $\beta$ Actin)	ARG62346	Actin antibody [BA3R]	ELISA, FACS, ICC/IF, IP, WB
		ARG62986	DDDDK tag antibody [F-tag-01]	ICC/IF, IP, WB
ARG30061	Tag Internal Control Antibody Duo (dsRed, GAPDH)	ARG20305	RFP (dsRed) antibody	ICC/IF, IP, WB
		ARG10112	GAPDH antibody [6C5]	ELISA, ICC/IF, IHC-Fr, IP, WB
ARG30001	Tag Internal Control Antibody Duo (GFP, GAPDH)	ARG62343	GFP antibody [GF28R]	ELISA, ICC/IF, IP, WB
		ARG10112	GAPDH antibody [6C5]	ELISA, ICC/IF, IHC-Fr, IP, WB
ARG30002	Tag Internal Control Antibody Duo (His tag, GAPDH)	ARG62337	6x His tag antibody [HIS.H8]	ICC/IF, ELISA, Dot, WB, IP, EMSA
		ARG10112	GAPDH antibody [6C5]	ELISA, ICC/IF, IHC-Fr, IP, WB
ARG30062	Tag Internal Control Antibody Duo (YFP, GAPDH)	ARG20304	YFP antibody	WB
		ARG10112	GAPDH antibody [6C5]	ELISA, ICC/IF, IHC-Fr, IP, WB
ARG30056	Thyroid Stimulating Hormone ELISA Antibody Duo	ARG10174	TSH antibody [TSH-2] (HRP)	ELISA
		ARG10173	TSH antibody [TSH-1]	ELISA
ARG30085	Tight Junction Antibody Duo 2 (Claudin-1, Occludin)	ARG53386	Occludin antibody	IHC-P, WB
		ARG52869	Claudin 1 antibody	IHC-P, WB
ARG30015	Tn Antigen Antibody Duo (sTn, Tn)	ARG53970	Tn antigen antibody [Tn 218]	ICC/IF, IHC-Fr, IHC-P
		ARG53971	Sialosyl-Tn antigen antibody [STn 219]	AF, ICC/IF, IHC-Fr, IHC-P
ARG30069	TNF $\alpha$ ELISA Antibody Duo	ARG10194	TNF $\alpha$ (Tracer) antibody [B1E4] (HRP)	ELISA
		ARG10001	TNF $\alpha$ antibody [CH8820]	ELISA, IHC, Neut
ARG30023	Tumor Marker Study Antibody Duo (B2M, Vimentin)	ARG63120	Vimentin antibody [VI-10]	FACS, ICC/IF, IHC-P, IP, WB
		ARG62678	$\beta$ 2 Microglobulin antibody [B2M-01]	ELISA, FACS, ICC/IF, IP, RIA, WB
ARG30047	Tumor Marker Study Antibody Duo (SMA, Vimentin)	ARG63621	Smooth muscle $\alpha$ -actin antibody, N-terminal	ELISA, ICC/IF, WB, IHC-P
		ARG52468	Vimentin antibody	ICC/IF, IHC-Fr, WB
ARG30018	Tumor Therapeutic Analysis Antibody Duo (WT1, Ki67)	ARG53729	Wilms Tumor 1 antibody	IHC, IHC-P, IP, WB
		ARG53222	Ki67 antibody [SP6]	ICC/IF, IHC-Fr, WB, IHC-P
ARG30137	White / Brown Fat Cell Marker Antibody Duo (Adiponectin, UCP1)	ARG63944	UCP1 antibody, C-terminal	ELISA, WB
		ARG20409	Adiponectin antibody	IP, WB

## Antibody Panels Product List



Cat. No.	Product Name	Cat. No. (Component)	Component Name	Application
ARG30116	14-3-3 Family Antibody Panel (14-3-3 beta, 14-3-3 sigma, 14-3-3 tau, 14-3-3 zeta)	ARG64363	14-3-3 tau / YWHAQ antibody, Internal	ELISA, WB
		ARG63881	14-3-3 sigma / Stratifin antibody, Internal	ELISA, IHC-P, WB
		ARG52473	14-3-3 $\beta$ antibody	IHC-P, IP, WB
		ARG51169	14-3-3 zeta antibody	IHC, IHC-P, WB
		ARG65352	Donkey anti-Goat IgG antibody (HRP)	ELISA, IHC, WB
		ARG65351	Goat anti-Rabbit IgG antibody (HRP)	ELISA, IHC, WB
ARG30147	Alzheimer's Disease Related Protein Antibody Panel (APP, Tau total, Tau T181 T231, $\alpha$ Synuclein)	ARG53628	$\alpha$ Synuclein antibody	IHC, IHC-P
		ARG51612	Tau (phospho Thr231) antibody	IHC, IHC-P, WB
		ARG51609	Tau (phospho Thr181) antibody	IHC-P, WB
		ARG51094	Tau antibody	IHC, IHC-P, WB
		ARG52513	Amyloid Precursor Protein antibody	IHC-P, WB
		ARG65350	Goat anti-Mouse IgG antibody (HRP)	ELISA, IHC, WB
ARG30165	Bcl-2 family (Pro-apoptotic) Antibody Panel	ARG54440	PUMA antibody, N-terminal	IHC-P, WB
		ARG64942	NOXA antibody, Internal	ELISA, WB
		ARG20055	Bid antibody	IHC-Fr, IP, WB
		ARG51252	BIM antibody	IHC, IHC-P, WB
		ARG20010	Bok antibody	WB
		ARG51060	BAD antibody	IHC, IHC-P, WB
		ARG63187	BAK1 antibody, N-terminal	ELISA, WB
		ARG54441	Bax antibody [6A7]	WB
		ARG65350	Goat anti-Mouse IgG antibody (HRP)	ELISA, IHC, WB
		ARG65352	Donkey anti-Goat IgG antibody (HRP)	ELISA, IHC, WB
		ARG65351	Goat anti-Rabbit IgG antibody (HRP)	ELISA, IHC, WB

**Product List : Antibody Panel**

Cat. No.	Product Name	Cat. No. (Component)	Component Name	Application
ARG30142	Cardiomyocyte Cell Surface Marker Antibody Panel (Cx43, Desmin, SIRP)	ARG62623	SIRP $\alpha$ antibody	WB
		ARG52941	Desmin antibody	IHC, IHC-P, IP, WB
		ARG51225	Connexin 43 antibody	IHC, IHC-P, WB
		ARG65351	Goat anti-Rabbit IgG antibody (HRP)	ELISA, IHC, WB
ARG30139	Cell Cycle Marker Antibody Panel (Cyclin A, Cyclin B1, Cyclin E)	ARG51679	Histone H3.1S10ph (pSer 10) antibody	ICC/IF, IHC, IHC-P, WB
		ARG62456	Cyclin B1 antibody [V152]	FACS, IHC-P, WB
		ARG62455	Cyclin A antibody	IP, WB
		ARG52927	Cyclin E antibody	IHC-P
		ARG65351	Goat anti-Rabbit IgG antibody (HRP)	ELISA, IHC, WB
		ARG65350	Goat anti-Mouse IgG antibody (HRP)	ELISA, IHC, WB
ARG30160	Chondrogenesis Marker Antibody Panel	ARG63341	FOXC1 antibody, C-terminal	ELISA, IHC, IHC-P, WB
		ARG63332	FOXC2 antibody, C-terminal	ELISA, IHC-P, WB
		ARG62852	CD44 antibody [MEM-263]	FACS, IP, WB
		ARG53593	SOX-9 antibody	IHC-P
		ARG65350	Goat anti-Mouse IgG antibody (HRP)	ELISA, IHC, WB
		ARG65352	Donkey anti-Goat IgG antibody (HRP)	ELISA, IHC, WB
ARG30162	Cytotoxic T Cell Surface Marker Antibody Panel (FACS)	ARG65351	Goat anti-Rabbit IgG antibody (HRP)	ELISA, IHC, WB
		ARG62855	CD45 antibody [MEM-28] (Biotin)	FACS, ICC/IF
		ARG53814	CD28 antibody [CD28.2] (APC)	FACS, ICC, IHC-Fr, IP, WB, Functional Assay
		ARG62889	CD54 antibody [1H4] (FITC)	FACS, ICC/IF, IHC-Fr, IHC-P, WB
ARG30141	DNA Damage Response Antibody Panel (Chk1 pS280, Chk2 pS516, H2Ax pS139, p53 pS15 pS37)	ARG62928	CD8 antibody [MEM-31]	FACS, IP
		ARG51646	Chk2 (pSer 516) antibody	WB
		ARG51640	Chk1 (pSer 280) antibody	WB
		ARG51600	p53 (pSer 37) antibody	ICC/IF, WB
		ARG51596	p53 (pSer 15) antibody	ICC/IF, IHC, IHC-P, WB
		ARG51752	Histone H2A.XS139ph (pSer 139) antibody	ICC/IF, WB
		ARG51623	ATM (pSer 1981) antibody	IHC, IHC-P, WB
		ARG65351	Goat anti-Rabbit IgG antibody (HRP)	ELISA, IHC, WB

**Product List : Antibody Panel**

Cat. No.	Product Name	Cat. No. (Component)	Component Name	Application
ARG30130	Endosome, Lysosome, Peroxisome Marker Antibody Panel (Catalase, Caveolin1, Clathrin heavy chain, LAMP1)	ARG63969	Catalase antibody, Internal	ELISA, IHC-P, WB
		ARG52327	LAMP1 antibody [5H6]	WB, ICC/IF
		ARG53919	Clathrin heavy chain antibody [BF-06]	ELISA, FACS, ICC/IF, IP, WB
		ARG52657	Caveolin-1 antibody	IHC-P
		ARG65351	Goat anti-Rabbit IgG antibody (HRP)	ELISA, IHC, WB
		ARG65350	Goat anti-Mouse IgG antibody (HRP)	ELISA, IHC, WB
ARG30143	General Lymphocyte Marker Antibody Panel (CD, CD14, CD16, CD19, CD56)	ARG53879	CD56 antibody [MEM-188] (PerCP)	FACS, IHC-P, IP
		ARG53773	CD16 antibody [MEM-154] (PE)	FACS, IP, WB, Functional Assay
		ARG53766	CD14 antibody [MEM-15] (APC)	FACS, IP
		ARG52742	CD3 antibody [SP162]	IHC-P, WB, FACS
		ARG52708	CD19 antibody [SP110]	IHC-P, FACS
		ARG65351	Goat anti-Rabbit IgG antibody (HRP)	ELISA, IHC, WB
		ARG65350	Goat anti-Mouse IgG antibody (HRP)	ELISA, IHC, WB
		ARG52509	$\alpha$ -Fetoprotein (AFP) antibody [SP154]	IHC-P, WB
ARG30134	Germ Layer Marker Antibody Panel (AFP, TUJ1, SMA)	ARG53568	SMA antibody	IHC-P
		ARG52460	TUJ1 antibody [AA10]	ICC/IF, IHC, WB
		ARG65351	Goat anti-Rabbit IgG antibody (HRP)	ELISA, IHC, WB
		ARG65350	Goat anti-Mouse IgG antibody (HRP)	ELISA, IHC, WB
		ARG53088	GLUT-1 antibody [SP168]	IHC-P, WB
ARG30152	Glucose uptake: Adrenoceptor Dependent Pathway Antibody Panel (GLUT1, mTOR pS2448, RICTOR)	ARG63778	RICTOR antibody, C-terminal	ELISA, IHC-P
		ARG51712	mTOR (pSer 2448) antibody	ICC/IF, IHC, IHC-P, WB
		ARG65352	Donkey anti-Goat IgG antibody (HRP)	ELISA, IHC, WB
		ARG65351	Goat anti-Rabbit IgG antibody (HRP)	ELISA, IHC, WB
		ARG65292	SLC2A4 / GLUT4 antibody, C-terminal	ELISA, WB
ARG30151	Glucose uptake: Insulin Receptor Dependent Pathway Antibody Panel (GLUT4, AKT pS473, IRS1 pS636)	ARG51558	Akt (pSer 473) antibody	IHC, IHC-P, WB
		ARG51720	IRS-1 (pSer 636) antibody	IHC, IHC-P, WB
		ARG65352	Donkey anti-Goat IgG antibody (HRP)	ELISA, IHC, WB
		ARG65351	Goat anti-Rabbit IgG antibody (HRP)	ELISA, IHC, WB



**Product List : Antibody Panel**

Cat. No.	Product Name	Cat. No. (Component)	Component Name	Application
ARG30123	HDAC Family Antibody Panel (HDAC1, HDAC4, HDAC5, HDAC6, HDAC7, HDAC8)(IP)	ARG20185	HDAC8 antibody	IHC, IP, WB
		ARG20184	HDAC7 antibody	ChIP assay, IHC-Fr, WB
		ARG20183	HDAC6 antibody	ChIP assay, IHC-P, WB
		ARG20182	HDAC5 antibody	IHC-P, IP, WB
		ARG20181	HDAC4 antibody	WB, ChIP assay
		ARG20180	HDAC1 antibody	IHC, IP, WB
		ARG65351	Goat anti-Rabbit IgG antibody (HRP)	ELISA, IHC, WB
ARG30135	Hematopoietic Stem Cell Marker Antibody Panel (ABCG2, CD34, Prominin1)	ARG51346	ABCG2 / CD338 antibody	WB
		ARG54138	Prominin-1 antibody [6H10-F1-C11]	WB
		ARG62820	CD34 antibody [4H11(APG)]	Blocking, FACS, ICC/IF
		ARG65351	Goat anti-Rabbit IgG antibody (HRP)	ELISA, IHC, WB
		ARG65350	Goat anti-Mouse IgG antibody (HRP)	ELISA, IHC, WB
ARG30121	Immature B Cell Marker Antibody Panel (CD19, CD20, CD22, IgM Fc)(FACS)	ARG62775	CD22 antibody [MEM-01]	FACS, IP, WB
		ARG62767	CD20 antibody [MEM-97]	FACS, IP, WB
		ARG52708	CD19 antibody [SP110]	IHC-P, FACS
		ARG63040	IgM Fc fragment antibody [CH2]	ELISA, FACS, ICC/IF, WB
		ARG65351	Goat anti-Rabbit IgG antibody (HRP)	ELISA, IHC, WB
		ARG65350	Goat anti-Mouse IgG antibody (HRP)	ELISA, IHC, WB
ARG30145	Intermediate Neurofilament Antibody Panel (NF-L, NF-M,NF-H)	ARG52347	Neurofilament NF-H antibody	ICC/IF, IHC, WB
		ARG52351	Neurofilament NF-M antibody	ICC/IF, IHC, WB
		ARG52348	Neurofilament NF-L antibody [DA2]	ICC/IF, IHC, WB
		ARG65350	Goat anti-Mouse IgG antibody (HRP)	ELISA, IHC, WB
ARG30158	Jak2/Stat3 pathway Antibody Panel	ARG51549	STAT3 (phospho Tyr705) antibody	IHC, IHC-P, WB
		ARG20426	Stat3 antibody	WB
		ARG51650	JAK2 (phospho Tyr1007) antibody	IHC, IHC-P, WB
		ARG51112	JAK2 antibody	WB
		ARG65351	Goat anti-Rabbit IgG antibody (HRP)	ELISA, IHC, WB

**Product List : Antibody Panel**

Cat. No.	Product Name	Cat. No. (Component)	Component Name	Application
ARG30117	Loading Control Antibody Panel (Actin, $\beta$ Tublin, Histone H3, GAPDH)	ARG20422	Histone H3 antibody	IHC, WB
		ARG62346	Actin antibody [BA3R]	ELISA, FACS, ICC/IF, IP, WB
		ARG62347	$\beta$ Tubulin antibody [BT7R]	Dot, ELISA, ICC/IF, WB
		ARG10112	GAPDH antibody [6C5]	ELISA, ICC/IF, IHC-Fr, IP, WB
		ARG65351	Goat anti-Rabbit IgG antibody (HRP)	ELISA, IHC, WB
		ARG65350	Goat anti-Mouse IgG antibody (HRP)	ELISA, IHC, WB
ARG30111	Mitochondria/Caspase dependant Apoptosis Antibody Panel (APAF1, Casp 9, COX4, Cyt-C) (Immunostaining)	ARG54003	COX IV antibody [4D11-B3-E8]	FACS, ICC/IF, IHC, IP, WB
		ARG20048	Casp 9 active antibody	ICC/IF, IP, WB
		ARG52529	APAF-1 antibody	IHC-P
		ARG52933	Cyt-C antibody	IHC-P
		ARG65351	Goat anti-Rabbit IgG antibody (HRP)	ELISA, IHC, WB
		ARG65350	Goat anti-Mouse IgG antibody (HRP)	ELISA, IHC, WB
ARG30110	Mitochondria/Caspase dependant Apoptosis Antibody Panel (Casp 3, Casp 9, Cyt-C, PARP) (WB)	ARG20041	PARP cleaved antibody	ICC/IF, WB
		ARG20003	Casp 3 (Active) antibody	IHC-P, IHC-Fr, WB, ICC/IF
		ARG20048	Casp 9 active antibody	ICC/IF, IP, WB
		ARG20006	Cyt-C antibody	IP, WB
		ARG65351	Goat anti-Rabbit IgG antibody (HRP)	ELISA, IHC, WB
		ARG53128	Heat Shock Protein 60 (HSP60) antibody	IHC-P, WB
ARG30129	Mitochondrial Marker Antibody Panel (Cyt-C, COX4, HSP60)	ARG54003	COX IV antibody [4D11-B3-E8]	FACS, ICC/IF, IHC, IP, WB
		ARG52933	Cyt-C antibody	IHC-P
		ARG65350	Goat anti-Mouse IgG antibody (HRP)	ELISA, IHC, WB
		ARG65351	Goat anti-Rabbit IgG antibody (HRP)	ELISA, IHC, WB
ARG30161	Mucin Family Antibody Panel	ARG53332	MUC-4 antibody [SP241]	IHC-P
		ARG53336	Mucin-2/MUC-2 antibody [SPM512]	IHC-P
		ARG53334	Mucin 5AC antibody [45M1 / SPM297]	IHC-P
		ARG53328	MUC1 antibody	ICC/IF, IHC-P, IP, WB
		ARG65350	Goat anti-Mouse IgG antibody (HRP)	ELISA, IHC, WB
		ARG65351	Goat anti-Rabbit IgG antibody (HRP)	ELISA, IHC, WB

**Product List : Antibody Panel**

Cat. No.	Product Name	Cat. No. (Component)	Component Name	Application
ARG30166	Phospho-AMPK Antibody Panel	ARG51678	AMPK $\alpha$ 1 / $\alpha$ 2(pThr 174/172) antibody	WB, IHC-P
		ARG51172	AMPK $\alpha$ 1/AMPK $\alpha$ 2 antibody	ICC/IF, IHC, IHC-P, WB
		ARG51670	AMPK $\alpha$ 1 (pSer 487)antibody	ICC/IF, IHC, IHC-P, WB
		ARG51120	AMPK $\alpha$ 1 antibody	IHC, IHC-P, WB
		ARG65351	Goat anti-Rabbit IgG antibody (HRP)	ELISA, IHC, WB
ARG30168	Phospho-Bad Antibody Panel	ARG51572	BAD (pSer 155) antibody	WB, IHC
		ARG51571	BAD (pSer 136) antibody	IHC-P, WB
		ARG51570	BAD (pSer 112) antibody	IHC-P, WB
		ARG51060	BAD antibody	IHC, IHC-P, WB
		ARG65351	Goat anti-Rabbit IgG antibody (HRP)	ELISA, IHC, WB
ARG30144	phospho- $\beta$ catenin Antibody Panel (Total, pS33, pS37, pT41/pS45)	ARG51618	$\beta$ Catenin (phospho Thr41/Ser45) antibody	WB
		ARG51710	$\beta$ Catenin (pSer 37) antibody	IHC, IHC-P, WB
		ARG51709	$\beta$ Catenin (pSer 33) antibody	ICC/IF, IHC, IHC-P, WB
		ARG52651	Catenin- $\beta$ antibody	IHC-P, WB
		ARG65351	Goat anti-Rabbit IgG antibody (HRP)	ELISA, IHC, WB
ARG30126	Phospho-c-Myc Antibody Panel (Total, pT58, pS62, )	ARG51785	c-Myc (pSer 62) antibody	ICC/IF
		ARG51538	c-Myc (phospho Thr58) antibody	IHC, IHC-P, WB
		ARG51034	c-Myc antibody	IHC, IHC-P, WB
		ARG65351	Goat anti-Rabbit IgG antibody (HRP)	ELISA, IHC, WB
ARG30132	Phospho-GluR1 Antibody Panel	ARG52315	GluR1-Subunit (pSer 831) antibody	WB
		ARG52316	GluR1-Subunit (pSer 845) antibody	ICC/IF, IHC, WB
		ARG52314	GluR1 antibody	WB
		ARG65351	Goat anti-Rabbit IgG antibody (HRP)	ELISA, IHC, WB
		ARG65350	Goat anti-Mouse IgG antibody (HRP)	ELISA, IHC, WB
ARG30149	Phospho-GSK3 $\beta$ Antibody Panel (Total, pS9, pY216)	ARG51777	GSK3 $\beta$ (phospho Tyr216) antibody	IHC-Fr, ICC/IF, WB, IHC-P
		ARG51506	GSK3 $\beta$ (pSer 9) antibody	WB, IHC-P, ICC/IF
		ARG20144	GSK-3 $\beta$ antibody	IHC, WB
		ARG65351	Goat anti-Rabbit IgG antibody (HRP)	ELISA, IHC, WB

**Product List : Antibody Panel**

Cat. No.	Product Name	Cat. No. (Component)	Component Name	Application
ARG30153	Phospho-Hsp27 Antibody Panel (Total, pS15, pS78, pS82)	ARG51735	HSP27 (pSer 82) antibody	IHC, IHC-P, WB
		ARG51734	HSP27 (pSer 78) antibody	ICC/IF, IHC, IHC-P, WB
		ARG51662	HSP27 (pSer 15) antibody	ICC/IF, IHC, IHC-P, WB
		ARG20027	Hsp27 antibody	ELISA, ICC/IF, IP, WB
		ARG65351	Goat anti-Rabbit IgG antibody (HRP)	ELISA, IHC, WB
ARG30150	Phospho-Lck Antibody Panel (Total, pY394, pY505)	ARG51824	Lck (phospho Tyr505) antibody	WB
		ARG51643	Lck (phospho Tyr394) antibody	WB
		ARG20428	Lck antibody	WB, IP, IHC
		ARG65351	Goat anti-Rabbit IgG antibody (HRP)	ELISA, IHC, WB
ARG30172	Phospho-LIMK Antibody Panel	ARG51628	LIMK2 (phospho Thr505) antibody	ICC/IF, IHC, IHC-P, WB
		ARG20169	LIMK2 antibody	WB
		ARG51627	LIMK1 (phospho Thr508) antibody	ICC/IF, IHC, IHC-P, WB
		ARG20122	LIMK1 antibody	IP, WB
		ARG65351	Goat anti-Rabbit IgG antibody (HRP)	ELISA, IHC, WB
ARG30155	Phospho-Smad1 for Activation/ Inhibition site Antibody Panel	ARG51794	Smad1 (pSer 465) antibody	WB
		ARG51848	Smad1 (pSer 206) antibody	WB
		ARG51284	Smad1 antibody	ICC/IF, WB
		ARG65351	Goat anti-Rabbit IgG antibody (HRP)	ELISA, IHC, WB
ARG30170	Phospho-Src Antibody Panel	ARG51652	Src (phospho Tyr529) antibody	ICC/IF, IHC, IHC-P, WB
		ARG51594	Src (phospho Tyr418) antibody	WB, IHC
		ARG62626	SRC1 antibody [SRC01 (GT12)]	ICC/IF, IHC-P, WB
		ARG65351	Goat anti-Rabbit IgG antibody (HRP)	ELISA, IHC, WB
		ARG65350	Goat anti-Mouse IgG antibody (HRP)	ELISA, IHC, WB
ARG30136	Phospho-STAT Antibody Panel (STAT1 pY701, STAT2 pY690, STAT3 pS727 pY705, STAT5A pY694, STAT6 pY641)	ARG51554	STAT6 (phospho Tyr641) antibody	IHC, IHC-P, WB
		ARG51552	STAT5A (phospho Tyr694) antibody	IHC, IHC-P, WB
		ARG51549	STAT3 (phospho Tyr705) antibody	IHC, IHC-P, WB
		ARG51550	STAT3 (pSer 727) antibody	ICC/IF, IHC, IHC-P, WB
		ARG51823	STAT2 (phospho Tyr690) antibody	WB
		ARG51548	STAT1 (phospho Tyr701) antibody	IHC, IHC-P, WB
		ARG65351	Goat anti-Rabbit IgG antibody (HRP)	ELISA, IHC, WB

**Product List : Antibody Panel**

Cat. No.	Product Name	Cat. No. (Component)	Component Name	Application
ARG30122	Polycomb Complexes Antibody Panel (H3K27me3, EZH2, Ring1A, RNF2)	ARG53004	EZH2 antibody	IHC-P
		ARG63505	RNF2 / dinG antibody, C-terminal	ELISA, WB
		ARG51437	Ring1A antibody	WB
		ARG51851	Histone H3 (Tri-Methyl-Lys27) antibody	WB, IHC, ICC/IF
		ARG65352	Donkey anti-Goat IgG antibody (HRP)	ELISA, IHC, WB
		ARG65351	Goat anti-Rabbit IgG antibody (HRP)	ELISA, IHC, WB
ARG30131	Postsynaptic Receptor Antibody Panel (NDMAR2A, NMDAR2B, GluR1)	ARG52314	GluR1 antibody	WB
		ARG52363	NMDAR2B antibody	ICC/IF, IHC, IP, WB
		ARG52358	NDMAR2A antibody	IHC, IP, WB
		ARG65351	Goat anti-Rabbit IgG antibody (HRP)	ELISA, IHC, WB
		ARG65350	Goat anti-Mouse IgG antibody (HRP)	ELISA, IHC, WB
ARG30120	Pre-B Cell Marker Antibody Panel (CD19, CD25, CD38, CD40, CD45)(FACS)	ARG62839	CD40 antibody [HI40a] (FITC)	FACS
		ARG52764	CD38 antibody [SP149]	FACS, IHC-P
		ARG52708	CD19 antibody [SP110]	IHC-P, FACS
		ARG53801	CD25 antibody [MEM-181] (PE)	FACS
		ARG62856	CD45 antibody [MEM-28]	FACS, ICC/IF, IHC, IHC-P, IP, WB
		ARG65351	Goat anti-Rabbit IgG antibody (HRP)	ELISA, IHC, WB
		ARG65350	Goat anti-Mouse IgG antibody (HRP)	ELISA, IHC, WB
ARG30119	Pro-B Cell Marker Antibody panel (CD19, CD34, CD38, CD40, CD45)(FACS)	ARG62856	CD45 antibody [MEM-28]	FACS, ICC/IF, IHC, IHC-P, IP, WB
		ARG62839	CD40 antibody [HI40a] (FITC)	FACS
		ARG52764	CD38 antibody [SP149]	FACS, IHC-P
		ARG62820	CD34 antibody [4H11(APG)]	Blocking, FACS, ICC/IF
		ARG52708	CD19 antibody [SP110]	IHC-P, FACS
		ARG65351	Goat anti-Rabbit IgG antibody (HRP)	ELISA, IHC, WB
		ARG65350	Goat anti-Mouse IgG antibody (HRP)	ELISA, IHC, WB
ARG30118	Tight Junction Marker Antibody Panel (Claudin1, E Cadherin, Occludin, ZO1)	ARG52599	Cadherin-E/E-Cadherin antibody [SPM471]	IHC-P
		ARG53386	Occludin antibody	IHC-P, WB
		ARG52871	Claudin-1 antibody [SP128]	IHC-P, FACS
		ARG65099	ZO-1 antibody, Internal	ELISA, WB

**Product List : Antibody Panel**

Cat. No.	Product Name	Cat. No. (Component)	Component Name	Application
ARG30169	Src Family Protein Tyrosine Kinases Antibody Panel	ARG63058	Lck antibody [LCK-01]	FACS, ICC/IF, IP, WB
		ARG63066	LYN antibody [LYN-01]	ICC/IF, IP, WB
		ARG54079	Fyn antibody [4B8-E7-A8]	WB, ICC/IF
		ARG62966	CSK antibody [CSK-04]	ICC/IF, IP, WB
		ARG62626	SRC1 antibody [SRC01 (GT12)]	ICC/IF, IHC-P, WB
		ARG65350	Goat anti-Mouse IgG antibody (HRP)	ELISA, IHC, WB
ARG30156	TGF- $\beta$ / SMAD Signaling Pathway Antibody Panel	ARG63160	SMAD4 / MADH4 antibody, C-terminal	ELISA, WB, IP
		ARG51797	SMAD3 (pSer 425) antibody	IHC-P, WB
		ARG51795	SMAD2 (pSer 467) antibody	WB
		ARG64410	ACVR1 antibody, Internal	ELISA, IHC-P, WB
		ARG65352	Donkey anti-Goat IgG antibody (HRP)	ELISA, IHC, WB
		ARG65351	Goat anti-Rabbit IgG antibody (HRP)	ELISA, IHC, WB

Mayflower Bioscience

**CANADA  
U.S.A**

Phone:  
+1 (314) 485 5210

E-mail:  
sales@  
mayflowerbio.com

Website:  
www.mayflowerbio.com

Shanghai Good-Science  
Biotech Company

**CHINA**

Phone:  
+86 400 9200 185,  
+86 (21) 31066606

E-mail:  
info@  
good-science.com.cn

Website:  
www.good-science.co  
m.cn/

EUROMEDEX

**FRANCE**

Phone:  
+33 (3) 88180720

E-mail:  
research@  
euromedex.com

Website:  
www.euromedex.com

Biomol GmbH

**GERMANY**

Phone:  
+49-40-85 32 600

E-mail:  
info@biomol.de

Website:  
www.biomol.de

A2S technologies Ltd

**ISRAEL**

Phone:  
+972 (77) 5567681

E-mail:  
A2S@A2S.co.il

Website:  
www.A2S.co.il

DBA Italia s.r.l.

**ITALY**

Phone:  
+39 0226922300

E-mail:  
info@dbaitalia.it

Website:  
www.dbaitalia.it

Funakoshi Co., Ltd.

**JAPAN**

Phone:  
+81 (3) 5684 1620

E-mail:  
reagent@  
funakoshi.co.jp

Website:  
www.funakoshi.co.jp

Bio-Connect BV

**NETHERLANDS  
LUXEMBOURG  
BELGIUM**

Phone:  
Netherlands:  
+31 (0)26 326 4450  
Belgium & Luxembourg:  
+32 (0)2 503 0348

E-mail:  
info@bio-connect.nl

Website:  
www.bio-connect.nl

Axon Scientific Sdn Bhd

**MALAYSIA**

Phone:  
+603 89451482

E-mail:  
info@  
axonscientific.com

Website:  
www.axonscientific.com

Celestial Sphere Trading  
Pte. Ltd

**SINGAPORE**

Phone:  
+65 8651 1768

E-mail:  
info@cspht.com

Website:  
www.cspht.com

LuBioScience GmbH

**SWITZERLAND**

Phone:  
+41 41 417 02 80

E-mail:  
info@lubio.ch

Website:  
www.lubio.ch

Cambridge Bioscience  
Limited

**UK**

Phone:  
+44 1223 316 855

E-mail:  
sales@  
bioscience.co.uk

Website:  
www.bioscience.co.uk



Phone : +886 (3) 5621738 / E-mail : [info@arigobio.com](mailto:info@arigobio.com)

---

[www.arigobio.com](http://www.arigobio.com)



**BIOMOL GmbH**  
Waidmannstr. 35  
22769 Hamburg  
Germany

[info@biomol.de](mailto:info@biomol.de)  
[www.biomol.de](http://www.biomol.de)

Fon: +49 (0)40-853 260 0  
Fax: +49 (0)40-853 260 22

