

RNAscope Validated Human Tissues

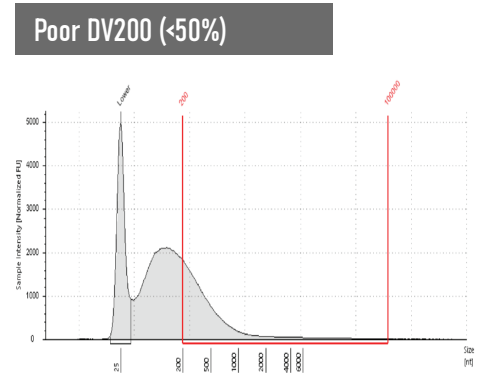
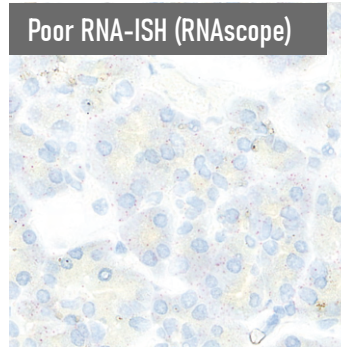
Why waste time and money using tissues with unknown RNA quality?

Most FFPE archival tissues have poor RNA

Most archival tissues are >5 years old
RNA deteriorates much faster than protein
RT storage accelerates RNA degradation

Misleading data from poor tissues

Loss of sensitivity in tissue genomics studies
Misleading results in protein-RNA correlation studies
Complete waste of resources and time



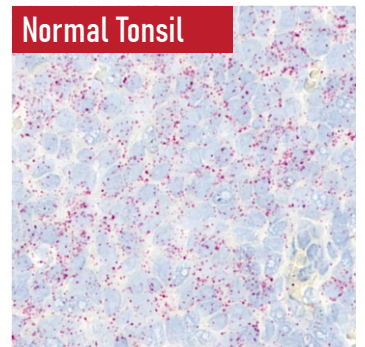
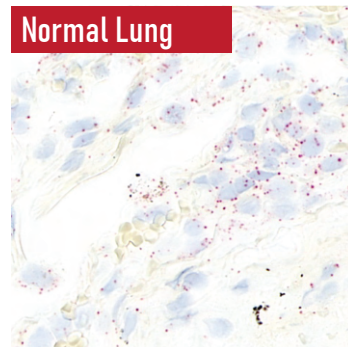
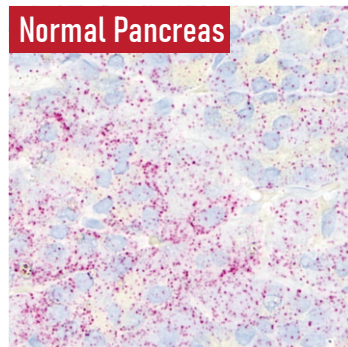
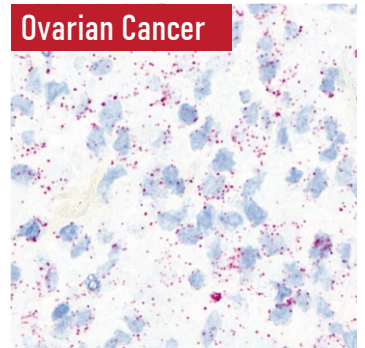
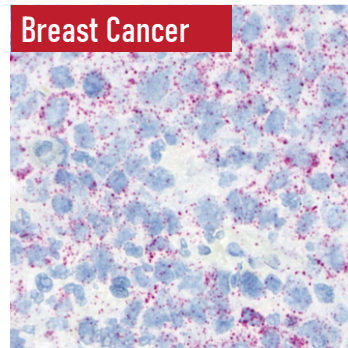
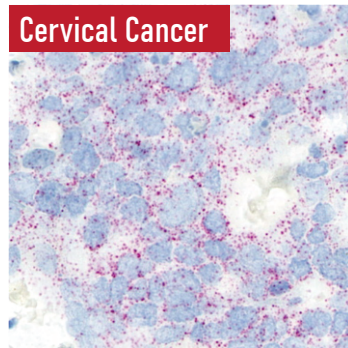
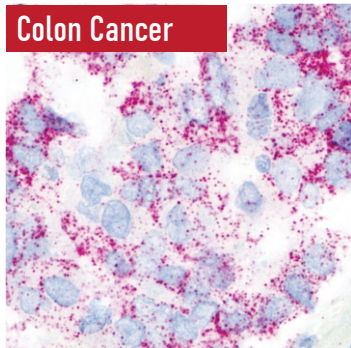
Acepix Advantage - Data Confidence in Tissue Genomics

Tissue Qualification by RNAscope

Single molecule sensitivity
Great indication of tissue RNA quality
Highly predictive of success rate in tissue genomics studies

Acepix Tissue Procurement Approach

Focus on tissues collected within 3 years
Only tissues with high RNAscope scores are selected
Low temperature storage to ensure long-term RNA stability



PPIB staining by RNAscope

Acepix RNAscope Validated Tissue Offering

Product Specification

Description	Specification	Tissue Arrays	Included Tissue Types
Tissue thickness (block)	≥1 mm	Cancer Tissue Array	Brain cancer, breast cancer, colon cancer, liver cancer, lung cancer, lymphoma, melanoma, prostate cancer, stomach cancer
Morphology QC	>85% area shown signature structure		
Tumor Block QC	>40% tumor area and <10% Necrotic area	Normal/Normal Adjacent Tissue (NAT) Array	Brain, breast, colon, kidney, liver, lung, pancreas, prostate, skin, stomach, tonsil
RNAscope QC	RNAscope PPIB score ≥ 2 on 80% tissue		
Storage	2-8°C with desiccants in sealed container		
Applications	RNA-ISH, RNA-seq, Spatial Transcriptomics, IHC		

Product Catalog

RNAscope Validated Human Cancer Tissues

Product Code	Product Description	Product Code	Product Description
R-7300-0610	Breast Cancer Tissue Block	R-7300-0620	Breast Cancer Tissue Slide (4µm, 3-pack)
R-7310-2210	Skin Cancer Tissue Block	R-7310-2220	Skin Cancer Tissue Slide (4µm, 3-pack)
R-7300-1510	Lung Cancer Tissue Block	R-7300-1520	Lung Cancer Tissue Slide (4µm, 3-pack)
R-7300-0810	Colorectal Cancer Tissue Block	R-7300-0820	Colorectal Cancer Tissue Slide (4µm, 3-pack)
R-7300-1110	Head and Neck Cancer Tissue Block	R-7300-1120	Head and Neck Cancer Tissue Slide (4µm, 3-pack)
R-7300-1410	Liver Cancer Tissue Block	R-7300-1420	Liver Cancer Tissue Slide (4µm, 3-pack)
R-7300-2110	Prostate Cancer Tissue Block	R-7300-2120	Prostate Cancer Tissue Slide (4µm, 3-pack)
R-7300-0510	Brain Cancer Tissue Block	R-7300-0520	Brain Cancer Tissue Slide (4µm, 3-pack)
R-7300-2410	Stomach Cancer Tissue Block	R-7300-2420	Stomach Cancer Tissue Slide (4µm, 3-pack)
R-7300-1610	Lymphoma Tissue Block	R-7300-1620	Lymphoma Tissue Slide (4µm, 3-pack)
R-7310-0710	Cervical Cancer Tissue Block	R-7310-0720	Cervical Cancer Tissue Slide (4µm, 3-pack)
R-7300-9010	Cancer Tissue Array Block	R-7300-9020	Cancer Tissue Array Slide (4µm, 3-pack)

RNAscope Validated Human Normal or Normal Adjacent Tissue (NAT)

Product Code	Product Description	Product Code	Product Description
R-7310-0510	NAT Breast Tissue Block	R-7310-0620	NAT Breast Tissue Slide (4µm, 3-pack)
R-7310-2210	NAT Skin Tissue Block	R-7310-2220	NAT Skin Tissue Slide (4µm, 3-pack)
R-7310-1510	NAT Lung Tissue Block	R-7310-1520	NAT Lung Tissue Slide (4µm, 3-pack)
R-7310-0810	NAT Colon Tissue Block	R-7310-0820	NAT Colon Tissue Slide (4µm, 3-pack)
R-7310-2910	Normal Tonsil Tissue Block	R-7310-2920	Normal Tonsil Tissue Slide (4µm, 3-pack)
R-7310-1410	NAT Liver Tissue Block	R-7310-1420	NAT Liver Tissue Slide (4µm, 3-pack)
R-7310-2110	NAT Prostate Tissue Block	R-7310-2120	NAT Prostate Tissue Slide (4µm, 3-pack)
R-7310-0510	NAT Brain Tissue Block	R-7310-0520	NAT Brain Tissue Slide (4µm, 3-pack)
R-7310-2410	NAT Stomach Tissue Block	R-7310-2420	NAT Stomach Tissue Slide (4µm, 3-pack)
R-7310-2010	NAT Pancreas Tissue Block	R-7310-2020	NAT Pancreas Tissue Slide (4µm, 3-pack)
R-7310-1210	NAT Kidney Tissue Block	R-7310-1220	NAT Kidney Tissue Slide (4µm, 3-pack)
R-7300-9010	Normal/NAT Tissue Array Block	R-7300-9020	Normal/NAT Tissue Array Slide (4µm, 3-pack)

Additional Services

FFPE tissue RNA extraction services
DV200 measure of FFPE RNA
On-demand RNAscope validation of FFPE tissue blocks
RNAscope assay services

Contact Us

Acepix Biosciences, Inc.
32990 Alvarado-Niles Rd Ste 910, Union City, CA 94587
www.acepixonbio.com
service@acepixonbio.com

Ethical Information

All samples are collected under IRB-approved protocols.
All donors have voluntarily signed legal Informed Consent documents, which clearly state the intent of use for their donated specimens: For medical research purposes with possible benefits to scientific discovery and humanity as a whole.
All donors are anonymized and all identifying information is redacted from all pathology reports and summarizing clinical spreadsheets.