

LAB ESSENTIALS: CONTROL BLOCKS & SLIDES

HIGH-QUALITY BIOMARKER CONTROLS FOR IHC BIOMARKER PROFILING & DISCOVERY, ASSAY DEVELOPMENT, AND STAIN VALIDATION TRUSTED BY SCIENTISTS WORLDWIDE

WHY CHOOSE ACEPIX TO SHORTEN YOUR DISCOVERY PROCESS?

Highly consistent and reliable native and edited control material

- A-FLX™ FFPE cell pellets with less than 5% coefficient of variation (CV)

Largest worldwide FFPE cell line bank

- 300+ in-house cell lines and more than 50 validated IHC antibodies

Complete mouse and rat tissue bank

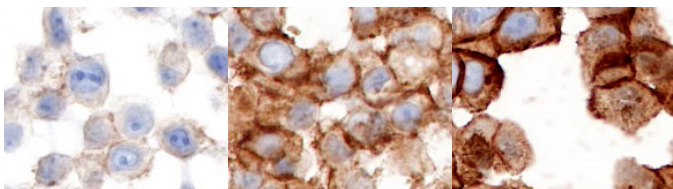
- Ideal for validating specialty stain

Wide variety of human and small animal tissue types

- > 50 normal and cancer tissue types
- Full commercial research consent
- The freshest tissue inventory (less than 2 years old), ensuring intact biomarker expression

TOP-SELLING CELL PELLET & TISSUE ARRAYS

HER2 Breast Cancer Cell Pellet Array

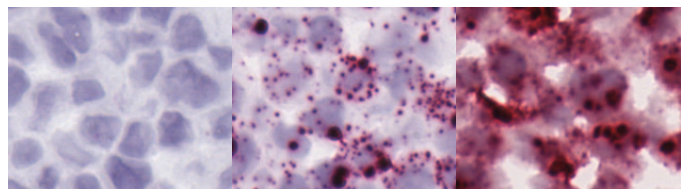


CODE

3700-0210 (2 mm core block; 300+ sections at 4 µm)
3700-0220 (5 slide pack; 4 µm thickness)

- 5 cores – whole spectrum of HER2 expression from 0 to 3+
- Array includes cell lines HER2-0+, HER2-0.5+, HER2-1+, HER2-2+, HER2-3+
- Used as an on-slide control
- Excellent run control for PR and ER expression

HPV Cell Pellet Array

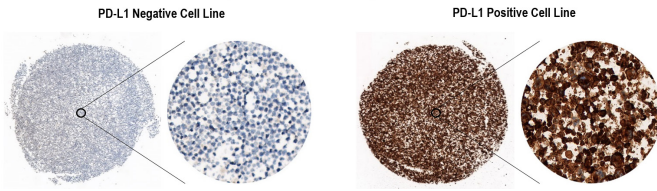


CODE

3700-0410 (2 mm core block; 300+ sections at 4 µm)
3700-0420 (5 slide pack; 4 µm thickness)

- 4 cores - HPV16/18 Negative, HPV16+ Low, HPV16+ High, HPV18+ expression
- Array includes cell lines HPV-, HPV-16, HPV-18
- Used as an on-slide control

PD-L1 Cell Pellet Array



CODE

3700-0310 (2 mm core block; 300+ sections at 4 μ m)
 3700-0320 (5 slide pack; 4 μ m thickness)

- 2 cores – PD-L1+ and PD-L1+ expression
- Array includes cell lines PD-L1-, PD-L1+
- Used as an on-slide control

Rat Wistar Multi-Tissue FFPE Arrays

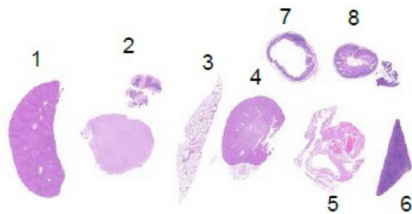


CODE

7020-0810 (200 sections at 4 μ m)
 7020-8020 (5, 25, 100 slide pack; 4 μ m thickness)

- Tissue Arrangement: 1) Liver; 2) Brain; 3) Lung; 4) Kidney; 5) Heart; 6) Spleen; 7) Intestine; 8) Colon

BALB/C Mouse Multi-Tissue FFPE Arrays

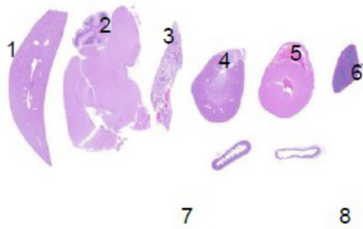


CODE

7010-8010 (200 sections at 4 μ m)
 7010-8020 (5, 25, 100 slide pack; 4 μ m thickness)

- Tissue Arrangement: 1) Liver; 2) Brain; 3) Lung; 4) Kidney; 5) Heart; 6) Spleen; 7) Intestine; 8) Colon

C57BL/6 Mouse Multi-Tissue FFPE Arrays



CODE

7011-8010 (200 sections at 4 μ m)
 7011-8020 (5, 25, 100 slide pack; 4 μ m thickness)

- Tissue Arrangement: 1) Liver; 2) Brain; 3) Lung; 4) Kidney; 5) Heart; 6) Spleen; 7) Colon; 8) Intestine

CONFIDENCE

FASTER

A

#1

EXPERT

consistent
 consistent
 consistent



32990 ALVARADO-NILES ROAD
 SUITE 910
 UNION CITY, CA • 94587 • USA

(888) 866-0580
 ACEPIXBIO.COM