

# SPATIAL PATHOLOGY



IHC-Validated Antibody Series

## Significance

Immunohistochemistry (IHC) uses specific antigen-antibody interactions visualized by chemical stains to locate and quantify proteins and peptides within cells and tissues. This method is essential in several key areas:

### Disease Diagnosis:

Identify and differentiate cancer types and other pathologies

### Therapeutic Guidance:

Inform the selection of targeted therapies

### Spatial Proteomics:

Map protein distribution and interactions within tissues

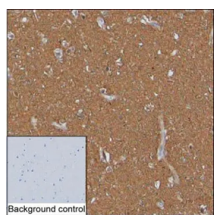
Research indicates that biomarkers like Ki67, p53, CK20, CK7, and PD-L1 are crucial for early cancer screening and integral to early detection strategies.

## Features

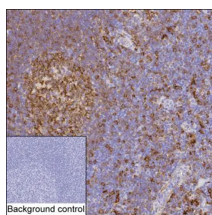
High specificity for tissue and subcellular localization

Comprehensive portfolio with antibodies validated for IHC, spanning over 2,400 targets

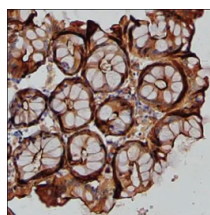
Superior performance ratings from customers



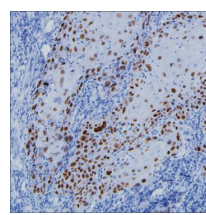
Cat # Target Tissue  
KC-473 UCHL1 Brain tissue



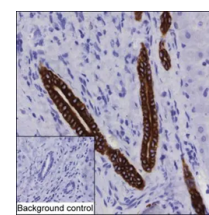
Cat # Target Tissue  
KC-1890 HLA-DRA Tonsil tissue



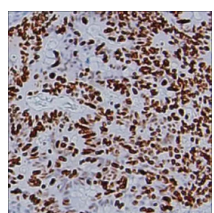
Cat # Target Tissue  
KC-175 CEACAM5 Colon tissue



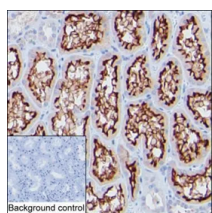
Cat # Target Tissue  
KC-1566 TP63 Urethral tumor



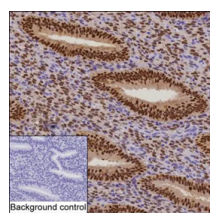
Cat # Target Tissue  
KC-1511 KRT19 Liver tissue



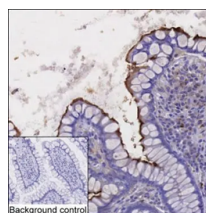
Cat # Target Tissue  
KC-494 MKI67 Colon cancer tissue



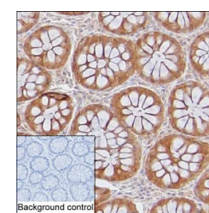
Cat # Target Tissue  
KC-571 MME Kidney tissue



Cat # Target Tissue  
KC-1154 PGR Endometrium tissue



Cat # Target Tissue  
KC-988 ANPEP Intestine tissue



Cat # Target Tissue  
KC-621 LGALS3 Colon cancer tissue

## Spatial pathology product list

Cat. No.	Products	Clone No.	Host	Tissue
RC-16997	ABCB1	K01_4U26	Rabbit	Human liver
KC-2367	ABCC3	K24029_16C3	Mouse	Gall bladder
RC-4661	ACTA1	K01_1U26	Rabbit	Human colon cancer
RC-6367	ACTA2	K01_2U06	Rabbit	Human colon cancer
KC-1779	AFP	K06092_4C11	Mouse	Liver cancer
RC-4204	ANXA1	K01_1M77	Rabbit	Esophagus
RC-15423	APC	K01_3S34	Rabbit	Human colon cancer
KC-2488	AR	KAA279_2F5	Mouse	Testis
KC-1813	ARG1	K16277_18E2	Mouse	Liver
KC-2473	ATRX	KAA290_5A10	Mouse	Tonsil
KC-481	BCL2	KAA270_3G8	Mouse	Tonsil
KC-1099	BCL6	K1E024_3B12	Mouse	Tonsil
KC-6246	BIRC5	K01_2S79	Mouse	Testis
RC-16812	BRAF	K01_4S39	Rabbit	Human ovarian cancer
RC-6547	BRCA1	K01_2W89	Rabbit	Breast
KC-266	C4A	K11087_24H12	Mouse	Tonsil
RC-15412	CA9	K01_3S23	Rabbit	Human kindey cancer
KC-510	CALB2	KAA343_9H2	Mouse	Brain
KC-40719	CALD1	K92102_5A1	Mouse	Endometrium smooth muscle
RC-17006	CCND1	K01_4U35	Rabbit	Human bladder
RC-15277	CD14	K01_3Q86	Rabbit	Human breast
RC-16799	CD163	K01_4S26	Rabbit	Mouse liver
KC-4434	CD1A	K01_1J14	Mouse	Human tonsil
KC-4439	CD2	K01_1J15	Mouse	Human colon
RC-15668	CD207	K01_3U81	Rabbit	Human skin
KC-2451	CD22	K1E036_17H2	Mouse	Tonsil
RC-16783	CD34	K01_4S10	Rabbit	Human kidney
KC-2838	CD34	K29060_2F4	Mouse	Placenta
KC-944	CD38	K94011_11B7	Mouse	Tonsil
RC-15502	CD3D	K01_3T14	Rabbit	Human spleen
RC-3957	CD4	K01_3M18	Rabbit	Liver cancer
KC-6144	CD44	K01_2R75	Mouse	Tonsil
KC-3358	CD5	KAA334_2D1	Mouse	Tonsil
RC-4546	CD63	K01_1P28	Rabbit	Human breast cancer
RC-7088	CD68	K01_3M51	Rabbit	Tonsil
RC-4689	CD7	K01_1P29	Rabbit	Human tonsil
KC-1112	CD74	K52031_20G12	Mouse	Humantonsil
RC-4966	CD79A	K01_1P30	Rabbit	Tonsil

Cat. No.	Products	Clone No.	Host	Tissue
RC-3902	CD8A	K01_3M14	Rabbit	Liver cancer
RC-4621	CD99	K01_1P31	Rabbit	Human breast cancer
RC-3960	CDH1	K01_3M25	Rabbit	Liver
RC-3846	CDH16	K03_1J79	Rabbit	Kidney
RC-5282	CDK4	K01_1P39	Rabbit	Lung cancer
KC-158	CDKN1A	KAA345_13D12	Mouse	Esophagus squamous cell carcinoma
RC-4711	CDKN1B	K01_1W18	Rabbit	Breast cancer
RC-5851	CDKN1C	K01_2N79	Rabbit	Placenta
KC-148	CDX2	K1E003_18C6	Mouse	Colon cancer
RC-3740	CGA	K03_1K09	Rabbit	Placenta
RC-14343	CHGA	K03_1K75	Rabbit	Pancreas
RC-16829	CNN1	K01_4S56	Rabbit	Human breast
KC-4134	COL4A1	K01_1J62	Mouse	Human liver carcinoma
RC-5665	CPS1	K01_2L91	Rabbit	Human colon cancer
KC-2416	CR2	KAA120_2A8	Mouse	Tonsil
RC-6352	CTNNB1	K01_2T90	Rabbit	Colon
RC-5562	CTNND1	K01_2K84	Rabbit	Colon
RC-5023	DNTT	K01_2J18	Rabbit	Thymus
RC-7039	EGFR	K01_3L96	Rabbit	Placenta
RC-5646	ENG	K01_2L72	Rabbit	Human lung cancer
KC-3429	ENG	K94062_1E8	Mouse	Placenta
KC-237	ENO2	K94003_2F2	Mouse	Brain
RC-5049	EPCAM	K01_1Q85	Rabbit	Human colon cancer
KC-624	ERCC1	KAA342_8B1	Mouse	Testis
RC-16760	ERG	K01_4R86	Rabbit	Human kidney
KC-3192	EZH2	K94046_6B9	Mouse	Testis
RC-4485	F13A1	K01_1K61	Rabbit	Placenta
KC-659	F8	K07001_3G9	Mouse	Stomach cancer
KC-2534	FCER2	K92013_3B12	Mouse	Tonsil
KC-4097	FCGR3A	K01_1J88	Mouse	Human liver
KC-634	FCGR3B	K52021_12F2	Mouse	Spleen
RC-5099	FLI1	K01_1R22	Rabbit	Human lung cancer
RC-15367	FOLH1	K01_3R77	Rabbit	Human prostate carcinoma
KC-3130	GATA3	K40064_3A4	Mouse	Breast cancer
KC-960	GFAP	K70012_13H11	Mouse	Cerebellum
KC-957	GFAP	K70012_4F3	Mouse	Mouse brain
RC-15555	GH1	K01_3T67	Rabbit	Human placenta
RC-15311	GLUL	K01_3R21	Rabbit	Human liver
KC-742	GZMB	KAA346_3F3	Mouse	Spleen

Cat. No.	Products	Clone No.	Host	Tissue
RC-4836	H3-3A, H3-3B	K01_1S25	Rabbit	Human lung cancer
KC-4506	H3C2, H3C12, H3C11, H3C4, H3C1, H3C7, H3C8, H3C6, H3C3, H3C10	K01_1K01	Mouse	Colon
KC-1607	HLA-DRA	KAA312_15E9	Mouse	Tonsil
KC-1254	HSPA1A	K40046_8C11	Mouse	Testis
KC-3956	IDH1	K1L005_10F10	Mouse	Prostate
KC-1257	IGF2BP3	K24018_18A5	Mouse	Placenta
KC-080	IGHA2	KT153	Mouse	Human tonsil
KC-088	IGHG4	K06216_14H8	Mouse	Human tonsil
KC-076	IGHM	KT194	Mouse	Human tonsil
RC-3966	INS	K03_1J96	Rabbit	Pancreas
KC-2700	INSM1	KAA364_15E2	Mouse	Pancreas
KC-584	ITGB3	KAA261_13B10	Mouse	Kidney
KC-355	KLK3	KT166	Mouse	Prostate
RC-15270	KRT1	K01_3Q79	Rabbit	Rat skin
KC-477	KRT10	K06242_2A7	Mouse	Skin
KC-160	KRT10	K16228_7A8	Mouse	Esophageal squamous cell carcinoma
KC-270	KRT14	K16228_8G11	Mouse	Esophageal squamous cell carcinoma
KC-970	KRT17	K49028_6G5	Mouse	Skin
KC-271	KRT17	K06270_10C9	Mouse	Esophagus squamous cell carcinoma
KC-157	KRT18	K06265_3D4	Mouse	Appendix
KC-1511	KRT19	K16229_6B12	Mouse	Liver
RC-5215	KRT19	K01_1Q19	Rabbit	Human colon cancer
KC-1666	KRT20	K49028_6C7	Mouse	Colon
KC-2839	KRT5	KAA313_13E5	Mouse	Skin
KC-1149	KRT7	K56004_16C7	Mouse	Salivary gland
KC-1063	KRT8	K49028_12E9	Mouse	Small intestine
KC-4038	KRT8	K01_1J83	Mouse	Human colon
KC-621	LGALS3	KAA344_15D12	Mouse	Colon cancer
KC-2550	LHB	K06361_17E1	Mouse	Pituitary tumor
RC-3751	LYZ	K03_1J92	Rabbit	Small intestine
RC-16808	MB	K01_4S35	Rabbit	Human skeletal muscle
KC-1196	MBP	K49027_15B1	Mouse	Brain
KC-6328	MCM2	K01_2T63	Mouse	Human tonsil
KC-1055	MDM2	K56006_10C9	Mouse	Testis

Cat. No.	Products	Clone No.	Host	Tissue
RC-4411	MDM2	K01_1L80	Rabbit	Human colon cancer
RC-5233	MET	K01_1T82	Rabbit	Human lung cancer
RC-4041	MGMT	K01_1K28	Rabbit	Liver
KC-494	MKI67	K16222_3D5	Mouse	Colon cancer
KC-2359	MKI67	K16222_5F11	Mouse	Tonsil
KC-619	MLANA	KAA343_6C6	Mouse	Melanoma
KC-3412	MLH1	KAA310_11F1	Mouse	Ovarian cancer
KC-571	MME	KAA335_5H6	Mouse	Kidney
RC-4902	MPO	K01_1U34	Rabbit	Human colon cancer
OC-334	MPO		Mouse	Bone marrow
KC-1886	MS4A1	KAA308_13H10	Mouse	Spleen
KC-1722	MSH2	K52012_2D6	Mouse	Tonsil
RC-4261	MSH6	K01_1L11	Rabbit	Human tonsil
RC-5097	MT-CO2	K01_1U15	Rabbit	Human tonsil
RC-15444	MUC1	K01_3S55	Rabbit	Human ovarian cancer
RC-15125	MUC16	K01_3P33	Rabbit	Human ovary cancer
KC-2511	MUC2	KAA279_5H8	Mouse	Colon
KC-24973	MUC5AC	KAA308_15A1	Mouse	Stomach
RC-15293	MYC	K01_3R03	Rabbit	Human lung carcinoma
KC-135	MYOD1	K49011_10E12	Mouse	Rhabdosarcoma
KC-2513	NAPSA	KAA342_15E6	Mouse	Lung
KC-2506	NCAM1	KAA341_4D1	Mouse	Brain
KC-487	NEFL	K49012_1E6	Mouse	Brain
RC-3087	NES	K01_2Y62	Rabbit	Kidney
RC-16761	NGFR	K01_4R87	Rabbit	Human glioma
RC-16816	NTRK1	K01_4S43	Rabbit	Human liver
RC-15326	OLIG2	K01_3R36	Rabbit	Human mouse brain
RC-15318	PAX2	K01_3R28	Rabbit	Human colon
RC-15239	PAX5	K01_3Q48	Rabbit	Human tonsil
KC-801	PCNA	K29023_3A4	Mouse	Tonsil
KC-766	PDCD1	K06146_12E10	Mouse	Tonsil
RC-5216	PECAM1	K01_1P19	Rabbit	Kidney
RC-3733	PIP	K03_1K13	Rabbit	Salivary gland
KC-2421	PMS2	KAA130_8F3	Mouse	Testis
KC-376	PTEN	KAA365_16H5	Mouse	Prostate cancer
KC-3225	PTH	K1E035_13C4	Mouse	Parathyroid gland tumor
RC-3743	PTPRC	K01_3M11	Rabbit	Colon
KC-3092	PTPRC	K01_2T74	Mouse	Breast cancer
RC-5589	RB1	K01_2L12	Rabbit	Human tonsil
KC-981	RBFOX3	K06325_3H12	Mouse	Cerebellum

Cat. No.	Products	Clone No.	Host	Tissue
RC-15580	S100A1	K01_3T92	Rabbit	Human kidney
OC-752	S100A9		Mouse	Tonsil
KC-1539	S100P	K40048_16G3	Mouse	Placenta
KC-2245	SALL4	K16272_19C8	Mouse	Testis
RC-16977	SATB2	K01_4U06	Rabbit	Human stomach cancer
KC-3212	SCGB2A2	KAA224_15A4	Mouse	Breast
KC-2429	SDC1	KAA133_7E9	Mouse	Kidney
KC-1601	SERPINA3	K06117_5E6	Mouse	Endometrial cancer
RC-16755	SLC2A1	K01_4R81	Rabbit	Human cervix cancer
RC-4903	SMARCB1	K01_1Y60	Rabbit	Human tonsil
RC-3096	SOX10	K01_1L40	Rabbit	Salivary gland
KC-3062	SOX2	K02_1J14	Mouse	Lung adenocarcinoma
KC-3247	SPN	K94056_3B11	Mouse	Tonsil
KC-3065	SST	K02_1J09	Mouse	Lung adenocarcinoma
RC-3077	SSTR2	K01_3J19	Rabbit	Pancreas
RC-16397	STMN1	K01_4N19	Rabbit	Human colon
OC-003	SYP		Mouse	Brain
KC-3333	TACSTD2	K40083_10B3	Mouse	Esophagus
RC-15727	TBX21	K01_3W41	Rabbit	Human spleen
KC-1129	TCL1A	K40047_6C1	Mouse	Tonsil
RC-15730	TFE3	K01_3W44	Rabbit	Human bladder
RC-3962	TFF1	K03_1K15	Rabbit	Stomach
RC-16810	TFRC	K01_4S37	Rabbit	Human placenta
KC-741	TG	KAA130_6F5	Mouse	Thyroid
KC-2408	THPO	K40060_1B6	Mouse	Liver
KC-1137	TNFRSF8	K16263_10D8	Mouse	Fallopian tube
KC-591	TOP2A	KAA299_15H7	Mouse	Testis
RC-6000	TP53	K01_2Q30	Rabbit	Mouse skin
KC-4094	TP53	K01_1J57	Mouse	Human breast carcinoma
KC-203	TP63	K16222_6F1	Mouse	Prostate
KC-2165	TUBB3	KAA242_5G1	Mouse	Cerebellum
RN-088	TYMS	K92084_12C4	Mouse	Tonsil
KC-093	UCHL1	K49007_1G1	Mouse	Brain
RC-15800	UPK3A	K01_3X15	Rabbit	Human bladder
RC-16835	VEGFA	K01_4S62	Rabbit	Human kidney
RC-5477	VEGFD	K01_2J97	Rabbit	Mouse heart muscle
KC-245	VIL1	K06283_9D3	Mouse	Kidney
KC-246	VIL1	K06283_16A4	Mouse	Colon carcinoma
RC-3066	VIM	K01_2T89	Rabbit	Tonsil
KC-2440	WT1	KAA392_11A8	Mouse	Testis