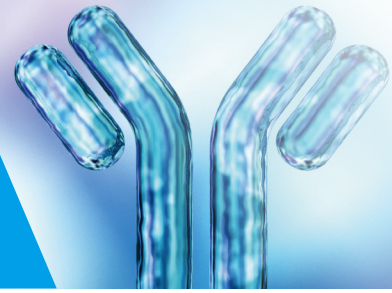


IMMUNOGLOBULINS



Recombinant Human Immunoglobulins and Ig-targeting mAbs (magnetic beads)



Significance

Antibody typing is essential for identifying antibody isotypes, subtypes, and light chain types, each with distinct functions and different associations with pathological and physiological states. Specifically identifying antibody subtypes is fundamental to various research areas and has critical applications in:

IgG4
Related Diseases

Autoimmune
Disorders

IgG subclass
Deficient Diseases

Hypersensitivity
Reactions

Infectious
Diseases

Strengths

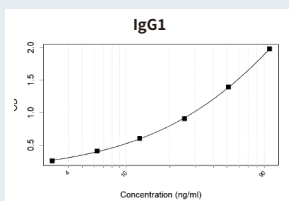
Absea® provides a comprehensive range of high-quality mAbs (magnetic beads) for immunoglobulin isotyping and subtyping. Our portfolio includes: IgG1, IgG2, IgG3, IgG4, IgA, IgE, IgM, Kappa and Lambda light chains.

Features

Extensive Coverage of mAbs for Multi-Species Immunoglobulin Isotyping & Subtyping

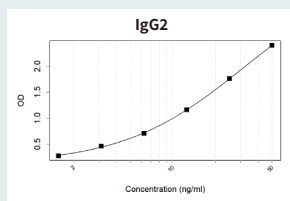
High Specificity mAbs Against Various Subtypes with No Cross-Reactivity

Isotype-specific IP magnetic beads for IgA, IgM, IgG1-4, and IgE



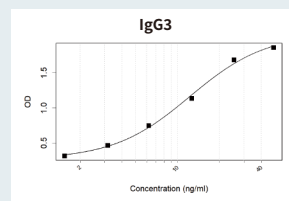
Sandwich ELISA

KC-1245 - KC-424



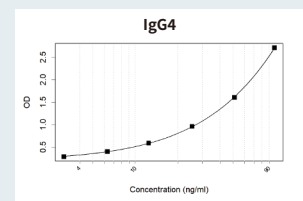
Sandwich ELISA

KC-427 - KC-424



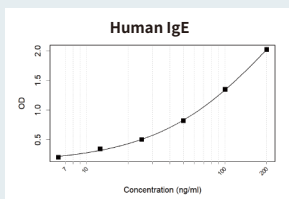
Sandwich ELISA

KC-418 - KC-424



Sandwich ELISA

KC-419 - KC-083



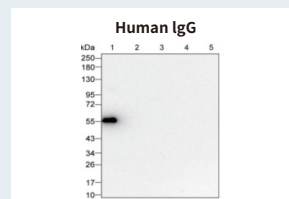
Sandwich ELISA

KC-2848 - KC-081



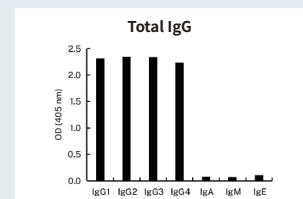
Cat # Tissue

KC-086 Human tonsil tissue



Western blotting

KC-424



Cross reactivity

KC-424

Product list - Monoclonal Antibodies

Catalog No.	Products	Clone No.	WB	IHC	IP	ELISA
KC-072	Human IgA	KT41	√	√		√
KC-080	Human IgA	KT153	√	√		
KC-407	Human IgA	KT13	√			
KC-079	Human IgA	KT40				√
KH-079	Human IgA	KT40				√
RC-16441	Human IgD	K01_4N63	√			
KC-081	Human IgE	4C3	√			√
KC-437	Human IgE	K06263_3B5	√			
KC-436	Human IgE	K06263_1B4	√			
KC-438	Human IgE	K06263_7H8	√			
KH-082	Human IgE	1A2				√
KC-084	Human IgG	KT48	√	√		√
KC-424	Human IgG	KT47	√	√		√
KC-420	Human IgG	KT131	√	√		
KC-671	Human IgG	K03018_3F3	√	√		
KC-083	Human IgG	KT132	√			√
KC-8516	Human IgG	KT15		√		
KH-424	Human IgG	KT47				√
KH-083	Human IgG	KT132				√
KC-6019	Human IgG	K01_2Q49				
KC-1616	Human IgG1	K16105_1D5	√			√
RC-16484	Human IgG1	K01_4P07	√			
KC-1245	Human IgG1	KT46				√
KH-1616	Human IgG1	K16105_1D5				√
KC-427	Human IgG2	K06302_19F4		√		√
KC-421	Human IgG2	KT138		√		√
KC-429	Human IgG2	K06306_22C5		√		√
KC-8605	Human IgG2	K06088_9A9		√		
OC-129	Human IgG2	N/A		√		
RC-15097	Human IgG2	K01_3P05	√			
KH-429	Human IgG2	K06306_22C5				√
KH-427	Human IgG2	K06302_19F4				√
KC-418	Human IgG3	KT133	√	√		√
KC-086	Human IgG3	K16244_8D9	√	√		√
KC-425	Human IgG3	K16244_1A5	√	√		√
KC-2883	Human IgG3	K06089_8E4				√
KH-2883	Human IgG3	K06089_8E4				√
KC-087	Human IgG3	K06089_13E12				√

Catalog No.	Products	Clone No.	WB	IHC	IP	ELISA
KC-419	Human IgG4	KT130	√	√		√
KC-088	Human IgG4	K06216_14H8	√	√		
RC-5986	Human IgG4	K01_2Q16	√	√		
KC-662	Human IgG4	KT209	√			√
KC-2881	Human IgG4	K06216_5G4	√			
KC-076	Human IgM	KT194	√	√		
KC-075	Human IgM	KT16	√			√
KC-6049	Human IgM	K01_2Q79		√		
KC-2885	Human IgM	KT38				√
KH-2885	Human IgM	KT38				√
KC-1650	Human Lambda	K40033_4A4	√			
KC-1651	Human Lambda	K40033_10A2	√			
KC-1783	Human Lambda	K40033_4F3	√			
KC-1512	Human Lambda	K40033_7C12		√		
KC-431	Human Lambda	K06221_5H1		√		
KC-7996	Human Lambda	K40033_1H8				√
KC-7998	Human Lambda	K40033_7G7				√
KC-7997	Human Lambda	K40033_13B12				√
KB-7998	Human Lambda	K40033_7G7				√
KB-7996	Human Lambda	K40033_1H8				√
KB-7997	Human Lambda	K40033_13B12				√

Flagship Products - Antibody Pairs

Catalog No.	Products	Captrue Antibody	Detection Antibody	Protein Standard
ES-105	Human IgA	KC-072	KC-079	KC-006
ES-087	Human IgE	KC-2848	KC-081	KC-005
ES-088	Human IgE	KC-081	KC-2848	KC-005
ES-090	Human IgE	KC-436	KC-2848	KC-005
ES-312	Human IgG1	KC-1245	KC-424	
ES-092	Human IgG1	KC-1245	KC-083	KC-001
ES-094	Human IgG2	KC-427	KC-424	KC-002
ES-096	Human IgG2	KC-421	KC-429	KC-002
ES-098	Human IgG3	KC-425	KC-2883	KC-003
ES-313	Human IgG3	KC-418	KC-424	
ES-101	Human IgG3	KC-418	KC-083	KC-003
ES-314	Human IgG4	KC-419	KC-424	
ES-102	Human IgG4	KC-419	KC-083	KC-004
ES-315	Human IgG4	KC-419	KC-083	
ES-106	Human IgM	KC-075	KC-2885	KC-007

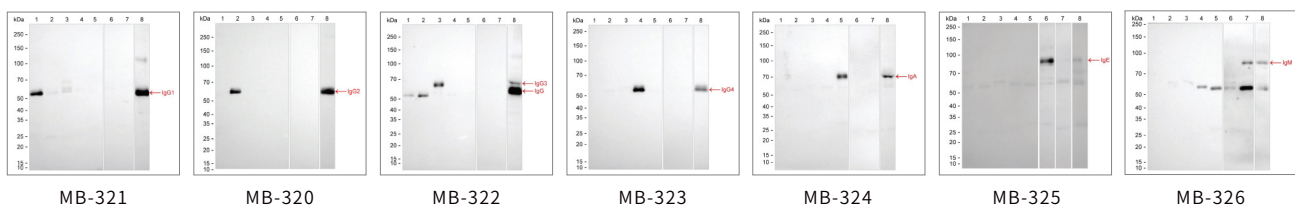
Catalog No.	Products	Captrue Antibody	Detection Antibody	Protein Standard
ES-1099	Human IGLC2	KC-7996	KC-7997	PP-3217
ES-1100	Human IGLC2	KC-7997	KC-7996	PP-3217
ES-1101	Human IGLC2	KC-7996	KC-7998	PP-3217

Flagship Products - Recombinant Human Proteins

Catalog No.	Products	Protein Expression Range	Expression Systems	Tag
KC-006	Human IgA2	-	-	Tag Free
KC-005	Human IgE	-	-	Tag Free
KC-001	Human IgG1	-	-	Tag Free
KC-002	Human IgG2	-	-	Tag Free
KC-003	Human IgG3	-	-	Tag Free
KC-004	Human IgG4	-	-	Tag Free
KC-007	Human IgM	-	-	Tag Free

Flagship Products - Conjugates

Catalog No.	Products	IP
MB-324	Human IgA	✓
MB-325	Human IgE	✓
MB-321	Human IgG1	✓
MB-320	Human IgG2	✓
MB-322	Human IgG3	✓
MB-323	Human IgG4	✓
MB-326	Human IgM	✓



Application: IP

Lane 1: Human IgG1 magnetic beads
Lane 2: Human IgG2 magnetic beads
Lane 3: Human IgG3 magnetic beads
Lane 4: Human IgG4 magnetic beads

Lane 5: Human IgA magnetic beads
Lane 6: Human IgE magnetic beads
Lane 7: Human IgM magnetic beads
Lane 8: Input