

Toll-like Receptors and Innate Immunity

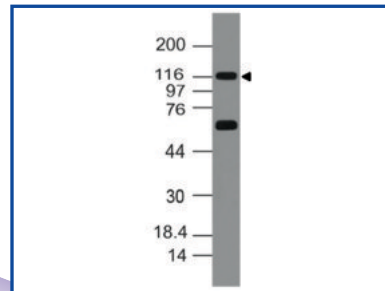
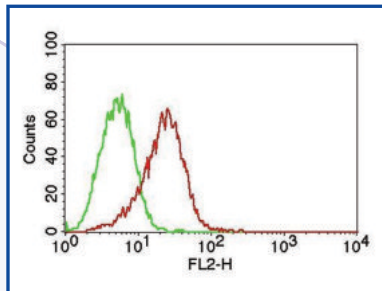
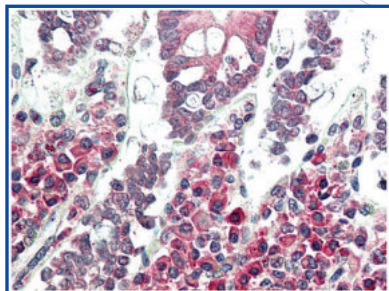
Monoclonal Antibody to TLR2

Product Code : 10-3026

Clone Name : ABM3A87

Application : IHC, FACS, WB

Reactivity : Mouse, Human



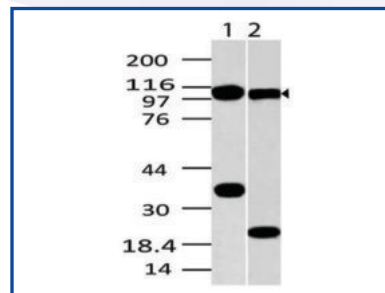
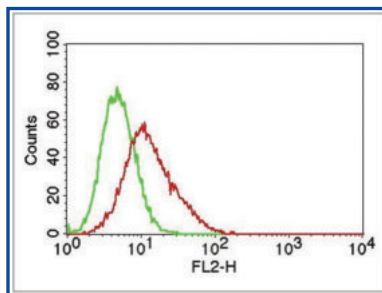
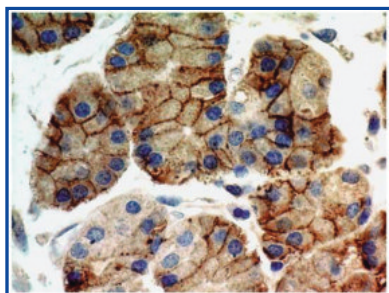
Monoclonal Antibody to TLR9

Product Code : 10-3003

Clone Name : ABM1C51

Application : IHC, FACS, WB

Reactivity : Mouse, Human



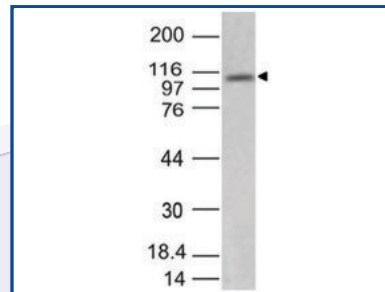
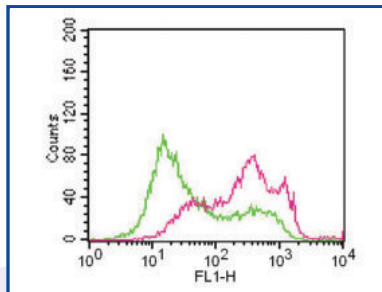
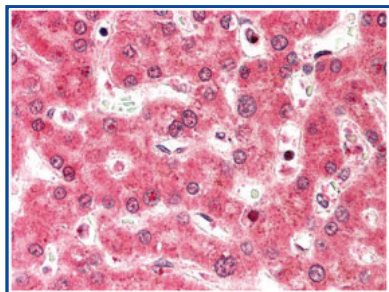
Monoclonal Antibody to mTLR3

Product Code : 10-3017

Clone Name : ABM24E5

Application : IHC, FACS, WB

Reactivity : Mouse, Human



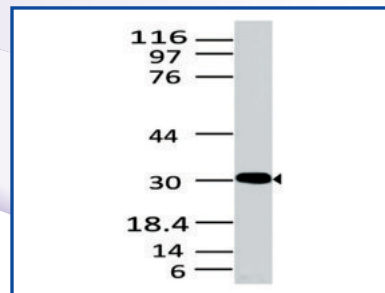
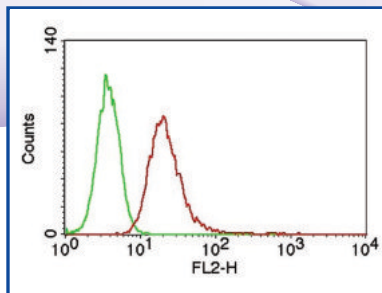
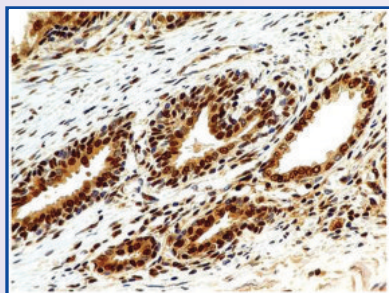
Monoclonal Antibody to HMGB1

Product Code : 10-4024

Clone Name : ABM24D3

Application : IHC, FACS, WB

Reactivity : Human



Antibodies

Cat. No.	Antigen	Clone	Isotype	Clonality	Application	Reactivity
10-3555	CD14	18D11	Mouse IgG1	Monoclonal	FACS, FA	H
10-3548	CD163	RM3/1	Mouse IgG1	Monoclonal	FACS, IHC-Fr, FA, IF, IP, WB	H
10-3502	CD180	RP/14	Rat IgG2a, k	Monoclonal	FACS, FA	M
10-3526	CD34	MEC14.7	Rat IgG2a	Monoclonal	FACS, IHC	M
10-3543	CD35	31R	Mouse IgG1	Monoclonal	FACS, IHC-Fr,IP, IHC, WB	H
10-3544	CD36	FA6-152	Mouse IgG1	Monoclonal	FACS, IHC-Fr, FA,IF, IP	H
10-3540	CD46	M177	Mouse IgG1	Monoclonal	FACS, IHC-Fr, FA,IP, WB	H
10-3542	CD55	D17	Mouse IgG1	Monoclonal	FACS, IHC-Fr, FA	H
10-3531	CD71	ER-MP21	Rat IgG2a	Monoclonal	FACS, IHC-Fr, FA	M
10-3554	CD73	4G4	Mouse IgG1	Monoclonal	FACS, IHC-Fr, FA, IF, IP, WB	H
10-3553	CD96	NK92.39	Mouse IgG1	Monoclonal	FACS, FA	H
10-10020	Dc-Sign	ABM47B7	Mouse IgG2b, k	Monoclonal	WB,FACS	H
10-4013	Dectin-2	ABM2H28	Mouse IgG2, k	Monoclonal	IHC,WB,FACS	M, H
10-6008	DFF-40	ABM1H15	Mouse IgG1	Monoclonal	WB,FACS	H, M
10-3028	EPS8	ABM4H15	Mouse IgG1, k	Monoclonal	WB	H
10-3556	E-selectin	ENA1	Mouse IgG1	Monoclonal	IHC-Fr, FA,IP	H
10-3550	Galectin-3	B2C10	Mouse IgG1	Monoclonal	FACS, IHC-Fr, FA,IHC, WB	H
10-4023	HMGB1	ABM24C2	Mouse IgG2b, k	Monoclonal	WB,FACS	H
10-4024	HMGB1	ABM24D3	Mouse IgG1, k	Monoclonal	IHC,WB,FACS	H
10-4025	HMGB1	ABM2E44	Mouse IgG2b, k	Monoclonal	WB	H
10-3541	ICAM-1	HM.2	Mouse IgG1	Monoclonal	FACS, IHC-Fr,IF, IP, IHC	H
10-3557	ICAM-1	HM.1	Mouse IgG1	Monoclonal	IF	H
10-3523	IFN-alpha	F18	Rat IgG1	Monoclonal	FACS, FA, WB	M
10-6003	IκB alpha	ABM10F4	Mouse IgG1, k	Monoclonal	WB,FACS	H
10-6007	IKK alpha	ABM10G9	Mouse IgG1, k	Monoclonal	WB,FACS	H, M
10-6005	IKK beta	ABM10E6	Mouse IgG1, k	Monoclonal	WB	H
10-6015	Iκk epsilon	ABM13C7	Mouse IgG2a, k	Monoclonal	IHC,WB	H, M
10-6017	Iκk gamma	ABM15D9	Mouse IgG1, k	Monoclonal	WB	H
10-3536	IL-6	5E1	Mouse IgG1	Monoclonal	FA,IP, WB	H
10-6019	kB-Ras1	ABM17B5	Mouse IgG1, k	Monoclonal	WB	H
10-3545	LOX-1	23C11	Mouse IgG2	Monoclonal	FACS, FA, IF, IHC	H
10-3530	Ly-6C	ER-MP20	Rat IgG2a	Monoclonal	FACS, IHC-Fr,IHC	M
10-3549	Macrophages mature	25F9	Mouse IgG1	Monoclonal	FACS, IHC-Fr, IHC, WB	H
10-3527	MCP-1	ECE.2	Rat IgG1	Monoclonal	IHC-Fr, WB	M
10-3532	M-CSF	ER-MP58	Rat IgG2a	Monoclonal	FACS, IHC-Fr	M
10-3503	MD-1	MD113	Rat IgG2b	Monoclonal	FACS	M
10-3520	MD-2	18H10	Mouse IgG2b	Monoclonal	FACS,FA	H
10-3017	mTLR3	ABM24E5	Rat IgG2b k	Monoclonal	IHC,WB,FACS	H, M
10-3022	mTLR4	MTS510	Rat IgG2a, k	Monoclonal	FACS	M
10-3022-F	mTLR4	MTS510	Rat IgG2a, k	Monoclonal	FACS	M
10-3029	mTLR9	ABM4D70	Rat IgG2a, k	Monoclonal	WB,FACS	M
10-3029-F	mTLR9	ABM4D70	Rat IgG2a, k	Monoclonal	FACS	M
10-3029-NALE	mTLR9	ABM4D70	Rat IgG2a, k	Monoclonal	WB,FACS	M
10-3029-P	mTLR9	ABM4D70	Rat IgG2a, k	Monoclonal	FACS	M

Antibodies

Cat. No.	Antigen	Clone	Isotype	Clonality	Application	Reactivity
10-3012	MyD88	ABM2H20	Mouse IgG1, k	Monoclonal	WB,FACS	H, M
10-3012-F	MyD88	ABM2H20	Mouse IgG1, k	Monoclonal	FACS	H
10-3018	NALP3	ABM2D48	Mouse IgG2b k	Monoclonal	IHC,WB	H, M
10-3528	Neutrophils	NIMP-R14	Rat IgG2b	Monoclonal	FACS, IHC-Fr, FA, IHC	M
10-6001	OPG	ABM10D2	Mouse IgG1, k	Monoclonal	WB,FACS	H
10-6021	p105/p50	ABM20H5	Mouse IgG1, k	Monoclonal	WB	H
10-6009	P65	ABM1A16	Mouse IgG1, k	Monoclonal	FACS	H
10-3525	PECAM-1	MEC7.46	Rat IgG1	Monoclonal	FACS, IHC-Fr, IF, IP, IHC	M
10-3539	PECAM-1	BV8	Mouse IgG1	Monoclonal	FACS,IF, IP	H
10-3551	Punctin-1	1B2-8-14	Mouse IgG2b	Monoclonal	WB	H
10-6004	RANK	ABM10D5	Mouse IgG1, k	Monoclonal	IHC,WB	H, M
10-6006	RANKL	ABM10A7	Mouse IgG1, k	Monoclonal	WB,FACS	H, M
10-3519	sMD-2/TLR4	4H1	Mouse IgG1	Monoclonal	IHC,FACS	H
10-3535	TIM-4	Kat5-18	Hamster IgG	Monoclonal	FACS, FA,IF	M
10-3514	TLR1	GD2.F4	Mouse IgG1	Monoclonal	FACS,FA,IHC	H
10-3024	TLR10	ABM3C85	Mouse IgG2a, k	Monoclonal	WB	H
10-3026	TLR2	ABM3A87	Mouse IgG1, k	Monoclonal	IHC,WB,FACS	H, M
10-3026-AC	TLR2	ABM3A87	Mouse IgG1, k	Monoclonal	FACS	H, M
10-3026-F	TLR2	ABM3A87	Mouse IgG1, k	Monoclonal	FACS	H, M
10-3026-NALE	TLR2	ABM3A87	Mouse IgG1, k	Monoclonal	IHC,WB,FACS	H, M
10-3026-P	TLR2	ABM3A87	Mouse IgG1, k	Monoclonal	FACS	H, M
10-3505	TLR2	6C2	Rat IgG2b	Monoclonal	IP,FACS	M
10-3506	TLR2	T2.5	Mouse IgG1	Monoclonal	FACS,FA,IP,IHC	H, M
10-3507	TLR2	mT2.7	Mouse IgG2a	Monoclonal	FACS,IP,IHC,	M
10-3509	TLR2	mT2.4	Mouse IgG2b	Monoclonal	FACS,FA,IHC	M
10-3511	TLR2	TL2.3	Mouse IgG2a	Monoclonal	FACS,FA,IHC	H
10-3517	TLR2	TLR2.45	Mouse IgG1	Monoclonal	FACS,FA,IP	H
10-3004	TLR3	ABM15D5	Mouse IgG1, k	Monoclonal	FACS	H
10-3004-F	TLR3	ABM15D5	Mouse IgG1, k	Monoclonal	FACS	H
10-3004-P	TLR3	ABM15D5	Mouse IgG1, k	Monoclonal	FACS	H
10-3516	TLR3	TLR3.7	Mouse IgG1	Monoclonal	FACS,FA,IP	H
10-3010	TLR4	ABM19C4	Mouse IgG2b k	Monoclonal	IHC,FACS	H
10-3010-F	TLR4	ABM19C4	Mouse IgG2b k	Monoclonal	FACS	H
10-3010-NALE	TLR4	ABM19C4	Mouse IgG2b k	Monoclonal	IHC,FACS	H
10-3021	TLR4	HTA125	Mouse IgG2a	Monoclonal	FACS	H
10-3021-AC	TLR4	HTA125	Mouse IgG2a	Monoclonal	FACS	H
10-3021-P	TLR4	HTA125	Mouse IgG2a	Monoclonal	FACS	H
10-3522	TLR4	3C3	Mouse IgG1	Monoclonal	FACS,FA	H
10-3521	TLR4/MD-2	7E3	Mouse IgG1	Monoclonal	FACS	H
10-3013	TLR5	ABM22G1	Mouse IgG2a, k	Monoclonal	IHC,FACS	H
10-3013-F	TLR5	ABM22G1	Mouse IgG2a, k	Monoclonal	FACS	H
10-3013-NALE	TLR5	ABM22G1	Mouse IgG2a, k	Monoclonal	IHC,FACS	H
10-3014	TLR5	ABM22C2	Mouse IgG2a, k	Monoclonal	FACS	H
10-3002	TLR6	ABM1B50	Mouse IgG1, k	Monoclonal	WB,FACS	H

Antibodies

Cat. No.	Antigen	Clone	Isotype	Clonality	Application	Reactivity
10-3002-F	TLR6	ABM1B50	Mouse IgG1, k	Monoclonal	FACS	H
10-3002-NALE	TLR6	ABM1B50	Mouse IgG1, k	Monoclonal	WB,FACS	H
10-3518	TLR6	TLR6.127	Mouse IgG1	Monoclonal	FACS,IP,IHC	H
10-3015	TLR7	ABM2C27	Mouse IgG1, k	Monoclonal	IHC,FACS	H
10-3015-F	TLR7	ABM2C27	Mouse IgG1, k	Monoclonal	FACS	H
10-3015-NALE	TLR7	ABM2C27	Mouse IgG1, k	Monoclonal	IHC,FACS	H
10-3005	TLR8	ABM15F6	Mouse IgG1, k	Monoclonal	IHC,FACS	H
10-3005-F	TLR8	ABM15F6	Mouse IgG1, k	Monoclonal	FACS	H
10-3005-NALE	TLR8	ABM15F6	Mouse IgG1, k	Monoclonal	IHC,FACS	H
10-3003	TLR9	ABM1C51	Mouse IgG1, k	Monoclonal	IHC,WB,FACS	H, M
10-3003-F	TLR9	ABM1C51	Mouse IgG1, k	Monoclonal	FACS	H, M
10-3003-NALE	TLR9	ABM1C51	Mouse IgG1, k	Monoclonal	IHC,WB,FACS	H, M
10-3003-P	TLR9	ABM1C51	Mouse IgG1, k	Monoclonal	FACS	H, M
10-3504	TLR9	5G5	Mouse IgG2a	Monoclonal	IHC,FACS	M
10-3537	TNF-alpha	52B83	Mouse IgG1	Monoclonal	FACS, WB, IHC-Fr	H
10-3538	TNF-alpha	T1	Mouse IgG1	Monoclonal	FACS, FA,WB	H
10-3533-F	TNF-RI	55R-170	Hamster IgG	Monoclonal	FACS, FA,IP	M
10-6013	TRAF5	ABM12A2	Mouse IgG1, k	Monoclonal	WB	H
10-6002	TRF2	ABM10H3	Mouse IgG1, k	Monoclonal	IHC,WB	H
10-3534	VCAM-1	6C7.1	Rat IgG1	Monoclonal	FACS, IHC-Fr, FA, IF, IP	M
10-3558	VCAM-1	1G11B1	Mouse IgG1	Monoclonal	FACS, IHC-Fr, FA, IF, IP	H
11-3035	AIMP1		Rabbit IgG	Polyclonal	WB	H
11-3026	Cactin		Rabbit IgG	Polyclonal	WB	H
11-6003	CUEDC2		Rabbit IgG	Polyclonal	WB	H
11-3014	DUBA		Rabbit IgG	Polyclonal	WB	H, M
11-6010	ERS25		Rabbit IgG	Polyclonal	WB	H
11-3031	Gbp1		Rabbit IgG	Polyclonal	WB,IHC	H
11-3047	TLR5		Rabbit IgG	Polyclonal	WB	H
11-3040	HMGB1		Rabbit IgG	Polyclonal	WB	H
11-3029	IMPDHII		Rabbit IgG	Polyclonal	WB	H
11-3046	IRAK2		Rabbit IgG	Polyclonal	WB	H, M, R
11-3039	m TLR4		Rabbit IgG	Polyclonal	WB	M
11-3036	m TLR9		Rabbit IgG	Polyclonal	WB	M
11-3025	mTLR3		Rabbit IgG	Polyclonal	WB	M
11-3015	MyD88		Rabbit IgG	Polyclonal	WB	H
11-3011	NALP10		Rabbit IgG	Polyclonal	WB	H
11-3008	NALP2		Rabbit IgG	Polyclonal	WB	H
11-3024	NALP3		Rabbit IgG	Polyclonal	WB	H
11-6005	NFKBIL1		Rabbit IgG	Polyclonal	WB	H
11-6012	NIK		Rabbit IgG	Polyclonal	WB	H, M
11-6002	p65		Rabbit IgG	Polyclonal	WB	H
11-6007	RBCK1		Rabbit IgG	Polyclonal	WB	H
11-6006	RNF31		Rabbit IgG	Polyclonal	WB	H
11-6001	TAB3		Rabbit IgG	Polyclonal	WB	H

Antibodies

Cat. No.	Antigen	Clone	Isotype	Clonality	Application	Reactivity
11-3041	TLR1		Rabbit IgG	Polyclonal	WB	H, M
11-3020	TRIL		Rabbit IgG	Polyclonal	WB	H
11-3023	TxNIP/VDUP1		Rabbit IgG	Polyclonal	WB	H
11-3009	USP7		Rabbit IgG	Polyclonal	WB	H
11-3030	Viperin		Rabbit IgG	Polyclonal	WB	H, M

Reporter Cell Line

Cat. No.	Category	Product Name	Application
14-116ACL	Reporter Cell Lines	IL-6 LEEPORTE™ Luciferase Reporter-NIH 3T3 Cell Line	Functional Assay
14-101ACL	Reporter Cell Lines	IL-8 LEEPORTE™ Luciferase Reporter-RAW264.7 Cell Line	Functional Assay
14-125ACL	Reporter Cell Lines	NF-kB LEEPORTE™ Luciferase Reporter-HEK293 Cell Line	Functional Assay
14-142ACL	Reporter Cell Lines	NF-kB LEEPORTE™ Luciferase Reporter-Jurkat Cell Line	Functional Assay
14-100ACL	Reporter Cell Lines	NF-kB LEEPORTE™ Luciferase Reporter-RAW264.7 Cell Line	Functional Assay
14-117ACL	Reporter Cell Lines	Nrf2 LEEPORTE™ Luciferase Reporter-MCF7 Cell Line	Functional Assay
14-120ACL	Reporter Cell Lines	RIG-I/NF-kB LEEPORTE™ Luciferase Reporter-HEK293T Cell Line	Functional Assay
14-127ACL	Reporter Cell Lines	TLR2/NF-kB LEEPORTE™ Luciferase Reporter-HEK293 Cell Line	Functional Assay
14-122ACL	Reporter Cell Lines	TLR3/IFNB LEEPORTE™ Luciferase Reporter-HEK293 Cell Line	Functional Assay
14-123ACL	Reporter Cell Lines	TLR3/ISRE LEEPORTE™ Luciferase Reporter-HEK293 Cell Line	Functional Assay
14-128ACL	Reporter Cell Lines	TLR3/NF-kB LEEPORTE™ Luciferase Reporter-HEK293 Cell Line	Functional Assay
14-124ACL	Reporter Cell Lines	TLR4/IL-8 LEEPORTE™ Luciferase Reporter-HeLa Cell Line	Functional Assay
14-139ACL	Reporter Cell Lines	TLR5/NF-kB LEEPORTE™ Luciferase Reporter-HEK293 Cell Line	Functional Assay
14-129ACL	Reporter Cell Lines	TLR7/NF-kB LEEPORTE™ Luciferase Reporter-HEK293 Cell Line	Functional Assay
14-130ACL	Reporter Cell Lines	TLR8/NF-kB LEEPORTE™ Luciferase Reporter-HEK293 Cell Line	Functional Assay
14-131ACL	Reporter Cell Lines	TLR9/NF-kB LEEPORTE™ Luciferase Reporter-HEK293 Cell Line	Functional Assay
14-105ACL	Reporter Cell Lines	TNF-alpha LEEPORTE™ Luciferase Reporter-HEK293 Cell Line	Functional Assay
14-106ACL	Reporter Cell Lines	TNF-alpha LEEPORTE™ Luciferase Reporter-RAW264.7 Cell Line	Functional Assay
14-107ACL	Reporter Cell Lines	TNF-beta LEEPORTE™ Luciferase Reporter-HEK293 Cell Line	Functional Assay
14-108ACL	Reporter Cell Lines	TNF-beta LEEPORTE™ Luciferase Reporter-RAW264.7 Cell Line	Functional Assay

TLR Ligands

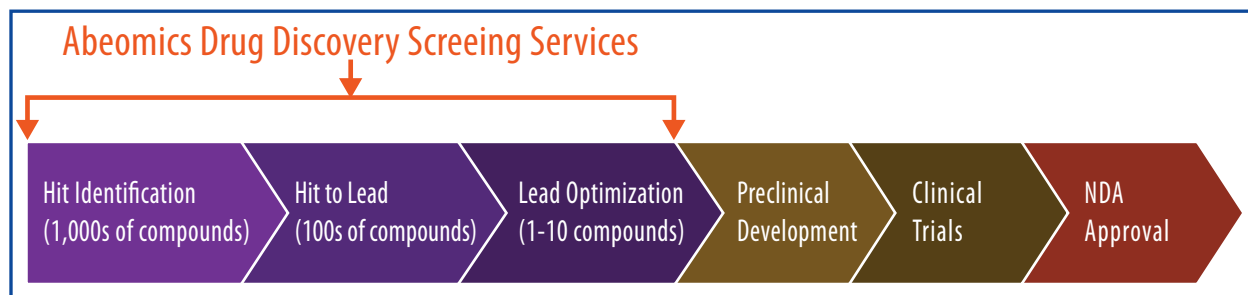
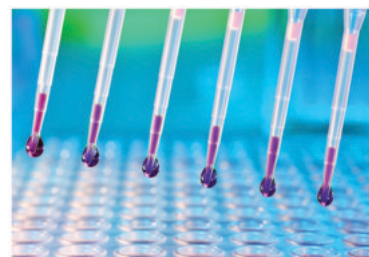
Cat. No.	Category	Product Name	Application
15-1019	TLR Ligands	CpG ODN (1668), TLR9 ligand (Class B)	Functional Assay
15-1018	TLR Ligands	CpG ODN (1826), TLR9 ligand (Class B)	Functional Assay
15-1017	TLR Ligands	CpG ODN (2006), TLR9 ligand (Class B)	Functional Assay
15-1021	TLR Ligands	CpG ODN (2216), TLR9 ligand (Class A)	Functional Assay
15-1022	TLR Ligands	CpG ODN (C274), TLR9 ligand (Class C)	Functional Assay
15-1023	TLR Ligands	CpG ODN (C792), TLR9 ligand (Class C)	Functional Assay
15-1014	TLR Ligands	Flagellin	Functional Assay
15-1015	TLR Ligands	FSL-1	Functional Assay
15-1016	TLR Ligands	Imidazoquinoline Resiquimod (R-848)	Functional Assay
15-1010	TLR Ligands	Imiquimod	Functional Assay
15-1013	TLR Ligands	LPS	Functional Assay
15-1011	TLR Ligands	Pam3CSK4	Functional Assay
15-1012	TLR Ligands	Poly(I).Poly(C) HMW	Functional Assay
15-1024	TLR Ligands	Zyosan	Functional Assay

Our technical expertise in development of products for studying cell signaling and molecular mechanisms has allowed us to deliver better assay services to the clients from Biotech and Pharmaceutical companies as well as Academic Institutes in need of assay development and evaluation of compounds by a variety of protocols - Target Reporter Assay, Protein Array Assay, Cytotoxicity Assay, Western Blotting, Flow Cytometry and ELISA.

Drug discovery and development requires in-depth knowledge in targeted areas of biology, and experience in utilization of specific experimental platforms. Consider Abeomics as an extension of your team.

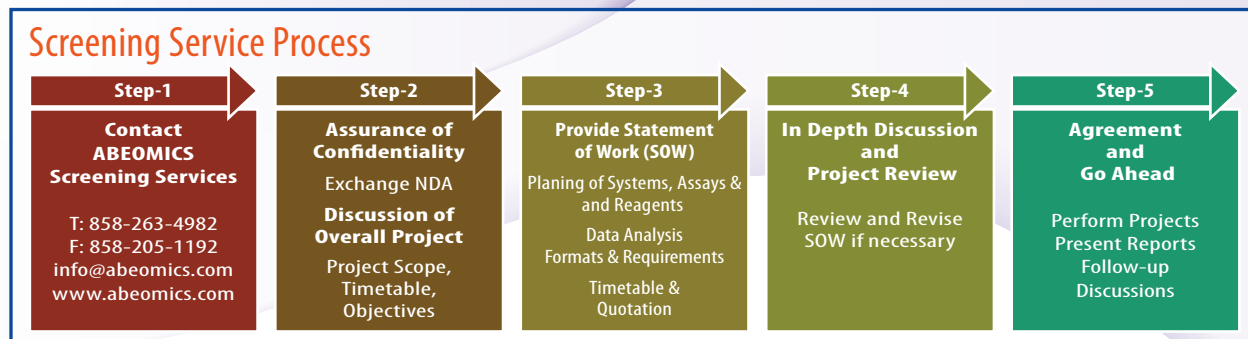
Assay Development:

Speak with us about your needs to develop and optimize dedicated cell-based and immunologic assay for your discovery programs.



Compound Screening:

We specialize in relevant methodologies including Luciferase assays to identify active compounds that modulate a particular biomolecular pathway, such as Th17, NF-κB, T regulatory pathways, etc.



Product Categories

- Antibodies
- Reporter Cell Lines
- TLR Ligands

A microscopic image of tissue, likely stained with hematoxylin and eosin (H&E), showing cellular structures and a central lumen. A blue circular callout with a gold border is overlaid on the right side of the image, containing the text 'Releasing Soon CAR-T Reagents'.

**Releasing Soon
CAR-T
Reagents**

Contact Us

9853 Pacific Heights Blvd. Suite D.
San Diego, CA 92121 USA
Tel: +1-858-263-4982 | Fax: +1-858-205-1192
Email: support@abeomics.com
www.abeomics.com

☎ +1-858-263-4982

✉ support@abeomics.com