

Immunology

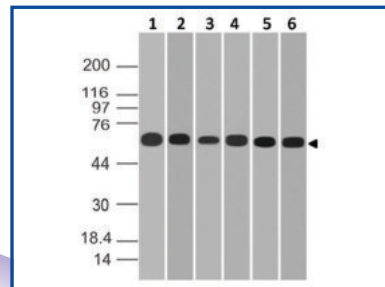
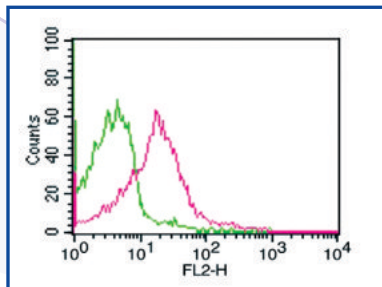
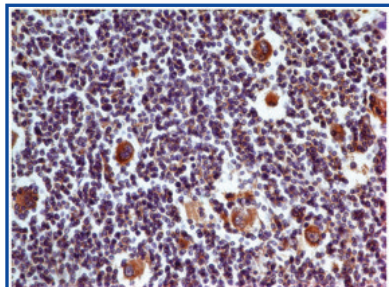
Monoclonal Antibody to hPD-L1

Product Code : 10-7562

Clone Name : ABM4E54

Application : IHC, FACS, WB

Reactivity : Human



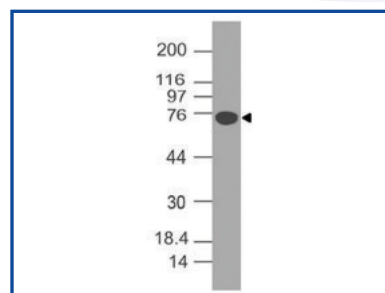
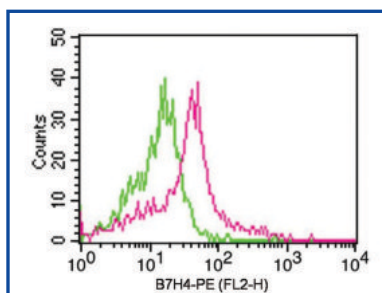
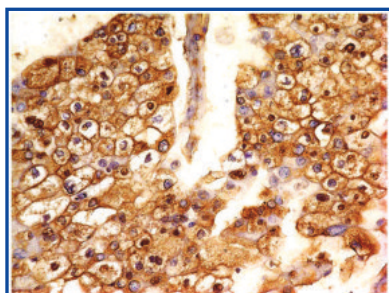
Monoclonal antibody to B7-H4

Product Code : 10-4172

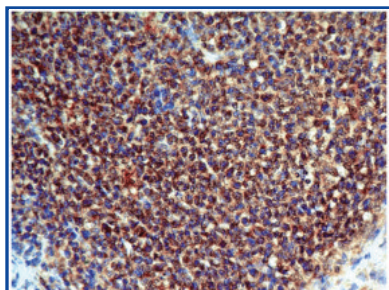
Clone Name : ABM53A6

Application : IHC, FACS, WB

Reactivity : Human



Monoclonal Antibody to CD137



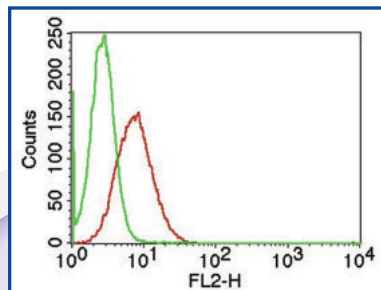
Product Code : 10-7620

Clone Name : ABM3D3.2E8

Application : IHC, WB

Reactivity : Human

Monoclonal Antibody to IL-17A



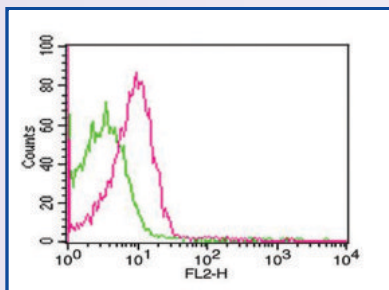
Product Code : 10-4007

Clone Name : ABM2B14

Application : FACS

Reactivity : Human

Monoclonal Antibody to FOXP3



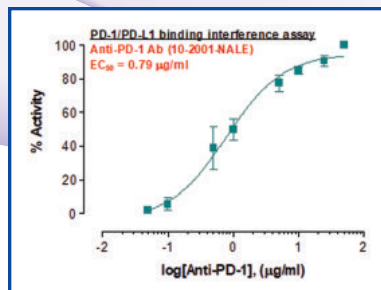
Product Code : 10-4074

Clone Name : 3G3

Application : FACS

Reactivity : Human

Rec. hPD-1 rabbit monoclonal Antibody



Product Code : 10-2001

Clone Name : ABMRR01

Application : FA, FACS, WB

Reactivity : Human

Antibodies

Cat. No.	Antigen	Clone	Isotype	Clonality	Application	Reactivity
10-4154	B7-2/CD86	BU63	Mouse IgG1, k	Monoclonal	FACS	H
10-4154-NALE	B7-2/CD86	BU63	Mouse IgG1, k	Monoclonal	FACS	H
10-4172	B7H4	ABM53A6	Mouse IgG2a, k	Monoclonal	WB, IHC, FACS	H
10-4169	BST 2	ABM52D8	Mouse IgG1, k	Monoclonal	WB, FACS	H, M, R
10-4190	C9 neoepitope	aE11	Mouse IgG2a, k	Monoclonal	IHC	H
10-4047	CADM1	ABM2A73	Rat IgG1, k	Monoclonal	FACS	H
10-4131	CD10	CB-CALLA	Mouse IgG2b, k	Monoclonal	FACS	H
10-4131-F	CD10	CB-CALLA	Mouse IgG2b, k	Monoclonal	FACS	H
10-7560	CD10	ABM4A52	Mouse IgG2b, k	Monoclonal	WB, IHC, FACS	H
10-4135	CD100	ABM4A61	Mouse IgG1, k	Monoclonal	FACS	H
10-4135-F	CD100	ABM4A61	Mouse IgG1, k	Monoclonal	FACS	H
10-4147	CD106	BK9	Mouse IgG1, k	Monoclonal	FACS	H
10-4145	CD11a	DF1524	Mouse IgG1, k	Monoclonal	FACS	H
10-4145-F	CD11a	DF1524	Mouse IgG1, k	Monoclonal	FACS	H
10-4157	CD11a	Cris3	Mouse IgG2b, k	Monoclonal	FACS	H
10-4158	CD11b	M1/70	Rat IgG2b, k	Monoclonal	FACS	H, M
10-4158-F	CD11b	M1/70	Rat IgG2b, k	Monoclonal	FACS	H, M
10-7566	CD11c	ABM4C58	Mouse IgG2b, k	Monoclonal	IHC, FACS	H
10-4128	CD13	BF10	Mouse IgG1, k	Monoclonal	FACS	H
10-4128-F	CD13	BF10	Mouse IgG1, k	Monoclonal	FACS	H
10-7620	CD137	ABM3D3.2E8	Mouse IgG1, k	Monoclonal	IHC, WB	H
10-7621	CD137	ABM2B2.1A5	Mouse IgG1, k	Monoclonal	WB	H
10-4077	CD14	RPA-M1	Mouse IgG1, k	Monoclonal	FACS	H
10-4077-F	CD14	RPA-M1	Mouse IgG1, k	Monoclonal	FACS	H
10-4077-NALE	CD14	RPA-M1	Mouse IgG1, k	Monoclonal	FACS	H
10-4077-P	CD14	RPA-M1	Mouse IgG1, k	Monoclonal	FACS	H
10-4141	CD16	CB16	Mouse IgG1, k	Monoclonal	FACS	H
10-4126	CD16/32	2.4G2	Rat IgG2b, k	Monoclonal	FACS	M
10-4048	CD161	ABM2D74	Mouse IgG1, k	Monoclonal	WB, IHC, FACS	H
10-4049	CD161	ABM27F5	Mouse IgG2b, k	Monoclonal	FACS	H
10-4006	CD19	1D3	Rat IgG2a, k	Monoclonal	FACS	M
10-4075	CD19	CB19	Mouse IgG1, k	Monoclonal	WB, FACS	H
10-4075-F	CD19	CB19	Mouse IgG1, k	Monoclonal	FACS	H
10-4127	CD19	SJ25C1	Mouse IgG1, k	Monoclonal	FACS	H
10-4127-F	CD19	SJ25C1	Mouse IgG1, k	Monoclonal	FACS	H
10-4148	CD195	12D1	Mouse IgG2a, k	Monoclonal	FACS	H
10-4100	CD196	ABM40H1	Rat IgG2a, k	Monoclonal	WB	M
10-4133	CD1a	CBT6	Mouse IgG1, k	Monoclonal	FACS	H
10-4155	CD20	B9E9	Mouse IgG2a, k	Monoclonal	FACS	H
10-4155-F	CD20	B9E9	Mouse IgG2a, k	Monoclonal	FACS	H
10-4162	CD20	ABM46C7	Mouse IgG2b, k	Monoclonal	WB, FACS	H
10-4162-F	CD20	ABM46C7	Mouse IgG2b, k	Monoclonal	FACS	H
10-4175	CD23	152-5E5	Mouse IgG1, k	Monoclonal	FACS	H
10-4175-F	CD23	152-5E5	Mouse IgG1, k	Monoclonal	FACS	H

Antibodies

Cat. No.	Antigen	Clone	Isotype	Clonality	Application	Reactivity
10-4187	CD24	ML5	Mouse IgG2a, k	Monoclonal	FACS	H
10-4088	CD25	PC61	Rat IgG1	Monoclonal	FACS	M
10-4088-F	CD25	PC61	Rat IgG1	Monoclonal	FACS	M
10-4125	CD25	7G7B6	Mouse IgG2a, k	Monoclonal	FACS	H
10-4125-AC	CD25	7G7B6	Mouse IgG2a, k	Monoclonal	FACS	H
10-4125-F	CD25	7G7B6	Mouse IgG2a, k	Monoclonal	FACS	H
10-4125-P	CD25	7G7B6	Mouse IgG2a, k	Monoclonal	FACS	H
10-4137	CD28	CB28	Mouse IgG1, k	Monoclonal	FACS	H
10-4137-F	CD28	CB28	Mouse IgG1, k	Monoclonal	FACS	H
10-4142	CD29	C29MOON	Mouse IgG1, k	Monoclonal	FACS	H
10-4089	CD3	OKT3	Mouse IgG2a, k	Monoclonal	FACS	H
10-4123	CD3	145-2C11	Hamster IgG	Monoclonal	FACS	M
10-4179	CD3	ABM1RV9	Mouse IgG1	Monoclonal	FACS	H
10-4089-AC	CD3	OKT3	Mouse IgG2a, k	Monoclonal	FACS	H
10-4089-F	CD3	OKT3	Mouse IgG2a, k	Monoclonal	FACS	H
10-4089-NALE	CD3	OKT3	Mouse IgG2a, k	Monoclonal	FACS	H
10-4089-P	CD3	OKT3	Mouse IgG2a, k	Monoclonal	FACS	H
10-4123-F	CD3	145-2C11	Hamster IgG	Monoclonal	FACS	M
10-7529	CD31	PECAM-1	Mouse IgG1, k	Monoclonal	IHC, FACS	H
10-7529-F	CD31	PECAM-1	Mouse IgG1, k	Monoclonal	FACS	H
36-3005	CD31	C31.7	Mouse IgG1, k	Monoclonal	IHC, WB	H
10-4064	CD33	ABM29D3	Mouse IgG2a, k	Monoclonal	WB, IHC, FACS	H
10-4138	CD33	wm53	Mouse IgG1, k	Monoclonal	FACS	H
36-3010	CD34	ICO-115	Mouse IgG1, k	Monoclonal	FACS	H
10-4153	CD36	1E8	Mouse IgG1, k	Monoclonal	FACS	H
10-4149	CD38	FS02	Mouse IgG1, k	Monoclonal	FACS	H
10-4109	CD39	ABM41E2	Mouse IgG2b, k	Monoclonal	WB	M
10-7561	CD3e	ABM45B3	Mouse IgG2b, k	Monoclonal	IHC, WB	H
10-4090	CD4	RPA-T4	Mouse IgG1, k	Monoclonal	FACS	H
10-4090-AC	CD4	RPA-T4	Mouse IgG1, k	Monoclonal	FACS	H
10-4090-F	CD4	RPA-T4	Mouse IgG1, k	Monoclonal	FACS	H
10-4092	CD4	GK1.5	Rat IgG2b, k	Monoclonal	FACS	M
10-4092-F	CD4	GK1.5	Rat IgG2b, k	Monoclonal	FACS	M
10-4159	CD4	OKT4	Mouse IgG2b, k	Monoclonal	FACS	H
10-4159-AC	CD4	OKT4	Mouse IgG2b, k	Monoclonal	FACS	H
10-4159-P	CD4	OKT4	Mouse IgG2b, k	Monoclonal	FACS	H
10-4178	CD4	ABM1RV7	Mouse IgG2a, k	Monoclonal	FACS	H
10-4178-F	CD4	ABM1RV7	Mouse IgG2a, k	Monoclonal	FACS	H
36-3009	CD43	DF-T1	Mouse IgG1, k	Monoclonal	IHC, FACS	H
10-4193	CD43	WEN3	Mouse IgG1	Monoclonal	FACS	R
10-7516	CD44	156-3C11	Mouse IgG2a, k	Monoclonal	WB, IHC, FACS	H
10-7516-F	CD44	156-3C11	Mouse IgG2a, k	Monoclonal	FACS	H
10-4185	CD45	EO-1	Mouse IgG2a	Monoclonal	WB, IHC, FACS	H
10-4156	CD45R	BRA-11G	Mouse IgG1, k	Monoclonal	FACS	H

Antibodies

Cat. No.	Antigen	Clone	Isotype	Clonality	Application	Reactivity
36-3014	CD45RA	158-4D3	Mouse IgG2a, k	Monoclonal	IHC, FACS	H
10-4160	CD47	B6H12	Mouse IgG1, k	Monoclonal	FACS	H
10-4160-F	CD47	B6H12	Mouse IgG1, k	Monoclonal	FACS	H
10-4176	CD48	ABM4h95	Mouse IgG2a	Monoclonal	FACS	H
10-4151	CD50	101-1D2	Mouse IgG2a, k	Monoclonal	FACS	H
10-4151-F	CD50	101-1D2	Mouse IgG2a, k	Monoclonal	FACS	H
10-4152	CD50	186-2G9	Mouse IgG2b, k	Monoclonal	FACS	H
10-4152-F	CD50	186-2G9	Mouse IgG2b, k	Monoclonal	FACS	H
10-7504	CD56	123C3	Mouse IgG1, k	Monoclonal	IHC, FACS	H
10-4180	CD5L	ABM55F1	Mouse IgG2b, k	Monoclonal	WB, FACS	H
10-4130	CD6	SPV14	Mouse IgG2a, k	Monoclonal	FACS	H
10-4130-F	CD6	SPV14	Mouse IgG2a, k	Monoclonal	FACS	H
10-4122	CD64	32.2	Mouse IgG1, k	Monoclonal	FACS	H
10-4171	CD68	ABM53F5	Mouse IgG2b, k	Monoclonal	WB, FACS	H
10-4171-F	CD68	ABM53F5	Mouse IgG2b, k	Monoclonal	FACS	H
10-4110	CD69	ABM39A4	Mouse IgG2a, k	Monoclonal	WB, IHC, FACS	H
10-4184	CD69	FN61	Mouse IgG1	Monoclonal	IHC, FACS	H
10-4192	CD69	FN50	Mouse IgG1	Monoclonal	IHC, FACS	H
10-4129	CD7	BF12	Mouse IgG1, k	Monoclonal	FACS	H
10-4129-F	CD7	BF12	Mouse IgG1, k	Monoclonal	FACS	H
10-4144	CD70	BU69	Mouse IgG1, k	Monoclonal	FACS	H
10-4106	CD73	ABM40E2	Mouse IgG2a, k	Monoclonal	WB, IHC, FACS	H
36-3035	CD74w	LN-2	Mouse IgG1, k	Monoclonal	IHC	H
10-4183	CD78	FN1	Mouse IgG1	Monoclonal	FACS	H
10-4091	CD8	RPA-T8	Mouse IgG1, k	Monoclonal	FACS	H
10-4091-AC	CD8	RPAT8	Mouse IgG1, k	Monoclonal	FACS	H
10-4091-F	CD8	RPAT8	Mouse IgG1, k	Monoclonal	FACS	H
10-4108	CD80	ABM40G8	Mouse IgG2b, k	Monoclonal	WB, FACS	H
10-4136	CD95	BR18	Mouse IgG1, k	Monoclonal	FACS	H
10-4140	CD98	LN-1	Mouse IgG1, k	Monoclonal	FACS	H
10-4168	CD98	ABM5A27	Mouse IgG1, k	Monoclonal	WB, FACS	H
10-4168-F	CD98	ABM5A27	Mouse IgG1, k	Monoclonal	FACS	H
10-7554	CDC25A	ABM4A46	Mouse IgG2b, k	Monoclonal	IHC, WB	H
36-3003	CK19	A53-B/A2	Mouse IgG2a, k	Monoclonal	IHC, WB	H
10-4054	CLEC1	ABM2H82	Mouse IgG2b, k	Monoclonal	FACS	H
10-4120	CLEC4E	ABM42C6	Mouse IgG1, k	Monoclonal	WB, FACS	H
10-4020	CIEC9A	ABM23H8	Mouse IgG1, k	Monoclonal	WB	H
10-7598	CLIP	ABM52H4	Mouse IgG1, k	Monoclonal	WB	H
10-10020	Dc-Sign	ABM47B7	Mouse IgG2b, k	Monoclonal	WB, FACS	H
10-4046	DDX3	ABM27H2	Mouse IgG2b, k	Monoclonal	WB	H, M
10-4013	Dectin-2	ABM2H28	Mouse IgG2, k	Monoclonal	WB, IHC, FACS	H, M
10-4104	EBI3	ABM40H9	Mouse IgG2b, k	Monoclonal	WB	H
10-4021	EBI3 Mouse	ABM2C40	Rat IgG2b, k	Monoclonal	WB	M
10-7503	EpCAM	ABM2C92	Mouse IgG2b, k	Monoclonal	IHC, WB	H

Antibodies

Cat. No.	Antigen	Clone	Isotype	Clonality	Application	Reactivity
36-3012	EpCAM	VU-1D9	Mouse IgG1, k	Monoclonal	IHC,FACS	H
10-3028	EPS8	ABM4H15	Mouse IgG1, k	Monoclonal	WB	H
10-4082	Folate Receptor 4	TH6	Rat IgG2b, k	Monoclonal	FACS	M
10-4163-F	FOXO1	ABM4E66	Mouse IgG2b, k	Monoclonal	FACS	H
10-4074	FOXP3	3G3	Mouse IgG1, k	Monoclonal	FACS	H
10-4074-F	FOXP3	3G3	Mouse IgG1, k	Monoclonal	FACS	H
10-7550	Galectin 13	ABM4E42	Mouse IgG2b, k	Monoclonal	IHC,WB	H
10-7618	Galectin-1	ABM5B54	Mouse IgG2b, k	Monoclonal	WB, IHC, FACS	H, M
10-4080	Gitr	DTA-1	Rat IgG2b, Lambda	Monoclonal	FACS	M
10-4177	HLA-DP	ABM54B6	Mouse IgG2b	Monoclonal	FACS	H
10-4116	HLADR	L243	Mouse IgG2a, k	Monoclonal	FACS	H
10-4024	HMGB1	ABM24D3	Mouse IgG1, k	Monoclonal	WB, IHC, FACS	H
10-7616	ICOS ligand	ABM5E52	Mouse IgG2b, k	Monoclonal	WB	H
10-4098	IL-17 RA	ABM4A10	Mouse IgG2b, k	Monoclonal	ELISA,WB	H
10-4044	IL-17RE	ABM2G70	Mouse IgG2b, k	Monoclonal	WB	H, M
10-4038	IL-1beta	ABM2C64	Mouse IgG1, k	Monoclonal	ELISA, WB, FACS	H
10-4030	IL-23R	ABM25G4	Mouse IgG1, k	Monoclonal	WB	H
10-4166	IL-36R	ABM47A2	Mouse IgG2b	Monoclonal	WB, FACS	H
10-4029	IL-17C	ABM25F3	Mouse IgG1, k	Monoclonal	FACS	H
36-3011	Kappa	L1C1	Mouse IgG1, k	Monoclonal	IHC	H
10-4060	MAVS	ABM28C8	Mouse IgG2b, k	Monoclonal	WB	H
10-4134	MHCII/HLA DQ	SPVL3	Mouse IgG2a, k	Monoclonal	FACS	H
10-7601	MMP2	ABM5A31	Mouse IgG1, k	Monoclonal	WB	H
10-7612	mPD-1	ABM5F42	Rat IgG2b, k	Monoclonal	FACS	M
10-7615	MSI1	ABM5D50	Mouse IgG2b, k	Monoclonal	WB, FACS	H
10-7613	MSI2	ABM5A48	Mouse IgG2b, k	Monoclonal	WB, FACS	H
10-4165	MUL1	ABM4F71	Mouse IgG1	Monoclonal	WB	H
10-3012	MyD88	ABM2H20	Mouse IgG1, k	Monoclonal	WB, FACS	H, M
10-3012-F	MyD88	ABM2H20	Mouse IgG1, k	Monoclonal	FACS	H
10-3018	NALP3	ABM2D48	Mouse IgG2b, k	Monoclonal	IHC, WB	H, M
10-4191	NKG2A	WEN28	Mouse IgG1, k	Monoclonal	FA, IP, FACS, IF	R
10-4194	NKp46	WEN23	Mouse IgG1, k	Monoclonal	FA,IP,IHC,FACS,WB	R
10-2001	PD-1	ABMRR01	Rabbit IgG	Monoclonal	WB, FACS	H
10-2001-F	PD-1	ABMRR01	Rabbit IgG	Monoclonal	FACS	H
10-2001-NALE	PD-1	ABMRR01	Rabbit IgG	Monoclonal	FA, WB, FACS	H
10-7562	PDL1	ABM4E54	Mouse IgG2a, k	Monoclonal	WB, IHC, FACS	H
10-7562-F	PDL1	ABM4E54	Mouse IgG2a, k	Monoclonal	FACS	H
10-7562-NALE	PDL1	ABM4E54	Mouse IgG2a, k	Monoclonal	WB, IHC, FACS	H
10-7562-P	PDL1	ABM4E54	Mouse IgG2a, k	Monoclonal	FACS	H
10-7599	PDL-1	ABM5F25	Mouse IgG2b, k	Monoclonal	WB, IHC, FACS	H
10-7599-F	PDL-1	ABM5F25	Mouse IgG2b, k	Monoclonal	FACS	H
10-7599-NALE	PDL-1	ABM5F25	Mouse IgG2b, k	Monoclonal	WB, IHC, FACS	H
10-4102	RIG-I	ABM40B5	Mouse IgG1, k	Monoclonal	IHC, WB	H
10-4005	ROR Gamma	ABM21H2	Mouse IgG1	Monoclonal	WB,FACS	H

Antibodies

Cat. No.	Antigen	Clone	Isotype	Clonality	Application	Reactivity
10-4053	Runx3	ABM28D1	Mouse IgG2b, k	Monoclonal	WB,FACS	H
10-10003	S100A7/Psoriasis	ABM18A5	Mouse IgG1, k	Monoclonal	WB,FACS	H
10-4164	S100A8	ABM4A69	Rat IgG	Monoclonal	WB	M
10-4111	S100A8	ABM4D13	Mouse IgG1, k	Monoclonal	WB	H
10-4031	Siglec-H	ABM2B55	Rat IgG2a, k	Monoclonal	WB	M
10-4079	TIM-3	ABM3F21	Rat IgG1, k	Monoclonal	FACS	M
10-3024	TLR10	ABM3C85	Mouse IgG2a, k	Monoclonal	WB	H
10-3026	TLR2	ABM3A87	Mouse IgG1, k	Monoclonal	WB, IHC, FACS	H, M
10-3026-AC	TLR2	ABM3A87	Mouse IgG1, k	Monoclonal	FACS	H, M
10-3026-F	TLR2	ABM3A87	Mouse IgG1, k	Monoclonal	FACS	H, M
10-3026-NALE	TLR2	ABM3A87	Mouse IgG1, k	Monoclonal	WB, IHC, FACS	H, M
10-3026-P	TLR2	ABM3A87	Mouse IgG1, k	Monoclonal	FACS	H, M
10-3004	TLR3	ABM15D5	Mouse IgG1, k	Monoclonal	FACS	H
10-3004-F	TLR3	ABM15D5	Mouse IgG1, k	Monoclonal	FACS	H
10-3004-P	TLR3	ABM15D5	Mouse IgG1, k	Monoclonal	FACS	H
10-3017	TLR3	ABM24E5	Rat IgG2b, k	Monoclonal	WB, IHC, FACS	H, M
10-3010	TLR4	ABM19C4	Mouse IgG2b, k	Monoclonal	IHC, FACS	H
10-3010-F	TLR4	ABM19C4	Mouse IgG2b, k	Monoclonal	FACS	H
10-3010-NALE	TLR4	ABM19C4	Mouse IgG2b, k	Monoclonal	IHC, FACS	H
10-3021	TLR4	HTA125	Mouse IgG2a	Monoclonal	FACS	H
10-3021-AC	TLR4	HTA125	Mouse IgG2a	Monoclonal	FACS	H
10-3021-P	TLR4	HTA125	Mouse IgG2a	Monoclonal	FACS	H
10-3022	TLR4	MTS510	Rat IgG2a, k	Monoclonal	FACS	M
10-3022-F	TLR4	MTS510	Rat IgG2a, k	Monoclonal	FACS	M
10-3013	TLR5	ABM22G1	Mouse IgG2a, k	Monoclonal	IHC, FACS	H
10-3013-F	TLR5	ABM22G1	Mouse IgG2a, k	Monoclonal	FACS	H
10-3013-NALE	TLR5	ABM22G1	Mouse IgG2a, k	Monoclonal	IHC, FACS	H
10-3014	TLR5	ABM22C2	Mouse IgG2a, k	Monoclonal	FACS	H
10-3002	TLR6	ABM1B50	Mouse IgG1, k	Monoclonal	WB, FACS	H
10-3002-F	TLR6	ABM1B50	Mouse IgG1, k	Monoclonal	FACS	H
10-3002-NALE	TLR6	ABM1B50	Mouse IgG1, k	Monoclonal	WB, FACS	H
10-3015	TLR7	ABM2C27	Mouse IgG1, k	Monoclonal	IHC, FACS	H
10-3015-F	TLR7	ABM2C27	Mouse IgG1, k	Monoclonal	FACS	H
10-3015-NALE	TLR7	ABM2C27	Mouse IgG1, k	Monoclonal	IHC, FACS	H
10-3005	TLR8	ABM15F6	Mouse IgG1, k	Monoclonal	IHC, FACS	H
10-3005-F	TLR8	ABM15F6	Mouse IgG1, k	Monoclonal	FACS	H
10-3005-NALE	TLR8	ABM15F6	Mouse IgG1, k	Monoclonal	IHC, FACS	H
10-3003	TLR9	ABM1C51	Mouse IgG1, k	Monoclonal	WB, IHC, FACS	H, M
10-3003-F	TLR9	ABM1C51	Mouse IgG1, k	Monoclonal	FACS	H, M
10-3003-NALE	TLR9	ABM1C51	Mouse IgG1, k	Monoclonal	WB, IHC, FACS	H, M
10-3003-P	TLR9	ABM1C51	Mouse IgG1, k	Monoclonal	FACS	H, M
10-3029	TLR9	ABM4D70	Rat IgG2a, k	Monoclonal	WB, FACS	M
10-3029-F	TLR9	ABM4D70	Rat IgG2a, k	Monoclonal	FACS	M
10-3029-P	TLR9	ABM4D70	Rat IgG2a, k	Monoclonal	FACS	M

Antibodies

Cat. No.	Antigen	Clone	Isotype	Clonality	Application	Reactivity
10-4095	TNF-alpha	ABM3D89	Mouse IgG1, k	Monoclonal	ELISA	H
10-4150	TNF-alpha	MAB-1	Mouse IgG1, k	Monoclonal	ELISA	H
10-4057	TREX1	ABM2A85	Mouse IgG2b, k	Monoclonal	WB	H
10-4051	TSLP	ABM27H9	Mouse IgG2a, k	Monoclonal	WB, FACS	H, M
10-4058	TSLP Receptor	ABM28B6	Mouse IgG2a, k	Monoclonal	WB	H
10-4105	TSLPR	ABM3B96	Mouse IgG2b, k	Monoclonal	WB	H
10-7617	Vista	ABM5C53	Mouse IgG2b, k	Monoclonal	WB	H
11-3035	AIMP1		Rabbit IgG	Polyclonal	WB	H
11-4069	AIMP2		Rabbit IgG	Polyclonal	WB	H
11-4010	AIRE/APECED		Rabbit IgG	Polyclonal	WB	H
11-4011	Als2Cr2		Rabbit IgG	Polyclonal	WB	H
11-4074	BHLHE40		Rabbit IgG	Polyclonal	WB	H
11-4075	Blys		Rabbit IgG	Polyclonal	WB	H, M
11-3026	Cactin		Rabbit IgG	Polyclonal	WB	H
11-4037	CADM1		Rabbit IgG	Polyclonal	WB	H
11-4057	CD209		Rabbit IgG	Polyclonal	WB	H
11-4051	CLEC1		Rabbit IgG	Polyclonal	WB	H
11-4045	CLEC12A/MICL		Rabbit IgG	Polyclonal	WB	H
11-4050	CLEC4E		Rabbit IgG	Polyclonal	WB	H
11-4053	CLEC8A		Rabbit IgG	Polyclonal	WB	H
11-4073	DDX41		Rabbit IgG	Polyclonal	WB	H, M
11-3014	DUBA		Rabbit IgG	Polyclonal	WB	H, M
11-4017	EBI3, mouse		Rabbit IgG	Polyclonal	WB	M
11-4013	Embigin, EMB		Rabbit IgG	Polyclonal	WB	H
11-3031	Gbp1		Rabbit IgG	Polyclonal	WB, IHC	H
11-4002	GPR83		Rabbit IgG	Polyclonal	WB	H
11-3047	TLR5		Rabbit IgG	Polyclonal	WB	H
11-3040	HMGB1		Rabbit IgG	Polyclonal	WB	H
11-4068	Ifi202b		Rabbit IgG	Polyclonal	WB	M
11-4059	IFIT2		Rabbit IgG	Polyclonal	WB	H
11-4076	IL-18RAP		Rabbit IgG	Polyclonal	WB	H
11-4036	IL-37		Rabbit IgG	Polyclonal	WB	H
11-3028	IMPDHII		Rabbit IgG	Polyclonal	WB	H
11-3046	IRAK2		Rabbit IgG	Polyclonal	WB	H, M, R
11-3039	m TLR4		Rabbit IgG	Polyclonal	WB	M
11-3036	m TLR9		Rabbit IgG	Polyclonal	WB	M
11-4001	m BTLA		Rabbit IgG	Polyclonal	WB	M
11-3025	mTLR3		Rabbit IgG	Polyclonal	WB	M
11-3015	MyD88		Rabbit IgG	Polyclonal	WB	H
11-3011	NALP10		Rabbit IgG	Polyclonal	WB	H
11-3044	NALP2		Rabbit IgG	Polyclonal	WB	H
11-3024	NALP3		Rabbit IgG	Polyclonal	WB	H
11-4021	NR2F6		Rabbit IgG	Polyclonal	WB, IHC	H
11-4033	Nucleophosmin		Rabbit IgG	Polyclonal	WB, IHC	H

Antibodies

Cat. No.	Antigen	Clone	Isotype	Clonality	Application	Reactivity
11-4041	PU.1		Rabbit IgG	Polyclonal	WB	H
11-4029	RAGE		Rabbit IgG	Polyclonal	WB	H
11-4064	REG3A		Rabbit IgG	Polyclonal	WB	H
11-4025	S1PR1		Rabbit IgG	Polyclonal	WB	H
11-4052	SAMHD1		Rabbit IgG	Polyclonal	WB	H
11-4062	SGK1		Rabbit IgG	Polyclonal	WB	H
11-4035	Siglec9		Rabbit IgG	Polyclonal	WB	H
11-4039	SpiB		Rabbit IgG	Polyclonal	WB	H
11-4024	STING		Rabbit IgG	Polyclonal	WB	H
11-4012	SWAP70		Rabbit IgG	Polyclonal	WB	H
11-4014	Syndecan-4		Rabbit IgG	Polyclonal	WB	H
11-4070	(TIM-3)mouse		Rabbit IgG	Polyclonal	WB	M
11-4016	Tis7		Rabbit IgG	Polyclonal	WB	H
11-3041	TLR1		Rabbit IgG	Polyclonal	WB	M, H
11-4065	TOX		Rabbit IgG	Polyclonal	WB, IHC	H
11-3020	TRIL		Rabbit IgG	Polyclonal	WB	H
11-3023	TxNIP		Rabbit IgG	Polyclonal	WB	H
11-3004	UNC93B		Rabbit IgG	Polyclonal	WB	H
11-3009	USP7		Rabbit IgG	Polyclonal	WB	H
11-4056	VAV2		Rabbit IgG	Polyclonal	WB	H
11-3030	Viperin		Rabbit IgG	Polyclonal	WB	H
10-101	Mouse IgG1 Isotype Control	MOPC31C	Mouse IgG1	Monoclonal	IHC, FACS, IF	
10-101-F	Mouse IgG1 Isotype Control	MOPC31C	Mouse IgG1	Monoclonal	IHC, FACS, IF	
10-102	Mouse IgG2a Isotype Control	231	Mouse IgG2a	Monoclonal	IHC, FACS, IF	
10-102-F	Mouse IgG2a Isotype Control	231	Mouse IgG2a	Monoclonal	IHC, FACS, IF	
10-102-P	Mouse IgG2a Isotype Control	231	Mouse IgG2a	Monoclonal	IHC, FACS, IF	
10-103	Mouse IgG2b Isotype Control	MOPC 11	Mouse IgG2b	Monoclonal	IHC, FACS, IF	
10-103-F	Mouse IgG2b Isotype Control	MOPC 11	Mouse IgG2b	Monoclonal	IHC, FACS, IF	
10-105	Rat IgG1 Isotype Control	HRPN	Rat IgG1	Monoclonal	IHC, FACS, IF	
10-105-F	Rat IgG1 Isotype Control	HRPN	Rat IgG1	Monoclonal	IHC, FACS, IF	
10-106	Rat IgG2a Isotype Control	2A3	Rat IgG2a	Monoclonal	IHC, FACS, IF	
10-106-F	Rat IgG2a Isotype Control	2A3	Rat IgG2a	Monoclonal	IHC, FACS, IF	
10-107	Rat IgG2b Isotype Control	LTF-2	Rat IgG2b	Monoclonal	IHC, FACS, IF	
10-107-F	Rat IgG2b Isotype Control	LTF-2	Rat IgG2b	Monoclonal	IHC, FACS, IF	
11-201	Rabbit IgG Isotype Control		Rabbit IgG	Polyclonal	IHC, FACS, IF	
11-201-AC	Rabbit IgG Isotype Control		Rabbit IgG	Polyclonal	IHC, FACS, IF	
11-201-F	Rabbit IgG Isotype Control		Rabbit IgG	Polyclonal	IHC, FACS, IF	
11-201-PE	Rabbit IgG Isotype Control		Rabbit IgG	Polyclonal	IHC, FACS, IF	

Flowcytometry Staining Kits

Cat. No.	Description	Application	Content
17-1012	FLOW IntraCellular Staining Kit (IC FLOW)	FACS	100 Test
17-1013	CellSurface FLOW Staining Kit	FACS	100 Test
17-1014	Foxp3/Transcription Factor Staining Kit	FACS	100 Test

ELISA Kits

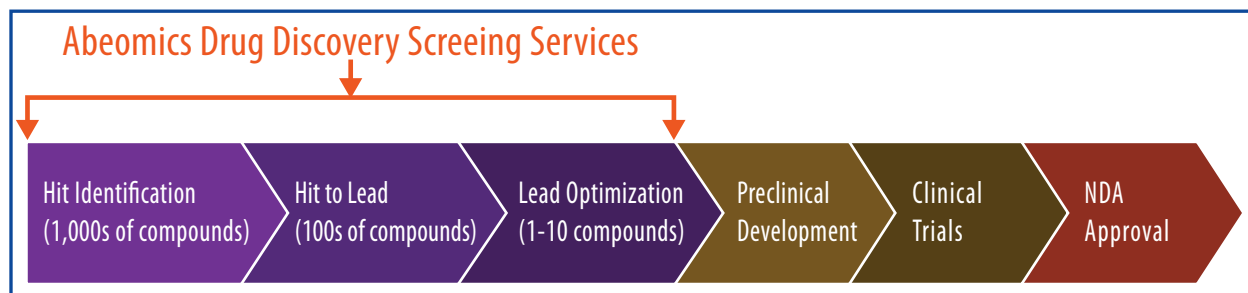
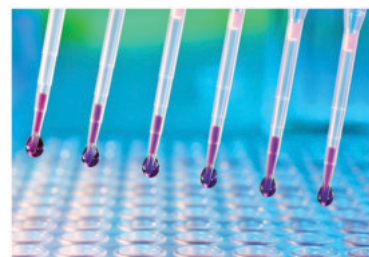
Cat. No.	Product Name	Content
90-2008	Human IL-18 (Interleukin 18) Pre-Coated ELISA Kit	1X 96 well Format (96 tests)
90-2010	Human MIF (Macrophage migration inhibitory factor) Pre-Coated ELISA Kit	1X 96 well Format (96 tests)
90-2067	Human IFN-Gamma (Interferon Gamma) Pre-Coated ELISA Kit	1 X 96 well Format (96 tests)
90-2076	Human IL-10 (Interleukin 10) Pre-Coated ELISA Kit	1X 96 well Format (96 tests)
90-2077	Human IL-11 (Interleukin 11) Pre-Coated ELISA Kit	1X 96 well Format (96 tests)
90-2078	Human IL-12p40 (Interleukin 12p40) Pre-Coated ELISA Kit	1X 96 well Format (96 tests)
90-2079	Human IL-15 (Interleukin 15) Pre-Coated ELISA Kit	1X 96 well Format (96 tests)
90-2080	Human IL-16 (Interleukin 16) Pre-Coated ELISA Kit	1X 96 well Format (96 tests)
90-2081	Human IL-1Alpha (Interleukin 1 Alpha) Pre-Coated ELISA Kit	1X 96 well Format (96 tests)
90-2082	Human IL-1beta (Interleukin 1 Beta) Pre-Coated ELISA Kit	1X 96 well Format (96 tests)
90-2083	Human IL-2 (Interleukin 2) Pre-Coated ELISA Kit	1X 96 well Format (96 tests)
90-2084	Human IL-20 (Interleukin 20) Pre-Coated ELISA Kit	1X 96 well Format (96 tests)
90-2085	Human IL-22 (Interleukin 22) Pre-Coated ELISA Kit	1X 96 well Format (96 tests)
90-2086	Human IL-24 (Interleukin 24) Pre-Coated ELISA Kit	1X 96 well Format (96 tests)
90-2087	Human IL-27 (Interleukin 27) Pre-Coated ELISA Kit	1X 96 well Format (96 tests)
90-2088	Human IL-29 (Interleukin 29) Pre-Coated ELISA Kit	1X 96 well Format (96 tests)
90-2089	Human IL-3 (Interleukin 3) Pre-Coated ELISA Kit	1X 96 well Format (96 tests)
90-2090	Human IL-31 (Interleukin-31) Pre-Coated ELISA Kit	1X 96 well Format (96 tests)
90-2091	Human IL-33 (Interleukin-33) Pre-Coated ELISA Kit	1X 96 well Format (96 tests)
90-2092	Human IL-4 (Interleukin 4) Pre-Coated ELISA Kit	1X 96 well Format (96 tests)
90-2093	Human IL-5 (Interleukin 5) Pre-Coated ELISA Kit	1X 96 well Format (96 tests)
90-2094	Human IL-6 (Interleukin 6) Pre-Coated ELISA Kit	1X 96 well Format (96 tests)
90-2095	Human IL-7 (Interleukin 7) Pre-Coated ELISA Kit	1X 96 well Format (96 tests)
90-2097	Human IL-8 (Interleukin 8) Pre-Coated ELISA Kit	1X 96 well Format (96 tests)
90-2103	Human MIP-1 α /CCL3 (Macrophage Inflammatory Protein-1alpha) Pre-Coated ELISA Kit	1X 96 well Format (96 tests)
90-2124	Human TIMP-1 (Metalloproteinase Inhibitor-1) Pre-Coated ELISA Kit	1X 96 well Format (96 tests)
90-2125	Human TIMP-2 (Metalloproteinase Inhibitor-2) Pre-Coated ELISA Kit	1X 96 well Format (96 tests)
90-2126	Human TIMP-3 (Metalloproteinase Inhibitor-3) Pre-Coated ELISA Kit	1X 96 well Format (96 tests)
90-2127	Human TIMP-4 (Metalloproteinase Inhibitor-4) Pre-Coated ELISA Kit	1X 96 well Format (96 tests)
90-2128	Human TNF alpha (Tumor Necrosis Factor Alpha) Pre-Coated ELISA Kit	1X 96 well Format (96 tests)
90-2129	Human TNF-Beta (Tumor Necrosis Factor Beta) Pre-Coated ELISA Kit	1X 96 well Format (96 tests)
90-2142	Human EPO (Erythropoietin) Pre-Coated ELISA Kit	1X 96 well Format (96 tests)
90-2193	Human IL-9 (Interleukin-9) Pre-Coated ELISA Kit	1X 96 well Format (96 tests)
90-2203	Human IL-32 (Interleukin 32) Pre-Coated ELISA Kit	1X 96 well Format (96 tests)
90-2235	Human IFN Alpha Pre-Coated ELISA Kit	1X 96 well Format (96 tests)
90-2238	Human IL-12 (p70) (Interleukin 12, p70) Pre-Coated ELISA Kit	1X 96 well Format (96 tests)
90-2239	Human IL-13 (Interleukin 13) Pre-Coated ELISA Kit	1X 96 well Format (96 tests)
90-2240	Human IL-17 (Interleukin-17) Pre-Coated ELISA Kit	1X 96 well Format (96 tests)
90-2241	Human IL-19 (Interleukin-19) Pre-Coated ELISA Kit	1X 96 well Format (96 tests)
90-2243	Human IL-23 (Interleukin-23) Pre-Coated ELISA Kit	1X 96 well Format (96 tests)
90-2246	Human IL-35 (Interleukin 35) Pre-Coated ELISA Kit	1X 96 well Format (96 tests)
90-2264	Mouse IL-7 (Interleukin 7) Pre-Coated ELISA Kit	1X 96 well Format (96 tests)
90-5001	Canine IL-12/p70 (Interleukin 12/p70) Pre-Coated ELISA Kit	1 X 96 well Format (96 tests)

Our technical expertise in development of products for studying cell signaling and molecular mechanisms has allowed us to deliver better assay services to the clients from Biotech and Pharmaceutical companies as well as Academic Institutes in need of assay development and evaluation of compounds by a variety of protocols - Target Reporter Assay, Protein Array Assay, Cytotoxicity Assay, Western Blotting, Flow Cytometry and ELISA.

Drug discovery and development requires in-depth knowledge in targeted areas of biology, and experience in utilization of specific experimental platforms. Consider Abeomics as an extension of your team.

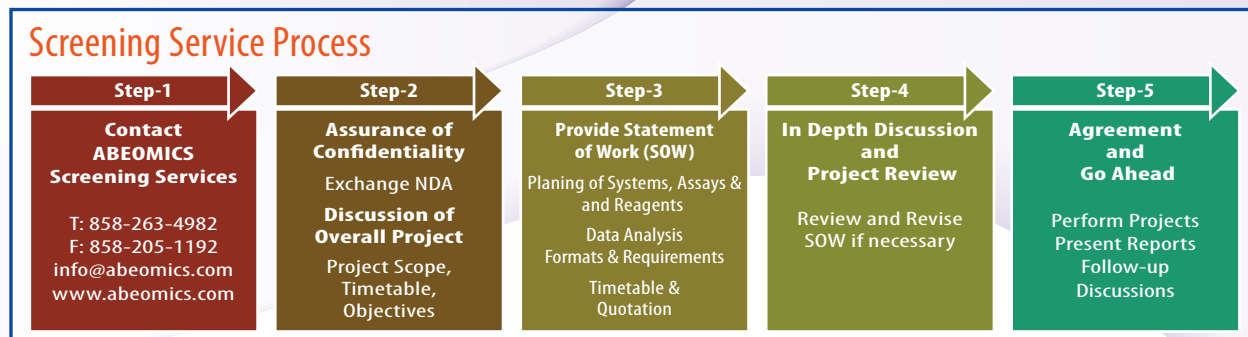
Assay Development:

Speak with us about your needs to develop and optimize dedicated cell-based and immunologic assay for your discovery programs.



Compound Screening:

We specialize in relevant methodologies including Luciferase assays to identify active compounds that modulate a particular biomolecular pathway, such as Th17, NF-κB, T regulatory pathways, etc.



Product Categories

- Antibodies
- Isotype Controls
- Reporter Cell Lines
- ELISA Kits
- Recombinant Proteins
- Flowcytometry Staining Kits



**Releasing Soon
CAR-T
Reagents**

Contact Us

9853 Pacific Heights Blvd. Suite D.
San Diego, CA 92121 USA
Tel: +1-858-263-4982 | Fax: +1-858-205-1192
Email: support@abeomics.com
www.abeomics.com

☎ +1-858-263-4982

✉ support@abeomics.com