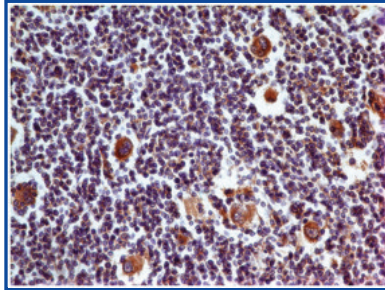


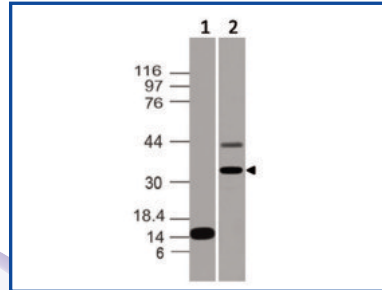
## Immune Checkpoint

## Monoclonal Antibody to hPD-L1



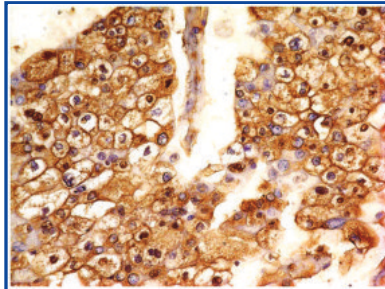
Product Code : 10-7562  
Clone Name : ABM4E54  
Application : IHC, FACS, WB  
Reactivity : Human

## Rabbit Monoclonal Antibody to CTLA-4



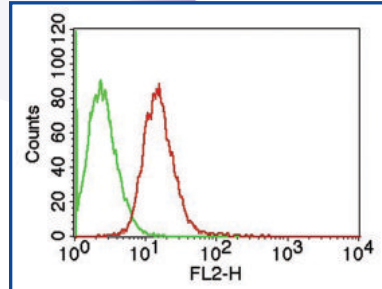
Product Code : 10-7633  
Clone Name : ABM2D9.1G3  
Application : IHC, FACS, WB  
Reactivity : Human

## Monoclonal antibody to B7-H4



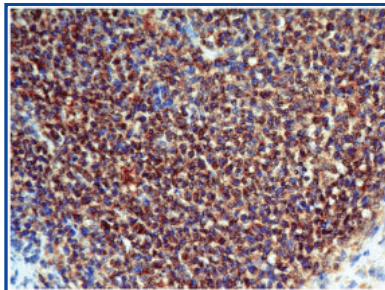
Product Code : 10-4172  
Clone Name : ABM53A6  
Application : IHC, FACS, WB  
Reactivity : Human

## Monoclonal Antibody to MSI-1



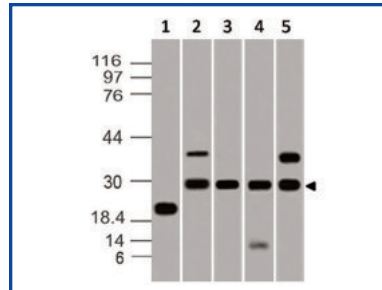
Product Code : 10-7615  
Clone Name : ABM5D50  
Application : FACS, WB  
Reactivity : Human

## Monoclonal Antibody to CD137



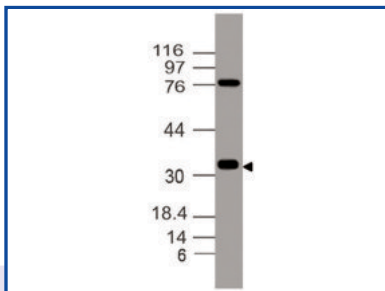
Product Code : 10-7620  
Clone Name : ABM3D3.2E8  
Application : IHC, WB  
Reactivity : Human

## Monoclonal Antibody to PD-L2



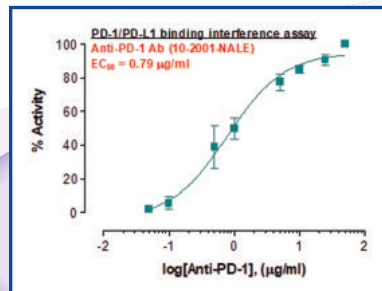
Product Code : 10-7631  
Clone Name : ABM3D6.1G2  
Application : WB  
Reactivity : Human, Mouse

## Monoclonal Antibody to Vista



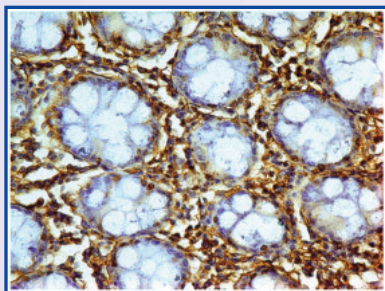
Product Code : 10-7617  
Clone Name : ABM5C53  
Application : WB  
Reactivity : Human

## Rec. hPD-1 rabbit monoclonal Antibody



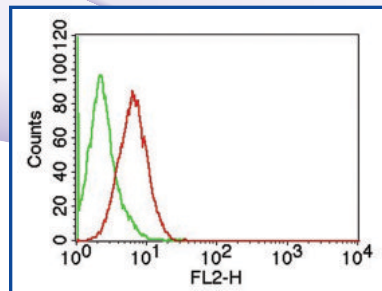
Product Code : 10-2001  
Clone Name : ABMRR01  
Application : FACS, WB  
Reactivity : Human

## Monoclonal Antibody to Galectin-1



Product Code : 10-7618  
Clone Name : ABM5B54  
Application : IHC, FACS, WB  
Reactivity : Human, Mouse

## Monoclonal antibody to CD5L



Product Code : 10-4180  
Clone Name : ABM55F1  
Application : FACS, WB  
Reactivity : Human

## Antibodies

Cat. No.	Product Name	Clone	Isotype	Application	Reactivity
10-4154	B7-2/CD86	BU63	Mouse IgG1, k	FACS	H
10-4172	B7H4	ABM53A6	Mouse IgG2a, k	WB, IHC, FACS	H
10-7620	CD137	ABM3D3.2E8	Mouse IgG1, k	WB, IHC	H
10-4137	CD28	CB28	Mouse IgG1, k	FACS	H
12-1013	CD30	rKi-1/779	Mouse IgG1, k	IHC, FACS, IF	H
10-4180	CD5L	ABM55F1	Mouse IgG2b, k	WB, FACS	H
10-4144	CD70	BU69	Mouse IgG1, k	FACS	H
10-4108	CD80	ABM40G8	Mouse IgG2b, k	WB, FACS	H
10-7633	CTLA-4	ABM2D9.1G3	Rabbit IgG	WB	H
10-7618	Galectin-1	ABM5B54	Mouse IgG2b, k	WB, IHC, FACS	H, M
10-7616	ICOS ligand	ABM5E52	Mouse IgG2b, k	WB	H
10-4134	MHCII/HLA DQ	SPVL3	Mouse IgG2a, k	FACS	H
10-7612	mPD-1	ABM5F42	Rat IgG2b, k	FACS	M
10-7615	MSI1	ABM5D50	Mouse IgG2b, k	WB, FACS	H
10-7613	MSI2	ABM5A48	Mouse IgG2b, k	WB, FACS	H
10-2001	PD-1	ABMRR01	Rabbit IgG	WB, FACS	H
10-7562	PD-L1	ABM4E54	Mouse IgG2a, k	WB, IHC, FACS	H
10-7631	PD-L2	ABM3D6.1G2	Mouse IgG2b, k	WB	H, M
10-7632	PD-L2	ABM7F6.1F6	Mouse IgG2a, k	FACS, IHC	H
10-4076	TIM-3	ABM31A8	Mouse IgG1, k	FACS	H
10-7617	Vista	ABM5C53	Mouse IgG2b, k	WB	H

## ELISA Kits

Cat. No.	Product Name	Description
90-2111	Human PD-1 Pre-Coated ELISA Kit	1X 96 well Format (96 tests)
90-2393	Human PD-L1 Pre-Coated ELISA Kit	1X 96 well Format (96 tests)
90-2319	Mouse PD-L1 Pre-Coated ELISA Kit	1X 96 well Format (96 tests)

## Stable Cell Lines

Cat. No.	Product Name	Host	Description
14-500ACL	PD-1 Stable Cell Line	CHO-K1	Human Programmed Cell Death Protein -1 (PD-1/ CD279).
14-501ACL	PD-L1 Stable Cell Line	CHO-K1	Human Programmed Death- Ligand 1 (PD-L1/ CD275/ B7-H1).
14-502ACL	PD-L2 Stable Cell Line	CHO-K1	Human Programmed Death- Ligand 2 (PD-L2/ B7-DC/ CD273).
14-503ACL	ICOS Stable Cell Line	CHO-K1	Human Inducible T-Cell Costimulator (ICOS/ CD278).
14-504ACL	ICOSL Stable Cell Line	CHO-K1	Human ICOS Ligand (ICOSL/ B7-H2/ B7RP-1/ CD275).
14-505ACL	CD80 Stable Cell Line	CHO-K1	Human Cluster of Differentiation 80 (CD80/ B7-1).
14-506ACL	CTLA-4 Stable Cell Line	CHO-K1	Human Cytotoxic T-Lymphocyte-Associated Protein 4 (CTLA4/ CD152).
14-507ACL	hB7-H4 Stable Cell Line	CHO-K1	Human B7-H4/ VTCN1.
14-508ACL	mB7-H4 Stable Cell Line	CHO-K1	Mouse B7-H4/ VTCN1.
14-509ACL	Langerin Stable Cell Line	CHO-K1	Human Langerin CD207.

## Product Categories

- Antibodies
- Stable Cell Lines
- ELISA Kits



**Releasing Soon  
CAR-T  
Reagents**

### Contact Us

9853 Pacific Heights Blvd. Suite D.  
San Diego, CA 92121 USA  
Tel: +1-858-263-4982 | Fax: +1-858-205-1192  
Email: [support@abeomics.com](mailto:support@abeomics.com)  
[www.abeomics.com](http://www.abeomics.com)

☎ +1-858-263-4982

✉ [support@abeomics.com](mailto:support@abeomics.com)