

# Apoptosis and Cancer Markers

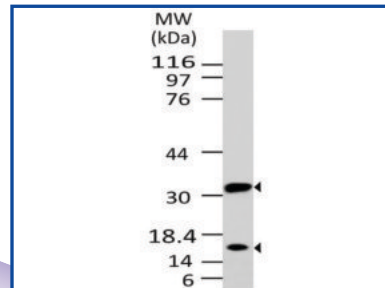
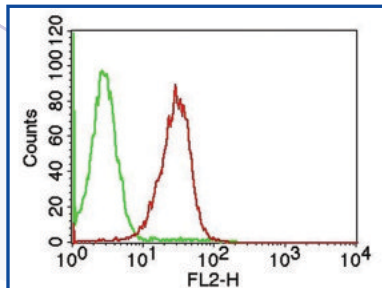
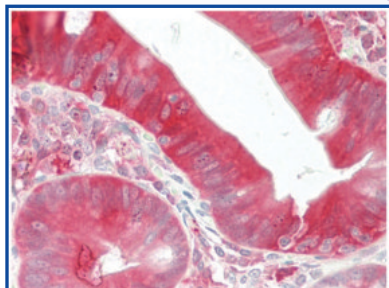
### Monoclonal Antibody to Caspase-3 (Pro and Active)

Product Code : 10-1003

Clone Name : ABM1C12

Application : IHC, FACS, WB

Reactivity : Human



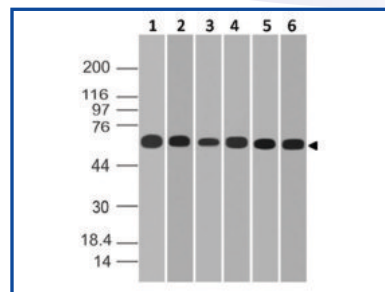
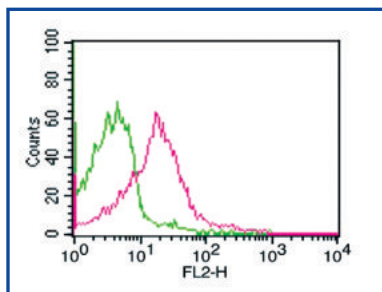
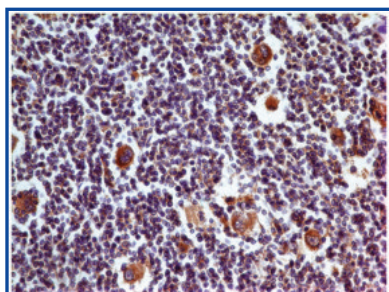
### Monoclonal Antibody to hPD-L1

Product Code : 10-7562

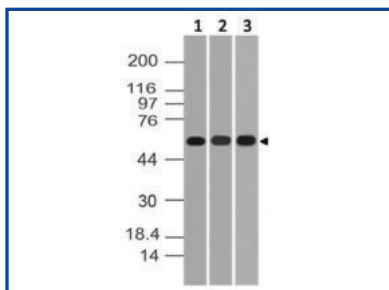
Clone Name : ABM4E54

Application : IHC, FACS, WB

Reactivity : Human



### Monoclonal Antibody to AKT1



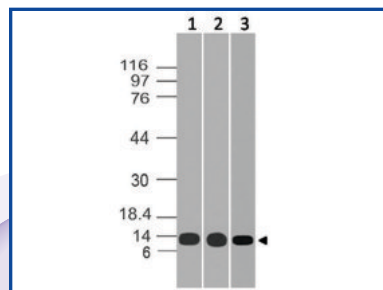
Product Code : 10-1010

Clone Name : ABM12F7

Application : WB

Reactivity : Human

### Monoclonal antibody to Cytochrome C



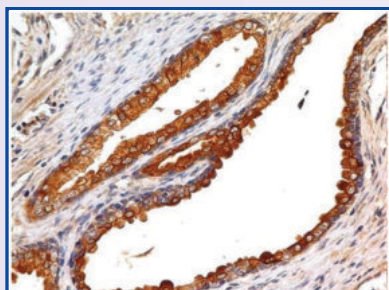
Product Code : 10-1050

Clone Name : ABM30B3

Application : FACS, WB

Reactivity : Human, Mouse, Rat

### Monoclonal Antibody to EpCAM



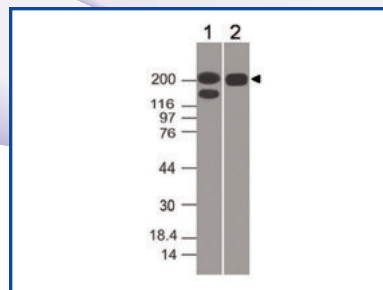
Product Code : 10-7503

Clone Name : ABM2C92

Application : IHC, WB

Reactivity : Human

### Monoclonal Antibody to Spectrin $\beta$ 3



Product Code : 10-7590

Clone Name : ABM5A16

Application : FACS, WB

Reactivity : Human

## Antibodies

Cat. No.	Antigen	Clone	Isotype	Clonality	Application	Reactivity
10-1058	14-3-3 Theta	ABM52H6	Rat IgG2a, k	Monoclonal	WB	M
10-1007	A-20/TNFAIP3	ABM1G20	Mouse IgG1, k	Monoclonal	WB	H
36-3004	ACTH	AH26	Mouse IgG1, k	Monoclonal	IHC	H
10-7597	Adiponectin	ABM52A3	Mouse IgG2b, k	Monoclonal	WB	H
10-7576	Adipophilin	ABM4A83	Mouse IgG2b, k	Monoclonal	WB	H
10-1010	AKT1	ABM12F7	Mouse IgG1, k	Monoclonal	WB	H
10-7595	ALDH1A1	ABM5F21	Mouse IgG2a, k	Monoclonal	WB	H
10-7542	ALK-1	ABM43C4	Mouse IgG1, k	Monoclonal	IHC, WB	H
10-7579	Antitrypsin	ABM48F6	Mouse IgG2a, k	Monoclonal	WB	H
10-1041	APIP	ABM19C7	Mouse IgG2b, k	Monoclonal	WB, FACS	H
10-7543	Arginase-1	ABM4B35	Mouse IgG2b, k	Monoclonal	IHC, WB	H
10-1032	ATF2	ABM16E7	Mouse IgG1, k	Monoclonal	WB	H, M
10-1018	ATF6	ABM1A40	Mouse IgG1, k	Monoclonal	WB, FACS	H
10-1052	Bcl-2	BC1	Mouse IgG1, k	Monoclonal	IHC, WB	H
10-7557	BCL-6	ABM44G9	Mouse IgG2b, k	Monoclonal	WB	H
10-1044	Bi-1	ABM20E4	Mouse IgG2a, k	Monoclonal	WB	H
10-1040	Caspase-1	ABM1B93	Mouse IgG1, k	Monoclonal	WB	H, M
10-1009	Caspase-14	ABM1B24	Mouse IgG1, k	Monoclonal	FACS	H
10-1004	Caspase-3	ABM11D3	Mouse IgG1	Monoclonal	IHC, WB, FACS	H
10-1003	Caspase-3 (Pro and Active)	ABM1C12	Mouse IgG1, k	Monoclonal	IHC, WB, FACS	H
10-1003-F	Caspase-3 (Pro and Active)	ABM1C12	Mouse IgG1, k	Monoclonal	FACS	H
10-1019	Caspase-8	ABM14C1	Mouse IgG1	Monoclonal	IHC, WB, FACS	H, M
10-1019-F	Caspase-8	ABM14C1	Mouse IgG1	Monoclonal	FACS	H
10-7560	CD10	ABM4A52	Mouse IgG2b, k	Monoclonal	IHC, WB, FACS	H
10-7566	CD11c	ABM4C58	Mouse IgG2b, k	Monoclonal	IHC, FACS	H
10-7620	CD137	ABM3D3.2E8	Mouse IgG1, k	Monoclonal	IHC, WB	H
10-7529	CD31	PECAM-1	Mouse IgG1, k	Monoclonal	IHC, FACS	H
10-7529-F	CD31	PECAM-1	Mouse IgG1, k	Monoclonal	FACS	H
36-3005	CD31	C31.7	Mouse IgG1, k	Monoclonal	IHC, WB	H
36-3010	CD34	ICO-115	Mouse IgG1, k	Monoclonal	FACS	H
10-7561	CD3e	ABM45B3	Mouse IgG2b, k	Monoclonal	IHC, WB	H
36-3009	CD43	DF-T1	Mouse IgG1, k	Monoclonal	IHC, FACS	H
10-7516	CD44	156-3C11	Mouse IgG2a, k	Monoclonal	IHC, WB, FACS	H
10-7516-F	CD44	156-3C11	Mouse IgG2a, k	Monoclonal	FACS	H
36-3014	CD45RA	158-4D3	Mouse IgG2a, k	Monoclonal	IHC, FACS	H
10-7504	CD56	123C3	Mouse IgG1, k	Monoclonal	IHC, FACS	H
36-3035	CD74w	LN-2	Mouse IgG1, k	Monoclonal	IHC	H
10-7554	CDC25A	ABM4A46	Mouse IgG2b, k	Monoclonal	IHC, WB	H
10-7563	c-erbB-2/Her2	ABM45F5	Mouse IgG2b, k	Monoclonal	IHC	H
36-3018	CK18	DC10	Mouse IgG1, k	Monoclonal	IHC, WB	H
36-3003	CK19	A53-B/A2	Mouse IgG2a, k	Monoclonal	IHC, WB	H
10-7598	CLIP	ABM52H4	Mouse IgG1, k	Monoclonal	WB	H
10-1016	CREB	ABM13H8	Mouse IgG1	Monoclonal	FACS	H
10-7574	Cyclin D1	ABM47F5	Mouse IgG2a, k	Monoclonal	IHC	H

## Antibodies

Cat. No.	Antigen	Clone	Isotype	Clonality	Application	Reactivity
10-1050	Cytochrome C	ABM30B3	Mouse IgG2b, k	Monoclonal	WB, FACS	H, M, R
10-1051	Cytochrome C	ABM30D4	Mouse IgG1, k	Monoclonal	WB	H, M, R
10-1006	D4-GDI	ABM11F9	Mouse IgG2b, k	Monoclonal	WB, FACS	H
10-7539	Desmoglein 3	ABM4A31	Mouse IgG2b, k	Monoclonal	IHC	H
10-6008	DFP-40	ABM1H15	Mouse IgG1	Monoclonal	WB, FACS	H, M
10-7002	Dnmt1	ABM13B2	Mouse IgG1, k	Monoclonal	IHC, WB, FACS	H, M
10-7010	DNMT2	ABM1H70	Mouse IgG1, k	Monoclonal	WB, FACS	H, M
10-7003	DNMT3a	ABM13G4	Mouse IgG1, k	Monoclonal	WB, FACS	H
10-7003-F	DNMT3a	ABM13G4	Mouse IgG1, k	Monoclonal	FACS	H
10-7004	Dnmt3a	ABM1F35	Mouse IgG1, k	Monoclonal	WB	H
10-7004-F	Dnmt3a	ABM1F35	Mouse IgG1, k	Monoclonal	FACS	H
10-7001	DNMT3B	ABM1C25	Mouse IgG1, k	Monoclonal	WB	H
10-1002	DR4	ABM1B11	Mouse IgG1, k	Monoclonal	WB, FACS	H
10-1002-F	DR4	ABM1B11	Mouse IgG1, k	Monoclonal	FACS	H
10-7546	E-cadherin	ABM43F8	Mouse IgG1, k	Monoclonal	IHC, WB	H
10-7570	Endoglin	ABM46D3	Mouse IgG1, k	Monoclonal	WB	H
10-7503	EpCAM	ABM2C92	Mouse IgG2b, k	Monoclonal	IHC, WB	H
10-7611	EpCAM	ABM53D8	Rabbit IgG	Monoclonal	WB	H
10-7578	EpCAM	ABM4D85	Mouse IgG2a, k	Monoclonal	WB	H
36-3012	EpCAM	VU-1D9	Mouse IgG1, k	Monoclonal	IHC, FACS	H
10-7564	FLT1	ABM4A56	Mouse IgG2b, k	Monoclonal	IHC	H
10-1022	FosB	ABM14H4	Mouse IgG1	Monoclonal	WB	H, M
10-7600	FSH Receptor	ABM5D29	Mouse IgG1, k	Monoclonal	WB, FACS	H
10-7550	Galectin 13	ABM4E42	Mouse IgG2b, k	Monoclonal	IHC, WB	H
10-7618	Galectin-1	ABM5B54	Mouse IgG2b, k	Monoclonal	IHC, WB, FACS	H, M
10-7619	Galectin-1	ABM55A5	Mouse IgG2b, k	Monoclonal	WB, FACS	H, M
36-3016	Gastric Mucin	45M1	Mouse IgG1, k	Monoclonal	IHC, FACS	H
10-7548	Glut-1	ABM4G40	Mouse IgG2b, k	Monoclonal	IHC, WB, FACS	H
10-7544	HGAL	ABM43E6	Mouse IgG1, k	Monoclonal	IHC	H
10-1038	HtrA2	ABM1H83	Mouse IgG1, k	Monoclonal	WB	H
10-7616	ICOS ligand	ABM5E52	Mouse IgG2b, k	Monoclonal	WB	H
10-7551	IDH1	ABM44B3	Mouse IgG2a, k	Monoclonal	IHC	H
10-6003	IkB alpha	ABM10F4	Mouse IgG1, k	Monoclonal	WB, FACS	H
10-6010	IkB alpha	ABM11B7	Mouse IgG1, k	Monoclonal	FACS	H
10-6007	IKK alpha	ABM10G9	Mouse IgG1, k	Monoclonal	WB, FACS	H, M
10-6017	Ikk Gamma	ABM15D9	Mouse IgG1, k	Monoclonal	WB	H
10-6005	IKKb	ABM10E6	Mouse IgG1, k	Monoclonal	WB	H
10-6015	Ikkε/Ikkι/TBK1	ABM13C7	Mouse IgG2a, k	Monoclonal	IHC, WB	H, M
10-7553	Inhibin alpha	ABM44F5	Mouse IgG2b, k	Monoclonal	WB, IHC	H
36-3015	Insulin	2D11-H5	Mouse IgG1, k	Monoclonal	IHC	H
36-3011	Kappa	L1C1	Mouse IgG1, k	Monoclonal	IHC	H
10-6019	kB-Ras1	ABM17B5	Mouse IgG1, k	Monoclonal	WB	H
10-7592	KRT76	ABM51A8	Mouse IgG2a, λ	Monoclonal	WB	H
10-7596	KRT77	ABM5G22	Mouse IgG2b, k	Monoclonal	WB	H

## Antibodies

Cat. No.	Antigen	Clone	Isotype	Clonality	Application	Reactivity
10-7007	MBD1	ABM15H2	Mouse IgG1, k	Monoclonal	IHC, WB, FACS	H
10-7007-F	MBD1	ABM15H2	Mouse IgG1, k	Monoclonal	FACS	H
10-7006	MBD2/MBD3	ABM14A8	Mouse IgG1, k	Monoclonal	IHC, WB, FACS	H
10-7573	MLH1	ABM4D74	Mouse IgG2b	Monoclonal	IHC	H
10-7011	MLH1	ABM17C1	Mouse IgG1, k	Monoclonal	WB, FACS	H
10-7601	MMP2	ABM5A31	Mouse IgG1, k	Monoclonal	WB	H
10-1057	mNoxa	ABM46B8	Rat IgG2b, k	Monoclonal	WB	H
10-7612	mPD-1	ABM5F42	Rat IgG2b, k	Monoclonal	FACS	M
10-7614	MSI1	ABM54B9	Mouse IgG2b, k	Monoclonal	WB, FACS	H
10-7615	MSI1	ABM5D50	Mouse IgG2b, k	Monoclonal	WB, FACS	H
10-7613	MSI2	ABM5A48	Mouse IgG2b, k	Monoclonal	WB, FACS	H
10-7568	Napsin	ABM4H60	Mouse IgG1, k	Monoclonal	WB, IHC	H
10-7594	NDRG1	ABM51C9	Mouse IgG1, k	Monoclonal	WB	H
10-1031	NOXA	ABM16G6	Mouse IgG1, k	Monoclonal	WB, FACS	H
10-7593	NSE Gamma	ABM5D20	Mouse IgG2b, k	Monoclonal	WB	H
10-6001	OPG	ABM10D2	Mouse IgG1, k	Monoclonal	WB, FACS	H
10-6021	p105/p50	ABM20H5	Mouse IgG1, k	Monoclonal	WB	H
36-3023	p21	WA-1	Mouse IgG1, k	Monoclonal	IHC	H
10-6009	P65	ABM1A16	Mouse IgG1, k	Monoclonal	FACS	H
10-1011	p73	ABM1G28	Mouse IgG1, k	Monoclonal	WB	H
10-1014	p73	ABM13D1	Mouse IgG1, k	Monoclonal	WB	H
10-1025	p73	ABM15G3	Mouse IgG1, k	Monoclonal	WB, FACS	H
10-7569	PAPP-A	ABM4C62	Mouse IgG2b, k	Monoclonal	IHC	H
10-7552	Parathyroid Hormone	ABM4D44	Mouse IgG2b, k	Monoclonal	IHC, WB	H
10-7603	PAX8	ABM5F33	Mouse IgG2b, k	Monoclonal	WB, FACS	H
10-2001	PD-1	ABMRR01	Rabbit IgG	Monoclonal	WB, FACS	H
10-2001-F	PD-1	ABMRR01	Rabbit IgG	Monoclonal	FACS	H
10-2001-NALE	PD-1	ABMRR01	Rabbit IgG	Monoclonal	FA, WB, FACS	H
10-7562	PDL1	ABM4E54	Mouse IgG2a, k	Monoclonal	IHC, WB, FACS	H
10-7562-F	PDL1	ABM4E54	Mouse IgG2a, k	Monoclonal	FACS	H
10-7562-P	PDL1	ABM4E54	Mouse IgG2a, k	Monoclonal	FACS	H
10-7562-NALE	PDL1	ABM4E54	Mouse IgG2a, k	Monoclonal	IHC, WB, FACS	H
10-7599	PDL-1	ABM5F25	Mouse IgG2b, k	Monoclonal	IHC, WB, FACS	H
10-7599-F	PDL-1	ABM5F25	Mouse IgG2b, k	Monoclonal	FACS	H
10-7599-NALE	PDL-1	ABM5F25	Mouse IgG2b, k	Monoclonal	IHC, WB, FACS	H
10-7012	PMS2	ABM17G4	mouse IgG1	Monoclonal	WB	H
36-3031	Progesterone Receptor	C-80	Mouse IgG1, k	Monoclonal	IHC	H
10-6004	RANK	ABM10D5	Mouse IgG1, k	Monoclonal	IHC, WB	H, M
10-6006	RANKL	ABM10A7	Mouse IgG1, k	Monoclonal	WB, FACS	H, M
10-6014	RANKL	ABM12D6	Mouse IgG1, k	Monoclonal	WB, FACS	H
10-1017	Rap1	ABM13D9	Mouse IgG1	Monoclonal	WB, FACS	H
10-1035	RB1	ABM17H9	Mouse IgG1	Monoclonal	WB	H
36-3024	Renal Cell Carcinoma	66.4.C2	Mouse IgG2b, k	Monoclonal	IHC	H
10-7582	S100A4	ABM48F7	Mouse IgG2b, k	Monoclonal	WB	H

## Antibodies

Cat. No.	Antigen	Clone	Isotype	Clonality	Application	Reactivity
10-7567	SOX11	ABM45D9	Mouse IgG2b, k	Monoclonal	WB	H
10-7590	Spectrin beta 3	ABM5A16	Mouse IgG2a, k	Monoclonal	WB, FACS	H
36-3002	Thyroglobulin	2H11	Mouse IgG1, k	Monoclonal	IHC	H
10-7572	TIA-1	ABM47E1	Mouse IgG1	Monoclonal	WB, IHC	H
10-7577	Topo II alpha	ABM48B4	Mouse IgG2b, k	Monoclonal	WB, FACS	H, M
10-7549	TOX-3	ABM44A1	Mouse IgG1, k	Monoclonal	IHC, WB	H
10-6013	TRAF5	ABM12A2	Mouse IgG1, k	Monoclonal	WB	H
10-1012	TRAIL	ABM1B29	Mouse IgG1, k	Monoclonal	WB	H
10-6002	TRF2	ABM10H3	Mouse IgG1, k	Monoclonal	IHC, WB	H
10-7540	Trim29	ABM43D2	Mouse IgG2b, k	Monoclonal	IHC, WB	H
36-3025	UchL1	31A3	Mouse IgG1, k	Monoclonal	IHC, WB	H, M, R
10-7580	VEGFR-2	ABM4A88	Mouse IgG1, k	Monoclonal	IHC	H
10-7571	Villin	ABM4E64	Mouse IgG2b, k	Monoclonal	IHC, WB	H
10-7617	Vista	ABM5C53	Mouse IgG2b, k	Monoclonal	WB	H
10-7602	VWF	ABM53D2	Mouse IgG1, k	Monoclonal	WB, FACS	H
11-1023	14 -3 -3		Rabbit IgG	Polyclonal	WB	H
11-1020	14-3-3 sigma		Rabbit IgG	Polyclonal	IHC, WB	H
11-1017	14-3-3 Zeta		Rabbit IgG	Polyclonal	WB	H
20-1113	AIF		Rabbit IgG	Polyclonal	WB, IHC, IP	Cw, D, H, M, R
11-7549	ALDH1A1		Rabbit IgG	Polyclonal	WB	H
11-7528	ALK1		Rabbit IgG	Polyclonal	WB	H
11-7556	Antichymotrypsin		Rabbit IgG	Polyclonal	WB	H
20-1004	APAF-1		Rabbit IgG	Polyclonal	IP, IHC, WB	H, M, R
11-1005	APG4B		Rabbit IgG	Polyclonal	WB	H
11-7536	Arginase		Rabbit IgG	Polyclonal	IHC, WB	H
20-1005	ASC/TMS1		Rabbit IgG	Polyclonal	WB	H
20-1006	ASC2 (ASC-2/POP)		Rabbit IgG	Polyclonal	IP, IHC, WB	H, M, R
20-1007	ASK1		Rabbit IgG	Polyclonal	IP, IHC, WB	H
11-7575	B7-H4 mouse		Rabbit IgG	Polyclonal	WB	M
20-1009	Bad		Rabbit IgG	Polyclonal	IP, IHC, WB	R, M
20-1008	Bad		Rabbit IgG	Polyclonal	IP, IHC, WB	H
20-1011	Bag-1		Rabbit IgG	Polyclonal	WB, IHC, IP	D, H, M, R
20-1017	BAG2		Rabbit IgG	Polyclonal	WB, IHC, IP	H
20-1118	BAG3		Rabbit IgG	Polyclonal	WB, IHC, IP	H, M
20-1018	BAG5		Rabbit IgG	Polyclonal	WB, IHC, IP, IF/ICC	Cw, D, H, M, R
20-1019	BAK		Rabbit IgG	Polyclonal	IP, IHC, WB	M, H
20-1023	Bax		Rabbit IgG	Polyclonal	IP, IHC, WB	R, M
20-1022	Bax		Rabbit IgG	Polyclonal	IP, IHC, WB	M, H
20-1028	Bcl-2		Rabbit IgG	Polyclonal	WB, IHC, IP	D, G, M, R
20-1001	Bcl-2 related protein A1		Rabbit IgG	Polyclonal	WB, IHC, IP	G, M, R
11-7526	BCL6		Rabbit IgG	Polyclonal	WB	H
20-1030	Bcl-xL		Rabbit IgG	Polyclonal	WB, IHC, IP	D, G, H, M, R
20-1020	BFAR (BAR)		Rabbit IgG	Polyclonal	IP, IHC, WB	H
20-1034	BID		Rabbit IgG	Polyclonal	WB, IHC, IP	D, H, M, R

## Antibodies

Cat. No.	Antigen	Clone	Isotype	Clonality	Application	Reactivity
20-1036	BIK		Rabbit IgG	Polyclonal	WB,IHC,IP	G, H, M, R
20-1074	BNIP3		Rabbit IgG	Polyclonal	WB,IHC,IP	Ch, H, M, R, Xenopus
11-7501	BRD4, HUNK1		Rabbit IgG	Polyclonal	WB	H
11-7542	Cadherin-17		Rabbit IgG	Polyclonal	WB	H
11-7541	Calretinin		Rabbit IgG	Polyclonal	WB	H
20-1066	CARD12 (IPAF/CIAN)		Rabbit IgG	Polyclonal	WB,IHC,IP	H, M
20-1038	CARD6 (CARD2)		Rabbit IgG	Polyclonal	WB	H
20-1105	CARD8 (Tucan)		Rabbit IgG	Polyclonal	WB,IHC,IP	H
20-1043	Caspase 8 (active/cleaved)		Rabbit IgG	Polyclonal	WB,IHC,IP	D, G, H, M, R
20-1049	Caspase-10/FLICE2		Rabbit IgG	Polyclonal	IP,IHC,WB	D, R, M, H
11-1016	Caspase-12		Rabbit IgG	Polyclonal	WB	H
20-1052	Caspase-14		Rabbit IgG	Polyclonal	WB,IHC,IP	D, H, M, R
20-1040	Caspase-3 (active/cleaved)		Rabbit IgG	Polyclonal	WB,IHC,IP	D, G, H, M, R
20-1039	Caspase-3 (Pro and Active)		Rabbit IgG	Polyclonal	IP,IHC,WB	D, R, M, H
20-1041	Caspase-6		Rabbit IgG	Polyclonal	IP,IHC,WB	D, R, M, H
20-1042	Caspase-7 (active/cleaved)		Rabbit IgG	Polyclonal	IP,IHC,WB	H, M, R
20-1111	Caspase-8		Rabbit IgG	Polyclonal	IP,IHC,WB	H, M, R
20-1044	Caspase-9		Rabbit IgG	Polyclonal	WB,IHC,IP	D, G, H, M, R
11-1046	Catalase		Rabbit IgG	Polyclonal	WB	M, H
11-7540	CD10		Rabbit IgG	Polyclonal	WB	H
11-7547	CD11C		Rabbit IgG	Polyclonal	WB	H
11-7576	CD141		Rabbit IgG	Polyclonal	WB	H
11-7546	CD3e		Rabbit IgG	Polyclonal	WB	H
20-1053	CD40/TNFRSF5		Rabbit IgG	Polyclonal	WB,IHC,IP	D, G, H, M, R
11-7533	CDC25a		Rabbit IgG	Polyclonal	WB	H
11-7544	CELA3B		Rabbit IgG	Polyclonal	WB	H
20-1114	cIAP-1/HAIP-2		Rabbit IgG	Polyclonal	WB,IHC,IP	D, G, H, M, R
11-1044	CIDE-B		Rabbit IgG	Polyclonal	WB	H
11-7567	CLIP		Rabbit IgG	Polyclonal	WB	H
20-1112	Cre		Rabbit IgG	Polyclonal	WB,IHC,IP	Cre/lox Systems
11-1003	CYP1B1		Rabbit IgG	Polyclonal	WB	H
20-1060	Daxx		Rabbit IgG	Polyclonal	IP,IHC,WB	D, R, H
11-7031	DDB1		Rabbit IgG	Polyclonal	WB	H
20-1062	DEDD2 ( DED2/Flame-3 )		Rabbit IgG	Polyclonal	IP,IHC,WB	H
20-1061	DEDD2 (DED4)		Rabbit IgG	Polyclonal	WB	D, R, M, H
11-1021	DEPTOR/DEPDC6		Rabbit IgG	Polyclonal	WB	H
11-1043	Diablo		Rabbit IgG	Polyclonal	WB	H, R, M
11-7503	DKK1		Rabbit IgG	Polyclonal	WB	H
11-7005	DMAP1		Rabbit IgG	Polyclonal	WB	H
11-7014	Dnmt3L		Rabbit IgG	Polyclonal	WB	M
11-7545	E Cadherin		Rabbit IgG	Polyclonal	WB	H
11-7033	eIF3A		Rabbit IgG	Polyclonal	WB	H
11-7038	eIF4B		Rabbit IgG	Polyclonal	WB	H
11-7508	EpCAM-cyt		Rabbit IgG	Polyclonal	IHC,WB	H

## Antibodies

Cat. No.	Antigen	Clone	Isotype	Clonality	Application	Reactivity
11-7566	EpCAM-ext		Rabbit IgG	Polyclonal	WB	H
11-7584	Erythropoietin		Rabbit IgG	Polyclonal	WB	H
11-7577	Estrogen Receptor alpha		Rabbit IgG	Polyclonal	WB	H
11-7583	FABP5		Rabbit IgG	Polyclonal	WB	H
11-7574	Ferritin, heavy chain		Rabbit IgG	Polyclonal	WB	H
11-7580	Filaggrin-1		Rabbit IgG	Polyclonal	WB	H
20-1065	FLIP		Rabbit IgG	Polyclonal	IP, IHC, WB	H
11-7008	Furin		Rabbit IgG	Polyclonal	WB	H
11-7570	GAD65		Rabbit IgG	Polyclonal	WB	H
11-7530	Glut1		Rabbit IgG	Polyclonal	WB	H
11-7532	Granzyme B		Rabbit IgG	Polyclonal	IHC, WB	H
11-7502	GRP94		Rabbit IgG	Polyclonal	WB	H
11-7035	HDAC11		Rabbit IgG	Polyclonal	WB	M, H
11-7565	HER2		Rabbit IgG	Polyclonal	WB	H
11-7537	HGAL		Rabbit IgG	Polyclonal	IHC, WB	H
11-7017	Histone H2A		Rabbit IgG	Polyclonal	IHC, WB	H
11-7010	Histone H2A.x		Rabbit IgG	Polyclonal	WB	H
11-7007	Histone H3.3		Rabbit IgG	Polyclonal	IHC, WB	H, M
11-7016	HMG1/HMG14		Rabbit IgG	Polyclonal	IHC	H
11-1018	hnRNPK		Rabbit IgG	Polyclonal	WB	H
11-7002	ICAD		Rabbit IgG	Polyclonal	WB	M
11-7527	IDH1		Rabbit IgG	Polyclonal	WB	H
11-7550	INI-1/SNF5		Rabbit IgG	Polyclonal	WB	H
20-1068	ITRAF		Rabbit IgG	Polyclonal	IP, IHC, WB	H
11-7040	JMJD6		Rabbit IgG	Polyclonal	WB	M,H
11-1042	LC3 A		Rabbit IgG	Polyclonal	WB	H
11-7505	Leucine rich alpha2 gp1		Rabbit IgG	Polyclonal	WB	H
20-1069	Livin (KIAP)		Rabbit IgG	Polyclonal	IP, IHC, WB	H, M, R
11-7004	LSD1		Rabbit IgG	Polyclonal	IHC, WB	H, M
20-1081	MALT-1 (Paracaspase)		Rabbit IgG	Polyclonal	IP, IHC, WB	H
20-1070	Mcl-1		Rabbit IgG	Polyclonal	WB, IHC, IP, IF/ICC	H
11-7571	MCM7		Rabbit IgG	Polyclonal	WB	H
11-7587	MSH2		Rabbit IgG	Polyclonal	WB	H
11-1045	MST1		Rabbit IgG	Polyclonal	WB	H
11-7037	MTA2		Rabbit IgG	Polyclonal	WB	M, H
11-7573	MTAP		Rabbit IgG	Polyclonal	WB	H
11-7579	MUC4		Rabbit IgG	Polyclonal	WB	H
11-7551	MUM1		Rabbit IgG	Polyclonal	WB	H
20-1079	NALP4 (PAN-2)		Rabbit IgG	Polyclonal	IP, IHC, WB	H
20-1073	NIDD/ZDHHC23		Rabbit IgG	Polyclonal	WB	H
11-7578	NKX2.2		Rabbit IgG	Polyclonal	WB	H
20-1071	NLRP1/NALP1 (NAC-alpha)		Rabbit IgG	Polyclonal	IP, IHC, WB	H
20-1072	NLRP1/NALP1 (NAC-delta)		Rabbit IgG	Polyclonal	IP, IHC, WB	H
20-1077	NLRP2/NALP2 (PAN1)		Rabbit IgG	Polyclonal	WB, IHC, IP	H



## Antibodies

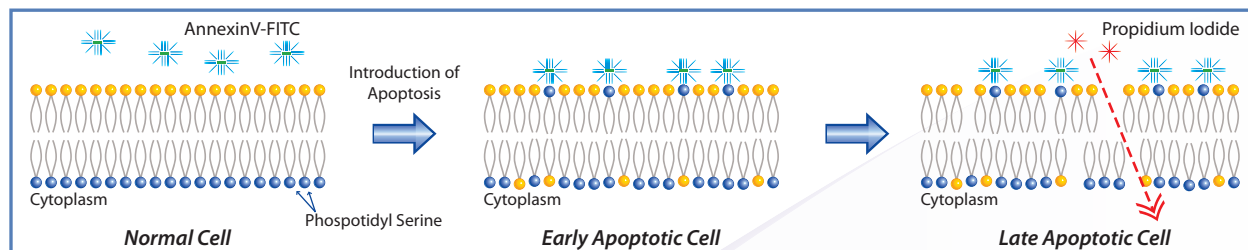
Cat. No.	Antigen	Clone	Isotype	Clonality	Application	Reactivity
20-1078	NLRP2/NALP2 (PAN1)		Rabbit IgG	Polyclonal	WB, IHC, IP	H
20-1075	NOD1		Rabbit IgG	Polyclonal	WB, IHC, IP	H
20-1115	NOD2 (Card15)		Rabbit IgG	Polyclonal	WB, IHC, IP	H
11-7569	NSE gamma		Rabbit IgG	Polyclonal	WB	H
11-7588	Olfactomedin-4		Rabbit IgG	Polyclonal	WB	H
20-1076	p35 baculovirus		Rabbit IgG	Polyclonal	IHC, WB	H, M, R
11-7525	p63		Rabbit IgG	Polyclonal	WB	H
11-7529	PAX2		Rabbit IgG	Polyclonal	WB	H
11-7531	PAX5		Rabbit IgG	Polyclonal	WB	H
11-7543	PD-L1		Rabbit IgG	Polyclonal	WB	H
11-7032	PRDM5		Rabbit IgG	Polyclonal	WB	H
11-7018	PRMT7		Rabbit IgG	Polyclonal	WB	H, M
11-7539	PTEN		Rabbit IgG	Polyclonal	IHC, WB	H
20-1063	PTPN13/PTPL1 (FAP1)		Rabbit IgG	Polyclonal	IP, IHC, WB	H
20-1083	RIP1/TANK		Rabbit IgG	Polyclonal	IP, IHC, WB	H
20-1085	Semenogelin II		Rabbit IgG	Polyclonal	IP, IHC, WB	H, M, R
11-7036	SETD7		Rabbit IgG	Polyclonal	WB	H
20-1089	SMAC/Diablo		Rabbit IgG	Polyclonal	IP, IHC, WB	H, M, R
11-7581	SMAD4		Rabbit IgG	Polyclonal	WB	H
11-1047	SOD		Rabbit IgG	Polyclonal	WB	M, H
20-1116	SODD/BAG4		Rabbit IgG	Polyclonal	IP, IHC, WB	H
11-7554	SOX2		Rabbit IgG	Polyclonal	WB	H
11-7512	SPARC/Osteonectin		Rabbit IgG	Polyclonal	WB	H
11-1006	Survivin		Rabbit IgG	Polyclonal	WB	H
20-1091	Survivin		Rabbit IgG	Polyclonal	IP, IHC, WB	H, M, R
11-7586	TIMP1		Rabbit IgG	Polyclonal	WB	H
11-1022	Tnfaip2		Rabbit IgG	Polyclonal	WB	H
11-7548	Topo II alpha		Rabbit IgG	Polyclonal	WB	H
20-1093	TRAF-1		Rabbit IgG	Polyclonal	IP, IHC, WB	H
20-1094	TRAF-1		Rabbit IgG	Polyclonal	IP, IHC, WB	M
20-1097	TRAF-2		Rabbit IgG	Polyclonal	WB, IHC, IP	M
20-1096	TRAF-2		Rabbit IgG	Polyclonal	WB, IHC, IP	H
20-1095	TRAF-2		Rabbit IgG	Polyclonal	WB, IHC, IP	H, M, R
20-1099	TRAF-3		Rabbit IgG	Polyclonal	WB, IHC, IP	G, H, M, R
20-1100	TRAF-4		Rabbit IgG	Polyclonal	IP, IHC, WB	H, M, R
20-1101	TRAF-5		Rabbit IgG	Polyclonal	IP, IHC, WB	H, M, R
20-1102	TRAF-6		Rabbit IgG	Polyclonal	IP, IHC, WB	H, M, R
20-1103	TRAIIP (TRIP)		Rabbit IgG	Polyclonal	IP, IHC, WB	H
11-1024	TRAM		Rabbit IgG	Polyclonal	WB	H
11-7535	Trim29		Rabbit IgG	Polyclonal	IHC, WB	H
11-7538	TTF1		Rabbit IgG	Polyclonal	WB	H
11-7568	Villin1		Rabbit IgG	Polyclonal	WB	H
11-7555	Vimentin		Rabbit IgG	Polyclonal	WB	H
20-1106	XIAP		Rabbit IgG	Polyclonal	WB, IHC, IP	G, H, M, R

## Apoptosis Inhibitors

Cat. No.	Product Name
15-2001	Caspase Inhibitors Z-VAD (OMe)-FMK
15-2002	Caspase Inhibitors Q-VD-OPH (Pan Caspase Inhibitor)
15-2003	Caspase Inhibitors Z-D (OMe) E (OMe) VD (OMe)-FMK (Caspase 3, 7 Inhibitor)
15-2005	Caspase Inhibitors Z-IE (OMe) TD (OMe)-FMK (Caspase 8 Inhibitor)
15-2006	Caspase Inhibitors Z-LE (OMe) HD (OMe)-FMK (Caspase 9 Inhibitor)

## Tissue Microarray

Cat. No.	Product Name	Application	Content
16-2002	Normal Organs in duplicates	IHC, FISH, Tunnel Assay	1 Slide
16-2003	Normal organs from non-cancer patients	IHC, FISH, Tunnel Assay	1 Slide
16-2005	Various cancers	IHC, FISH, Tunnel Assay	1 Slide
16-2008	Breast cancer-metastasis-normal	IHC, FISH, Tunnel Assay	1 Slide
16-2010	Lung cancer	IHC, FISH, Tunnel Assay	1 Slide
16-2011	Lung cancer-metastasis-normal	IHC, FISH, Tunnel Assay	1 Slide
16-2012	Normal lung (matching Lung cancer)	IHC, FISH, Tunnel Assay	1 Slide
16-2013	Colon and rectum cancer	IHC, FISH, Tunnel Assay	1 Slide
16-2014	Colorectal cancer-metastasis-normal	IHC, FISH, Tunnel Assay	1 Slide
16-2015	Normal Colon and rectum (matching 16-2013)	IHC, FISH, Tunnel Assay	1 Slide
16-2016	Larynx and pharynx cancer	IHC, FISH, Tunnel Assay	1 Slide
16-2017	Ovary cancer	IHC, FISH, Tunnel Assay	1 Slide
16-2019	Kidney cancer	IHC, FISH, Tunnel Assay	1 Slide
16-2020	Stomach Cancer	IHC, FISH, Tunnel Assay	1 Slide
16-2021	Normal stomach (matching 16-2020)	IHC, FISH, Tunnel Assay	1 Slide
16-2022	Esophagus cancer	IHC, FISH, Tunnel Assay	1 Slide
16-2023	Liver cancer	IHC, FISH, Tunnel Assay	1 Slide
16-2024	Liver cancer-metastasis-normal	IHC, FISH, Tunnel Assay	1 Slide
16-2025	Non-neoplastic liver (matching 16-2023)	IHC, FISH, Tunnel Assay	1 Slide
16-2026	Thyroid cancer-normal	IHC, FISH, Tunnel Assay	1 Slide
16-2027	Various sarcomas	IHC, FISH, Tunnel Assay	1 Slide
16-2029	Lipomatous Tumors	IHC, FISH, Tunnel Assay	1 Slide
16-2031	Normal endometrium	IHC, FISH, Tunnel Assay	1 Slide
16-2032	Uterine cervix cancer-metastasis-normal	IHC, FISH, Tunnel Assay	1 Slide
16-2033	Gastrointestinal stromal tumor, primary-metastasis-normal	IHC, FISH, Tunnel Assay	1 Slide
16-2034	Metastatic cancer to ovary	IHC, FISH, Tunnel Assay	1 Slide
16-2036	Common Cancers (1)	IHC, FISH, Tunnel Assay	1 Slide
16-2037	Normal matching tissues of Common Cancers (1)	IHC, FISH, Tunnel Assay	1 Slide
16-2038	Common Cancers (2)	IHC, FISH, Tunnel Assay	1 Slide
16-2039	Normal matching tissues of Common Cancers (2)	IHC, FISH, Tunnel Assay	1 Slide
16-2040	Common Cancers (3)	IHC, FISH, Tunnel Assay	1 Slide
16-2041	Normal matching tissues of Common Cancers (3)	IHC, FISH, Tunnel Assay	1 Slide
16-2046	Normal organs from adult female monkeys	IHC, FISH, Tunnel Assay	1 Slide
16-2050	Normal organs of adult rats, perfusion fixation	IHC, FISH, Tunnel Assay	1 Slide
16-2051	Normal organs of adult mice, perfusion fixation	IHC, FISH, Tunnel Assay	1 Slide



Apoptosis or programmed cell death is a key regulator of physiological growth control and regulation of tissue homeostasis. Inappropriately regulated apoptosis has been implicated in various diseases like Alzheimer's disease and cancer. In the early stages of apoptosis, the asymmetric position of Phosphatidyl Serine (PS) is disrupted. PS which is located on the inner leaflet of plasma membrane is exposed to outside. It acts as a signal for recognition and phagocytosis. The Annexin V is a Ca<sup>2+</sup> dependent phospholipid binding protein has a high affinity for phosphatidyl serine. Annexin V-FITC is used to detect apoptotic cells.

**Features:**

- Fast and easy to use.
- Identify cells undergoing apoptosis.
- Can be used either in flow cytometry or fluorescence microscopy.
- Enough reagent to test 100 samples.

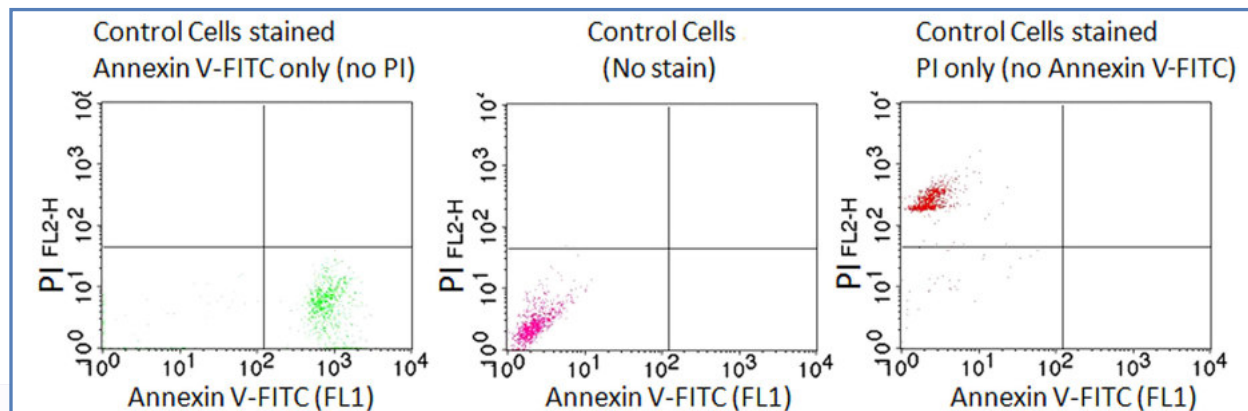


Fig.1: Stained or unstained Control Cells were shown using the Annexin V-FITC Apoptosis Detection Kit.

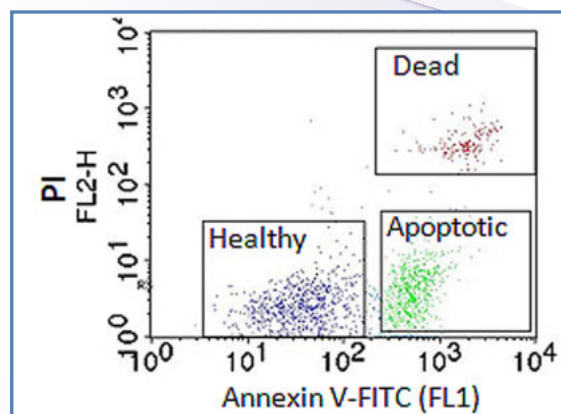


Fig 2: Jurkat cells were treated with 1 µg/ml Staurosporin for 4 hours to induce apoptosis. Cells were detached with Celltase and stained with the Annexin V-FITC Apoptosis Detection Kit.

Product Name	Catalog NO.	Content
Annexin V-FITC Apoptosis Detection Kit	17-1002	100 Tests
7-AAD Staining Solution	17-1004	100 Tests

## Product Categories

- Cancer Markers
- Caspase Antibodies
- Active Caspase3 Antibody
- Apoptosis Detection Kits
- Histone Methylation Antibodies
- Caspase Inhibitors
- NF- $\kappa$ B Antibodies
- Tissue Microarrays



**Releasing Soon  
CAR-T  
Reagents**

### Contact Us

9853 Pacific Heights Blvd. Suite D.  
San Diego, CA 92121 USA  
Tel: +1-858-263-4982 | Fax: +1-858-205-1192  
Email: [support@abeomics.com](mailto:support@abeomics.com)  
[www.abeomics.com](http://www.abeomics.com)

☎ +1-858-263-4982

✉ [support@abeomics.com](mailto:support@abeomics.com)