



Respiratory Syncytial Virus, A2 Strain (RSV)

Catalog number

R1600-51A

Supplier

United States Biological

Respiratory syncytial virus (RSV) is a major cause of respiratory illness in young children. RSV infection produces a variety of signs and symptoms involving different areas of the respiratory tract, from the nose to the lungs. RSV is a negative sense, enveloped RNA virus. The virion is variable in shape and size with average diameter of between 120 and 300nm. The 63kD RSV fusion protein of the RSV 2 strain (subtype A) directs fusion of viral and cellular membranes, results in viral penetration, and can direct fusion of infected cells with adjoining cells, resulting in the formation of syncytia or multi nucleated giant cells.

Applications:

Suitable for use in Western Blot. Other applications not tested.

Recommended Dilutions

Western Blot: 1:500-1:1000

Optimal dilutions to be determined by the researcher.

Storage and Stability

May be stored at 4°C for short-term only. Aliquot to avoid repeated freezing and thawing. Store at -20°C. Aliquots are stable for at least 12 months. For maximum recovery of product, centrifuge the original vial after thawing and prior to removing the cap.

Immunogen

Synthetic peptide corresponding to aa180-198, TCWAICKRIPNKKPGKK, of human Respiratory Syncytial Virus (RSV) G protein A2 strain.

Formulation

Supplied as a liquid in PBS, 0.02% sodium azide.

Purity

Purified by affinity chromatography.

Specificity

Recognizes human Respiratory Syncytial Virus (RSV) G protein, A2 strain.

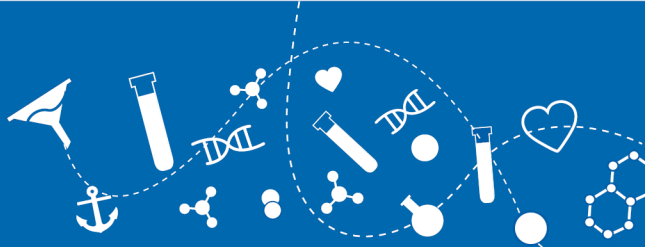
Product Type

Pab

Isotype

IgG

Grade



Affinity Purified

Applications

WB

Storage

-20°C