



Calnexin

Catalog number

C1035-26D2

Supplier

United States Biological

Calnexin is a calcium-binding protein that interacts with newly synthesized glycoproteins in the endoplasmic reticulum. As a chaperone protein, it assists in protein assembly by ensuring that only the properly folded protein progresses along the secretory pathway. It seems to play a major role in the quality control apparatus of the ER by retaining incorrectly folded proteins.

Applications

Suitable for use in ELISA and Western Blot. Other applications not tested.

Recommended Dilution

ELISA: 0.05-0.2ug/ml

Western Blot: 0.5-1ug/ml

Optimal dilutions to be determined by the researcher.

Storage and Stability

Lyophilized powder may be stored at -20°C. Reconstitute with sterile 40-50% glycerol, aliquot and store at -20°C. Reconstituted product is stable for 12 months at -20°C. For maximum recovery of product, centrifuge the original vial after thawing and prior to removing the cap. Further dilutions can be made in assay buffer.

Immunogen

Synthetic peptide within residues 250-300 of human calnexin protein (Swiss Prot: P27824).

Formulation

Supplied as a lyophilized powder in PBS, pH 7.4, 0.02% sodium azide.

Purity

Purified by immunoaffinity chromatography.

Specificity

Recognizes endogenous levels of human calnexin protein.

Product Type

Pab

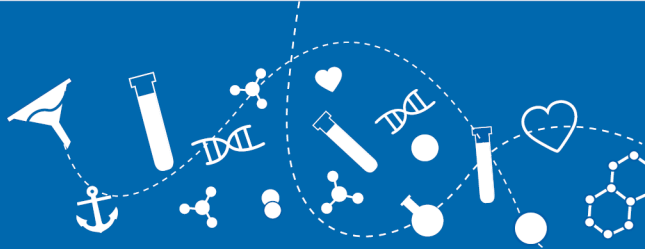
Source

human

Isotype

IgG

Grade



Affinity Purified

Applications

E WB

Crossreactivity

Hu

Storage

-20°C