

PROTEIN A DyLight™ 680 Conjugated - PA00-44

Code: PA00-44

Size: 100 µg

Product Description: PROTEIN A DyLight™ 680 Conjugated - PA00-44

Concentration: 1.0 mg/mL by UV absorbance at 280 nm

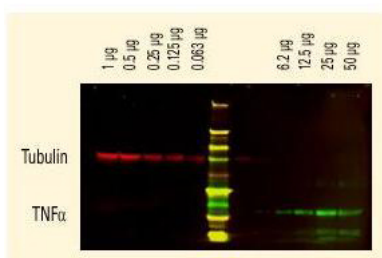
PhysicalState: Lyophilized

Label	DyLight™ 680
Emission Wavelength	715
Excitation Wavelength	682
Buffer	0.02 M Potassium Phosphate, 0.15 M Sodium Chloride, pH 7.2
Reconstitution Volume	100 µL
Reconstitution Buffer	Restore with deionized water (or equivalent)
Stabilizer	10 mg/mL Bovine Serum Albumin (BSA) - Immunoglobulin and Protease free
Preservative	0.01% (w/v) Sodium Azide
Storage Condition	Store vial at 4° C prior to restoration. For extended storage aliquot contents and freeze at -20° C or below. Avoid cycles of freezing and thawing. Centrifuge product if not completely clear after standing at room temperature. This product is stable for several weeks at 4° C as an undiluted liquid. Dilute only prior to immediate use.
Synonyms	ProA, Staphylococcus A protein, Protein A DyLight™ 680 Conjugated
Application Note	This product is designed for immunofluorescence microscopy, fluorescence based plate assays (FLISA) and fluorescent western blotting. This product is also suitable for multiplex analysis, including multicolor imaging, utilizing various commercial platforms. The emission spectra for this DyLight™ conjugate match the principle output wavelengths of most common fluorescence instrumentation.
Background	Protein A is a 56 kDa cell wall protein originated from Staphylococcus aureus. It contains five homologous Ig-binding domains. Each domain is able to bind the Fc fragment of a wide range of mammalian immunoglobulins. Protein A affinity to Fc may vary in dependence of IgG species origins or subclasses. Protein A is often coupled to solid matrixes such as Sepharose™, magnetic particles or latex for IgG purification from ascites, serum or hybridoma culture media. Protein A is often coupled with reporter molecules such as a fluorescent dye, DyLight™, enzymes, biotin, or other detection agents.
Purity And Specificity	This product is chromatographically pure Protein A and shows predominantly a single band by SDS-PAGE. Greater than 95% of the A280 material binds to Human IgG.
Assay Dilutions	User Optimized
Western Blot	>1:10,000
FLISA	>1:20,000
IF Microscopy	>1:5,000
Other Assays	User Optimized
Expiration	Expiration date is one (1) year from date of opening.
Related Products	
	200-301-268 Anti-AKT pS473 (MOUSE) Monoclonal Antibody - 200-301-268
	B304 NORMAL GOAT SERUM (NGS) - B304
	MB-070 Blocking Buffer for Fluorescent Western Blotting - MB-070
	PA50-00-0002 SEPHAROSE™ PROTEIN A - PA50-00-0002

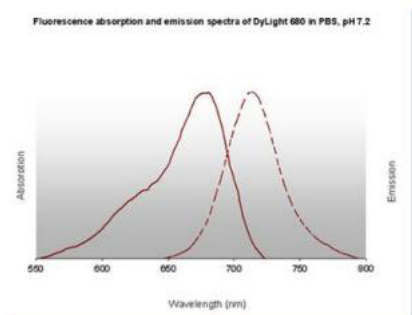
Images

1

DyLight™ dyes can be used for two-color Western Blot detection with low background and high signal. Anti-tubulin was detected using a DyLight™ 680 conjugate. Anti-TNF α was detected using the Odyssey® Infrared Imaging System developed by LI-COR.



2



3

Properties of DyLight™ Fluorescent Dyes.

Emission	Color	DyLight™ Dye	Ex/Em (nm)	ϵ ($M^{-1} cm^{-1}$)	Similar Dyes
Blue		405	400/420	30,000	Alexa™ 405, Cascade Blue
Green		488	493/518	70,000	Alexa™ 488, Cy2 [®] , FITC
Yellow		549	550/568	150,000	Alexa™ 546, Alexa 555, Cy3 [®] , TRITC
Red		649	646/674	250,000	Alexa™ 647, Cy5 [®]
Near Infrared		680	682/715	140,000	Alexa™ 680, Cy5.5 [®] , IRDye™ 700
Infrared		800	770/794	270,000	IRDye™ 800

Disclaimer

This product is for research use only and is not intended for therapeutic or diagnostic applications. Please contact a technical service representative for more information. All products of animal origin manufactured by Rockland Immunochemicals are derived from starting materials of North American origin. Collection was performed in United States Department of Agriculture (USDA) inspected facilities and all materials have been inspected and certified to be free of disease and suitable for exportation. All properties listed are typical characteristics and are not specifications. All suggestions and data are offered in good faith but without guarantee as conditions and methods of use of our products are beyond our control. All claims must be made within 30 days following the date of delivery. The prospective user must determine the suitability of our materials before adopting them on a commercial scale. Suggested uses of our products are not recommendations to use our products in violation of any patent or as a license under any patent of Rockland Immunochemicals, Inc. If you require a commercial license to use this material and do not have one, then return this material, unopened to: Rockland Inc., P.O. BOX 5199, Limerick, Pennsylvania, USA.