

SARS-CoV-2 S-RBD/HIS Tag Protein [HEK293 Expressed]

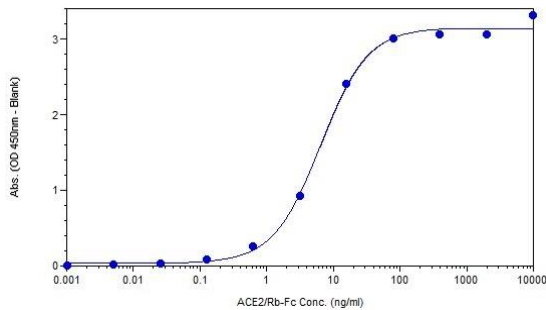
Recombinant Protein

Purified		Protein ID	YP_009724390.1
Catalog No.	P170-100	GeneID	43740568
Lot No.	P170-100-1		

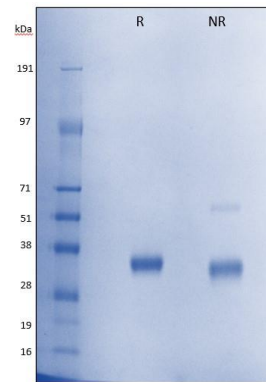
APPLICATIONS	ELISA
AMOUNT	100 µl
CONCENTRATION	1000 µg/ml
STORAGE/SHELF LIFE	Store at -20°C to -80°C / 3 months from date of receipt
PHYSICAL STATE	Liquid
BUFFER	Phosphate Buffered Saline (PBS) containing 0.09% Sodium Azide
ORIGIN	USA
PRODUCTION PROCEDURES	HEK293-derived SARS-CoV-2 S-RBD protein Ala319-Phe541, with a C-terminal 6-His tag. Protein was purified from cell culture supernatant by IMAC chromatography. 30-35kDa observed molecular weight by SDS-PAGE under reducing conditions. Purity >90% by SDS-PAGE. SARS-CoV-2 S-RBD protein binding activity determined in functional ELISA with ACE2/Rb-Fc (Cat# P710-001). See figure for details.

ADDITIONAL INFO <https://www.bethyl.com/product/P170-100>
Use the link above to view SDS, a current list of citations, and other product specific information.

This document certifies that this product has met all of the quality control standards defined by Bethyl Laboratories, Inc.
Michael Spencer, PhD Date: May 3, 2022



Analysis of Recombinant SARS-CoV-2 S-RBD/ HIS tag Protein by ELISA. *Sample:* Plate coated with SARS-CoV-2 S-RBD/HIS Tag (P170-100 lot 1) at 2 µg/ml. ACE2/Rb Fc Chimera Protein (P710-001 lot 1) 5-fold dilution series added beginning at 10,000 ng/ml. *Detection:* A120-111P used at 1:25K dilution.



Analysis of Recombinant SARS-CoV-2 S-RBD/ HIS tag Protein by SDS-PAGE and Coomassie staining. *Sample:* 2 µg/lane of Recombinant SARS-CoV-2 S-RBD/ HIS tag Protein (HEK293 Expressed) (P170-100 lot 1). *Detection:* Resolved on a 4-12% gradient gel under reducing (R) and non-reducing (NR) conditions and visualized by Coomassie Blue staining.