

ERBB2(D769Y)

Catalog Number: 26382

Gene Symbol: ERBB2/HER2/Neu

Description: Anti-ERBB2(D769Y) Mouse Monoclonal Antibody

Background: The HER-2/neu oncogene, a member of the epidermal growth factor receptor or erb-B gene-like family, encodes a transmembrane tyrosine kinase receptor that mediates extracellular signals activated by epidermal growth factors. Her2 abnormal has been strongly associated with many malignant tumors, especially with breast cancers. The expression level of Her2 is an important criterion in clinic evaluating of the progression of breast cancer

Immunogen: A synthetic peptide from the internal region of ERBB2, which includes the mutation of D769Y, human origin.

Tested Applications: ELISA, IF, IHC

Recommended Dilutions:

ELISA:	1:1000-1:2000
IF:	1:50-1:100
IHC:	1:50-1:100

Concentration: 1.0 mg/ml

Host: Mouse

Clonality: Monoclonal

Isotype: IgG

Purity: Purified from ascites

Format: Liquid

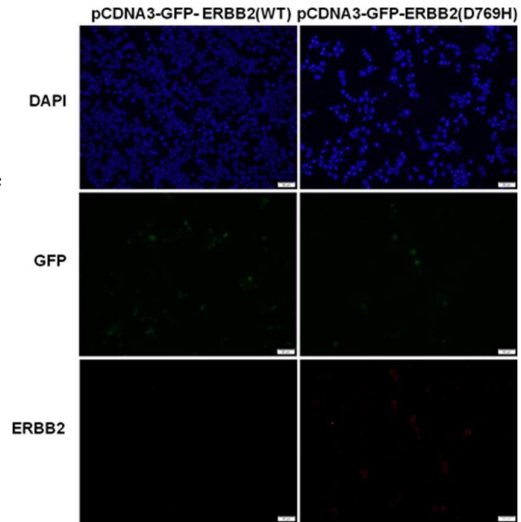
Preservative: No

Constituents: PBS (without Mg²⁺ and Ca²⁺), pH7.4, 150 mM NaCl, 50% glycerol

Species Reactivity: Recognizes ERBB2(D769Y), but not wild type ERBB2 protein from vertebrates.

Storage Conditions: Store at -20°C. Avoid repeated freezing and thawing

Immunofluorescence:



Immunofluorescence of cells expressing ERBB2 proteins with anti-ERBB2 (D769Y) antibody.

HEK293T cells were transfected with pCDNA3-GFP-ERBB2 (WT) plasmid (left column) or pCDNA3-GFP-ERBB2 (D769Y) plasmid (right column), then fixed and stained with anti-ERBB2 (D769Y) monoclonal antibody (Cat. # 26381).

FOR RESEARCH USE ONLY. NOT FOR DIAGNOSTIC APPLICATIONS