

Product Description

BRCA2(2793-3030)

Catalog Number: 26364-4

Gene Symbol BRCA2, BRCC2, FAD1, FCD, BROVCA2, PNCA2

Description: Anti-BRCA2(2793-3030) Mouse Monoclonal Antibody

Background: BRCA2 is a human tumor suppressor gene. Its protein, also called by the synonym breast cancer type 2 susceptibility protein, is responsible for repairing DNA. Mutations of BRCA2 can cause an increased risk of breast cancer. In addition to breast cancer in men and women, mutations in BRCA2 also lead to an increased risk of ovarian Fallopian tube, prostate, and pancreatic cancers, as well as malignant melanoma.

Immunogen: Purified BRCA2(2793-3030) protein, human origin.

Tested Applications: ELISA, WB, IF, IHC

Recommended Dilutions:

ELISA:	1:1000-1:2000
WB:	1:500-1:1000
IF:	1:50-1:100
IHC:	1:50-1:100

Concentration: 1 mg/ml

Host: Mouse

Clonality: Monoclonal

Isotype: IgG

Purity: Purified from ascites

Format: Liquid

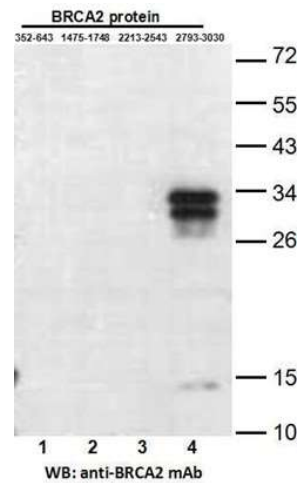
Preservative: No

Constituents: PBS (without Mg²⁺ and Ca²⁺), pH7.4, 150 mM NaCl, 50% glycerol

Species Reactivity: Recognizes BRCA2(2793-3030) of vertebrates.

Storage Conditions: Store at -20°C. Avoid repeated freezing and thawing

Western blot:



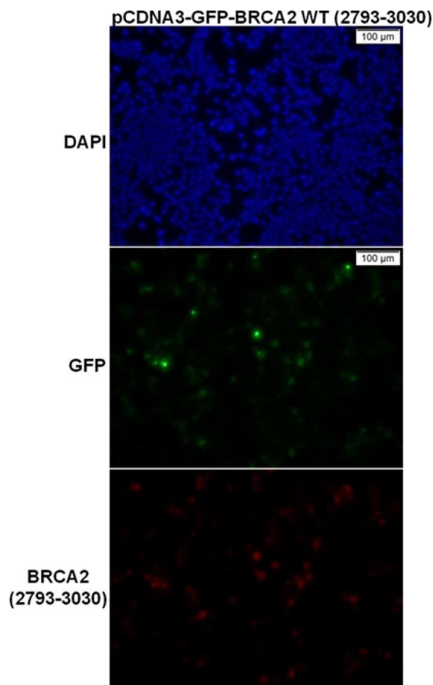
Western blot analysis of recombinant BRCA2 proteins.

Purified His-tagged BRCA2 (352-643)protein (lane1), His-tagged BRCA2 (1475-1748)protein(lane2), His-tagged BRCA2 (2213-2543) protein(lane3) and His-tagged BRCA2 (2793-3030) protein (lane4) were blotted with anti-BRCA2 (2793-3030) monoclonal antibody(Cat. # 26364-4).

FOR RESEARCH USE ONLY. NOT FOR DIAGNOSTIC APPLICATIONS

A helping hand for your research

Immunofluorescence:



Immunofluorescence of cells expressing BRCA2 (2793-3030) protein with anti-BRCA2 (2793-3030) antibody.

HEK293T cells were transfected with pCDNA3-GFP-BRCA2(2793-3030) plasmid, then fixed and stained with anti-BRCA2 (2793-3030) monoclonal antibody (Cat. # 26364-4).

FOR RESEARCH USE ONLY. NOT FOR DIAGNOSTIC APPLICATIONS