

Product Description

NFE2L2

Catalog Number: 26358

Gene Symbol: NFE2L2, NRF2

Description: Anti-NFE2L2 Mouse Monoclonal Antibody

Background: NFE2L2 protein is encoded by NFE2L2 gene. It is a basic leucine zipper protein that regulates the expression of antioxidant proteins that protect against oxidative damage triggered by injury and inflammation. Several drugs that stimulate the NFE2L2 pathway are being studied for treatment of diseases that are caused by oxidative stress.

Immunogen: Recombinant full-length protein of NFE2L2, human origin.

Tested Applications: ELISA, WB, IF, IHC

Recommended Dilutions:

ELISA:	1:1000-1:2000
WB:	1:500-1:1000
IF:	1:50-1:100
IHC:	1:10:100

Concentration: 1.0 mg/ml

Host: Mouse

Clonality: Monoclonal

Isotype: IgG

Purity: Purified from ascites

Format: Liquid

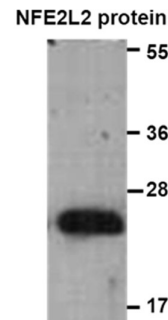
Preservative: No

Constituents: PBS (without Mg²⁺ and Ca²⁺), pH7.4, 150 mM NaCl, 50% glycerol

Species Reactivity: Recognizes NFE2L2, but not wild type NFE2L2 protein from vertebrates.

Storage Conditions: Store at -20°C. Avoid repeated freezing and thawing.

Western blot:



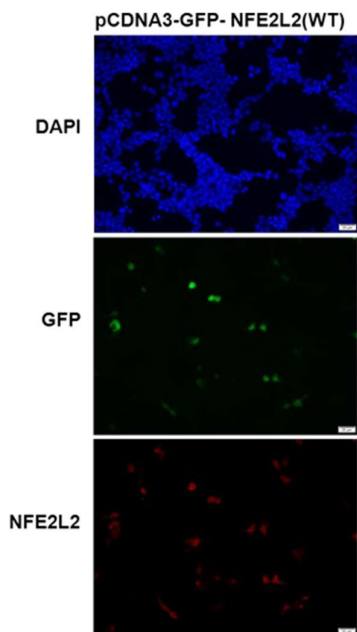
WB: anti-NFE2L2 WT mAb

Western blot analysis of recombinant NFE2L2 protein.

Purified His-tagged NFE2L2 protein was blotted with anti-NFE2L2 monoclonal antibody (Cat. # 26358).

FOR RESEARCH USE ONLY. NOT FOR DIAGNOSTIC APPLICATIONS

Immunofluorescence:



Immunofluorescence of cells expressing NFE2L2 proteins with anti-NFE2L2 antibody.

HEK293T cells were transfected with pCDNA3-GFP-NFE2L2 (WT) plasmid, then fixed and stained with anti-NFE2L2 monoclonal antibody (Cat. # 26358).

FOR RESEARCH USE ONLY. NOT FOR DIAGNOSTIC APPLICATIONS