

FBXW7(R479L)

Catalog Number: 26347

Gene Symbol: FBW6; FBW7; FBXW7; FBX30; CDC4; SEL10

Description: Anti-FBXW7(R479L) Mouse Monoclonal Antibody

Background: F-box/WD repeat-containing protein 7 is a protein that in humans is encoded by the FBXW7 gene. The F-box proteins constitute one of the four subunits of ubiquitin protein ligase complex called SCFs(SKP1-cullin-F-box), which function in phosphorylation-dependent ubiquitination. Mutations in this gene are detected in ovarian, breast and colorectal cancer cell lines, implicating the gene's potential role in the pathogenesis of human cancers.

Immunogen: A synthetic peptide from the internal region of FBXW7, which includes the mutation of R479L, human origin.

Tested Applications: ELISA, WB

Recommended Dilutions:

ELISA: 1:1000-1:5000

WB: 1:500-1:1000

Concentration: 1.0 mg/ml

Host: Mouse

Clonality: Monoclonal

Isotype: IgG

Purity: Purified from ascites

Format: Liquid

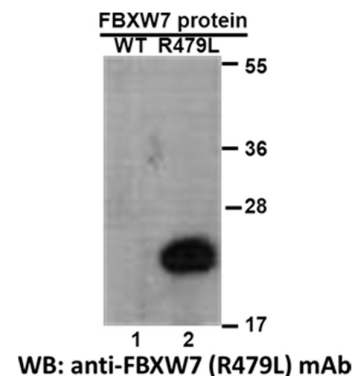
Preservative: No

Constituents: PBS (without Mg²⁺ and Ca²⁺), pH7.4, 150 mM NaCl, 50% glycerol

Species Reactivity: Recognizes FBXW7(R479L), but not wild type FBXW7 protein from vertebrates.

Storage Conditions: Store at -20°C. Avoid freeze / thaw cycles.

Western blot:



Western blot analysis of recombinant FBXW7 (R479L) and wildtype proteins.

Purified His-tagged FBXW7 (R479L) protein (lane 2) and corresponding wildtype protein (lane 1) were blotted with anti-FBXW7 (R479L) monoclonal antibody (Cat. # 26347).

FOR RESEARCH USE ONLY. NOT FOR DIAGNOSTIC APPLICATIONS