

## CTCF(K344E)

**Catalog Number:** 26324

**Gene Symbol:** CTCF; MRD21

**Description:** Anti-CTCF(K344E) Mouse Monoclonal Antibody

**Background:** Transcriptional repressor CTCF also known as 11-zinc finger protein or CCCTC-binding factor is a transcription factor that in humans is encoded by CTCF gene. CTCF is involved in many cellular processes, including transcriptional regulation, insulator activity, recombination, and regulation of chromatin architecture.

**Immunogen:** A synthetic peptide from the internal region of CTCF, which includes the mutation of K344E, human origin.

**Tested Applications:** ELISA, WB, IF, IHC

**Recommended Dilutions:**

ELISA: 1:1000-1:5000

WB: 1:500-1:1000

IF: 1:50-1:100

IHC: 1:50-1:100

**Concentration:** 1 mg/ml

**Host:** Mouse

**Clonality:** Monoclonal

**Isotype:** IgG

**Purity:** Purified from ascites

**Format:** Liquid

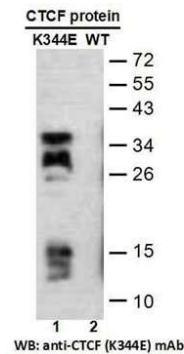
**Preservative:** No

**Constituents:** PBS (without Mg<sup>2+</sup> and Ca<sup>2+</sup>), pH7.4, 150 mM NaCl, 50% glycerol

**Species Reactivity:** Recognizes CTCF(K344E), but not wild type CTCF protein from vertebrates.

**Storage Conditions:** Store at -20°C. Avoid repeated freezing and thawing

### Western blot:

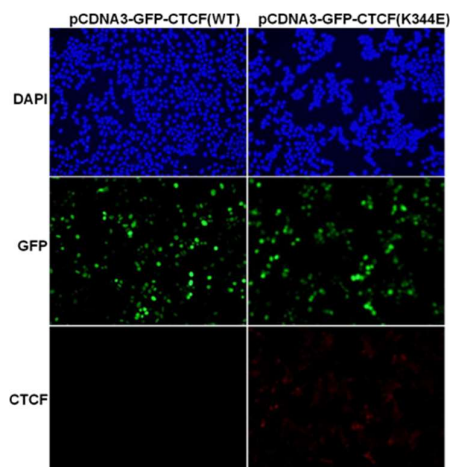


### Western blot analysis of recombinant CTCF (K344E) and wild type proteins.

Purified His-tagged CTCF(K344E) protein (lane 1) and corresponding wild type protein (lane 2) were blotted with anti-CTCF(K344E) monoclonal antibody (Cat. # 26324).

FOR RESEARCH USE ONLY. NOT FOR DIAGNOSTIC APPLICATIONS

**Immunofluorescence:**



**Immunofluorescence of cells expressing CTCF proteins with anti-CTCF(K344E) antibody.**

HEK293T cells were transfected with pCDNA3-GFP-CTCF (WT) plasmid (left column) or pCDNA3-GFP-CTCF (K344E) plasmid (right column), then fixed and stained with anti-CTCF (K344E) monoclonal antibody (Cat. # 26324).

---

**FOR RESEARCH USE ONLY. NOT FOR DIAGNOSTIC APPLICATIONS**