

BRAF (V600A)

Catalog Number: 26199

Gene Symbol: BRAF, BRAF1, RAFB1

Description: Anti-BRAF (V600A) Mouse Monoclonal Antibody

Background: BRAF belongs to a family of serine-threonine protein kinases. As a part of a signaling pathway known as the RAS/MAPK pathway, it plays an important part in many cellular processes. The processes include cell proliferation, differentiation and transcriptional regulation. Mutations in the BRAF gene cause diseases. Inherited mutations in BRAF cause cardiofaciocutaneous syndrome. Acquired mutations in BRAF have been found in cancers.

Immunogen: A synthetic peptide from the internal region of BRAF which includes the mutation of V600A, human origin.

Tested applications: ELISA, WB, IF, IHC

Recommended Dilutions:

ELISA:	1:1000-1:5000
WB :	1:500-1:1000
IF:	1:50-1:100
IHC:	1:25-1:100

Concentration: 1 mg/ml

Host: Mouse

Clonality: Monoclonal

Isotype: IgG

Purity: Purified from ascites

Format: Liquid

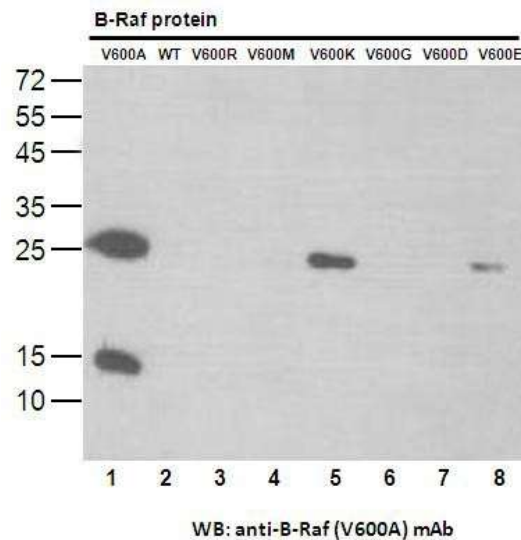
Preservative: No

Constituents: PBS (without Mg²⁺ and Ca²⁺), pH7.4, 150 mM NaCl, 50% glycerol

Species Reactivity: Recognizes V600A mutant, but not wild-type BRAF of vertebrates.

Storage Conditions: Store at -20°C. Avoid freeze / thaw cycles.

Western blot:

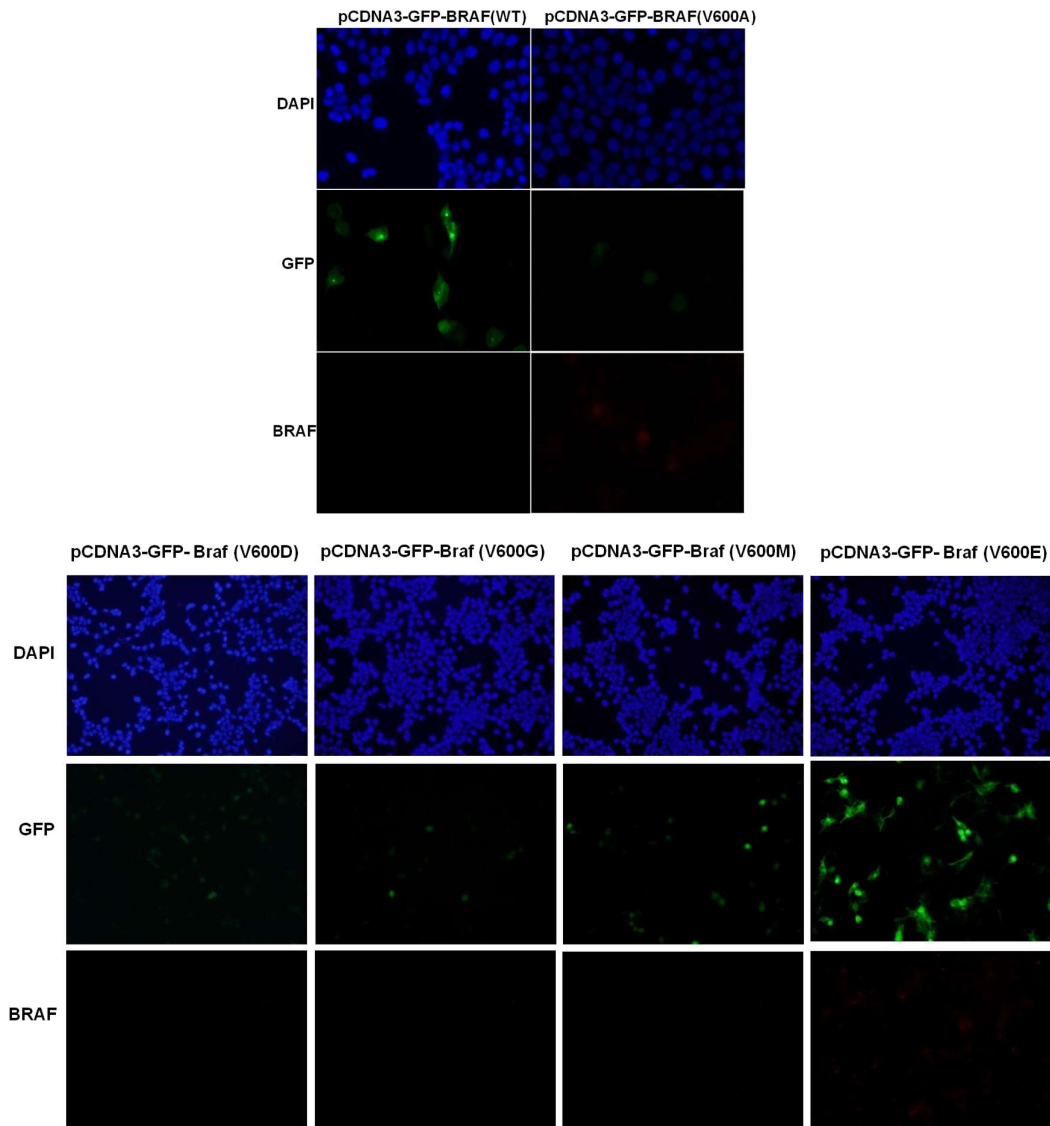


Western blot analysis of recombinant BRAF proteins.

Purified His-tagged BRAF (V600A) protein (lane 1), corresponding wildtype protein (lane 2), His-tagged BRAF (V600R) protein (lane 3), His-tagged BRAF (V600M) protein (lane 4), His-tagged BRAF (V600K) protein (lane 5), His-tagged BRAF (V600G) protein (lane 6), His-tagged BRAF (V600D) protein (lane 7) and His-tagged BRAF (V600E) protein (lane 8) were blotted with anti-BRAF (V600A) monoclonal antibody (Cat. # 26199).

FOR RESEARCH USE ONLY. NOT FOR DIAGNOSTIC APPLICATIONS

Immunofluorescence:



Immunofluorescence of cells expressing BRAF proteins with anti-BRAF (V600A) antibody.

HEK293T cells were transfected with pCDNA3-GFP-BRAF (WT) plasmid, pCDNA3-GFP-BRAF (V600A) plasmid, pCDNA3-GFP-BRAF (V600D) plasmid, pCDNA3-GFP-BRAF (V600G) plasmid, pCDNA3-GFP-BRAF (V600M) plasmid or pCDNA3-GFP-BRAF (V600E) plasmid, then fixed and stained with anti-BRAF (V600A) monoclonal antibody (Cat. # 26199).

FOR RESEARCH USE ONLY. NOT FOR DIAGNOSTIC APPLICATIONS