

## Ras(Q61H)

**Catalog Number:** 26195

**Gene Symbol:** RAS

**Description:** Anti-Ras(Q61H) Mouse Monoclonal Antibody

**Background:** Ras protein is a membrane-associated GTPase signaling protein that regulates proliferation, differentiation, and cell survival. Ras Q61H mutation results in decreased GTPase activity and constitutive signaling and is correlated with the development of pancreatic intraepithelial neoplasia and lung lesions.

**Immunogen:** A synthetic peptide from the internal region of Ras which includes the mutation of Q61H, human origin

**Tested Applications:** ELISA, WB, IHC

**Recommended Dilutions:**

ELISA 1:100-1:5000

WB 1:100-1:2000

IHC 1:100-1:500

**Concentration:** 2 mg/ml

**Host:** Mouse

**Clonality:** Monoclonal

**Isotype:** IgG

**Purity:** Purified from ascites

**Format:** Liquid

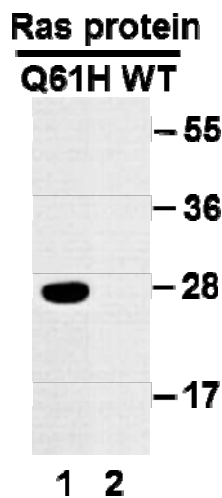
**Preservative:** No

**Constituents:** PBS (without Mg<sup>2+</sup> and Ca<sup>2+</sup>), pH7.4, 150 mM NaCl, 50% glycerol

**Species Reactivity:** Recognizes RAS (Q61H) mutated, but not wild type Ras protein of vertebrates.

**Storage Conditions:** Store at -20°C. Avoid repeated freezing and thawing

### Western blot:



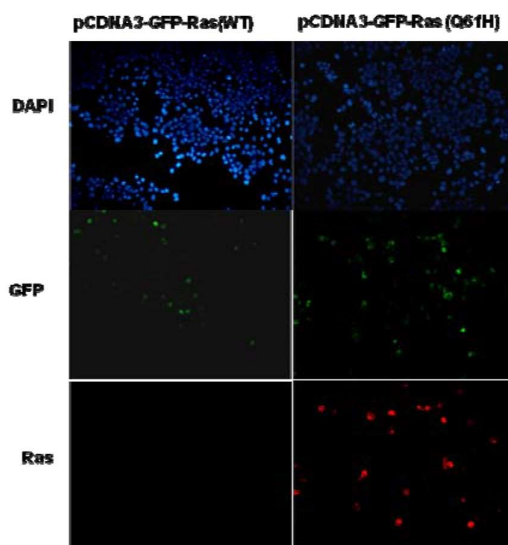
### WB: Anti-Ras (Q61H) mAb

**Western blot analysis of recombinant Ras WT and Q61H proteins.**

Equal amount of purified Ras(Q61H) (lane 1) and corresponding wild type protein (lane 2) were loaded and blotted with anti-Ras(Q61H) mouse monoclonal antibody (Cat. # 26195).

FOR RESEARCH USE ONLY. NOT FOR DIAGNOSTIC APPLICATIONS

## Immunofluorescence:



### Immunofluorescence of cells expressing Ras (Q61H) protein with anti-Ras (Q61H) antibody.

HEK293T cells were transfected with pCDNA3-GFP-Ras (WT) plasmid (left column) or pCDNA3-GFP-Ras (Q61H) plasmid (right column), then fixed and stained with anti-Ras(Q61H) monoclonal antibody (Cat. # 26195).

---

FOR RESEARCH USE ONLY. NOT FOR DIAGNOSTIC APPLICATIONS