

## Product Description

### B-RAF

**Catalog Number:** 26129

**Gene Symbol:** BRAF, BRAF1, RAFB1

**Description:** Anti-B-Raf Mouse Monoclonal Antibody

**Background:** B-Raf belongs to the TKL Ser/Thr protein kinase family, RAF subfamily. It is involved in the transduction of mitogenic signals from the cell membrane to the nucleus and may play a role in the postsynaptic responses of hippocampal neuron. B-Raf is located to nucleus and cytoplasm and expressed in brain and testis.

**Immunogen:** A synthetic peptide from the internal region of B-Raf, human origin.

**Tested Applications:** ELISA, WB, IF, IHC

**Recommended Dilutions:**

ELISA: 1:1000-1:5000

WB: 1:100-1:1000

IHC: 1:50-1:100

**Concentration:** 1 mg/ml

**Host:** Mouse

**Clonality:** Monoclonal

**Isotype:** IgG

**Purity:** Purified from ascites

**Format:** Liquid

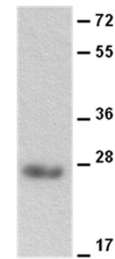
**Preservative:** No

**Constituents:** PBS (without Mg<sup>2+</sup> and Ca<sup>2+</sup>), pH7.4, 150 mM NaCl, 50% glycerol

**Species Reactivity:** Anti-B-Raf antibody recognizes B-Raf of vertebrates.

**Storage Conditions:** Store at -20°C. Avoid repeated freezing and thawing

#### Western blot:



WB: anti-B-Raf mAb

#### Western blot analysis of recombinant B-RAF protein.

Purified His-tagged B-Raf protein (Cat. # 10161) was blotted with anti-B-Raf monoclonal antibody (Cat. # 26129).

FOR RESEARCH USE ONLY. NOT FOR DIAGNOSTIC APPLICATIONS