

## $\beta$ -Tubulin

**Catalog Number:** 21089

**Gene Symbol:** TUBB

**Description:** Anti- $\beta$ -Tubulin Rabbit Polyclonal Antibody

**Background:** There are five members of the tubulin family ( $\alpha$ ,  $\beta$ ,  $\gamma$ ,  $\delta$ , and  $\epsilon$ ). The most common members are  $\alpha$  and  $\beta$  tubulins which form heterodimers as the basic structural unit of microtubules.

**Immunogen:** A synthetic peptide from the internal region of human  $\beta$ -tubulin protein

**Tested Applications:** ELISA, WB, IHC, IP

**Recommended Dilutions:**

ELISA	1:100-1:5000
WB	1:100-1:1000
IHC	1:50-1:100

**Concentration:** 0.2 mg/ml

**Host:** Rabbit

**Clonality:** Polyclonal

**Purity:** Purified from serum

**Format:** Liquid

**Storage buffer:**

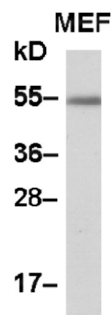
**Preservative:** No

**Constituents:** PBS (without  $Mg^{2+}$  and  $Ca^{2+}$ ), pH7.4, 150 mM NaCl, 50% glycerol

**Species Reactivity:**  $\beta$ -Tubulin antibody recognizes  $\beta$ -tubulin proteins from vertebrates.

**Storage Conditions:** Store at  $-20^{\circ}C$ . Avoid freeze / thaw cycles

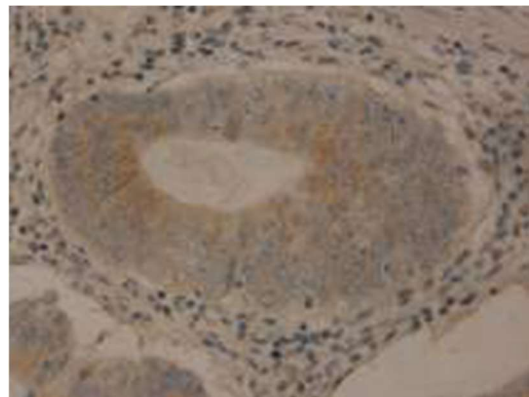
### Western blot:



**WB: anti-TUBB pAb**

MEF whole-cell lysate was used for Western blot with anti- $\beta$ -tubulin polyclonal antibody (Cat. # 21089).

### Immunohistochemistry:



Immunohistochemical staining of formalin-fixed paraffin-embedded colon carcinoma using the affinity purified anti  $\beta$ -tubulin polyclonal antibody (Cat. # 21089) with a 1:50 dilution

FOR RESEARCH USE ONLY. NOT FOR DIAGNOSTIC APPLICATIONS