

Rab7

Catalog Number: 26055

Gene Symbol: RAB7

Description: Anti-Rab7 Mouse Monoclonal Antibody

Background: Rab7 belongs to the Rab family of small GTPases. Rab7 is located in the late endosome, lysosome, cytoplasmic vesicle, phagosome and melanosome. It is involved in the late endocytic transport and contributes to the maturation of phagosomes.

Immunogen: Purified His-Rab7 protein

Tested Applications: ELISA, WB, IHC, IP

Recommended Dilutions:

ELISA 1:100-1:5000

WB 1:100-1:2000

IHC 1:100-1000

Concentration: 0.8 mg/ml

Host: Mouse

Clonality: Monoclonal

Isotype: IgG

Purity: Purified from ascites

Format: Liquid

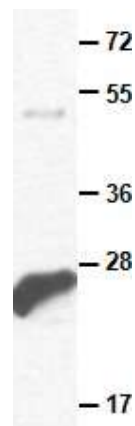
Preservative: No

Constituents: PBS (without Mg^{2+} and Ca^{2+}), pH7.4, 150 mM NaCl, 50% glycerol

Species Reactivity: Rab7 antibody recognizes Rab7 proteins of vertebrates.

Storage Conditions: Store at $-20^{\circ}C$. Avoid freeze / thaw cycles.

Western blot:



Western blot analysis of recombinant Rab7 proteins. Purified His-tagged Rab7 protein (Cat. # 10167) was blotted with anti-Rab7 monoclonal antibody (Cat. # 26055).

FOR RESEARCH USE ONLY. NOT FOR DIAGNOSTIC APPLICATIONS