

Product Description

SLC7A5

Catalog Number: 21118

Gene Symbol: SLC7A5

Description: Anti- SLC7A5 Rabbit Polyclonal Antibody

Background: Solute carrier family 7 member 5 (also known as large neutral amino acids transporter small subunit 1) is a protein encoded by the SLC7A5 gene in human. SLC7A5 plays a role in neuronal cell proliferation, is involved in the uptake of methylmercury (MeHg) and plays a role in metal ion homeostasis and toxicity.

Immunogen: A synthetic peptide from the internal region of SLC7A5 of human origin.

Tested Applications: ELISA, WB, IHC, IP

Recommended Dilutions:

ELISA: 1:1000-1:5000

WB: 1:100-1:1000

IHC: 1:50-1:100

Concentration: 0.25 mg/ml

Host: rabbit

Clonality: Polyclonal

Purity: Purified from serum

Format: Liquid

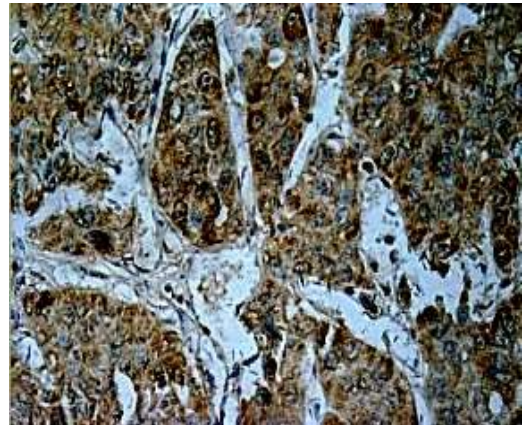
Preservative: No

Constituents: PBS (without Mg^{2+} and Ca^{2+}), pH 7.4, 150 mM NaCl, 50% glycerol

Species Reactivity: Anti- SLC7A5 antibody recognizes SLC7A5 of vertebrates.

Storage Conditions: Store at $-20^{\circ}C$. Avoid freeze / thaw cycles

Immunohistochemistry:



Immunohistochemical staining of formalin-fixed paraffin-embedded hepatocellular carcinoma using the anti-SLC7A5 pAb (Cat. # 21118) with 1:50 dilution.

FOR RESEARCH USE ONLY. NOT FOR DIAGNOSTIC APPLICATIONS