

## Albumin

**Catalog Number:** 21112

**Gene Symbol:** Albumin

**Description:** Anti-Albumin Rabbit Polyclonal Antibody

**Background:** Serum albumin is the most abundant blood plasma protein in mammals. Albumin is essential for maintaining the osmotic pressure needed for proper distribution of body fluids between intravascular compartments and body tissues. It also acts as a plasma carrier by non-specifically binding several hydrophobic steroid hormones and as a transport protein for heme and fatty acids. Too much serum albumin in the body can be harmful.

**Immunogen:** A synthetic peptide from the N-terminal region of human Albumin protein

**Tested Applications:** ELISA, WB, IHC, IP

**Recommended Dilutions:**

ELISA	1:100-1:5000
WB	1:100-1:1000
IHC	1:100-1:1000

**Concentration:** 0.2 mg/ml

**Host:** Rabbit

**Clonality:** Polyclonal

**Purity:** Purified from serum

**Format:** Liquid

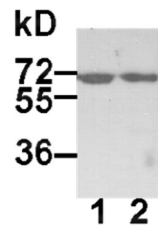
**Preservative:** No

**Constituents:** PBS (without  $Mg^{2+}$  and  $Ca^{2+}$ ), pH 7.4, 150 mM NaCl, 50% glycerol

**Species Reactivity:** Albumin antibody recognizes Albumin proteins from mammals.

**Storage Conditions:** Store at  $-20^{\circ}C$ . Avoid freeze / thaw cycles

**Western blot:**



**WB: anti-Albumin pAb**

HEK-293T (lane 1) and MEF (lane 2) whole-cell lysates were used for Western blot with anti-Albumin polyclonal antibody (Cat. # 21112).

FOR RESEARCH USE ONLY. NOT FOR DIAGNOSTIC APPLICATIONS