

# Product Description

## Rab7A

**Catalog Number:** 21069

**Gene Symbol:** RAB7A

**Description:** Anti-Rab7A Rabbit Polyclonal Antibody

**Background:** Rab7A belongs to the Rab family of small GTPases. Rab7A is located in the late endosome, lysosome, cytoplasmic vesicle, phagosome and melanosome. It is involved in the late endocytic transport and contributes to the maturation of phagosomes.

**Immunogen:** A synthetic peptide near the C-terminus of Rab7A of human origin.

**Tested Applications:** ELISA, WB, IHC, IP

**Recommended Dilutions:**

ELISA 1:100-1:5000

WB 1:100-1:2000

IHC 1:10-1:100

**Concentration:** 0.2 mg/ml

**Host:** Rabbit

**Clonality:** Polyclonal

**Purity:** Purified from serum

**Format:** Liquid

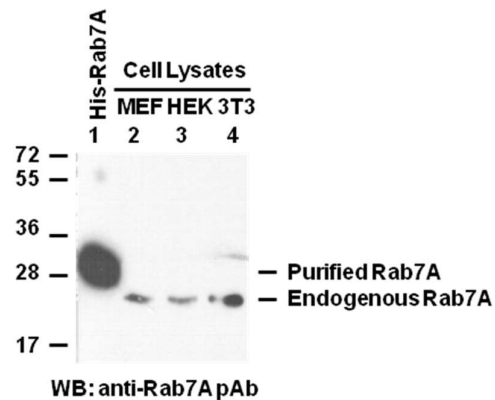
**Preservative:** No

**Constituents:** PBS (without Mg<sup>2+</sup> and Ca<sup>2+</sup>), pH7.4, 150 mM NaCl, 50% glycerol

**Species Reactivity:** Rab7A antibody recognizes Rab7A from vertebrates.

**Storage Conditions:** Store at -20°C. Avoid freeze / thaw cycles

**Western blot:**



Purified recombinant His-tagged Rab7A protein (lane 1, Cat. # 10167), MEF (lane 2), HEK293 (lane 3) and NIH 3T3 (lane 4) cell lysates were used for Western blot with anti-Rab7A polyclonal antibody (Cat. # 21069).

FOR RESEARCH USE ONLY. NOT FOR DIAGNOSTIC APPLICATIONS