

Rab26

Catalog Number: 21058

Gene Symbol: RAB26

Description: Anti-Rab26 Rabbit Polyclonal Antibody

Background: Ras-related protein Rab26 plays a role in recruiting mature granules to the plasma membrane upon beta-adrenergic stimulation.

Immunogen: A synthetic peptide from the C-terminal of human Rab26 protein

Tested Applications: ELISA, WB, IHC, IP

Recommended Dilutions:

ELISA	1:100-1:5000
WB	1:100-1:1000
IHC	1:100-1:1000

Concentration: 0.2 mg/ml

Host: Rabbit

Clonality: Polyclonal

Purity: Purified from serum

Format: Liquid

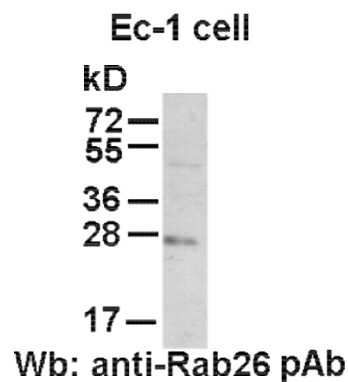
Preservative: No

Constituents: PBS (without Mg^{2+} and Ca^{2+}), pH7.4, 150 mM NaCl, 50% glycerol

Species Reactivity: Rab26 antibody recognizes Rab26 proteins from vertebrates.

Storage Conditions: Store at $-20^{\circ}C$. Avoid freeze / thaw cycles

Western blot:



EC-1 whole-cell lysate was used for Western blot with anti-Rab26 polyclonal antibody (Cat. # 21058).

FOR RESEARCH USE ONLY. NOT FOR DIAGNOSTIC APPLICATIONS