

Rab14

Catalog Number: 21047

Gene Symbol: RAB14

Description: Anti-Rab14 Rabbit Polyclonal Antibody

Background: Small GTPase Rab14 localizes to the Golgi/TGN and to early endosomes and is involved in the apical targeting pathway.

Immunogen: A synthetic peptide from the C-terminal end of Rab14 protein.

Tested Applications: ELISA, WB, IHC

Recommended Dilutions:

ELISA	1:100-1:5000
WB	1:100-1:1000
IHC	1:100-1000

Concentration: 0.2 mg/ml

Host: Rabbit

Clonality: Polyclonal

Purity: Purified from serum

Format: Liquid

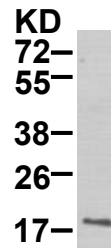
Preservative: No

Constituents: PBS (without Mg^{2+} and Ca^{2+}), pH7.4, 150 mM NaCl, 50% glycerol

Species Reactivity: Rab14 antibody recognizes Rab14 from vertebrates.

Storage Conditions: Store at $-20^{\circ}C$. Avoid freeze / thaw cycles

Western blot:



WB: anti-Rab14 pAb

HepG cell lysate was used for Western blot with anti-Rab14 polyclonal antibody (Cat. # 21047).

FOR RESEARCH USE ONLY. NOT FOR DIAGNOSTIC APPLICATIONS