

## Opal Prestained Protein Standard 10-245kDa - MB-210-0500

**Code:** MB-210-0500

**Size:** 500 µL

**Product Description:** Opal Prestained Protein Standard 10-245kDa - MB-210-0500

**PhysicalState:** Liquid (in 1x Loading Buffer)

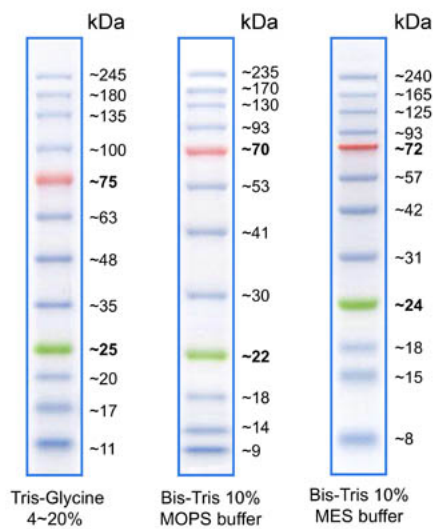
<b>Label</b>	Unconjugated
<b>Buffer</b>	See application note.
<b>Storage Condition</b>	Store vial at 2°-8° C. Can be stored at room temperature for up to six (6) months or at -20° C for up to two (2) years.
<b>Synonyms</b>	Protein ladder, Protein marker, Protein standard, Protein molecular weight standard, Molecular weight marker, Protein molecular weight ladder, Prestained molecular weight marker, Prestained molecular weight ladder, Prestained protein ladder, Protein marker
<b>Application Note</b>	Opal Prestained Protein Standard 10-245kDa is supplied in gel loading buffer and is ready to use. Do not heat, dilute, add reducing agent before loading. Suggested load volumes: 3 l or 5 l per loading for clear visualization during electrophoresis on 15-well or 10-well mini-gel, respectively - 2-3 l per well for general Western blot transferring. - Apply more for thicker (>1.5 mm) or larger gel.
<b>Background</b>	Opal Prestained Protein Standard 10-245kDa is a three-color protein standard with 12 pre-stained proteins covering a wide range molecular weights from 10 to 245 kDa. Proteins are covalently coupled with a blue chromophore except for two reference bands (one green and one red band at 25 kDa and 75 kDa respectively) made visible when separated on SDS-PAGE (Tris-glycine buffer). Opal Prestained Protein Standard 10-245kDa is designed for monitoring protein separation during SDS-polyacrylamide gel electrophoresis, verification of Western blot transfer efficiency on membranes (PVDF, nylon, or nitrocellulose) and for approximating the size of proteins.
<b>Purity And Specificity</b>	Opal Prestained Protein Standard 10-245kDa contains approximately 0.1-0.4 mg/ml of each protein in the buffer (20 mM Tris-phosphate, pH 7.5 at 25°C), 2 % SDS, 1 mM Dithiothreitol, 3.6 M Urea, and 15 % (v/v) Glycerol).
<b>Assay Dilutions</b>	User Optimized
<b>Other Assays</b>	User Optimized
<b>Expiration</b>	Expiration date is one (1) year from date of opening.

### Related Products

MB-010-1000	Molecular Biology Grade UltraPure Water (1 x 1L) - MB-010-1000
MB-017	10X SDS-PAGE Running Gel Buffer (0.25 M Tris HCl, 1.92 M Glycine, 1.0% SDS pH 8.3) - MB-017
MB-018	2X SDS-PAGE Sample Buffer without DTT or b-MeOH (125 mM Tris HCl, 20% Glycerol, 4% SDS, 0.1% bromphenol blue, pH 6.8) - MB-018
MB-022-1000	1X SDS-PAGE Destain Solution (Ready-to Use) - MB-022-1000

### Images

1	Opal Prestained Protein Standard 10-245kDa shows these typical migration patterns when loaded at 5 µL per well under various gel conditions.
---	--



## Disclaimer

This product is for research use only and is not intended for therapeutic or diagnostic applications. Please contact a technical service representative for more information. All products of animal origin manufactured by Rockland Immunochemicals are derived from starting materials of North American origin. Collection was performed in United States Department of Agriculture (USDA) inspected facilities and all materials have been inspected and certified to be free of disease and suitable for exportation. All properties listed are typical characteristics and are not specifications. All suggestions and data are offered in good faith but without guarantee as conditions and methods of use of our products are beyond our control. All claims must be made within 30 days following the date of delivery. The prospective user must determine the suitability of our materials before adopting them on a commercial scale. Suggested uses of our products are not recommendations to use our products in violation of any patent or as a license under any patent of Rockland Immunochemicals, Inc. If you require a commercial license to use this material and do not have one, then return this material, unopened to: Rockland Inc., P.O. BOX 5199, Limerick, Pennsylvania, USA.