

Diamond Ready-to-Use DNA Ladder 250-25Kbp - MB-207-0500

Code: MB-207-0500

Size: 500 µL

Product Description: Diamond Ready-to-Use DNA Ladder 250-25Kbp - MB-207-0500

Concentration: 100 µg/mL

PhysicalState: Liquid (in 1x Loading Buffer)

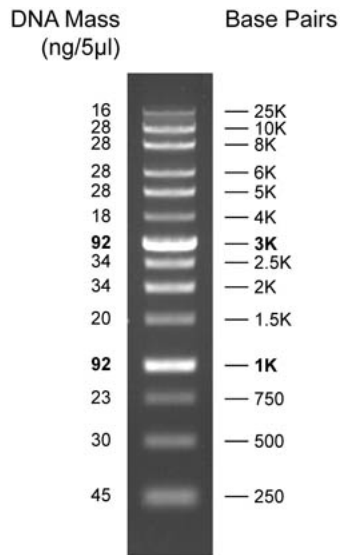
Label	Unconjugated
Buffer	See application note.
Storage Condition	Store vial at 2°-8° C. Can be stored at room temperature for up to six (6) months or at -20° C for up to two (2) years.
Synonyms	DNA ladder, DNA marker, DNA standard, Molecular weight marker, DNA molecular weight ladder, Ready-to-use DNA ladder, DNA agarose ladder
Application Note	Diamond Ready-to-Use DNA Ladder 250-25kbp has a suggested load volume is 5 µL/well.
Background	Diamond Ready-to-Use DNA Ladder 250-25kbp is a unique combination of a number of proprietary plasmids digested with appropriate restriction enzymes and PCR products to yield 14 fragments, suitable for use as molecular weight standards for agarose gel electrophoresis. The DNA includes fragments ranging from 250-25K base pairs. The 1K and 3K bands have increased intensity to serve as reference points. The approximate mass of DNA in each band is provided (0.52 g a load) for approximating the mass of DNA in comparably intense samples of similar size.
Purity And Specificity	Diamond Ready-to-Use DNA Ladder 250-25kbp is comprised of PCR products and double-stranded DNA that were digested with appropriate restriction enzymes, are phenol extracted, and equilibrated to 10 mM Tris-HCl (pH 8.0) and 10mM EDTA.
Assay Dilutions	User Optimized
Other Assays	User Optimized
Expiration	Expiration date is one (1) year from date of opening.

Related Products

MB-010-1000	Molecular Biology Grade UltraPure Water (1 x 1L) - MB-010-1000
MB-020	50X Tris-Acetate-EDTA (TAE) (2.0 M Tris-Acetate 0.05 M EDTA pH 8.3) - MB-020
MB-101-0100	Deoxyribonuclease I (Bovine Pancreas) RNAse and Protease Free Molecular Biology Grade - MB-101-0100
MB-102-0100	DNA (Calf Thymus) - MB-102-0100

Images

1	Diamond Ready-to-Use DNA Ladder 250-25kbp shows this typical migration pattern when loaded at 5 µL per well on a 0.7% TAE agarose gel.
---	--



0.7 % TAE agarose gel

Disclaimer

This product is for research use only and is not intended for therapeutic or diagnostic applications. Please contact a technical service representative for more information. All products of animal origin manufactured by Rockland Immunochemicals are derived from starting materials of North American origin. Collection was performed in United States Department of Agriculture (USDA) inspected facilities and all materials have been inspected and certified to be free of disease and suitable for exportation. All properties listed are typical characteristics and are not specifications. All suggestions and data are offered in good faith but without guarantee as conditions and methods of use of our products are beyond our control. All claims must be made within 30 days following the date of delivery. The prospective user must determine the suitability of our materials before adopting them on a commercial scale. Suggested uses of our products are not recommendations to use our products in violation of any patent or as a license under any patent of Rockland Immunochemicals, Inc. If you require a commercial license to use this material and do not have one, then return this material, unopened to: Rockland Inc., P.O. BOX 5199, Limerick, Pennsylvania, USA.