



LKT Laboratories, Inc.

## Vitamin D2

Phone: 888-558-5227

651-644-8424

Fax: 888-558-7329

Email: [getinfo@lktlabs.com](mailto:getinfo@lktlabs.com)

Web: [lktlabs.com](http://lktlabs.com)

### Product Information

**Product ID** V3476

**CAS No.** 50-14-6

**Chemical Name** (3 $\beta$ ,5 $\alpha$ ,7 $\beta$ ,22 $\beta$ )-9,10-Secoergosta-5,7-10(19),22-tetra- en-3-ol

**Synonym** Calciferol, Ergocalciferol, Viosterol, Condol, Deltalin, Diactol, Ergorone, Infron, Mulsiferol, Ostelin, Radsterin

**Formula** C<sub>28</sub>H<sub>44</sub>O

**Formula Wt.** 396.65

**Melting Point** 115-118 °C

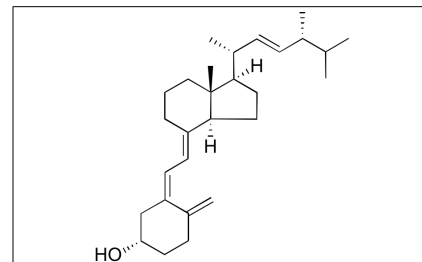
**Purity** ≥91%

**Solubility** Soluble in organic solvents.  
Insoluble in water.

**Store Temp** -20 °C

**Ship Temp** Ambient

**Description** Calciferol is a Vitamin D prodrug found in fungi and alfalfa; it is commercially used as a vitamin D supplement for bone strength but also exhibits antioxidative and anticancer chemotherapeutic activities. In leukemia cells, calciferol induces apoptosis, decreases the mitochondrial membrane potential, and increases release of cytochrome C, cleavage of PARP, and activation of caspases. In animal models of breast cancer, calciferol decreases tumor growth.



**Bulk quantities available upon request**

Product ID	Size
V3476	1 g
V3476	5 g

**References** Bikle DD. Vitamin D metabolism, mechanism of action, and clinical applications. *Chem Biol.* 2014 Mar 20;21(3):319-29. PMID: 24529992.

Chen WJ, Huang YT, Wu ML, et al. Induction of apoptosis by vitamin D2, ergocalciferol, via reactive oxygen species generation, glutathione depletion, and caspase activation in human leukemia Cells. *J Agric Food Chem.* 2008 May 14;56(9):2996-3005. PMID: 18386902.

Zinser GM, Tribble E, Valrance M, et al. 1,24(S)-dihydroxyvitamin D2, an endogenous vitamin D2 metabolite, inhibits growth of breast cancer cells and tumors. *Anticancer Res.* 2005 Jan-Feb;25(1A):235-41. PMID: 15816543.

**Caution:** This product is intended for laboratory and research use only. It is not for human or drug use.