



LKT Laboratories, Inc.

S-Sulforaphene

Phone: 888-558-5227
651-644-8424
Fax: 888-558-7329
Email: getinfo@lctlabs.com
Web: lctlabs.com

Product Information

Product ID S8049

CAS No. 592-95-0

Chemical Name (-)-4-Isothiocyanato-4R-(methylsulfinyl)-1-butene

Synonym Raphanin, Sativin

Formula $C_6H_9NOS_2$

Formula Wt. 175.27

Melting Point

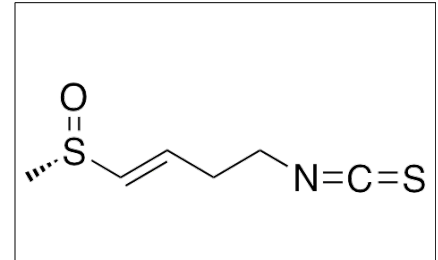
Purity $\geq 98\%$

Solubility Soluble in water, methanol,
DMSO, or chloroform.

Store Temp $-20^{\circ}C$

Ship Temp Ambient

Description S-Sulforaphene is an isothiocyanate found in plants in the *Brassicaceae* family, such as radishes. This compound exhibits herbicidal and anticancer activities. S-Sulforaphene inhibits proliferation of colon adenocarcinoma cells and suppresses growth of velvetleaf seedlings. Like other isothiocyanates, S-sulforaphene may also exhibit chemopreventive benefit and induce phase II enzymes.



Bulk quantities available upon request

Product ID	Size
S8049	10 mg
S8049	25 mg
S8049	50 mg

References Kim KH, Moon E, Kim SY, et al. 4-Methylthio-butanyl derivatives from the seeds of *Raphanus sativus* and their biological evaluation on anti-inflammatory and antitumor activities. *J Ethnopharmacol.* 2014;151(1):503-8. PMID: 24231071.

Beevi SS, Mangamoori LN, Subathra M, et al. Hexane extract of *Raphanus sativus* L. roots inhibits cell proliferation and induces apoptosis in human cancer cells by modulating genes related to apoptotic pathway. *Plant Foods Hum Nutr.* 2010 Sep;65(3):200-9. PMID: 20652750.

Brinker AM, Spencer GF. Herbicidal activity of sulforaphene from stock (*Matthiola incana*). *J Chem Ecol.* 1993 Oct;19(10):2279-84. PMID: 24248575.

Caution: This product is intended for laboratory and research use only. It is not for human or drug use.