



LKT Laboratories, Inc.

SR144528

Phone: 888-558-5227  
651-644-8424  
Fax: 888-558-7329  
Email: [getinfo@lktlabs.com](mailto:getinfo@lktlabs.com)  
Web: [lktlabs.com](http://lktlabs.com)

## Product Information

**Product ID** S680000

**CAS No.** 192703-06-3

**Chemical Name** 5-(4-chloro-3-methylphenyl)-1-[(4-methylphenyl)methyl]-N-[(1R,3S,4S)-2,2,4-trimethyl-3-bicyclo[2.2.1]heptanyl]pyrazole-3-carboxamide

**Synonym**

**Formula** C<sub>29</sub>H<sub>34</sub>ClN<sub>3</sub>O

**Formula Wt.** 476.06

**Melting Point**

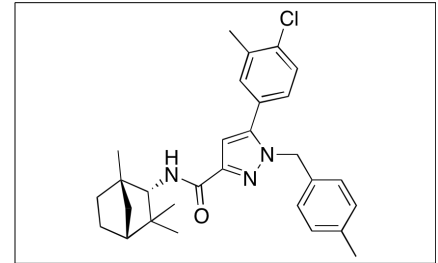
**Purity** ≥98%

**Solubility** Soluble in ethanol (~20 mg/ml), DMSO (~20 mg/ml), DMF (~20 mg/ml), and 1:1 ethanol: PBS (pH 7.2) (~0.5 mg/ml).

**Store Temp** -20°C

**Ship Temp** Ambient

**Description** SR144528 is a selective CB2 antagonist. It is used to study the role of cannabinoid receptor 2 in immunology, neuroscience and cancer. Recent research shows SR144528 to reduce immunoglobulin human SKW 6.4 cells.



**Bulk quantities available upon request**

Product ID	Size
S680000	1 mg
S680000	5 mg
S680000	25 mg

**References** Feng R, Milcarek CA, Xie XQ. Antagonism of cannabinoid receptor 2 pathway suppresses IL-6-induced immunoglobulin IgM secretion. *BMC Pharmacol Toxicol.* 2014 Jun 9;15:30. PMID: 24913620.

Krylatov AV, Maslov LN, Lasukova OV and Pertwee RG. Cannabinoid receptor antagonists SR141716 and SR144528 exhibit properties of partial agonists in experiments on isolated perfused rat heart. *Bull Exp Biol Med.* 2005 May;139(5):558-61. PMID: 16224548.

**Caution:** This product is intended for laboratory and research use only. It is not for human or drug use.