



Product Information

Product ID S1971

CAS No. 79559-97-0

Chemical Name (1S-cis)-4-(3,4-dichlorophenyl)-1,2,3,4-tetrahydro-N-methyl-1-naphthalenamine hydrochloride

Synonym Lustral, Zoloft

Formula C₁₇H₁₇Cl₂N • HCl

Formula Wt. 342.70

Melting Point 243-245 °C

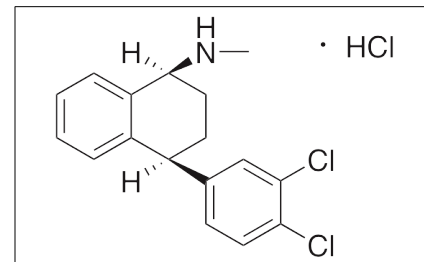
Purity ≥98%

Solubility Slightly soluble in water and isopropyl alcohol. Sparingly soluble in ethanol.

Store Temp Ambient

Ship Temp Ambient

Description Sertraline exhibits antidepressant and anxiolytic activities; it is a typical selective serotonin reuptake inhibitor (SSRI). Sertraline primarily inhibits the 5-HT transporter (SERT), but also inhibits the dopamine transporter (DAT), α1-adrenergic receptors, and potentially σ1 receptors. Additionally, sertraline inhibits osteoclast formation and resorption and induces apoptosis in both osteoclasts and osteoblasts. This compound also acts as a functional inhibitor of acid sphingomyelinase (FIASMA).



Bulk quantities available upon request

Product ID	Size
S1971	500 mg
S1971	1 g
S1971	5 g

References Guaiana G, Gupta S, Chiodo D, et al. Agomelatine versus other antidepressive agents for major depression. *Cochrane Database Syst Rev.* 2013 Dec 17;12:CD008851. PMID: 24343836.

Zhu H, Bogdanov MB, Boyle SH, et al. Pharmacometabolomics of response to sertraline and to placebo in major depressive disorder - possible role for methoxyindole pathway. *PLoS One.* 2013 Jul 17;8(7):e68283. PMID: 23874572.

Hodge JM, Wang Y, Berk M, et al. Selective serotonin reuptake inhibitors inhibit human osteoclast and osteoblast formation and function. *Biol Psychiatry.* 2013 Jul 1;74(1):32-9. PMID: 23260229.

Meyer JH, Wilson AA, Segrati S, et al. Serotonin transporter occupancy of five selective serotonin reuptake inhibitors at different doses: an [11C]DASB positron emission tomography study. *Am J Psychiatry.* 2004 May;161(5):826-35. PMID: 15121647.

Caution: This product is intended for laboratory and research use only. It is not for human or drug use.