



LKT Laboratories, Inc.

Repaglinide

Phone: 888-558-5227
651-644-8424
Fax: 888-558-7329
Email: getinfo@lktlabs.com
Web: lktlabs.com

Product Information

Product ID R1860

CAS No. 135062-02-1

Chemical Name 2-ethoxy-4-[2-[[[(1S)-3-methyl-1-(2-piperidin-1-ylphenyl)butyl]amino]-2-oxoethyl]benzoic acid

Synonym

Formula C₂₇H₃₆N₂O₄

Formula Wt. 452.59

Melting Point 130-131 °C

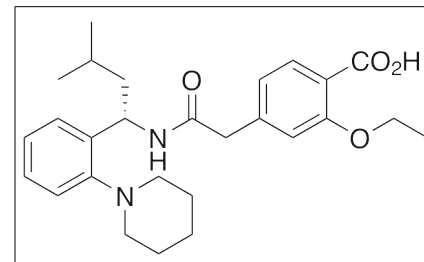
Purity ≥98%

Solubility

Store Temp Ambient

Ship Temp Ambient

Description Repaglinide is a derivative of meglitinide that non-selectively binds the sulfonylurea subunit of ATP-sensitive K⁺ channels, inducing channel closure. Repaglinide is a fast acting anti-diabetic compound that increases insulin release.



Bulk quantities available upon request

Product ID **Size**

R1860 100 mg

R1860 250 mg

R1860 1 g

References Zünkler BJ. Human ether-a-go-go-related (HERG) gene and ATP-sensitive potassium channels as targets for adverse drug effects. *Pharmacol Ther.* 2006 Oct;112(1):12-37. PMID: 16647758.

Proks P, Reimann F, Green N, et al. Sulfonylurea stimulation of insulin secretion. *Diabetes.* 2002 Dec;51 Suppl 3:S368-76. PMID: 12475777.

Hatorp V. Clinical pharmacokinetics and pharmacodynamics of repaglinide. *Clin Pharmacokinet.* 2002;41(7):471-83. PMID: 12083976.

Caution: This product is intended for laboratory and research use only. It is not for human or drug use.