



Product Information

Product ID R0105
CAS No. 117976-90-6
Chemical Name 2[[[4-(3-Methoxypropoxy)-3-methyl-2-pyridinyl]methyl]sulfinyl]-1H-benzimidazole

Synonym Pariprazole

Formula C₁₈H₂₀N₃O₃S Na

Formula Wt. 381.42

Melting Point 99-100°C

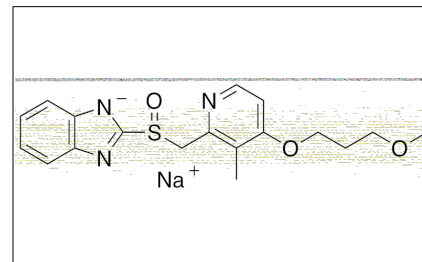
Purity ≥98%

Solubility Insoluble in water. Soluble in DMSO.

Store Temp -20°C

Ship Temp Ambient

Description Rabeprazole is a proton pump inhibitor (PPI) that exhibits antacid activity, as it is clinically used to treat gastric ulcers and gastroesophageal reflux disease (GERD). Rabeprazole binds cysteine residues on the H⁺/K⁺ ATPase, inhibiting gastric acid secretion. Additionally, rabeprazole displays some neuroprotective potential, as it inhibits human small C-terminal domain phosphatases (Scpc), modulating expression of neuronal genes and neuronal stem cell differentiation in vitro.



Bulk quantities available upon request

Product ID	Size
R0105	10 mg
R0105	25 mg
R0105	100 mg

References Ward RM, Kearns GL. Proton pump inhibitors in pediatrics : mechanism of action, pharmacokinetics, pharmacogenetics, and pharmacodynamics. *Paediatr Drugs*. 2013 Apr;15(2):119-31. PMID: 23512128.

Zhang M, Cho EJ, Burstein G, et al. Selective inactivation of a human neuronal silencing phosphatase by a small molecule inhibitor. *ACS Chem Biol*. 2011 May 20;6(5):511-9. PMID: 21348431.

Sanaka M, Anjiki H, Yamamoto T, et al. Rabeprazole delays gastric emptying of a nutrient liquid. *J Gastroenterol Hepatol*. 2007 Nov;22(11):1806-9. PMID: 17914954.

Caution: This product is intended for laboratory and research use only. It is not for human or drug use.