



LKT Laboratories, Inc.

## Phentolamine Methanesulfonate

Phone: 888-558-5227  
651-644-8424  
Fax: 888-558-7329  
Email: [getinfo@lktlabs.com](mailto:getinfo@lktlabs.com)  
Web: [lktlabs.com](http://lktlabs.com)

### Product Information

**Product ID** P2818

**CAS No.** 65-28-1

**Chemical Name** 3-[[[4,5-Dihydro-1H-imidazol-2-yl)methyl](4-methyl-phenyl)amino]phenol methanesulfonate

**Synonym** Phentolamine mesylate, Regitine, Rogitine

**Formula** C<sub>17</sub>H<sub>19</sub>N<sub>3</sub>O • CH<sub>3</sub>SO<sub>3</sub>H

**Formula Wt.** 377.46

**Melting Point** 177-181 °C

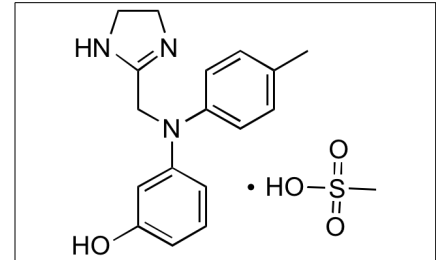
**Purity** ≥98%

**Solubility** Soluble in water, alcohol and chloroform.

**Store Temp** Ambient

**Ship Temp** Ambient

**Description** Phentolamine is a nonselective α-adrenergic receptor antagonist that exhibits vasodilatory and antihypertensive activities. Phentolamine is occasionally used to treat erectile dysfunction. In vivo, phentolamine inhibits fructose-induced increases in blood pressure and activates ATP-sensitive K<sup>+</sup> channels, altering Ca<sup>2+</sup> signaling.



**Bulk quantities available upon request**

Product ID	Size
P2818	50 mg
P2818	100 mg
P2818	500 mg

**References** Zhou K, Kumar U, Yuen VG, et al. The effects of phentolamine on fructose-fed rats. *Can J Physiol Pharmacol.* 2012 Aug;90(8):1075-85. PMID: 22783820.

Ahn SW, Kim SH, Kim JH, et al. Phentolamine inhibits the pacemaker activity of mouse interstitial cells of Cajal by activating ATP-sensitive K<sup>+</sup> channels. *Arch Pharm Res.* 2010 Mar;33(3):479-89. PMID: 20361315.

Dinsmore WW, Wyllie MG. Vasoactive intestinal polypeptide/phentolamine for intracavernosal injection in erectile dysfunction. *BJU Int.* 2008 Sep;102(8):933-7. PMID: 18485029.

**Caution:** This product is intended for laboratory and research use only. It is not for human or drug use.